

Workhouse, E3

This palatial two bedroom apartment, features separate wings and a grand octagon room featuring 10 original arched windows and over 10ft ceilings. This apartment is set within a palatial design grade II listed building with historic significance, within a heritage site which was originally built in 1848-49 as a former workhouse in east London. This truly historic landmark is set in a beautiful location and is a hidden gem in central east London, which was reopened to the public for the first time a few years ago as a community festival, showing films curated by Danny Boyle and a separate photographic exhibition of this historic site. Perfect for photographic shoots or filming.





Workhouse, E3

This palatial two bedroom apartment, features separate wings and a grand octagon roof, featuring 11 original arched windows and over 10ft ceilings. This apartment is set within a palatial design grade II listed building with historic significance, within a heritage site which was originally built in 1848-49 as a former workhouse in east London. This truly historic landmark is set in a beautiful location and is a hidden gem in central east London, which was reopened to the public for the first time a few years ago as a community festival, showing films curated by Danny Boyle and a separate photographic exhibition of this historic site. Perfect for photographic

CAROL HAYES
MANAGEMENT

020 7482 1555

www.carolhayesmanagement.co.uk



Workhouse, E3

This palatial two bedroom apartment, features separate wings and a grand octagon room, featuring 11 original arched windows and over 10ft ceilings. This apartment is set within a palatial design grade II listed building with historic significance, within a heritage site which was originally built in 1848-49 as a former workhouse in east London. This truly historic landmark is set in a beautiful location and is a hidden gem in central east London, which was reopened to the public for the first time a few years ago as a community festival, showing films curated by Danny Boyle and a separate photographic exhibition of this historic site. Perfect for photographic

CAROLHAYES
MANAGEMENT

020 7482 1555

www.carolhayesmanagement.co.uk



Workhouse, E3

This palatial two bedroom apartment, features separate wings and a grand octagon roof, featuring 11 original arched windows and over 10ft ceilings. This apartment is set within a palatial design grade II listed building with historic significance, within a heritage site which was originally built in 1848-49 as a former workhouse in east London. This truly historic landmark is set in a beautiful location and is a hidden gem in central east London, which was reopened to the public for the first time a few years ago as a community festival, showing films curated by Danny Boyle and a separate photographic exhibition of this historic site. Perfect for photographic

CAROL HAYES
MANAGEMENT

020 7482 1555

www.carolhayesmanagement.co.uk



Workhouse, E3

This palatial two bedroom apartment, features separate wings and a grand octagon roof, featuring 11 original arched windows and over 10ft ceilings. This apartment is set within a palatial design grade II listed building with historic significance, within a heritage site which was originally built in 1848-49 as a former workhouse in east London. This truly historic landmark is set in a beautiful location and is a hidden gem in central east London, which was reopened to the public for the first time a few years ago as a community festival, showing films curated by Danny Boyle and a separate photographic exhibition of this historic site. Perfect for photographic

CAROL HAYES
MANAGEMENT

020 7482 1555

www.carolhayesmanagement.co.uk



Workhouse, E3

This palatial two bedroom apartment, features separate wings and a grand octagon roof, featuring 11 original arched windows and over 10ft ceilings. This apartment is set within a palatial design grade II listed building with historic significance, within a heritage site which was originally built in 1848-49 as a former workhouse in east London. This truly historic landmark is set in a beautiful location and is a hidden gem in central east London, which was reopened to the public for the first time a few years ago as a community festival, showing films curated by Danny Boyle and a separate photographic exhibition of this historic site. Perfect for photographic

CAROL HAYES
MANAGEMENT

020 7482 1555

www.carolhayesmanagement.co.uk



Workhouse, E3

This palatial two bedroom apartment, features separate wings and a grand octagon room, featuring 11 original arched windows and over 10ft ceilings. This apartment is set within a palatial design grade II listed building with historic significance, within a heritage site which was originally built in 1848-49 as a former workhouse in east London. This truly historic landmark is set in a beautiful location and is a hidden gem in central east London, which was reopened to the public for the first time a few years ago as a community festival, showing films curated by Danny Boyle and a separate photographic exhibition of this historic site. Perfect for photographic

CAROL HAYES
MANAGEMENT

020 7482 1555

www.carolhayesmanagement.co.uk



Workhouse, E3

This palatial two bedroom apartment, features separate wings and a grand octagon roof, featuring 11 original arched windows and over 10ft ceilings. This apartment is set within a palatial design grade II listed building with historic significance, within a heritage site which was originally built in 1848-49 as a former workhouse in east London. This truly historic landmark is set in a beautiful location and is a hidden gem in central east London, which was reopened to the public for the first time a few years ago as a community festival, showing films curated by Danny Boyle and a separate photographic exhibition of this historic site. Perfect for photographic

CAROL HAYES
MANAGEMENT

020 7482 1555

www.carolhayesmanagement.co.uk



Workhouse, E3

This palatial two bedroom apartment, features separate wings and a grand octagon roof, featuring 11 original arched windows and over 10ft ceilings. This apartment is set within a palatial design grade II listed building with historic significance, within a heritage site which was originally built in 1848-49 as a former workhouse in east London. This truly historic landmark is set in a beautiful location and is a hidden gem in central east London, which was reopened to the public for the first time a few years ago as a community festival, showing films curated by Danny Boyle and a separate photographic exhibition of this historic site. Perfect for photographic

**CAROLHAYES
MANAGEMENT**

020 7482 1555

www.carolhayesmanagement.co.uk



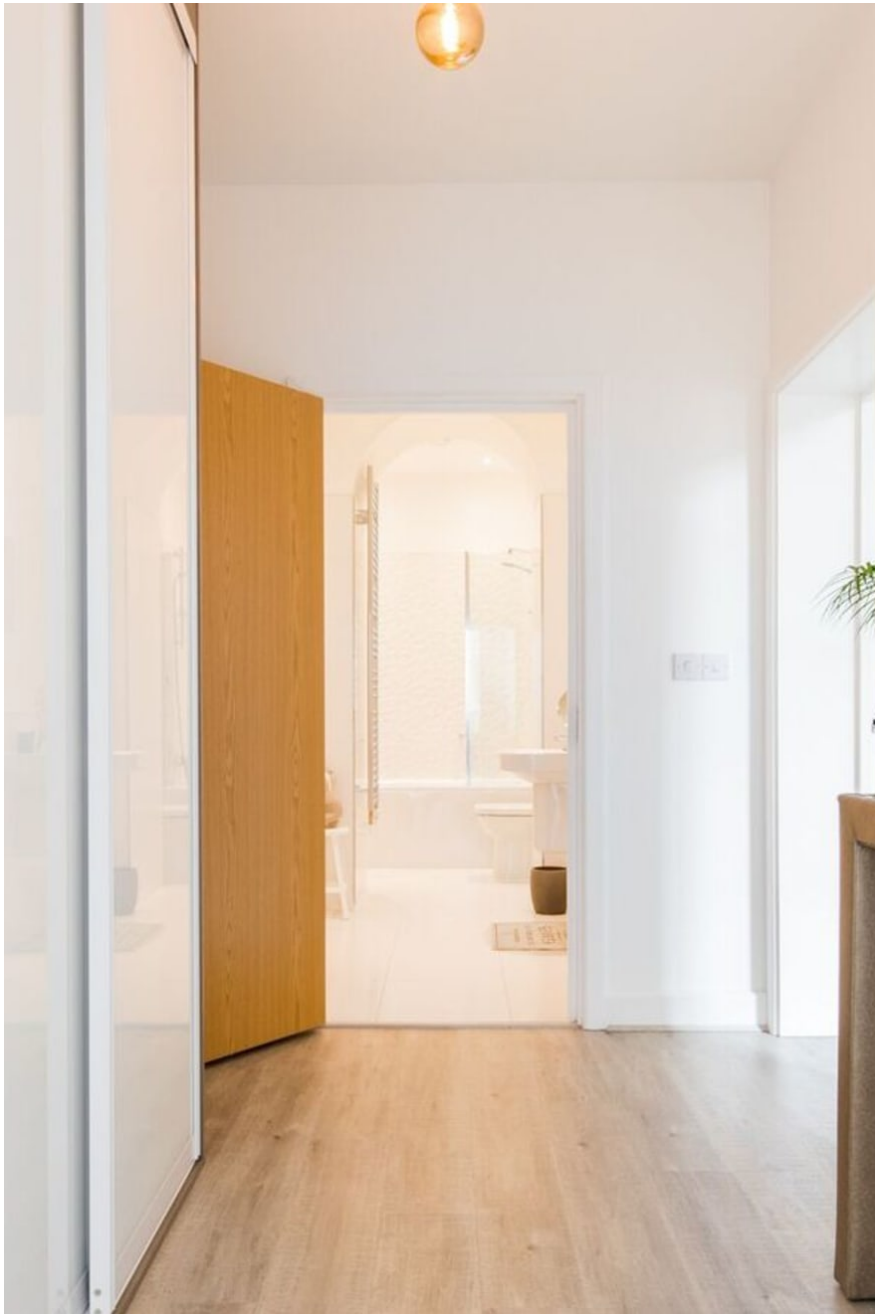
Workhouse, E3

This palatial two bedroom apartment, features separate wings and a grand octagon room, featuring 11 original arched windows and over 10ft ceilings. This apartment is set within a palatial design grade II listed building with historic significance, within a heritage site which was originally built in 1848-49 as a former workhouse in east London. This truly historic landmark is set in a beautiful location and is a hidden gem in central east London, which was reopened to the public for the first time a few years ago as a community festival, showing films curated by Danny Boyle and a separate photographic exhibition of this historic site. Perfect for photographic

CAROL HAYES
MANAGEMENT

020 7482 1555

www.carolhayesmanagement.co.uk



Workhouse, E3

This palatial two bedroom apartment, features separate wings and a grand octagon roof, featuring 11 original arched windows and over 10ft ceilings. This apartment is set within a palatial design grade II listed building with historic significance, within a heritage site which was originally built in 1848-49 as a former workhouse in east London. This truly historic landmark is set in a beautiful location and is a hidden gem in central east London, which was reopened to the public for the first time a few years ago as a community festival, showing films curated by Danny Boyle and a separate photographic exhibition of this historic site. Perfect for photographic

CAROL HAYES
MANAGEMENT

020 7482 1555

www.carolhayesmanagement.co.uk



Workhouse, E3

This palatial two bedroom apartment, features separate wings and a grand octagon room, featuring 11 original arched windows and over 10ft ceilings. This apartment is set within a palatial design grade II listed building with historic significance, within a heritage site which was originally built in 1848-49 as a former workhouse in east London. This truly historic landmark is set in a beautiful location and is a hidden gem in central east London, which was reopened to the public for the first time a few years ago as a community festival, showing films curated by Danny Boyle and a separate photographic exhibition of this historic site. Perfect for photographic

CAROL HAYES
MANAGEMENT

020 7482 1555

www.carolhayesmanagement.co.uk



Workhouse, E3

This palatial two bedroom apartment, features separate wings and a grand octagon roof, featuring 11 original arched windows and over 10ft ceilings. This apartment is set within a palatial design grade II listed building with historic significance, within a heritage site which was originally built in 1848-49 as a former workhouse in east London. This truly historic landmark is set in a beautiful location and is a hidden gem in central east London, which was reopened to the public for the first time a few years ago as a community festival, showing films curated by Danny Boyle and a separate photographic exhibition of this historic site. Perfect for photographic

CAROL HAYES
MANAGEMENT

020 7482 1555

www.carolhayesmanagement.co.uk



Workhouse, E3

This palatial two bedroom apartment, features separate wings and a grand octagon room, featuring 11 original arched windows and over 10ft ceilings. This apartment is set within a palatial design grade II listed building with historic significance, within a heritage site which was originally built in 1848-49 as a former workhouse in east London. This truly historic landmark is set in a beautiful location and is a hidden gem in central east London, which was reopened to the public for the first time a few years ago as a community festival, showing films curated by Danny Boyle and a separate photographic exhibition of this historic site. Perfect for photographic

CAROL HAYES
MANAGEMENT

020 7482 1555

www.carolhayesmanagement.co.uk



Workhouse, E3

This palatial two bedroom apartment, features separate wings and a grand octagon room, featuring 11 original arched windows and over 10ft ceilings. This apartment is set within a palatial design grade II listed building with historic significance, within a heritage site which was originally built in 1848-49 as a former workhouse in east London. This truly historic landmark is set in a beautiful location and is a hidden gem in central east London, which was reopened to the public for the first time a few years ago as a community festival, showing films curated by Danny Boyle and a separate photographic exhibition of this historic site. Perfect for photographic

CAROL HAYES
MANAGEMENT

020 7482 1555

www.carolhayesmanagement.co.uk



Workhouse, E3

This palatial two bedroom apartment, features separate wings and a grand octagon room, featuring 11 original arched windows and over 10ft ceilings. This apartment is set within a palatial design grade II listed building with historic significance, within a heritage site which was originally built in 1848-49 as a former workhouse in east London. This truly historic landmark is set in a beautiful location and is a hidden gem in central east London, which was reopened to the public for the first time a few years ago as a community festival, showing films curated by Danny Boyle and a separate photographic exhibition of this historic site. Perfect for photographic

CAROL HAYES
MANAGEMENT

020 7482 1555

www.carolhayesmanagement.co.uk



Workhouse, E3

This palatial two bedroom apartment, features separate wings and a grand octagon room, featuring 17 original arched windows and over 10ft ceilings. This apartment is set within a palatial design grade II listed building with historic significance, within a heritage site which was originally built in 1848-49 as a former workhouse in east London. This truly historic landmark is set in a beautiful location and is a hidden gem in central east London, which was reopened to the public for the first time a few years ago as a community festival, showing films curated by Danny Boyle and a separate photographic exhibition of this historic site. Perfect for photographic

CAROL HAYES
MANAGEMENT

020 7482 1555

www.carolhayesmanagement.co.uk



Workhouse, E3

This palatial two bedroom apartment, features separate wings and a grand octagon room featuring 11 original arched windows and over 10ft ceilings. This apartment is set within a palatial design grade II listed building with historic significance, within a heritage site which was originally built in 1848-49 as a former workhouse in east London. This truly historic landmark is set in a beautiful location and is a hidden gem in central east London, which was reopened to the public for the first time a few years ago as a community festival, showing films curated by Danny Boyle and a separate photographic exhibition of this historic site. Perfect for photographic

CAROLHAYES
MANAGEMENT

020 7482 1555

www.carolhayesmanagement.co.uk



Workhouse, E3

This palatial two bedroom apartment, features separate wings and a grand octagon roof, featuring 11 original arched windows and over 10ft ceilings. This apartment is set within a palatial design grade II listed building with historic significance, within a heritage site which was originally built in 1848-49 as a former workhouse in east London. This truly historic landmark is set in a beautiful location and is a hidden gem in central east London, which was reopened to the public for the first time a few years ago as a community festival, showing films curated by Danny Boyle and a separate photographic exhibition of this historic site. Perfect for photographic

CAROL HAYES
MANAGEMENT

020 7482 1555

www.carolhayesmanagement.co.uk



Workhouse, E3

This palatial two bedroom apartment, features separate wings and a grand octagon roof, featuring 11 original arched windows and over 10ft ceilings. This apartment is set within a palatial design grade II listed building with historic significance, within a heritage site which was originally built in 1848-49 as a former workhouse in east London. This truly historic landmark is set in a beautiful location and is a hidden gem in central east London, which was reopened to the public for the first time a few years ago as a community festival, showing films curated by Danny Boyle and a separate photographic exhibition of this historic site. Perfect for photographic

CAROL HAYES
MANAGEMENT

020 7482 1555

www.carolhayesmanagement.co.uk



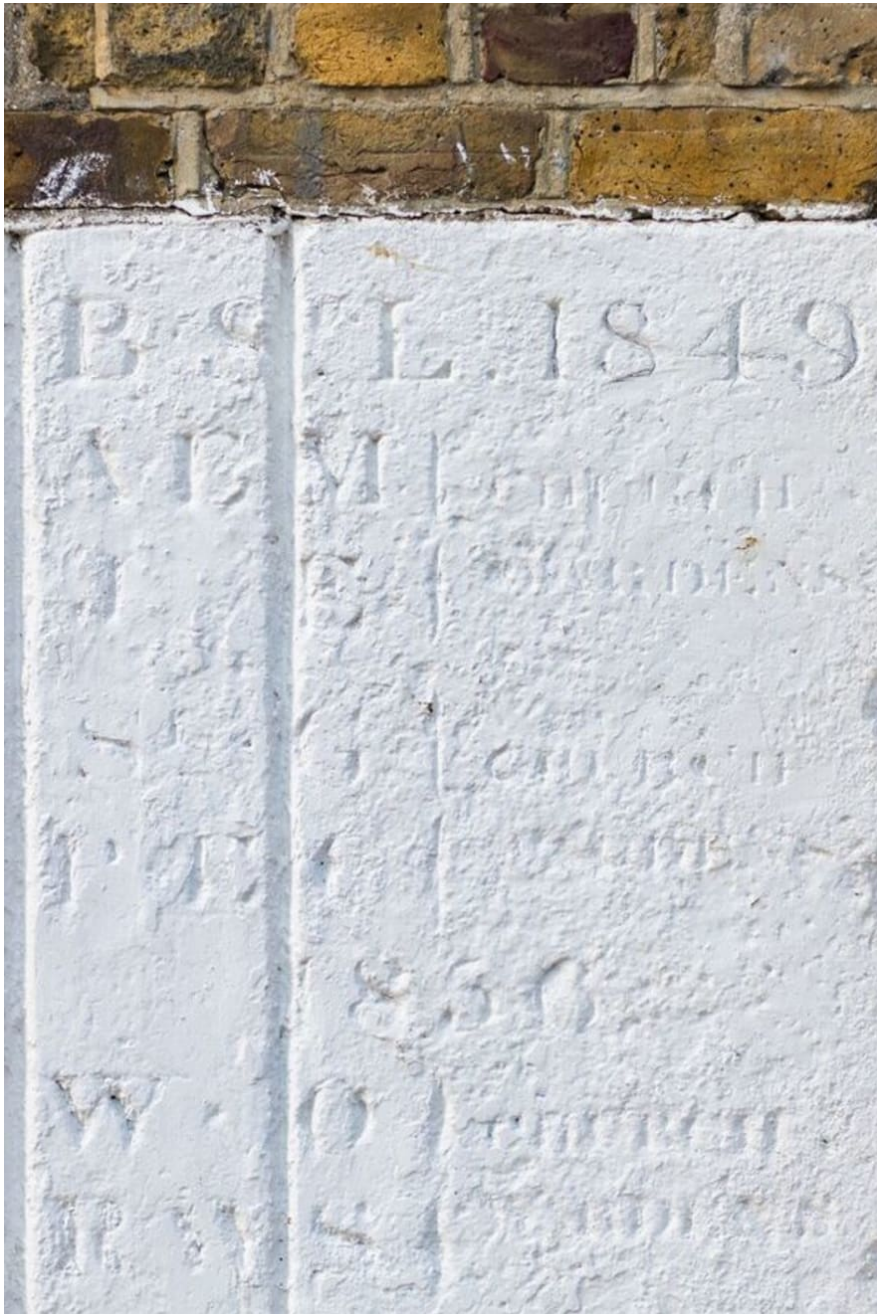
Workhouse, E3

This palatial two bedroom apartment, features separate wings and a grand octagon room, featuring 11 original arched windows and over 10ft ceilings. This apartment is set within a palatial design grade II listed building with historic significance, within a heritage site which was originally built in 1848-49 as a former workhouse in east London. This truly historic landmark is set in a beautiful location and is a hidden gem in central east London, which was reopened to the public for the first time a few years ago as a community festival, showing films curated by Danny Boyle and a separate photographic exhibition of this historic site. Perfect for photographic

CAROLHAYES
MANAGEMENT

020 7482 1555

www.carolhayesmanagement.co.uk



Workhouse, E3

This palatial two bedroom apartment, features separate wings and a grand octagon room, featuring 11 original arched windows and over 10ft ceilings. This apartment is set within a palatial design grade II listed building with historic significance, within a heritage site which was originally built in 1848-49 as a former workhouse in east London. This truly historic landmark is set in a beautiful location and is a hidden gem in central east London, which was reopened to the public for the first time a few years ago as a community festival, showing films curated by Danny Boyle and a separate photographic exhibition of this historic site. Perfect for photographic

CAROL HAYES
MANAGEMENT

020 7482 1555

www.carolhayesmanagement.co.uk