

The Salt House- Chichester

The Salt House is a bright beachside home, enclosed upon ½ acre of lush paddock fields. This modern detached house is located five minutes from West Wittering Beach and features a Swimming Pool with a decking patio, wood-fired hot tub, outdoor dining area, large open plan kitchen with an island cooker. Large bedrooms, walk in showers and outdoor dining. Emulating the beachy vibe of coastal living, the concept behind the design of this comfortable and calming home features pared-back simplicity, calming neutral and cool textures and colours, reflecting its outdoor surroundings. The property also boasts parking with easy access for both large and smaller shoots.





The Salt House- Chichester

The Salt House is a bright beachside home, enclosed upon ½ acre of lush paddock fields. This modern detached house is located five minutes from West Wittering Beach and features a Swimming Pool with a decking patio, wood-fired hot tub, outdoor dining area, large open plan kitchen with an island cooker. Large bedrooms, walk in showers and outdoor dining. Emulating the beachy vibe of coastal living, the concept behind the design of this comfortable and calming home features pared-back simplicity, calming neutral and cool textures and colours, reflecting its outdoor surroundings. The property also boasts parking with easy access for both large

CAROLHAYES
MANAGEMENT

020 7482 1555

www.carolhayesmanagement.co.uk



The Salt House- Chichester

The Salt House is a bright beachside home, enclosed upon ½ acre of lush paddock fields. This modern detached house is located five minutes from West Wittering Beach and features a Swimming Pool with a decking patio, wood-fired hot tub, outdoor dining area, large open plan kitchen with an island cooker. Large bedrooms, walk in showers and outdoor dining. Emulating the beachy vibe of coastal living, the concept behind the design of this comfortable and calming home features pared-back simplicity, calming neutral and cool textures and colours, reflecting its outdoor surroundings. The property also boasts parking with easy access for both large

CAROL HAYES
MANAGEMENT

020 7482 1555

www.carolhayesmanagement.co.uk



The Salt House- Chichester

The Salt House is a bright beachside home, enclosed upon ½ acre of lush paddock fields. This modern detached house is located five minutes from West Wittering Beach and features a Swimming Pool with a decking patio, wood-fired hot tub, outdoor dining area, large open plan kitchen with an island cooker. Large bedrooms, walk in showers and outdoor dining. Emulating the beachy vibe of coastal living, the concept behind the design of this comfortable and calming home features pared-back simplicity, calming neutral and cool textures and colours, reflecting its outdoor surroundings. The property also boasts parking with easy access for both large

CAROLHAYES
MANAGEMENT

020 7482 1555

www.carolhayesmanagement.co.uk



The Salt House- Chichester

The Salt House is a bright beachside home, enclosed upon ½ acre of lush paddock fields. This modern detached house is located five minutes from West Wittering Beach and features a Swimming Pool with a decking patio, wood-fired hot tub, outdoor dining area, large open plan kitchen with an island cooker. Large bedrooms, walk in showers and outdoor dining. Emulating the beachy vibe of coastal living, the concept behind the design of this comfortable and calming home features pared-back simplicity, calming neutral and cool textures and colours, reflecting its outdoor surroundings. The property also boasts parking with easy access for both large

CAROLHAYES
MANAGEMENT

020 7482 1555

www.carolhayesmanagement.co.uk



The Salt House- Chichester

The Salt House is a bright beachside home, enclosed upon ½ acre of lush paddock fields. This modern detached house is located five minutes from West Wittering Beach and features a Swimming Pool with a decking patio, wood-fired hot tub, outdoor dining area, large open plan kitchen with an island cooker. Large bedrooms, walk in showers and outdoor dining. Emulating the beachy vibe of coastal living, the concept behind the design of this comfortable and calming home features pared-back simplicity, calming neutral and cool textures and colours, reflecting its outdoor surroundings. The property also boasts parking with easy access for both large

CAROLHAYES
MANAGEMENT

020 7482 1555

www.carolhayesmanagement.co.uk



The Salt House- Chichester

The Salt House is a bright beachside home, enclosed upon ½ acre of lush paddock fields. This modern detached house is located five minutes from West Wittering Beach and features a Swimming Pool with a decking patio, wood-fired hot tub, outdoor dining area, large open plan kitchen with an island cooker. Large bedrooms, walk in showers and outdoor dining. Emulating the beachy vibe of coastal living, the concept behind the design of this comfortable and calming home features pared-back simplicity, calming neutral and cool textures and colours, reflecting its outdoor surroundings. The property also boasts parking with easy access for both large

CAROLHAYES
MANAGEMENT

020 7482 1555

www.carolhayesmanagement.co.uk



The Salt House- Chichester

The Salt House is a bright beachside home, enclosed upon ½ acre of lush paddock fields. This modern detached house is located five minutes from West Wittering Beach and features a Swimming Pool with a decking patio, wood-fired hot tub, outdoor dining area, large open plan kitchen with an island cooker. Large bedrooms, walk in showers and outdoor dining. Emulating the beachy vibe of coastal living, the concept behind the design of this comfortable and calming home features pared-back simplicity, calming neutral and cool textures and colours, reflecting its outdoor surroundings. The property also boasts parking with easy access for both large

**CAROLHAYES
MANAGEMENT**

020 7482 1555

www.carolhayesmanagement.co.uk



The Salt House- Chichester

The Salt House is a bright beachside home, enclosed upon ½ acre of lush paddock fields. This modern detached house is located five minutes from West Wittering Beach and features a Swimming Pool with a decking patio, wood-fired hot tub, outdoor dining area, large open plan kitchen with an island cooker. Large bedrooms, walk in showers and outdoor dining. Emulating the beachy vibe of coastal living, the concept behind the design of this comfortable and calming home features pared-back simplicity, calming neutral and cool textures and colours, reflecting its outdoor surroundings. The property also boasts parking with easy access for both large

CAROLHAYES
MANAGEMENT

020 7482 1555

www.carolhayesmanagement.co.uk



The Salt House- Chichester

The Salt House is a bright beachside home, enclosed upon ½ acre of lush paddock fields. This modern detached house is located five minutes from West Wittering Beach and features a Swimming Pool with a decking patio, wood-fired hot tub, outdoor dining area, large open plan kitchen with an island cooker. Large bedrooms, walk in showers and outdoor dining. Emulating the beachy vibe of coastal living, the concept behind the design of this comfortable and calming home features pared-back simplicity, calming neutral and cool textures and colours, reflecting its outdoor surroundings. The property also boasts parking with easy access for both large

CAROLHAYES
MANAGEMENT

020 7482 1555

www.carolhayesmanagement.co.uk



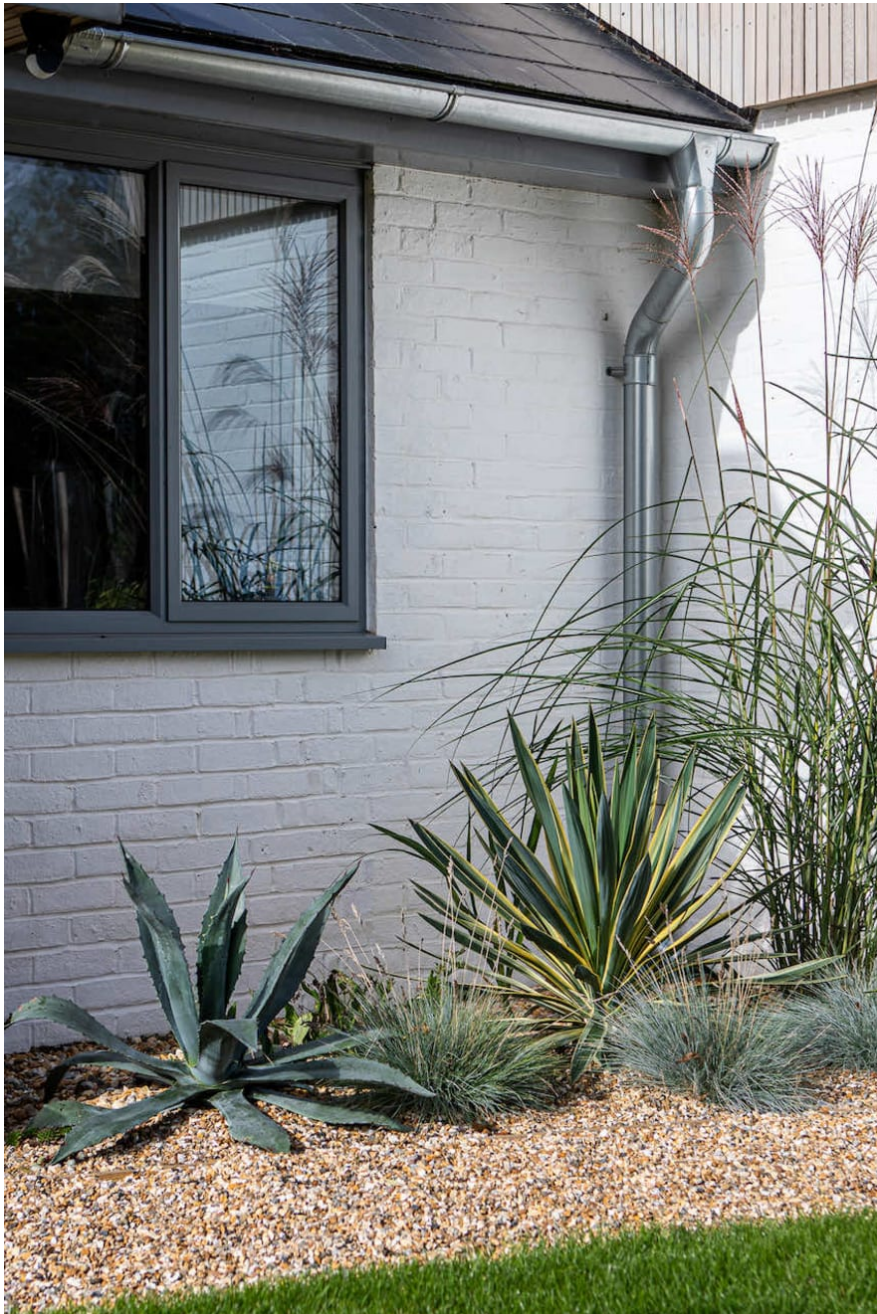
The Salt House- Chichester

The Salt House is a bright beachside home, enclosed upon ½ acre of lush paddock fields. This modern detached house is located five minutes from West Wittering Beach and features a Swimming Pool with a decking patio, wood-fired hot tub, outdoor dining area, large open plan kitchen with an island cooker. Large bedrooms, walk in showers and outdoor dining. Emulating the beachy vibe of coastal living, the concept behind the design of this comfortable and calming home features pared-back simplicity, calming neutral and cool textures and colours, reflecting its outdoor surroundings. The property also boasts parking with easy access for both large

CAROL HAYES
MANAGEMENT

020 7482 1555

www.carolhayesmanagement.co.uk



The Salt House- Chichester

The Salt House is a bright beachside home, enclosed upon ½ acre of lush paddock fields. This modern detached house is located five minutes from West Wittering Beach and features a Swimming Pool with a decking patio, wood-fired hot tub, outdoor dining area, large open plan kitchen with an island cooker. Large bedrooms, walk in showers and outdoor dining. Emulating the beachy vibe of coastal living, the concept behind the design of this comfortable and calming home features pared-back simplicity, calming neutral and cool textures and colours, reflecting its outdoor surroundings. The property also boasts parking with easy access for both large

CAROLHAYES
MANAGEMENT

020 7482 1555

www.carolhayesmanagement.co.uk



The Salt House- Chichester

The Salt House is a bright beachside home, enclosed upon ½ acre of lush paddock fields. This modern detached house is located five minutes from West Wittering Beach and features a Swimming Pool with a decking patio, wood-fired hot tub, outdoor dining area, large open plan kitchen with an island cooker. Large bedrooms, walk in showers and outdoor dining. Emulating the beachy vibe of coastal living, the concept behind the design of this comfortable and calming home features pared-back simplicity, calming neutral and cool textures and colours, reflecting its outdoor surroundings. The property also boasts parking with easy access for both large

CAROLHAYES
MANAGEMENT

020 7482 1555

www.carolhayesmanagement.co.uk



The Salt House- Chichester

The Salt House is a bright beachside home, enclosed upon ½ acre of lush paddock fields. This modern detached house is located five minutes from West Wittering Beach and features a Swimming Pool with a decking patio, wood-fired hot tub, outdoor dining area, large open plan kitchen with an island cooker. Large bedrooms, walk in showers and outdoor dining. Emulating the beachy vibe of coastal living, the concept behind the design of this comfortable and calming home features pared-back simplicity, calming neutral and cool textures and colours, reflecting its outdoor surroundings. The property also boasts parking with easy access for both large

CAROLHAYES
MANAGEMENT

020 7482 1555

www.carolhayesmanagement.co.uk



The Salt House- Chichester

The Salt House is a bright beachside home, enclosed upon ½ acre of lush paddock fields. This modern detached house is located five minutes from West Wittering Beach and features a Swimming Pool with a decking patio, wood-fired hot tub, outdoor dining area, large open plan kitchen with an island cooker. Large bedrooms, walk in showers and outdoor dining. Emulating the beachy vibe of coastal living, the concept behind the design of this comfortable and calming home features pared-back simplicity, calming neutral and cool textures and colours, reflecting its outdoor surroundings. The property also boasts parking with easy access for both large

CAROLHAYES
MANAGEMENT

020 7482 1555

www.carolhayesmanagement.co.uk



The Salt House- Chichester

The Salt House is a bright beachside home, enclosed upon ½ acre of lush paddock fields. This modern detached house is located five minutes from West Wittering Beach and features a Swimming Pool with a decking patio, wood-fired hot tub, outdoor dining area, large open plan kitchen with an island cooker. Large bedrooms, walk in showers and outdoor dining. Emulating the beachy vibe of coastal living, the concept behind the design of this comfortable and calming home features pared-back simplicity, calming neutral and cool textures and colours, reflecting its outdoor surroundings. The property also boasts parking with easy access for both large

CAROLHAYES
MANAGEMENT

020 7482 1555

www.carolhayesmanagement.co.uk



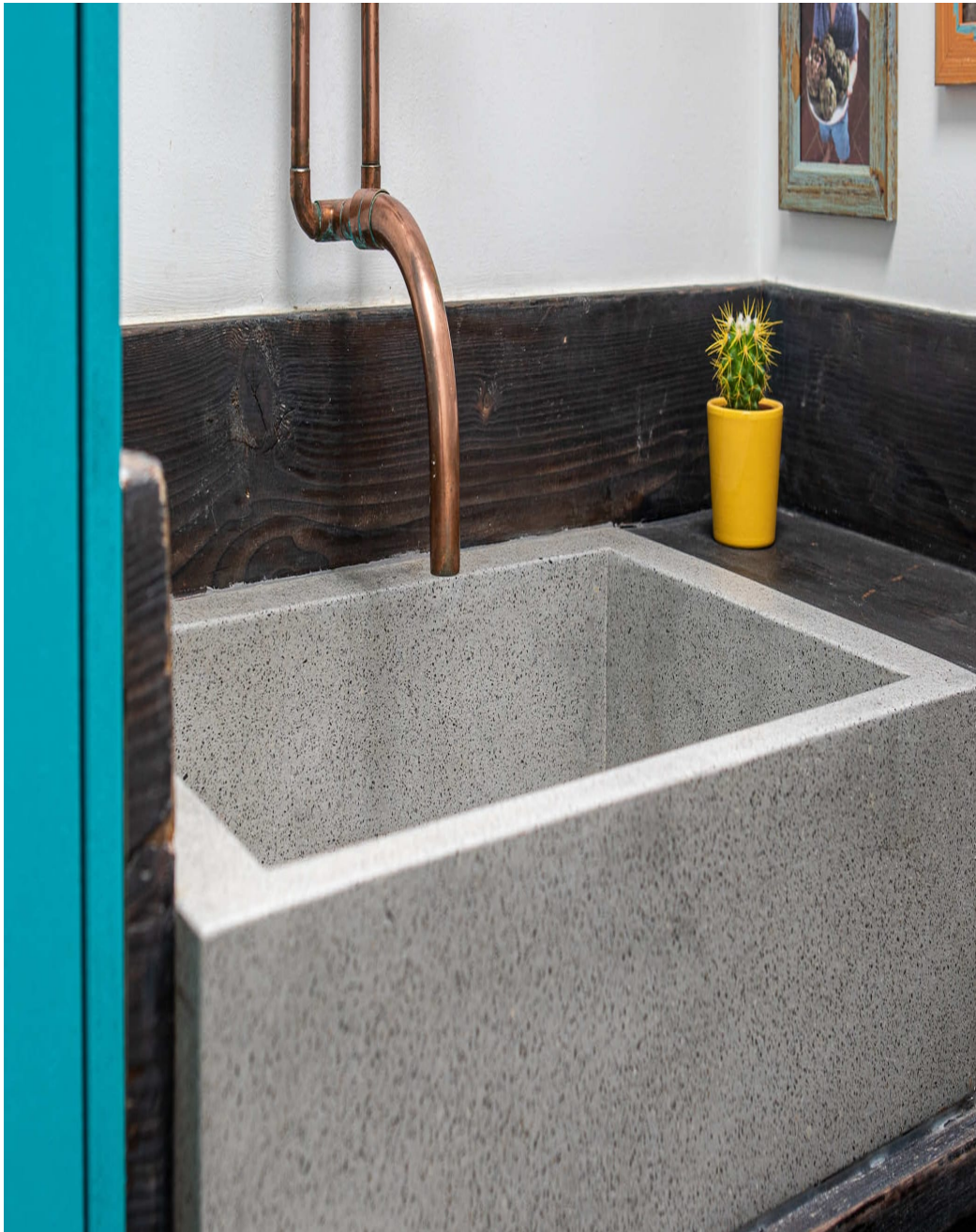
The Salt House- Chichester

The Salt House is a bright beachside home, enclosed upon ½ acre of lush paddock fields. This modern detached house is located five minutes from West Wittering Beach and features a Swimming Pool with a decking patio, wood-fired hot tub, outdoor dining area, large open plan kitchen with an island cooker. Large bedrooms, walk in showers and outdoor dining. Emulating the beachy vibe of coastal living, the concept behind the design of this comfortable and calming home features pared-back simplicity, calming neutral and cool textures and colours, reflecting its outdoor surroundings. The property also boasts parking with easy access for both large

CAROLHAYES
MANAGEMENT

020 7482 1555

www.carolhayesmanagement.co.uk



The Salt House- Chichester

The Salt House is a bright beachside home, enclosed upon ½ acre of lush paddock fields. This modern detached house is located five minutes from West Wittering Beach and features a Swimming Pool with a decking patio, wood-fired hot tub, outdoor dining area, large open plan kitchen with an island cooker. Large bedrooms, walk in showers and outdoor dining. Emulating the beachy vibe of coastal living, the concept behind the design of this comfortable and calming home features pared-back simplicity, calming neutral and cool textures and colours, reflecting its outdoor surroundings. The property also boasts parking with easy access for both large

**CAROLHAYES
MANAGEMENT**

020 7482 1555

www.carolhayesmanagement.co.uk



The Salt House- Chichester

The Salt House is a bright beachside home, enclosed upon ½ acre of lush paddock fields. This modern detached house is located five minutes from West Wittering Beach and features a Swimming Pool with a decking patio, wood-fired hot tub, outdoor dining area, large open plan kitchen with an island cooker. Large bedrooms, walk in showers and outdoor dining. Emulating the beachy vibe of coastal living, the concept behind the design of this comfortable and calming home features pared-back simplicity, calming neutral and cool textures and colours, reflecting its outdoor surroundings. The property also boasts parking with easy access for both large

**CAROLHAYES
MANAGEMENT**

020 7482 1555

www.carolhayesmanagement.co.uk



The Salt House- Chichester

The Salt House is a bright beachside home, enclosed upon ½ acre of lush paddock fields. This modern detached house is located five minutes from West Wittering Beach and features a Swimming Pool with a decking patio, wood-fired hot tub, outdoor dining area, large open plan kitchen with an island cooker. Large bedrooms, walk in showers and outdoor dining. Emulating the beachy vibe of coastal living, the concept behind the design of this comfortable and calming home features pared-back simplicity, calming neutral and cool textures and colours, reflecting its outdoor surroundings. The property also boasts parking with easy access for both large

**CAROLHAYES
MANAGEMENT**

020 7482 1555

www.carolhayesmanagement.co.uk



The Salt House- Chichester

The Salt House is a bright beachside home, enclosed upon ½ acre of lush paddock fields. This modern detached house is located five minutes from West Wittering Beach and features a Swimming Pool with a decking patio, wood-fired hot tub, outdoor dining area, large open plan kitchen with an island cooker. Large bedrooms, walk in showers and outdoor dining. Emulating the beachy vibe of coastal living, the concept behind the design of this comfortable and calming home features pared-back simplicity, calming neutral and cool textures and colours, reflecting its outdoor surroundings. The property also boasts parking with easy access for both large

CAROL HAYES
MANAGEMENT

020 7482 1555

www.carolhayesmanagement.co.uk



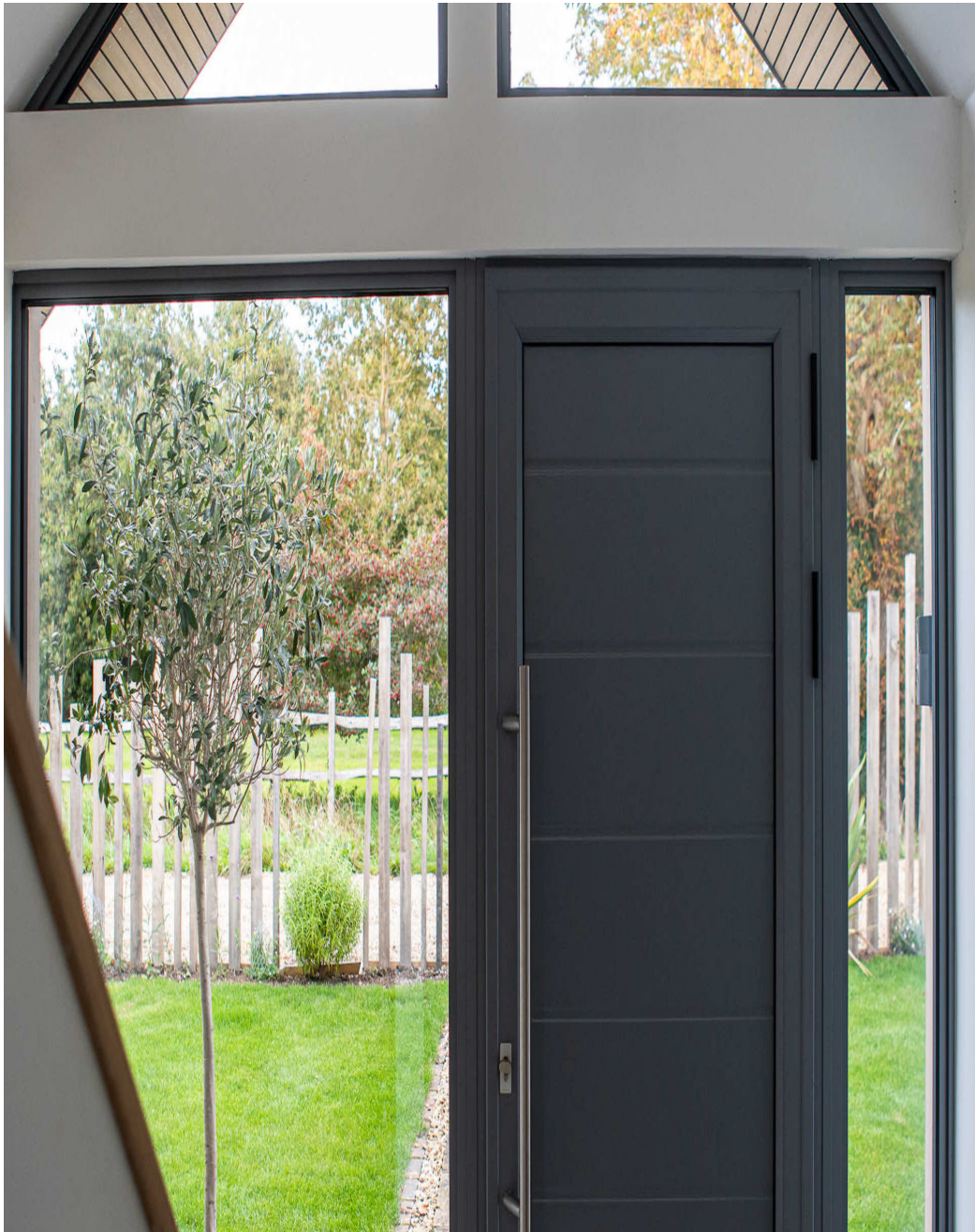
The Salt House- Chichester

The Salt House is a bright beachside home, enclosed upon ½ acre of lush paddock fields. This modern detached house is located five minutes from West Wittering Beach and features a Swimming Pool with a decking patio, wood-fired hot tub, outdoor dining area, large open plan kitchen with an island cooker. Large bedrooms, walk in showers and outdoor dining. Emulating the beachy vibe of coastal living, the concept behind the design of this comfortable and calming home features pared-back simplicity, calming neutral and cool textures and colours, reflecting its outdoor surroundings. The property also boasts parking with easy access for both large

CAROLHAYES
MANAGEMENT

020 7482 1555

www.carolhayesmanagement.co.uk



The Salt House- Chichester

The Salt House is a bright beachside home, enclosed upon ½ acre of lush paddock fields. This modern detached house is located five minutes from West Wittering Beach and features a Swimming Pool with a decking patio, wood-fired hot tub, outdoor dining area, large open plan kitchen with an island cooker. Large bedrooms, walk in showers and outdoor dining. Emulating the beachy vibe of coastal living, the concept behind the design of this comfortable and calming home features pared-back simplicity, calming neutral and cool textures and colours, reflecting its outdoor surroundings. The property also boasts parking with easy access for both large

CAROLHAYES
MANAGEMENT

020 7482 1555

www.carolhayesmanagement.co.uk



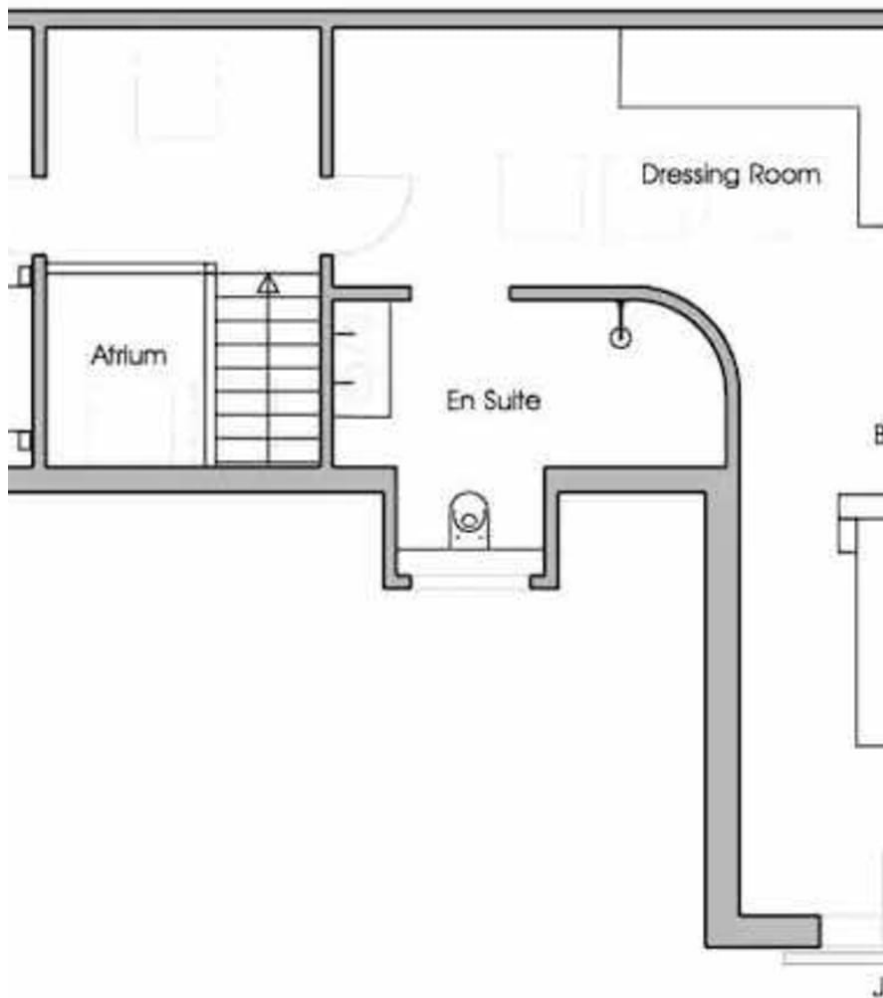
The Salt House- Chichester

The Salt House is a bright beachside home, enclosed upon ½ acre of lush paddock fields. This modern detached house is located five minutes from West Wittering Beach and features a Swimming Pool with a decking patio, wood-fired hot tub, outdoor dining area, large open plan kitchen with an island cooker. Large bedrooms, walk in showers and outdoor dining. Emulating the beachy vibe of coastal living, the concept behind the design of this comfortable and calming home features pared-back simplicity, calming neutral and cool textures and colours, reflecting its outdoor surroundings. The property also boasts parking with easy access for both large

CAROLHAYES
MANAGEMENT

020 7482 1555

www.carolhayesmanagement.co.uk



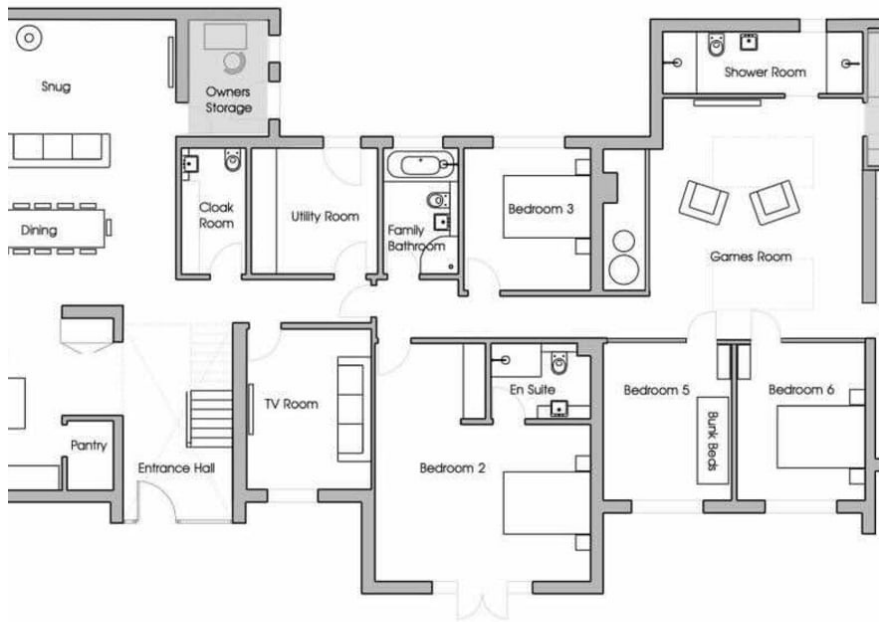
The Salt House- Chichester

The Salt House is a bright beachside home, enclosed upon ½ acre of lush paddock fields. This modern detached house is located five minutes from West Wittering Beach and features a Swimming Pool with a decking patio, wood-fired hot tub, outdoor dining area, large open plan kitchen with an island cooker. Large bedrooms, walk in showers and outdoor dining. Emulating the beachy vibe of coastal living, the concept behind the design of this comfortable and calming home features pared-back simplicity, calming neutral and cool textures and colours, reflecting its outdoor surroundings. The property also boasts parking with easy access for both large

CAROLHAYES
MANAGEMENT

020 7482 1555

www.carolhayesmanagement.co.uk



The Salt House- Chichester

The Salt House is a bright beachside home, enclosed upon ½ acre of lush paddock fields. This modern detached house is located five minutes from West Wittering Beach and features a Swimming Pool with a decking patio, wood-fired hot tub, outdoor dining area, large open plan kitchen with an island cooker. Large bedrooms, walk in showers and outdoor dining. Emulating the beachy vibe of coastal living, the concept behind the design of this comfortable and calming home features pared-back simplicity, calming neutral and cool textures and colours, reflecting its outdoor surroundings. The property also boasts parking with easy access for both large

CAROL HAYES
MANAGEMENT

020 7482 1555

www.carolhayesmanagement.co.uk