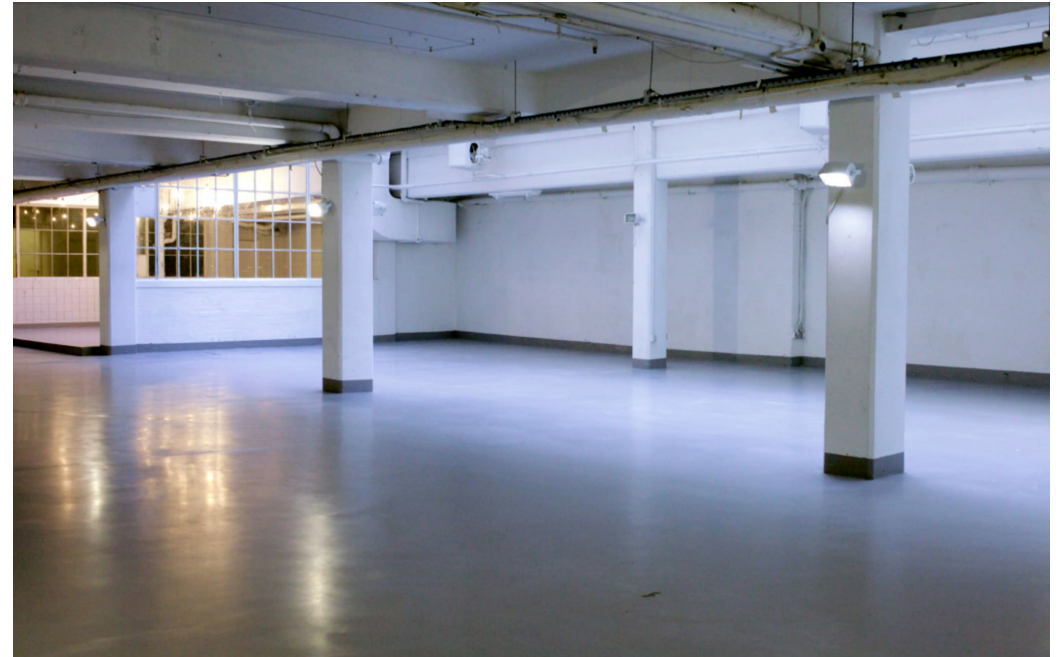


Record Factory W1

The Record Factory Soho is a unique venue located in the heart of central London. It has two rooms covering approximately 6,000 sq ft. and is suitable for exhibitions, presentations, trade and fashion shows, press days, launch parties and so much more. The main gallery (the big white space) is approximately 450 sqm and holds up to 260 people, and the rear studio (the brick-walled room) is 120sqm and holds up to 110 (if hired on it's own or 60 if hired in conjunction with the main gallery). Total venue capacity is 320. There are also two entrances. Ideal for press days, product launches and special events.





Record Factory W1

The Record Factory Soho is a unique venue located in the heart of central London. It has two rooms covering approximately 6,000 sq ft. and is suitable for exhibitions, presentations, trade and fashion shows, press days, launch parties and so much more. The main gallery (the big white space) is approximately 450 sqm and holds up to 260 people, and the rear studio (the brick-walled room) is 120sqm and holds up to 110 (if hired on it's own or 60 if hired in conjunction with the main gallery). Total venue capacity is 320. There are also two entrances. Ideal for press days, product launches and special events.

CAROLHAYES
MANAGEMENT
THE ARTS & CRAFTS MANAGEMENT

020 7482 1555

www.carolhayesmanagement.co.uk



Record Factory W1

The Record Factory Soho is a unique venue located in the heart of central London. It has two rooms covering approximately 6,000 sq ft. and is suitable for exhibitions, presentations, trade and fashion shows, press days, launch parties and so much more. The main gallery (the big white space) is approximately 450 sqm and holds up to 260 people, and the rear studio (the brick-walled room) is 120sqm and holds up to 110 (if hired on it's own or 60 if hired in conjunction with the main gallery). Total venue capacity is 320. There are also two entrances. Ideal for press days, product launches and special events.

CAROLHAYES
MANAGEMENT

020 7482 1555

www.carolhayesmanagement.co.uk



Record Factory W1

The Record Factory Soho is a unique venue located in the heart of central London. It has two rooms covering approximately 6,000 sq ft. and is suitable for exhibitions, presentations, trade and fashion shows, press days, launch parties and so much more. The main gallery (the big white space) is approximately 450 sqm and holds up to 260 people, and the rear studio (the brick-walled room) is 120sqm and holds up to 110 (if hired on it's own or 60 if hired in conjunction with the main gallery). Total venue capacity is 320. There are also two entrances. Ideal for press days, product launches and special events.

CAROL HAYES
MANAGEMENT
CREATIVE & PROJECT MANAGEMENT

020 7482 1555

www.carolhayesmanagement.co.uk



Record Factory W1

The Record Factory Soho is a unique venue located in the heart of central London. It has two rooms covering approximately 6,000 sq ft. and is suitable for exhibitions, presentations, trade and fashion shows, press days, launch parties and so much more. The main gallery (the big white space) is approximately 450 sqm and holds up to 260 people, and the rear studio (the brick-walled room) is 120sqm and holds up to 110 (if hired on it's own or 60 if hired in conjunction with the main gallery). Total venue capacity is 320. There are also two entrances. Ideal for press days, product launches and special events.

CAROLHAYES
MANAGEMENT
CREATIVE BUSINESS MANAGEMENT

020 7482 1555

www.carolhayesmanagement.co.uk



Record Factory W1

The Record Factory Soho is a unique venue located in the heart of central London. It has two rooms covering approximately 6,000 sq ft. and is suitable for exhibitions, presentations, trade and fashion shows, press days, launch parties and so much more. The main gallery (the big white space) is approximately 450 sqm and holds up to 260 people, and the rear studio (the brick-walled room) is 120sqm and holds up to 110 (if hired on it's own or 60 if hired in conjunction with the main gallery). Total venue capacity is 320. There are also two entrances. Ideal for press days, product launches and special events.

CAROL HAYES
MANAGEMENT

020 7482 1555

www.carolhayesmanagement.co.uk



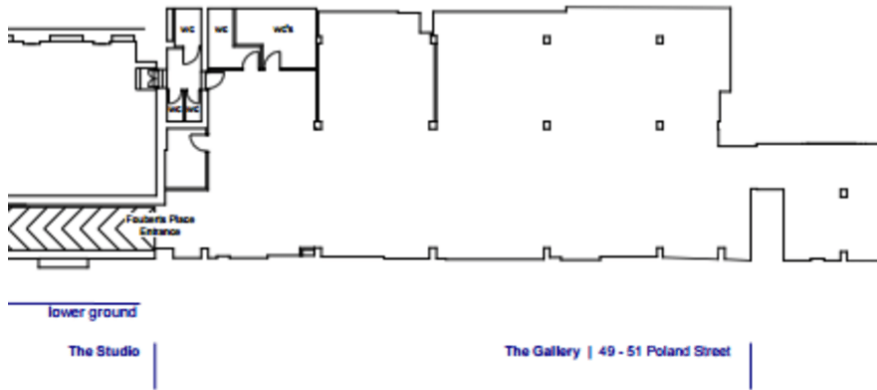
Record Factory W1

The Record Factory Soho is a unique venue located in the heart of central London. It has two rooms covering approximately 6,000 sq ft. and is suitable for exhibitions, presentations, trade and fashion shows, press days, launch parties and so much more. The main gallery (the big white space) is approximately 450 sqm and holds up to 260 people, and the rear studio (the brick-walled room) is 120sqm and holds up to 110 (if hired on it's own or 60 if hired in conjunction with the main gallery). Total venue capacity is 320. There are also two entrances. Ideal for press days, product launches and special events.

CAROLHAYES
MANAGEMENT
THE ARTS & CULTURE MANAGEMENT

020 7482 1555

www.carolhayesmanagement.co.uk



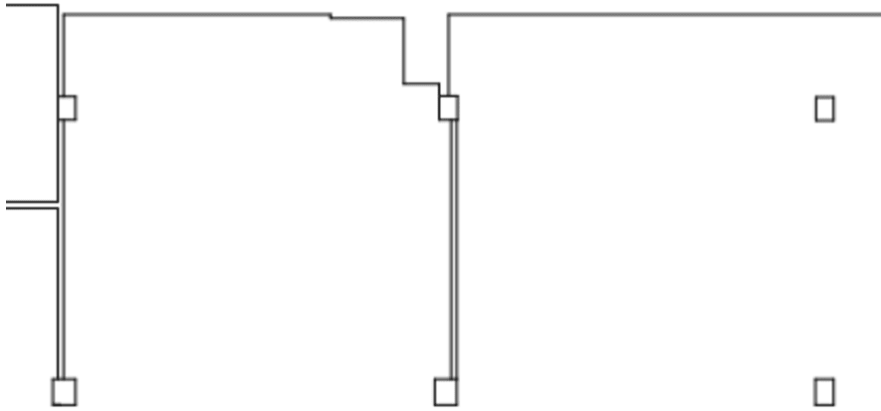
Record Factory W1

The Record Factory Soho is a unique venue located in the heart of central London. It has two rooms covering approximately 6000 sq ft. and is suitable for exhibitions, presentations, trade and fashion shows, press days, launch parties and so much more. The main gallery (the big white space) is approximately 450 sqm and holds up to 260 people, and the rear studio (the brick-walled room) is 120sqm and holds up to 110 (if hired on it's own or 60 if hired in conjunction with the main gallery). Total venue capacity is 320. There are also two entrances. Ideal for press days, product launches and special events.



020 7482 1555

www.carolhayesmanagement.co.uk



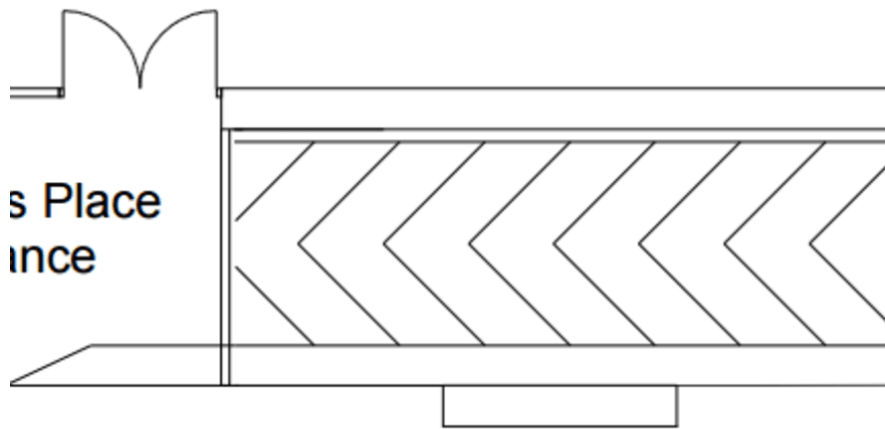
Record Factory W1

The Record Factory Soho is a unique venue located in the heart of central London. It has two rooms covering approximately 6000 sq ft. and is suitable for exhibitions, presentations, trade and fashion shows, press days, launch parties and so much more. The main gallery (the big white space) is approximately 450 sqm and holds up to 260 people, and the rear studio (the brick-walled room) is 120sqm and holds up to 110 (if hired on it's own or 60 if hired in conjunction with the main gallery). Total venue capacity is 320. There are also two entrances. Ideal for press days, product launches and special events.

CAROLHAYES
MANAGEMENT
CREATIVE ARTISTS MANAGEMENT

020 7482 1555

www.carolhayesmanagement.co.uk



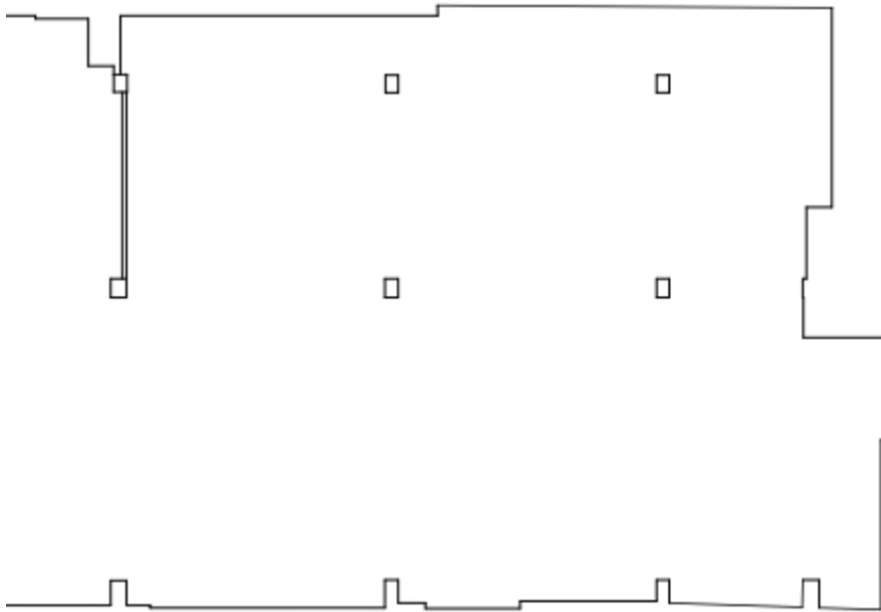
Record Factory W1

The Record Factory Soho is a unique venue located in the heart of central London. It has two rooms covering approximately 6000 sq ft. and is suitable for exhibitions, presentations, trade and fashion shows, press days, launch parties and so much more. The main gallery (the big white space) is approximately 450 sqm and holds up to 260 people, and the rear studio (the brick-walled room) is 120sqm and holds up to 110 (if hired on it's own or 60 if hired in conjunction with the main gallery). Total venue capacity is 320. There are also two entrances. Ideal for press days, product launches and special events.

CAROLHAYES
MANAGEMENT

020 7482 1555

www.carolhayesmanagement.co.uk



Record Factory W1

The Record Factory Soho is a unique venue located in the heart of central London. It has two rooms covering approximately 6000 sq ft. and is suitable for exhibitions, presentations, trade and fashion shows, press days, launch parties and so much more. The main gallery (the big white space) is approximately 450 sqm and holds up to 260 people, and the rear studio (the brick-walled room) is 120sqm and holds up to 110 (if hired on it's own or 60 if hired in conjunction with the main gallery). Total venue capacity is 320. There are also two entrances. Ideal for press days, product launches and special events.

CAROLHAYES
MANAGEMENT
CREATIVE & PROJECT MANAGEMENT

020 7482 1555

www.carolhayesmanagement.co.uk