

Mound Surrey EXCLUSIVE

Within the M 25, 1 hour 20 minutes from central London. An elegant 5 bedroom house that was built in 1876 on the second highest point in Surrey and is believed to be the first poured concrete dwelling in England. Previously a nudist colony, it boasts 2.5 acres of gorgeous grounds. Both the kitchen and drawing room are 23 feet long.





Mound Surrey EXCLUSIVE

Within the M 25, 1 hour 20 minutes from central London. An elegant 5 bedroom house that was built in 1875 on the second highest point in Surrey and is believed to be the first poured concrete dwelling in England. Previously a nudist colony, it boasts 2.5 acres of gorgeous grounds. Both the kitchen and drawing room are 23 feet long.

CAROL HAYES
MANAGEMENT
CREATIVE ARTIST & STYLE MANAGEMENT

020 7482 1555

www.carolhayesmanagement.co.uk



Mound Surrey EXCLUSIVE

Within the M 25, 1 hour 20 minutes from central London. An elegant 5 bedroom house that was built in 1975 on the second highest point in Surrey and is believed to be the first poured concrete dwelling in England. Previously a nudist colony, it boasts 2.5 acres of gorgeous grounds. Both the kitchen and drawing room are 23 feet long.

CAROL HAYES
MANAGEMENT
CREATIVE ARTIST & STYLE MANAGEMENT

020 7482 1555

www.carolhayesmanagement.co.uk



Mound Surrey EXCLUSIVE

Within the M 25, 1 hour 20 minutes from central London. An elegant 5 bedroom house that was built in 1975 on the second highest point in Surrey and is believed to be the first poured concrete dwelling in England. Previously a nudist colony, it boasts 2.5 acres of gorgeous grounds. Both the kitchen and drawing room are 23 feet long.

CAROL HAYES
MANAGEMENT
CREATIVE ARTIST & STYLE MANAGEMENT

020 7482 1555

www.carolhayesmanagement.co.uk



Mound Surrey EXCLUSIVE

Within the M 25, 1 hour 20 minutes from central London. An elegant 5 bedroom house that was built in 1875 on the second highest point in Surrey and is believed to be the first poured concrete dwelling in England. Previously a nudist colony, it boasts 2.5 acres of gorgeous grounds. Both the kitchen and drawing room are 23 feet long.

CAROL HAYES
MANAGEMENT
CREATIVE ARTIST & STYLE MANAGEMENT

020 7482 1555

www.carolhayesmanagement.co.uk



Mound Surrey EXCLUSIVE

Within the M 25, 1 hour 20 minutes from central London. An elegant 5 bedroom house that was built in 1975 on the second highest point in Surrey and is believed to be the first poured concrete dwelling in England. Previously a nudist colony, it boasts 2.5 acres of gorgeous grounds. Both the kitchen and drawing room are 23 feet long.

CAROL HAYES
MANAGEMENT
CREATIVE ARTIST & STYLE MANAGEMENT

020 7482 1555

www.carolhayesmanagement.co.uk



Mound Surrey EXCLUSIVE

Within the M 25, 1 hour 20 minutes from central London. An elegant 5 bedroom house that was built in 1975 on the second highest point in Surrey and is believed to be the first poured concrete dwelling in England. Previously a nudist colony, it boasts 2.5 acres of gorgeous grounds. Both the kitchen and drawing room are 23 feet long.

CAROL HAYES
MANAGEMENT
CREATIVE ARTIST & STYLE MANAGEMENT

020 7482 1555

www.carolhayesmanagement.co.uk



Mound Surrey EXCLUSIVE

Within the M 25, 1 hour 20 minutes from central London. An elegant 5 bedroom house that was built in 1975 on the second highest point in Surrey and is believed to be the first poured concrete dwelling in England. Previously a nudist colony, it boasts 2.5 acres of gorgeous grounds. Both the kitchen and drawing room are 23 feet long.

CAROL HAYES
MANAGEMENT
CREATIVE ARTIST & STYLE MANAGEMENT

020 7482 1555

www.carolhayesmanagement.co.uk



Mound Surrey EXCLUSIVE

Within the M 25, 1 hour 20 minutes from central London. An elegant 5 bedroom house that was built in 1975 on the second highest point in Surrey and is believed to be the first poured concrete dwelling in England. Previously a nudist colony, it boasts 2.5 acres of gorgeous grounds. Both the kitchen and drawing room are 23 feet long.

CAROL HAYES
MANAGEMENT
CREATIVE ARTIST & STYLE MANAGEMENT

020 7482 1555

www.carolhayesmanagement.co.uk



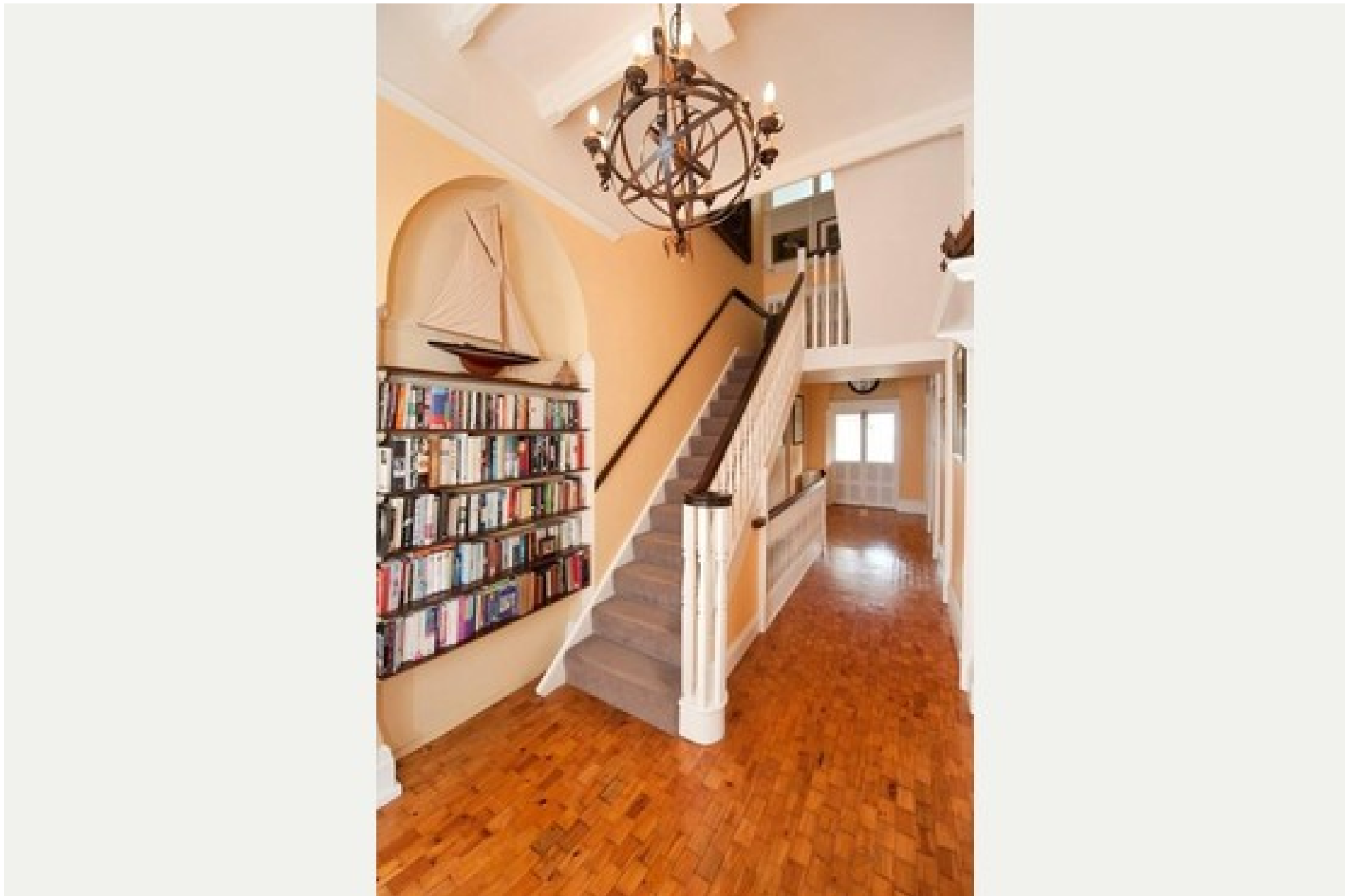
Mound Surrey EXCLUSIVE

Within the M 25, 1 hour 20 minutes from central London. An elegant 5 bedroom house that was built in 1975 on the second highest point in Surrey and is believed to be the first poured concrete dwelling in England. Previously a nudist colony, it boasts 2.5 acres of gorgeous grounds. Both the kitchen and drawing room are 23 feet long.

CAROL HAYES
MANAGEMENT
CREATIVE ARTIST & STYLE MANAGEMENT

020 7482 1555

www.carolhayesmanagement.co.uk



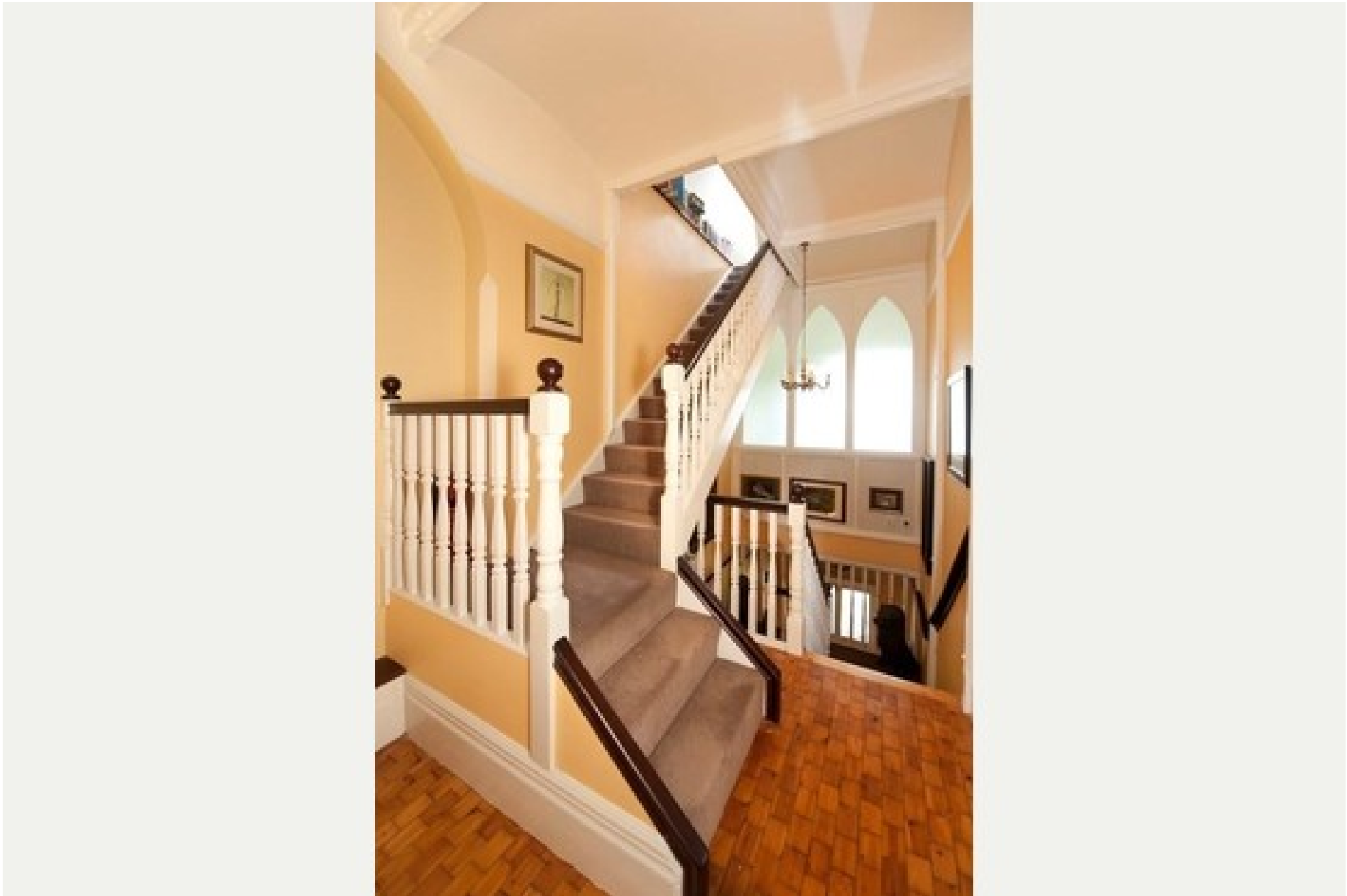
Mound Surrey EXCLUSIVE

Within the M 25, 1 hour 20 minutes from central London. An elegant 5 bedroom house that was built in 1975 on the second highest point in Surrey and is believed to be the first poured concrete dwelling in England. Previously a nudist colony, it boasts 2.5 acres of gorgeous grounds. Both the kitchen and drawing room are 23 feet long.

CAROL HAYES
MANAGEMENT
CREATIVE ARTIST & STYLE MANAGEMENT

020 7482 1555

www.carolhayesmanagement.co.uk



Mound Surrey EXCLUSIVE

Within the M 25, 1 hour 20 minutes from central London. An elegant 5 bedroom house that was built in 1875 on the second highest point in Surrey and is believed to be the first poured concrete dwelling in England. Previously a nudist colony, it boasts 2.5 acres of gorgeous grounds. Both the kitchen and drawing room are 23 feet long.

CAROL HAYES
MANAGEMENT
CREATIVE ARTIST & STYLE MANAGEMENT

020 7482 1555

www.carolhayesmanagement.co.uk



Mound Surrey EXCLUSIVE

Within the M 25, 1 hour 20 minutes from central London. An elegant 5 bedroom house that was built in 1975 on the second highest point in Surrey and is believed to be the first poured concrete dwelling in England. Previously a nudist colony, it boasts 2.5 acres of gorgeous grounds. Both the kitchen and drawing room are 23 feet long.

CAROL HAYES
MANAGEMENT
CREATIVE ARTIST & STYLE MANAGEMENT

020 7482 1555

www.carolhayesmanagement.co.uk



Mound Surrey EXCLUSIVE

Within the M 25, 1 hour 20 minutes from central London. An elegant 5 bedroom house that was built in 1975 on the second highest point in Surrey and is believed to be the first poured concrete dwelling in England. Previously a nudist colony, it boasts 2.5 acres of gorgeous grounds. Both the kitchen and drawing room are 23 feet long.

CAROL HAYES
MANAGEMENT
CREATIVE ARTIST & STYLE MANAGEMENT

020 7482 1555

www.carolhayesmanagement.co.uk



Mound Surrey EXCLUSIVE

Within the M 25, 1 hour 20 minutes from central London. An elegant 5 bedroom house that was built in 1975 on the second highest point in Surrey and is believed to be the first poured concrete dwelling in England. Previously a nudist colony, it boasts 2.5 acres of gorgeous grounds. Both the kitchen and drawing room are 23 feet long.

CAROL HAYES
MANAGEMENT
CREATIVE ARTIST & STYLE MANAGEMENT

020 7482 1555

www.carolhayesmanagement.co.uk



Mound Surrey EXCLUSIVE

Within the M 25, 1 hour 20 minutes from central London. An elegant 5 bedroom house that was built in 1875 on the second highest point in Surrey and is believed to be the first poured concrete dwelling in England. Previously a nudist colony, it boasts 2.5 acres of gorgeous grounds. Both the kitchen and drawing room are 23 feet long.

CAROL HAYES
MANAGEMENT
CREATIVE ARTIST & STYLE MANAGEMENT

020 7482 1555

www.carolhayesmanagement.co.uk



Mound Surrey EXCLUSIVE

Within the M 25, 1 hour 20 minutes from central London. An elegant 5 bedroom house that was built in 1975 on the second highest point in Surrey and is believed to be the first poured concrete dwelling in England. Previously a nudist colony, it boasts 2.5 acres of gorgeous grounds. Both the kitchen and drawing room are 23 feet long.

CAROL HAYES
MANAGEMENT
CREATIVE ARTIST & STYLE MANAGEMENT

020 7482 1555

www.carolhayesmanagement.co.uk



Mound Surrey EXCLUSIVE

Within the M 25, 1 hour 20 minutes from central London. An elegant 5 bedroom house that was built in 1975 on the second highest point in Surrey and is believed to be the first poured concrete dwelling in England. Previously a nudist colony, it boasts 2.5 acres of gorgeous grounds. Both the kitchen and drawing room are 23 feet long.

CAROL HAYES
MANAGEMENT
CREATIVE ARTIST & STYLE MANAGEMENT

020 7482 1555

www.carolhayesmanagement.co.uk



Mound Surrey EXCLUSIVE

Within the M 25, 1 hour 20 minutes from central London. An elegant 5 bedroom house that was built in 1975 on the second highest point in Surrey and is believed to be the first poured concrete dwelling in England. Previously a nudist colony, it boasts 2.5 acres of gorgeous grounds. Both the kitchen and drawing room are 23 feet long.

CAROL HAYES
MANAGEMENT
CREATIVE ARTIST & STYLE MANAGEMENT

020 7482 1555

www.carolhayesmanagement.co.uk



Mound Surrey EXCLUSIVE

Within the M 25, 1 hour 20 minutes from central London. An elegant 5 bedroom house that was built in 1975 on the second highest point in Surrey and is believed to be the first poured concrete dwelling in England. Previously a nudist colony, it boasts 2.5 acres of gorgeous grounds. Both the kitchen and drawing room are 23 feet long.

CAROLHAYES
MANAGEMENT
CREATIVE ARTIST & STYLE MANAGEMENT

020 7482 1555

www.carolhayesmanagement.co.uk