

# Tanner Street SE1

Recently refurbished large industrial/warehouse space. An ideal location for a music video or longer haul shoot.; for private and creative events, filming and photography, exhibitions, workshops and conferences. Catering packages available for corporate events. Floors and rooms can be hired out separately. Originally a Victorian tannery, it retains many original features. Three stunning floors feature wooden beams and floorboards and exposed brick walls. The site also offers a walled yard, a rooftop with views of central London, and a sparse industrial concrete garage space. It is located just outside of the Congestion Charge zone, and has on-site parking for up to 18 cars.





## Tanner Street SE1

Recently refurbished large industrial/warehouse space. An ideal location for a music video or longer haul shoot; private and creative events, filming and photography, exhibitions, workshops and conferences. Catering packages available for corporate events. Floors and rooms can be hired out separately. Originally a Victorian tannery, it retains many original features. Three stunning floors feature wooden beams and floorboards and exposed brick walls. The site also offers a walled yard, a rooftop with views of central London, and a sparse industrial concrete garage space. It is located just outside of the Congestion Charge zone, and has

**CAROLHAYES**  
**MANAGEMENT**

020 7482 1555

[www.carolhayesmanagement.co.uk](http://www.carolhayesmanagement.co.uk)



## Tanner Street SE1

Recently refurbished large industrial/warehouse space. An ideal location for a music video or longer haul shoot; for private and creative events, filming and photography, exhibitions, workshops and conferences. Catering packages available for corporate events. Floors and rooms can be hired out separately. Originally a Victorian tannery, it retains many original features. Three stunning floors feature wooden beams and floorboards and exposed brick walls. The site also offers a walled yard, a rooftop with views of central London, and a sparse industrial concrete garage space. It is located just outside of the Congestion Charge zone, and has

**CAROLHAYES**  
**MANAGEMENT**

020 7482 1555

[www.carolhayesmanagement.co.uk](http://www.carolhayesmanagement.co.uk)



## Tanner Street SE1

Recently refurbished large industrial/warehouse space. An ideal location for a music video or longer haul shoot; for private and creative events, filming and photography, exhibitions, workshops and conferences. Catering packages available for corporate events. Floors and rooms can be hired out separately. Originally a Victorian tannery, it retains many original features. Three stunning floors feature wooden beams and floorboards and exposed brick walls. The site also offers a walled yard, a rooftop with views of central London, and a sparse industrial concrete garage space. It is located just outside of the Congestion Charge zone, and has

**CAROLHAYES  
MANAGEMENT**

020 7482 1555

[www.carolhayesmanagement.co.uk](http://www.carolhayesmanagement.co.uk)



## Tanner Street SE1

Recently refurbished large industrial/warehouse space. An ideal location for a music video or longer haul shoot; private and creative events, filming and photography, exhibitions, workshops and conferences. Catering packages available for corporate events. Floors and rooms can be hired out separately. Originally a Victorian tannery, it retains many original features. Three stunning floors feature wooden beams and floorboards and exposed brick walls. The site also offers a walled yard, a rooftop with views of central London, and a sparse industrial concrete garage space. It is located just outside of the Congestion Charge zone, and has

**CAROLHAYES**  
**MANAGEMENT**

020 7482 1555

[www.carolhayesmanagement.co.uk](http://www.carolhayesmanagement.co.uk)



## Tanner Street SE1

Recently refurbished large industrial/warehouse space. An ideal location for a music video or longer haul shoot; for private and creative events, filming and photography, exhibitions, workshops and conferences. Catering packages available for corporate events. Floors and rooms can be hired out separately. Originally a Victorian tannery, it retains many original features. Three stunning floors feature wooden beams and floorboards and exposed brick walls. The site also offers a walled yard, a rooftop with views of central London, and a sparse industrial concrete garage space. It is located just outside of the Congestion Charge zone, and has

**CAROL HAYES**  
MANAGEMENT

020 7482 1555

[www.carolhayesmanagement.co.uk](http://www.carolhayesmanagement.co.uk)



## Tanner Street SE1

Recently refurbished large industrial/warehouse space. An ideal location for a music video or longer haul shoot; for private and creative events, filming and photography, exhibitions, workshops and conferences. Catering packages available for corporate events. Floors and rooms can be hired out separately. Originally a Victorian tannery, it retains many original features. Three stunning floors feature wooden beams and floorboards and exposed brick walls. The site also offers a walled yard, a rooftop with views of central London, and a sparse industrial concrete garage space. It is located just outside of the Congestion Charge zone, and has

**CAROLHAYES**  
**MANAGEMENT**

020 7482 1555

[www.carolhayesmanagement.co.uk](http://www.carolhayesmanagement.co.uk)



## Tanner Street SE1

Recently refurbished large industrial/warehouse space. An ideal location for a music video or longer haul shoot; for private and creative events, filming and photography, exhibitions, workshops and conferences. Catering packages available for corporate events. Floors and rooms can be hired out separately. Originally a Victorian tannery, it retains many original features. Three stunning floors feature wooden beams and floorboards and exposed brick walls. The site also offers a walled yard, a rooftop with views of central London, and a sparse industrial concrete garage space. It is located just outside of the Congestion Charge zone, and has

**CAROLHAYES  
MANAGEMENT**

020 7482 1555

[www.carolhayesmanagement.co.uk](http://www.carolhayesmanagement.co.uk)





## Tanner Street SE1

Recently refurbished large industrial/warehouse space. An ideal location for a music video or longer haul shoot; for private and creative events, filming and photography, exhibitions, workshops and conferences. Catering packages available for corporate events. Floors and rooms can be hired out separately. Originally a Victorian tannery, it retains many original features. Three stunning floors feature wooden beams and floorboards and exposed brick walls. The site also offers a walled yard, a rooftop with views of central London, and a sparse industrial concrete garage space. It is located just outside of the Congestion Charge zone, and has

**CAROLHAYES  
MANAGEMENT**

020 7482 1555

[www.carolhayesmanagement.co.uk](http://www.carolhayesmanagement.co.uk)



## Tanner Street SE1

Recently refurbished large industrial/warehouse space. An ideal location for a music video or longer haul shoot; for private and creative events, filming and photography, exhibitions, workshops and conferences. Catering packages available for corporate events. Floors and rooms can be hired out separately. Originally a Victorian tannery, it retains many original features. Three stunning floors feature wooden beams and floorboards and exposed brick walls. The site also offers a walled yard, a rooftop with views of central London, and a sparse industrial concrete garage space. It is located just outside of the Congestion Charge zone, and has

**CAROLHAYES**  
**MANAGEMENT**

020 7482 1555

[www.carolhayesmanagement.co.uk](http://www.carolhayesmanagement.co.uk)



## Tanner Street SE1

Recently refurbished large industrial/warehouse space. An ideal location for a music video or longer haul shoot; for private and creative events, filming and photography, exhibitions, workshops and conferences. Catering packages available for corporate events. Floors and rooms can be hired out separately. Originally a Victorian tannery, it retains many original features. Three stunning floors feature wooden beams and floorboards and exposed brick walls. The site also offers a walled yard, a rooftop with views of central London, and a sparse industrial concrete garage space. It is located just outside of the Congestion Charge zone, and has

**CAROLHAYES  
MANAGEMENT**

020 7482 1555

[www.carolhayesmanagement.co.uk](http://www.carolhayesmanagement.co.uk)



## Tanner Street SE1

Recently refurbished large industrial/warehouse space. An ideal location for a music video or longer haul shoot; for private and creative events, filming and photography, exhibitions, workshops and conferences. Catering packages available for corporate events. Floors and rooms can be hired out separately. Originally a Victorian tannery, it retains many original features. Three stunning floors feature wooden beams and floorboards and exposed brick walls. The site also offers a walled yard, a rooftop with views of central London, and a sparse industrial concrete garage space. It is located just outside of the Congestion Charge zone, and has

**CAROLHAYES**  
**MANAGEMENT**

020 7482 1555

[www.carolhayesmanagement.co.uk](http://www.carolhayesmanagement.co.uk)



## Tanner Street SE1

Recently refurbished large industrial/warehouse space. An ideal location for a music video or longer haul shoot; for private and creative events, filming and photography, exhibitions, workshops and conferences. Catering packages available for corporate events. Floors and rooms can be hired out separately. Originally a Victorian tannery, it retains many original features. Three stunning floors feature wooden beams and floorboards and exposed brick walls. The site also offers a walled yard, a rooftop with views of central London, and a sparse industrial concrete garage space. It is located just outside of the Congestion Charge zone, and has

**CAROL HAYES**  
**MANAGEMENT**

020 7482 1555

[www.carolhayesmanagement.co.uk](http://www.carolhayesmanagement.co.uk)



## Tanner Street SE1

Recently refurbished large industrial/warehouse space. An ideal location for a music video or longer haul shoot; private and creative events, filming and photography, exhibitions, workshops and conferences. Catering packages available for corporate events. Floors and rooms can be hired out separately. Originally a Victorian tannery, it retains many original features. Three stunning floors feature wooden beams and floorboards and exposed brick walls. The site also offers a walled yard, a rooftop with views of central London, and a sparse industrial concrete garage space. It is located just outside of the Congestion Charge zone, and has

**CAROLHAYES  
MANAGEMENT**

020 7482 1555

[www.carolhayesmanagement.co.uk](http://www.carolhayesmanagement.co.uk)



## Tanner Street SE1

Recently refurbished large industrial/warehouse space. An ideal location for a music video or longer haul shoot; private and creative events, filming and photography, exhibitions, workshops and conferences. Catering packages available for corporate events. Floors and rooms can be hired out separately. Originally a Victorian tannery, it retains many original features. Three stunning floors feature wooden beams and floorboards and exposed brick walls. The site also offers a walled yard, a rooftop with views of central London, and a sparse industrial concrete garage space. It is located just outside of the Congestion Charge zone, and has

**CAROLHAYES  
MANAGEMENT**

020 7482 1555

[www.carolhayesmanagement.co.uk](http://www.carolhayesmanagement.co.uk)



## Tanner Street SE1

Recently refurbished large industrial/warehouse space. An ideal location for a music video or longer haul shoot; for private and creative events, filming and photography, exhibitions, workshops and conferences. Catering packages available for corporate events. Floors and rooms can be hired out separately. Originally a Victorian tannery, it retains many original features. Three stunning floors feature wooden beams and floorboards and exposed brick walls. The site also offers a walled yard, a rooftop with views of central London, and a sparse industrial concrete garage space. It is located just outside of the Congestion Charge zone, and has

**CAROLHAYES  
MANAGEMENT**

020 7482 1555

[www.carolhayesmanagement.co.uk](http://www.carolhayesmanagement.co.uk)





## Tanner Street SE1

Recently refurbished large industrial/warehouse space. An ideal location for a music video or longer haul shoot; for private and creative events, filming and photography, exhibitions, workshops and conferences. Catering packages available for corporate events. Floors and rooms can be hired out separately. Originally a Victorian tannery, it retains many original features. Three stunning floors feature wooden beams and floorboards and exposed brick walls. The site also offers a walled yard, a rooftop with views of central London, and a sparse industrial concrete garage space. It is located just outside of the Congestion Charge zone, and has

**CAROLHAYES**  
**MANAGEMENT**

020 7482 1555

[www.carolhayesmanagement.co.uk](http://www.carolhayesmanagement.co.uk)



## Tanner Street SE1

Recently refurbished large industrial/warehouse space. An ideal location for a music video or longer haul shoot; private and creative events, filming and photography, exhibitions, workshops and conferences. Catering packages available for corporate events. Floors and rooms can be hired out separately. Originally a Victorian tannery, it retains many original features. Three stunning floors feature wooden beams and floorboards and exposed brick walls. The site also offers a walled yard, a rooftop with views of central London, and a sparse industrial concrete garage space. It is located just outside of the Congestion Charge zone, and has

**CAROLHAYES  
MANAGEMENT**

020 7482 1555

[www.carolhayesmanagement.co.uk](http://www.carolhayesmanagement.co.uk)



## Tanner Street SE1

Recently refurbished large industrial/warehouse space. An ideal location for a music video or longer haul shoot; private and creative events, filming and photography, exhibitions, workshops and conferences. Catering packages available for corporate events. Floors and rooms can be hired out separately. Originally a Victorian tannery, it retains many original features. Three stunning floors feature wooden beams and floorboards and exposed brick walls. The site also offers a walled yard, a rooftop with views of central London, and a sparse industrial concrete garage space. It is located just outside of the Congestion Charge zone, and has

**CAROLHAYES  
MANAGEMENT**

020 7482 1555

[www.carolhayesmanagement.co.uk](http://www.carolhayesmanagement.co.uk)



## Tanner Street SE1

Recently refurbished large industrial/warehouse space. An ideal location for a music video or longer haul shoot; for private and creative events, filming and photography, exhibitions, workshops and conferences. Catering packages available for corporate events. Floors and rooms can be hired out separately. Originally a Victorian tannery, it retains many original features. Three stunning floors feature wooden beams and floorboards and exposed brick walls. The site also offers a walled yard, a rooftop with views of central London, and a sparse industrial concrete garage space. It is located just outside of the Congestion Charge zone, and has

**CAROLHAYES**  
**MANAGEMENT**

020 7482 1555

[www.carolhayesmanagement.co.uk](http://www.carolhayesmanagement.co.uk)



## Tanner Street SE1

Recently refurbished large industrial/warehouse space. An ideal location for a music video or longer haul shoot; for private and creative events, filming and photography, exhibitions, workshops and conferences. Catering packages available for corporate events. Floors and rooms can be hired out separately. Originally a Victorian tannery, it retains many original features. Three stunning floors feature wooden beams and floorboards and exposed brick walls. The site also offers a walled yard, a rooftop with views of central London, and a sparse industrial concrete garage space. It is located just outside of the Congestion Charge zone, and has

**CAROL HAYES**  
**MANAGEMENT**

020 7482 1555

[www.carolhayesmanagement.co.uk](http://www.carolhayesmanagement.co.uk)



## Tanner Street SE1

Recently refurbished large industrial/warehouse space. An ideal location for a music video or longer haul shoot; private and creative events, filming and photography, exhibitions, workshops and conferences. Catering packages available for corporate events. Floors and rooms can be hired out separately. Originally a Victorian tannery, it retains many original features. Three stunning floors feature wooden beams and floorboards and exposed brick walls. The site also offers a walled yard, a rooftop with views of central London, and a sparse industrial concrete garage space. It is located just outside of the Congestion Charge zone, and has

**CAROL HAYES**  
**MANAGEMENT**

020 7482 1555

[www.carolhayesmanagement.co.uk](http://www.carolhayesmanagement.co.uk)



## Tanner Street SE1

Recently refurbished large industrial/warehouse space. An ideal location for a music video or longer haul shoot; for private and creative events, filming and photography, exhibitions, workshops and conferences. Catering packages available for corporate events. Floors and rooms can be hired out separately. Originally a Victorian tannery, it retains many original features. Three stunning floors feature wooden beams and floorboards and exposed brick walls. The site also offers a walled yard, a rooftop with views of central London, and a sparse industrial concrete garage space. It is located just outside of the Congestion Charge zone, and has

**CAROLHAYES  
MANAGEMENT**

020 7482 1555

[www.carolhayesmanagement.co.uk](http://www.carolhayesmanagement.co.uk)



## Tanner Street SE1

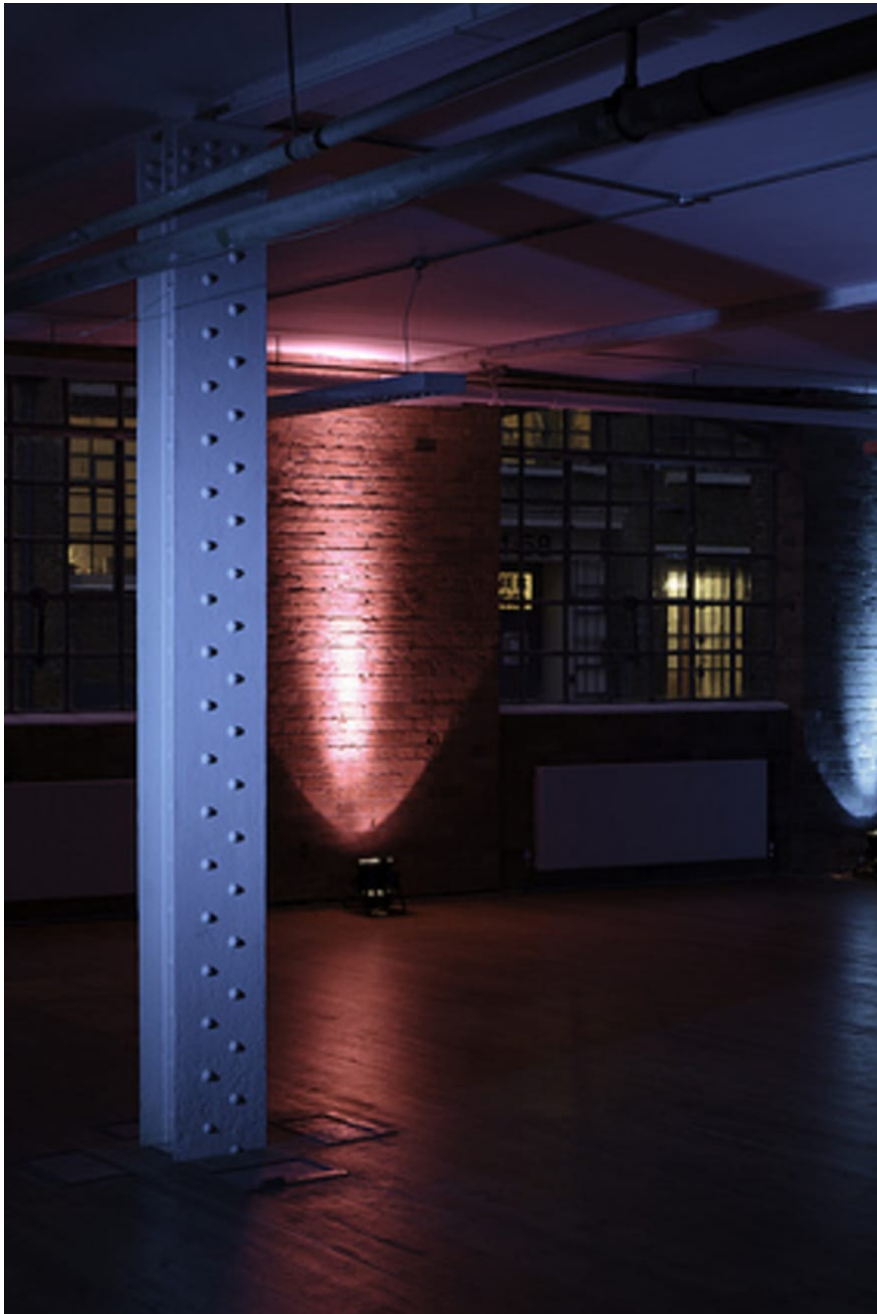
Recently refurbished large industrial/warehouse space. An ideal location for a music video or longer haul shoot; private and creative events, filming and photography, exhibitions, workshops and conferences. Catering packages available for corporate events. Floors and rooms can be hired out separately. Originally a Victorian tannery, it retains many original features. Three stunning floors feature wooden beams and floorboards and exposed brick walls. The site also offers a walled yard, a rooftop with views of central London, and a sparse industrial concrete garage space. It is located just outside of the Congestion Charge zone, and has

**CAROLHAYES**  
**MANAGEMENT**

020 7482 1555

[www.carolhayesmanagement.co.uk](http://www.carolhayesmanagement.co.uk)





## Tanner Street SE1

Recently refurbished large industrial/warehouse space. An ideal location for a music video or longer haul shoot; or private and creative events, filming and photography, exhibitions, workshops and conferences. Catering packages available for corporate events. Floors and rooms can be hired out separately. Originally a Victorian tannery, it retains many original features. Three stunning floors feature wooden beams and floorboards and exposed brick walls. The site also offers a walled yard, a rooftop with views of central London, and a sparse industrial concrete garage space. It is located just outside of the Congestion Charge zone, and has

**CAROLHAYES  
MANAGEMENT**

020 7482 1555

[www.carolhayesmanagement.co.uk](http://www.carolhayesmanagement.co.uk)



## Tanner Street SE1

Recently refurbished large industrial/warehouse space. An ideal location for a music video or longer haul shoot; for private and creative events, filming and photography, exhibitions, workshops and conferences. Catering packages available for corporate events. Floors and rooms can be hired out separately. Originally a Victorian tannery, it retains many original features. Three stunning floors feature wooden beams and floorboards and exposed brick walls. The site also offers a walled yard, a rooftop with views of central London, and a sparse industrial concrete garage space. It is located just outside of the Congestion Charge zone, and has

**CAROLHAYES  
MANAGEMENT**

020 7482 1555

[www.carolhayesmanagement.co.uk](http://www.carolhayesmanagement.co.uk)



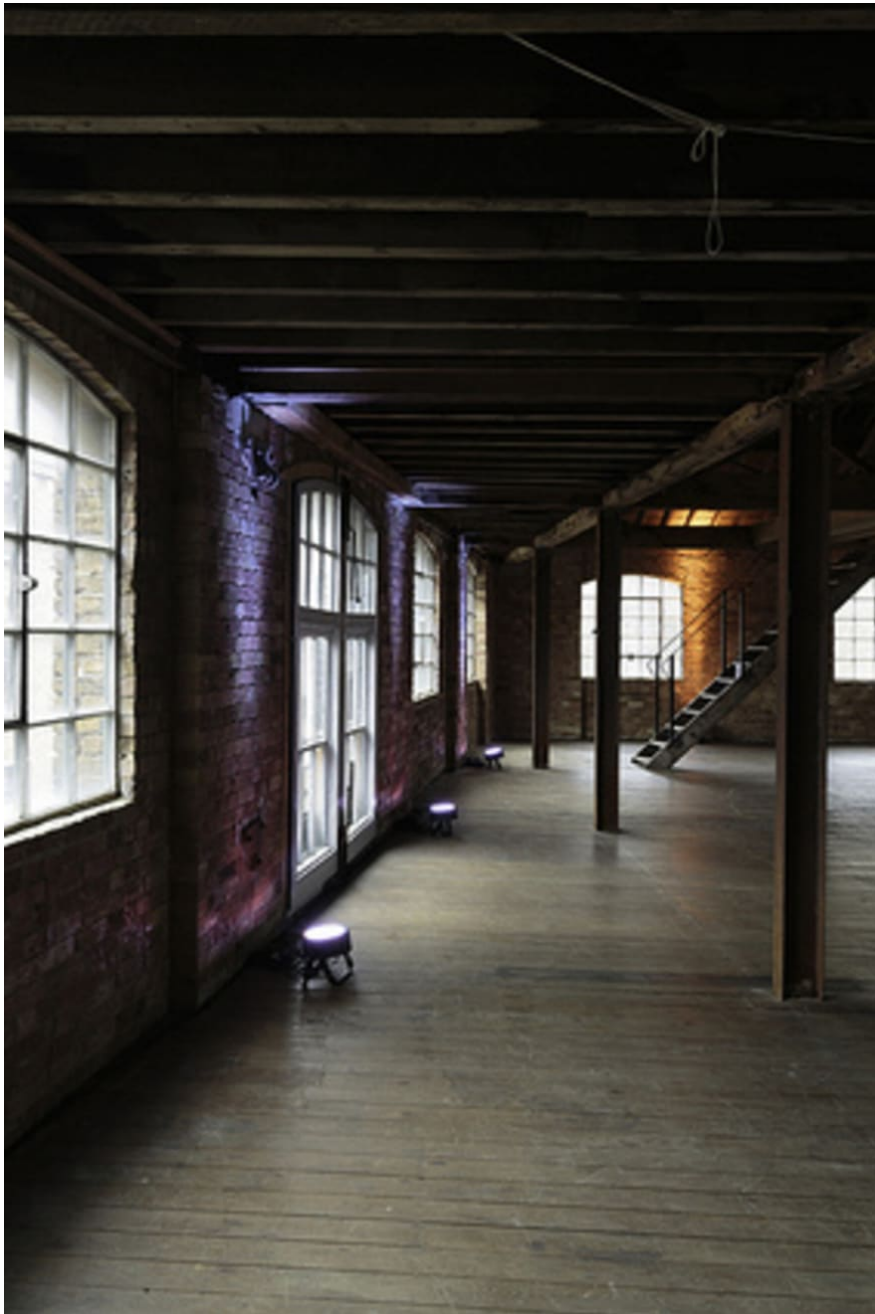
## Tanner Street SE1

Recently refurbished large industrial/warehouse space. An ideal location for a music video or longer haul shoot; for private and creative events, filming and photography, exhibitions, workshops and conferences. Catering packages available for corporate events. Floors and rooms can be hired out separately. Originally a Victorian tannery, it retains many original features. Three stunning floors feature wooden beams and floorboards and exposed brick walls. The site also offers a walled yard, a rooftop with views of central London, and a sparse industrial concrete garage space. It is located just outside of the Congestion Charge zone, and has

**CAROLHAYES  
MANAGEMENT**

020 7482 1555

[www.carolhayesmanagement.co.uk](http://www.carolhayesmanagement.co.uk)



## Tanner Street SE1

Recently refurbished large industrial/warehouse space. An ideal location for a music video or longer haul shoot; for private and creative events, filming and photography, exhibitions, workshops and conferences. Catering packages available for corporate events. Floors and rooms can be hired out separately. Originally a Victorian tannery, it retains many original features. Three stunning floors feature wooden beams and floorboards and exposed brick walls. The site also offers a walled yard, a rooftop with views of central London, and a sparse industrial concrete garage space. It is located just outside of the Congestion Charge zone, and has

**CAROLHAYES**  
**MANAGEMENT**

020 7482 1555

[www.carolhayesmanagement.co.uk](http://www.carolhayesmanagement.co.uk)



## Tanner Street SE1

Recently refurbished large industrial/warehouse space. An ideal location for a music video or longer haul shoot; corporate and creative events, filming and photography, exhibitions, workshops and conferences. Catering packages available for corporate events. Floors and rooms can be hired out separately. Originally a Victorian tannery, it retains many original features. Three stunning floors feature wooden beams and floorboards and exposed brick walls. The site also offers a walled yard, a rooftop with views of central London, and a sparse industrial concrete garage space. It is located just outside of the Congestion Charge zone, and has

**CAROLHAYES**  
**MANAGEMENT**

020 7482 1555

[www.carolhayesmanagement.co.uk](http://www.carolhayesmanagement.co.uk)



## Tanner Street SE1

Recently refurbished large industrial/warehouse space. An ideal location for a music video or longer haul shoot; or private and creative events, filming and photography, exhibitions, workshops and conferences. Catering packages available for corporate events. Floors and rooms can be hired out separately. Originally a Victorian tannery, it retains many original features. Three stunning floors feature wooden beams and floorboards and exposed brick walls. The site also offers a walled yard, a rooftop with views of central London, and a sparse industrial concrete garage space. It is located just outside of the Congestion Charge zone, and has

**CAROLHAYES  
MANAGEMENT**

020 7482 1555

[www.carolhayesmanagement.co.uk](http://www.carolhayesmanagement.co.uk)



## Tanner Street SE1

Recently refurbished large industrial/warehouse space. An ideal location for a music video or longer haul shoot; corporate and creative events, filming and photography, exhibitions, workshops and conferences. Catering packages available for corporate events. Floors and rooms can be hired out separately. Originally a Victorian tannery, it retains many original features. Three stunning floors feature wooden beams and floorboards and exposed brick walls. The site also offers a walled yard, a rooftop with views of central London, and a sparse industrial concrete garage space. It is located just outside of the Congestion Charge zone, and has

**CAROLHAYES  
MANAGEMENT**

020 7482 1555

[www.carolhayesmanagement.co.uk](http://www.carolhayesmanagement.co.uk)



## Tanner Street SE1

Recently refurbished large industrial/warehouse space. An ideal location for a music video or longer haul shoot; private and creative events, filming and photography, exhibitions, workshops and conferences. Catering packages available for corporate events. Floors and rooms can be hired out separately. Originally a Victorian tannery, it retains many original features. Three stunning floors feature wooden beams and floorboards and exposed brick walls. The site also offers a walled yard, a rooftop with views of central London, and a sparse industrial concrete garage space. It is located just outside of the Congestion Charge zone, and has

**CAROLHAYES  
MANAGEMENT**

020 7482 1555

[www.carolhayesmanagement.co.uk](http://www.carolhayesmanagement.co.uk)





## Tanner Street SE1

Recently refurbished large industrial/warehouse space. An ideal location for a music video or longer haul shoot; for private and creative events, filming and photography, exhibitions, workshops and conferences. Catering packages available for corporate events. Floors and rooms can be hired out separately. Originally a Victorian tannery, it retains many original features. Three stunning floors feature wooden beams and floorboards and exposed brick walls. The site also offers a walled yard, a rooftop with views of central London, and a sparse industrial concrete garage space. It is located just outside of the Congestion Charge zone, and has

**CAROLHAYES  
MANAGEMENT**

020 7482 1555

[www.carolhayesmanagement.co.uk](http://www.carolhayesmanagement.co.uk)



## Tanner Street SE1

Recently refurbished large industrial/warehouse space. An ideal location for a music video or longer haul shoot; or private and creative events, filming and photography, exhibitions, workshops and conferences. Catering packages available for corporate events. Floors and rooms can be hired out separately. Originally a Victorian tannery, it retains many original features. Three stunning floors feature wooden beams and floorboards and exposed brick walls. The site also offers a walled yard, a rooftop with views of central London, and a sparse industrial concrete garage space. It is located just outside of the Congestion Charge zone, and has

**CAROLHAYES  
MANAGEMENT**

020 7482 1555

[www.carolhayesmanagement.co.uk](http://www.carolhayesmanagement.co.uk)



## Tanner Street SE1

Recently refurbished large industrial/warehouse space. An ideal location for a music video or longer haul shoot; private and creative events, filming and photography, exhibitions, workshops and conferences. Catering packages available for corporate events. Floors and rooms can be hired out separately. Originally a Victorian tannery, it retains many original features. Three stunning floors feature wooden beams and floorboards and exposed brick walls. The site also offers a walled yard, a rooftop with views of central London, and a sparse industrial concrete garage space. It is located just outside of the Congestion Charge zone, and has

**CAROL HAYES**  
MANAGEMENT

020 7482 1555

[www.carolhayesmanagement.co.uk](http://www.carolhayesmanagement.co.uk)



## Tanner Street SE1

Recently refurbished large industrial/warehouse space. An ideal location for a music video or longer haul shoot; private and creative events, filming and photography, exhibitions, workshops and conferences. Catering packages available for corporate events. Floors and rooms can be hired out separately. Originally a Victorian tannery, it retains many original features. Three stunning floors feature wooden beams and floorboards and exposed brick walls. The site also offers a walled yard, a rooftop with views of central London, and a sparse industrial concrete garage space. It is located just outside of the Congestion Charge zone, and has

**CAROLHAYES  
MANAGEMENT**

020 7482 1555

[www.carolhayesmanagement.co.uk](http://www.carolhayesmanagement.co.uk)



## Tanner Street SE1

Recently refurbished large industrial/warehouse space. An ideal location for a music video or longer haul shoot; for private and creative events, filming and photography, exhibitions, workshops and conferences. Catering packages available for corporate events. Floors and rooms can be hired out separately. Originally a Victorian tannery, it retains many original features. Three stunning floors feature wooden beams and floorboards and exposed brick walls. The site also offers a walled yard, a rooftop with views of central London, and a sparse industrial concrete garage space. It is located just outside of the Congestion Charge zone, and has

**CAROLHAYES  
MANAGEMENT**

020 7482 1555

[www.carolhayesmanagement.co.uk](http://www.carolhayesmanagement.co.uk)



## Tanner Street SE1

Recently refurbished large industrial/warehouse space. An ideal location for a music video or longer haul shoot; or private and creative events, filming and photography, exhibitions, workshops and conferences. Catering packages available for corporate events. Floors and rooms can be hired out separately. Originally a Victorian tannery, it retains many original features. Three stunning floors feature wooden beams and floorboards and exposed brick walls. The site also offers a walled yard, a rooftop with views of central London, and a sparse industrial concrete garage space. It is located just outside of the Congestion Charge zone, and has

**CAROLHAYES**  
**MANAGEMENT**

020 7482 1555

[www.carolhayesmanagement.co.uk](http://www.carolhayesmanagement.co.uk)



## Tanner Street SE1

Recently refurbished large industrial/warehouse space. An ideal location for a music video or longer haul shoot; or private and creative events, filming and photography, exhibitions, workshops and conferences. Catering packages available for corporate events. Floors and rooms can be hired out separately. Originally a Victorian tannery, it retains many original features. Three stunning floors feature wooden beams and floorboards and exposed brick walls. The site also offers a walled yard, a rooftop with views of central London, and a sparse industrial concrete garage space. It is located just outside of the Congestion Charge zone, and has

**CAROLHAYES  
MANAGEMENT**

020 7482 1555

[www.carolhayesmanagement.co.uk](http://www.carolhayesmanagement.co.uk)



## Tanner Street SE1

Recently refurbished large industrial/warehouse space. An ideal location for a music video or longer haul shoot; or private and creative events, filming and photography, exhibitions, workshops and conferences. Catering packages available for corporate events. Floors and rooms can be hired out separately. Originally a Victorian tannery, it retains many original features. Three stunning floors feature wooden beams and floorboards and exposed brick walls. The site also offers a walled yard, a rooftop with views of central London, and a sparse industrial concrete garage space. It is located just outside of the Congestion Charge zone, and has

**CAROLHAYES**  
**MANAGEMENT**

020 7482 1555

[www.carolhayesmanagement.co.uk](http://www.carolhayesmanagement.co.uk)





## Tanner Street SE1

Recently refurbished large industrial/warehouse space. An ideal location for a music video or longer haul shoot; private and creative events, filming and photography, exhibitions, workshops and conferences. Catering packages available for corporate events. Floors and rooms can be hired out separately. Originally a Victorian tannery, it retains many original features. Three stunning floors feature wooden beams and floorboards and exposed brick walls. The site also offers a walled yard, a rooftop with views of central London, and a sparse industrial concrete garage space. It is located just outside of the Congestion Charge zone, and has

**CAROLHAYES  
MANAGEMENT**

020 7482 1555

[www.carolhayesmanagement.co.uk](http://www.carolhayesmanagement.co.uk)



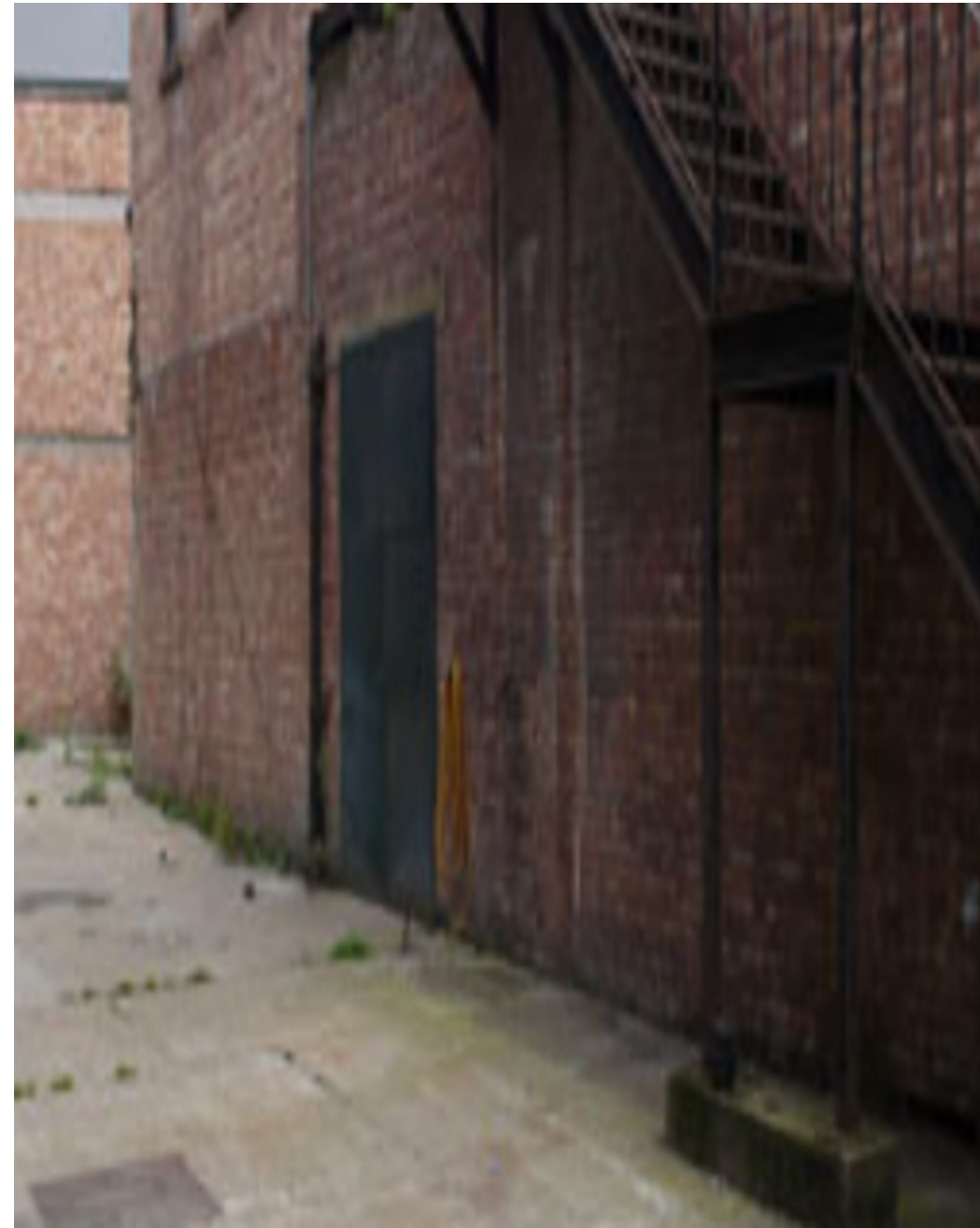
## Tanner Street SE1

Recently refurbished large industrial/warehouse space. An ideal location for a music video or longer haul shoot; private and creative events, filming and photography, exhibitions, workshops and conferences. Catering packages available for corporate events. Floors and rooms can be hired out separately. Originally a Victorian tannery, it retains many original features. Three stunning floors feature wooden beams and floorboards and exposed brick walls. The site also offers a walled yard, a rooftop with views of central London, and a sparse industrial concrete garage space. It is located just outside of the Congestion Charge zone, and has

**CAROLHAYES**  
**MANAGEMENT**

020 7482 1555

[www.carolhayesmanagement.co.uk](http://www.carolhayesmanagement.co.uk)



## Tanner Street SE1

Recently refurbished large industrial/warehouse space. An ideal location for a music video or longer haul shoot; corporate and creative events, filming and photography, exhibitions, workshops and conferences. Catering packages available for corporate events. Floors and rooms can be hired out separately. Originally a Victorian tannery, it retains many original features. Three stunning floors feature wooden beams and floorboards and exposed brick walls. The site also offers a walled yard, a rooftop with views of central London, and a sparse industrial concrete garage space. It is located just outside of the Congestion Charge zone, and has

**CAROL HAYES  
MANAGEMENT**

020 7482 1555

[www.carolhayesmanagement.co.uk](http://www.carolhayesmanagement.co.uk)



## Tanner Street SE1

Recently refurbished large industrial/warehouse space. An ideal location for a music video or longer haul shoot; private and creative events, filming and photography, exhibitions, workshops and conferences. Catering packages available for corporate events. Floors and rooms can be hired out separately. Originally a Victorian tannery, it retains many original features. Three stunning floors feature wooden beams and floorboards and exposed brick walls. The site also offers a walled yard, a rooftop with views of central London, and a sparse industrial concrete garage space. It is located just outside of the Congestion Charge zone, and has

**CAROLHAYES**  
**MANAGEMENT**

020 7482 1555

[www.carolhayesmanagement.co.uk](http://www.carolhayesmanagement.co.uk)



## Tanner Street SE1

Recently refurbished large industrial/warehouse space. An ideal location for a music video or longer haul shoot; private and creative events, filming and photography, exhibitions, workshops and conferences. Catering packages available for corporate events. Floors and rooms can be hired out separately. Originally a Victorian tannery, it retains many original features. Three stunning floors feature wooden beams and floorboards and exposed brick walls. The site also offers a walled yard, a rooftop with views of central London, and a sparse industrial concrete garage space. It is located just outside of the Congestion Charge zone, and has

**CAROLHAYES**  
**MANAGEMENT**

020 7482 1555

[www.carolhayesmanagement.co.uk](http://www.carolhayesmanagement.co.uk)



## Tanner Street SE1

Recently refurbished large industrial/warehouse space. An ideal location for a music video or longer haul shoot; private and creative events, filming and photography, exhibitions, workshops and conferences. Catering packages available for corporate events. Floors and rooms can be hired out separately. Originally a Victorian tannery, it retains many original features. Three stunning floors feature wooden beams and floorboards and exposed brick walls. The site also offers a walled yard, a rooftop with views of central London, and a sparse industrial concrete garage space. It is located just outside of the Congestion Charge zone, and has

**CAROLHAYES  
MANAGEMENT**

020 7482 1555

[www.carolhayesmanagement.co.uk](http://www.carolhayesmanagement.co.uk)



## Tanner Street SE1

Recently refurbished large industrial/warehouse space. An ideal location for a music video or longer haul shoot; private and creative events, filming and photography, exhibitions, workshops and conferences. Catering packages available for corporate events. Floors and rooms can be hired out separately. Originally a Victorian tannery, it retains many original features. Three stunning floors feature wooden beams and floorboards and exposed brick walls. The site also offers a walled yard, a rooftop with views of central London, and a sparse industrial concrete garage space. It is located just outside of the Congestion Charge zone, and has

**CAROLHAYES  
MANAGEMENT**

020 7482 1555

[www.carolhayesmanagement.co.uk](http://www.carolhayesmanagement.co.uk)



## Tanner Street SE1

Recently refurbished large industrial/warehouse space. An ideal location for a music video or longer haul shoot; or private and creative events, filming and photography, exhibitions, workshops and conferences. Catering packages available for corporate events. Floors and rooms can be hired out separately. Originally a Victorian tannery, it retains many original features. Three stunning floors feature wooden beams and floorboards and exposed brick walls. The site also offers a walled yard, a rooftop with views of central London, and a sparse industrial concrete garage space. It is located just outside of the Congestion Charge zone, and has

**CAROLHAYES**  
**MANAGEMENT**

020 7482 1555

[www.carolhayesmanagement.co.uk](http://www.carolhayesmanagement.co.uk)





## Tanner Street SE1

Recently refurbished large industrial/warehouse space. An ideal location for a music video or longer haul shoot; private and creative events, filming and photography, exhibitions, workshops and conferences. Catering packages available for corporate events. Floors and rooms can be hired out separately. Originally a Victorian tannery, it retains many original features. Three stunning floors feature wooden beams and floorboards and exposed brick walls. The site also offers a walled yard, a rooftop with views of central London, and a sparse industrial concrete garage space. It is located just outside of the Congestion Charge zone, and has

**CAROLHAYES**  
**MANAGEMENT**

020 7482 1555

[www.carolhayesmanagement.co.uk](http://www.carolhayesmanagement.co.uk)



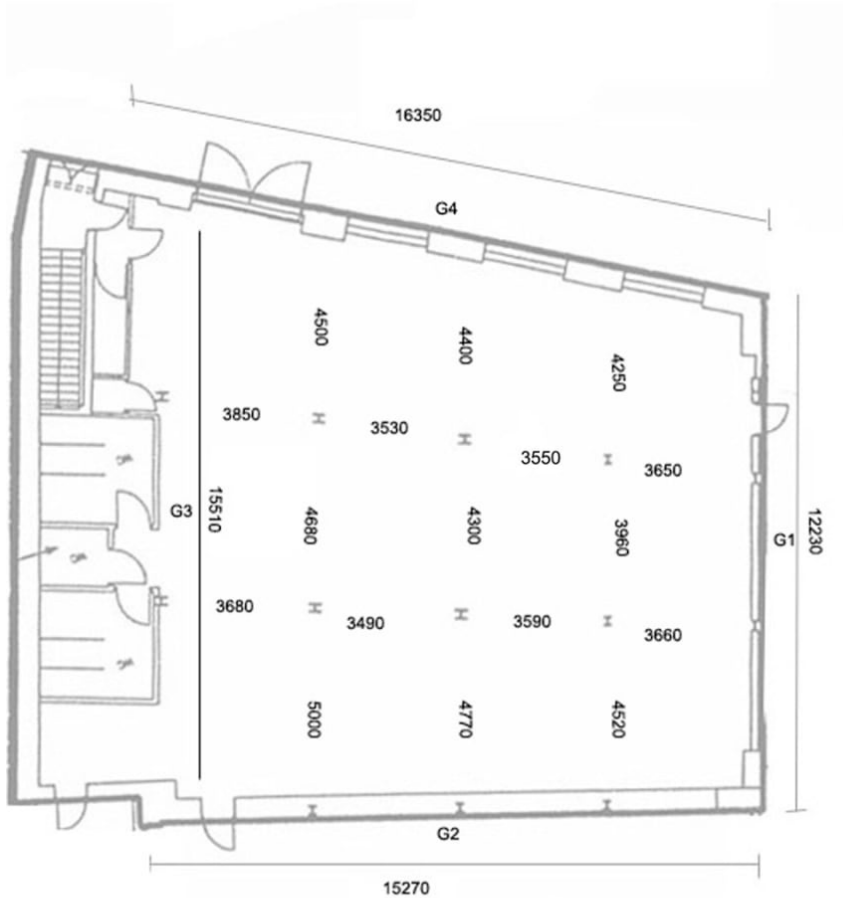
## Tanner Street SE1

Recently refurbished large industrial/warehouse space. An ideal location for a music video or longer haul shoot; or private and creative events, filming and photography, exhibitions, workshops and conferences. Catering packages available for corporate events. Floors and rooms can be hired out separately. Originally a Victorian tannery, it retains many original features. Three stunning floors feature wooden beams and floorboards and exposed brick walls. The site also offers a walled yard, a rooftop with views of central London, and a sparse industrial concrete garage space. It is located just outside of the Congestion Charge zone, and has

**CAROLHAYES**  
**MANAGEMENT**

020 7482 1555

[www.carolhayesmanagement.co.uk](http://www.carolhayesmanagement.co.uk)



racy of the measurements contained here no responsibility is taken for any error or omission.

## Tanner Street SE1

Recently refurbished large industrial/warehouse space. An ideal location for a music video or longer haul shoot; corporate and creative events, filming and photography, exhibitions, workshops and conferences. Catering packages available for corporate events. Floors and rooms can be hired out separately. Originally a Victorian tannery, it retains many original features. Three stunning floors feature wooden beams and floorboards and exposed brick walls. The site also offers a walled yard, a rooftop with views of central London, and a sparse industrial concrete garage space. It is located just outside of the Congestion Charge zone, and has

**CAROL HAYES**  
MANAGEMENT

020 7482 1555

[www.carolhayesmanagement.co.uk](http://www.carolhayesmanagement.co.uk)



racy of the measurements contained here no responsibility is taken for any error or omission.

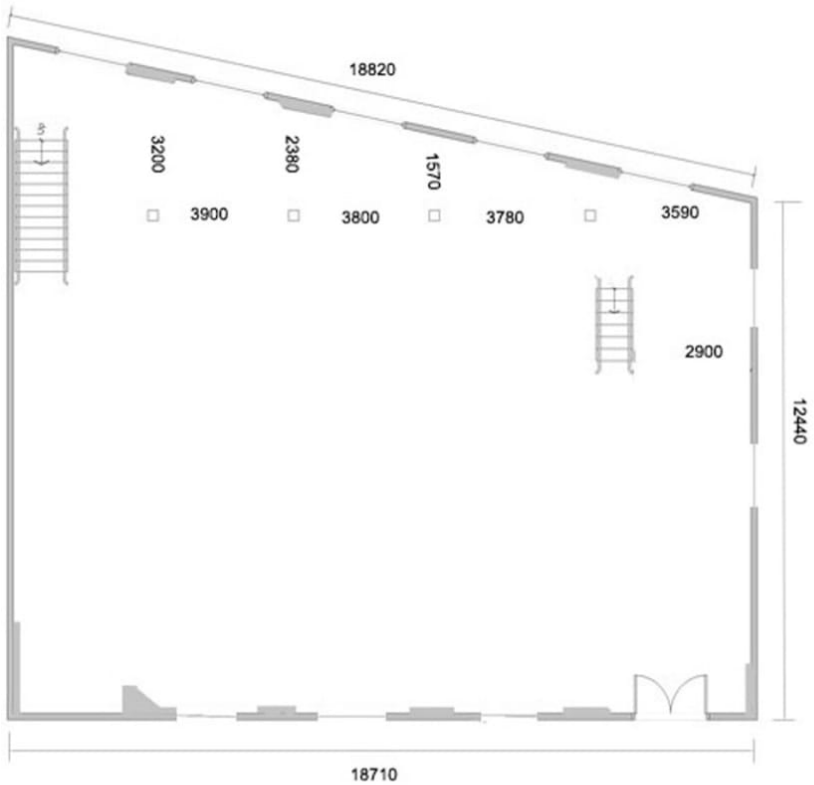
## Tanner Street SE1

Recently refurbished large industrial/warehouse space. An ideal location for a music video or longer haul shoot; corporate and creative events, filming and photography, exhibitions, workshops and conferences. Catering packages available for corporate events. Floors and rooms can be hired out separately. Originally a Victorian tannery, it retains many original features. Three stunning floors feature wooden beams and floorboards and exposed brick walls. The site also offers a walled yard, a rooftop with views of central London, and a sparse industrial concrete garage space. It is located just outside of the Congestion Charge zone, and has

**CAROL HAYES**  
MANAGEMENT

020 7482 1555

[www.carolhayesmanagement.co.uk](http://www.carolhayesmanagement.co.uk)



racy of the measurements contained here no responsibility is taken for any error or omission.

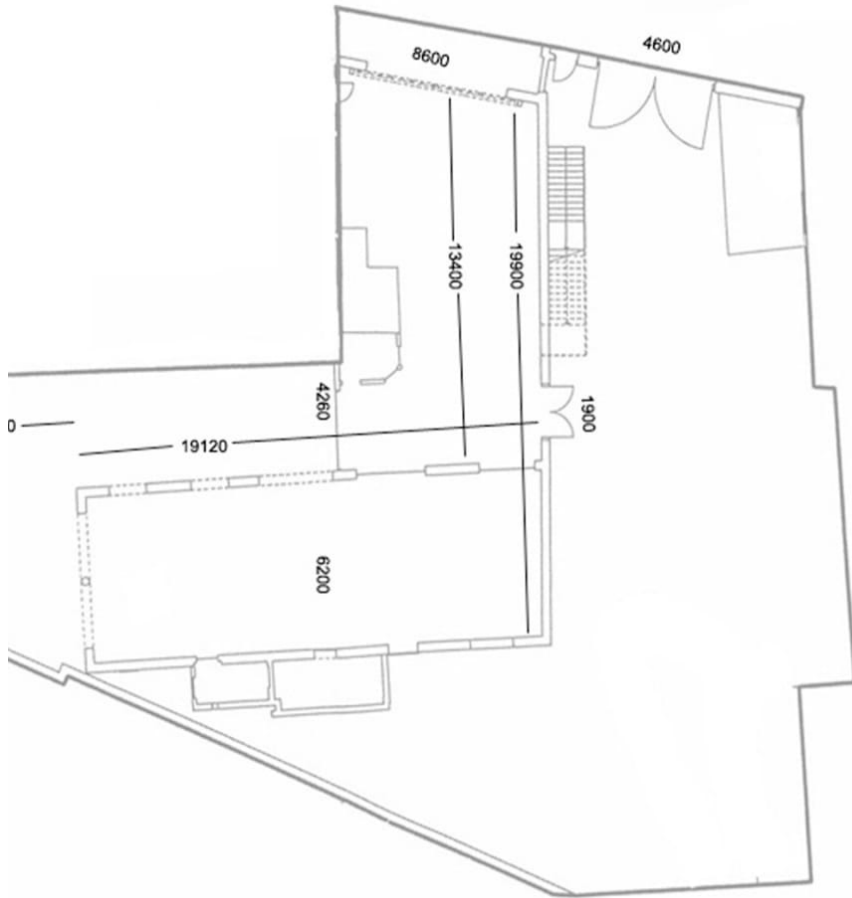
## Tanner Street SE1

Recently refurbished large industrial/warehouse space. An ideal location for a music video or longer haul shoot; private and creative events, filming and photography, exhibitions, workshops and conferences. Catering packages available for corporate events. Floors and rooms can be hired out separately. Originally a Victorian tannery, it retains many original features. Three stunning floors feature wooden beams and floorboards and exposed brick walls. The site also offers a walled yard, a rooftop with views of central London, and a sparse industrial concrete garage space. It is located just outside of the Congestion Charge zone, and has

**CAROL HAYES**  
MANAGEMENT

020 7482 1555

[www.carolhayesmanagement.co.uk](http://www.carolhayesmanagement.co.uk)



racy of the measurements contained here no responsibility is taken for any error or omission.

## Tanner Street SE1

Recently refurbished large industrial/warehouse space. An ideal location for a music video or longer haul shoot; private and creative events, filming and photography, exhibitions, workshops and conferences. Catering packages available for corporate events. Floors and rooms can be hired out separately. Originally a Victorian tannery, it retains many original features. Three stunning floors feature wooden beams and floorboards and exposed brick walls. The site also offers a walled yard, a rooftop with views of central London, and a sparse industrial concrete garage space. It is located just outside of the Congestion Charge zone, and has

**CAROLHAYES**  
MANAGEMENT

020 7482 1555

[www.carolhayesmanagement.co.uk](http://www.carolhayesmanagement.co.uk)