

# Stunning Somerset Estate - TA5

A substantial country manor house set in large gardens and grounds with medieval carp lakes and planning consents, situated at the foothills of the Quantock Hills, England's first designated Area of Outstanding Natural Beauty. Approached through large pillars and an attractive 15th Century stone archway with wonderful wrought iron gates, the driveway leads to a turning oval, parking area and the property's truly magnificent façade. The house boasts a grand reception hall, three graceful and elegant reception rooms, a large office/study, a fully fitted hand painted kitchen/breakfast room with an Aga, a laundry room, seven beautiful bedrooms - five en-suite and a generous family bathroom. There is also an adjoining three-bedroom maisonette, which could easily be incorporated back into the main house, as well as a useful loft space above the double garage, as well as its extensive accommodation and large grounds, featuring three medieval Carp lakes, a paddock, a beautiful Grade II Listed early 17th Century brick built Gazebo





## Stunning Somerset Estate - TA5

A substantial country manor house set in large gardens and grounds with medieval carpales and planning consents, situated at the foothills of the Quantock Hills, England's first designated Area of Outstanding Natural Beauty. Approached through large pillars and an attractive 15th Century stone archway with wonderful wrought iron gates, the driveway leads to a turning oval, parking area and the property's truly magnificent façade. The house boasts a grand reception hall, three graceful and elegant reception rooms, a large office/study, a fully fitted hand painted kitchen/breakfast room with an Aga, a laundry room, seven beautiful bedrooms -

**CAROL HAYES**  
**MANAGEMENT**

020 7482 1555

[www.carolhayesmanagement.co.uk](http://www.carolhayesmanagement.co.uk)





## Stunning Somerset Estate - TA5

A substantial country manor house set in large gardens and grounds with medieval carpenter's and plainer's cottages, situated at the foothills of the Quantock Hills, England's first designated Area of Outstanding Natural Beauty. Approached through large pillars and an attractive 15th Century stone archway with wonderful wrought iron gates, the driveway leads to a turning oval, parking area and the property's truly magnificent façade. The house boasts a grand reception hall, three graceful and elegant reception rooms, a large office/study, a fully fitted hand painted kitchen/breakfast room with an Aga, a laundry room, seven beautiful bedrooms -

**CAROL HAYES**  
**MANAGEMENT**

020 7482 1555

[www.carolhayesmanagement.co.uk](http://www.carolhayesmanagement.co.uk)



## Stunning Somerset Estate - TA5

A substantial country manor house set in large gardens and grounds with medieval carpenter's and plainer's work, situated at the foothills of the Quantock Hills, England's first designated Area of Outstanding Natural Beauty. Approached through large pillars and an attractive 15th Century stone archway with wonderful wrought iron gates, the driveway leads to a turning oval, parking area and the property's truly magnificent façade. The house boasts a grand reception hall, three graceful and elegant reception rooms, a large office/study, a fully fitted hand painted kitchen/breakfast room with an Aga, a laundry room, seven beautiful bedrooms -

**CAROL HAYES**  
**MANAGEMENT**

020 7482 1555

[www.carolhayesmanagement.co.uk](http://www.carolhayesmanagement.co.uk)





## Stunning Somerset Estate - TA5

A substantial country manor house set in large gardens and grounds with medieval carp timbers and planning consents, situated at the foothills of the Quantock Hills, England's first designated Area of Outstanding Natural Beauty. Approached through large pillars and an attractive 15th Century stone archway with wonderful wrought iron gates, the driveway leads to a turning oval, parking area and the property's truly magnificent façade. The house boasts a grand reception hall, three graceful and elegant reception rooms, a large office/study, a fully fitted hand painted kitchen/breakfast room with an Aga, a laundry room, seven beautiful bedrooms -

**CAROL HAYES**  
MANAGEMENT

020 7482 1555

[www.carolhayesmanagement.co.uk](http://www.carolhayesmanagement.co.uk)



## Stunning Somerset Estate - TA5

A substantial country manor house set in large gardens and grounds with medieval carpenter's and plainer's cottages, situated at the foothills of the Quantock Hills, England's first designated Area of Outstanding Natural Beauty. Approached through large pillars and an attractive 15th Century stone archway with wonderful wrought iron gates, the driveway leads to a turning oval, parking area and the property's truly magnificent façade. The house boasts a grand reception hall, three graceful and elegant reception rooms, a large office/study, a fully fitted hand painted kitchen/breakfast room with an Aga, a laundry room, seven beautiful bedrooms -

**CAROLHAYES**  
**MANAGEMENT**

020 7482 1555

[www.carolhayesmanagement.co.uk](http://www.carolhayesmanagement.co.uk)





## Stunning Somerset Estate - TA5

A substantial country manor house set in large gardens and grounds with medieval carp timbers and planning consent, situated at the foothills of the Quantock Hills, England's first designated Area of Outstanding Natural Beauty. Approached through large pillars and an attractive 15th Century stone archway with wonderful wrought iron gates, the driveway leads to a turning oval, parking area and the property's truly magnificent façade. The house boasts a grand reception hall, three graceful and elegant reception rooms, a large office/study, a fully fitted hand painted kitchen/breakfast room with an Aga, a laundry room, seven beautiful bedrooms -

**CAROLHAYES**  
**MANAGEMENT**

020 7482 1555

[www.carolhayesmanagement.co.uk](http://www.carolhayesmanagement.co.uk)





## Stunning Somerset Estate - TA5

A substantial country manor house set in large gardens and grounds with medieval carpavels and planning consents, situated at the foothills of the Quantock Hills, England's first designated Area of Outstanding Natural Beauty. Approached through large pillars and an attractive 15th Century stone archway with wonderful wrought iron gates, the driveway leads to a turning oval, parking area and the property's truly magnificent façade. The house boasts a grand reception hall, three graceful and elegant reception rooms, a large office/study, a fully fitted hand painted kitchen/breakfast room with an Aga, a laundry room, seven beautiful bedrooms -

**CAROLHAYES**  
**MANAGEMENT**

020 7482 1555

[www.carolhayesmanagement.co.uk](http://www.carolhayesmanagement.co.uk)





## Stunning Somerset Estate - TA5

A substantial country manor house set in large gardens and grounds with medieval carpenter's and plainer's cottages, situated at the foothills of the Quantock Hills, England's first designated Area of Outstanding Natural Beauty. Approached through large pillars and an attractive 15th Century stone archway with wonderful wrought iron gates, the driveway leads to a turning oval, parking area and the property's truly magnificent façade. The house boasts a grand reception hall, three graceful and elegant reception rooms, a large office/study, a fully fitted hand painted kitchen/breakfast room with an Aga, a laundry room, seven beautiful bedrooms -

**CAROL HAYES**  
MANAGEMENT

020 7482 1555

[www.carolhayesmanagement.co.uk](http://www.carolhayesmanagement.co.uk)



## Stunning Somerset Estate - TA5

A substantial country manor house set in large gardens and grounds with medieval carpenter and planning consents, situated at the foothills of the Quantock Hills, England's first designated Area of Outstanding Natural Beauty. Approached through large pillars and an attractive 15th Century stone archway with wonderful wrought iron gates, the driveway leads to a turning oval, parking area and the property's truly magnificent façade. The house boasts a grand reception hall, three graceful and elegant reception rooms, a large office/study, a fully fitted hand painted kitchen/breakfast room with an Aga, a laundry room, seven beautiful bedrooms -

**CAROLHAYES**  
**MANAGEMENT**

020 7482 1555

[www.carolhayesmanagement.co.uk](http://www.carolhayesmanagement.co.uk)





## Stunning Somerset Estate - TA5

A substantial country manor house set in large gardens and grounds with medieval carp timbers and planning consents, situated at the foothills of the Quantock Hills, England's first designated Area of Outstanding Natural Beauty. Approached through large pillars and an attractive 15th Century stone archway with wonderful wrought iron gates, the driveway leads to a turning oval, parking area and the property's truly magnificent façade. The house boasts a grand reception hall, three graceful and elegant reception rooms, a large office/study, a fully fitted hand painted kitchen/breakfast room with an Aga, a laundry room, seven beautiful bedrooms -

**CAROLHAYES  
MANAGEMENT**

020 7482 1555

[www.carolhayesmanagement.co.uk](http://www.carolhayesmanagement.co.uk)





## Stunning Somerset Estate - TA5

A substantial country manor house set in large gardens and grounds with medieval carpenter's and planning consents, situated at the foothills of the Quantock Hills, England's first designated Area of Outstanding Natural Beauty. Approached through large pillars and an attractive 15th Century stone archway with wonderful wrought iron gates, the driveway leads to a turning oval, parking area and the property's truly magnificent façade. The house boasts a grand reception hall, three graceful and elegant reception rooms, a large office/study, a fully fitted hand painted kitchen/breakfast room with an Aga, a laundry room, seven beautiful bedrooms -

**CAROL HAYES**  
**MANAGEMENT**

020 7482 1555

[www.carolhayesmanagement.co.uk](http://www.carolhayesmanagement.co.uk)





## Stunning Somerset Estate - TA5

A substantial country manor house set in large gardens and grounds with medieval carpenter's and plainer's cottages, situated at the foothills of the Quantock Hills, England's first designated Area of Outstanding Natural Beauty. Approached through large pillars and an attractive 15th Century stone archway with wonderful wrought iron gates, the driveway leads to a turning oval, parking area and the property's truly magnificent façade. The house boasts a grand reception hall, three graceful and elegant reception rooms, a large office/study, a fully fitted hand painted kitchen/breakfast room with an Aga, a laundry room, seven beautiful bedrooms -

**CAROLHAYES**  
**MANAGEMENT**

020 7482 1555

[www.carolhayesmanagement.co.uk](http://www.carolhayesmanagement.co.uk)





## Stunning Somerset Estate - TA5

A substantial country manor house set in large gardens and grounds with medieval carpales and planning consents, situated at the foothills of the Quantock Hills, England's first designated Area of Outstanding Natural Beauty. Approached through large pillars and an attractive 15th Century stone archway with wonderful wrought iron gates, the driveway leads to a turning oval, parking area and the property's truly magnificent façade. The house boasts a grand reception hall, three graceful and elegant reception rooms, a large office/study, a fully fitted hand painted kitchen/breakfast room with an Aga, a laundry room, seven beautiful bedrooms -

**CAROL HAYES**  
**MANAGEMENT**

020 7482 1555

[www.carolhayesmanagement.co.uk](http://www.carolhayesmanagement.co.uk)





## Stunning Somerset Estate - TA5

A substantial country manor house set in large gardens and grounds with medieval carpenter's and planning consents, situated at the foothills of the Quantock Hills, England's first designated Area of Outstanding Natural Beauty. Approached through large pillars and an attractive 15th Century stone archway with wonderful wrought iron gates, the driveway leads to a turning oval, parking area and the property's truly magnificent façade. The house boasts a grand reception hall, three graceful and elegant reception rooms, a large office/study, a fully fitted hand painted kitchen/breakfast room with an Aga, a laundry room, seven beautiful bedrooms -

**CAROL HAYES**  
MANAGEMENT

020 7482 1555

[www.carolhayesmanagement.co.uk](http://www.carolhayesmanagement.co.uk)





## Stunning Somerset Estate - TA5

A substantial country manor house set in large gardens and grounds with medieval carpovales and planning consents, situated at the foothills of the Quantock Hills, England's first designated Area of Outstanding Natural Beauty. Approached through large pillars and an attractive 15th Century stone archway with wonderful wrought iron gates, the driveway leads to a turning oval, parking area and the property's truly magnificent façade. The house boasts a grand reception hall, three graceful and elegant reception rooms, a large office/study, a fully fitted hand painted kitchen/breakfast room with an Aga, a laundry room, seven beautiful bedrooms -

**CAROL HAYES**  
**MANAGEMENT**

020 7482 1555

[www.carolhayesmanagement.co.uk](http://www.carolhayesmanagement.co.uk)





## Stunning Somerset Estate - TA5

A substantial country manor house set in large gardens and grounds with medieval carpenter's and plainer's details, situated at the foothills of the Quantock Hills, England's first designated Area of Outstanding Natural Beauty. Approached through large pillars and an attractive 15th Century stone archway with wonderful wrought iron gates, the driveway leads to a turning oval, parking area and the property's truly magnificent façade. The house boasts a grand reception hall, three graceful and elegant reception rooms, a large office/study, a fully fitted hand painted kitchen/breakfast room with an Aga, a laundry room, seven beautiful bedrooms -

**CAROL HAYES**  
**MANAGEMENT**

020 7482 1555

[www.carolhayesmanagement.co.uk](http://www.carolhayesmanagement.co.uk)





## Stunning Somerset Estate - TA5

A substantial country manor house set in large gardens and grounds with medieval carp timbers and planning consents, situated at the foothills of the Quantock Hills, England's first designated Area of Outstanding Natural Beauty. Approached through large pillars and an attractive 15th Century stone archway with wonderful wrought iron gates, the driveway leads to a turning oval, parking area and the property's truly magnificent façade. The house boasts a grand reception hall, three graceful and elegant reception rooms, a large office/study, a fully fitted hand painted kitchen/breakfast room with an Aga, a laundry room, seven beautiful bedrooms -

**CAROL HAYES  
MANAGEMENT**

020 7482 1555

[www.carolhayesmanagement.co.uk](http://www.carolhayesmanagement.co.uk)





## Stunning Somerset Estate - TA5

A substantial country manor house set in large gardens and grounds with medieval carp timbers and planning consents, situated at the foothills of the Quantock Hills, England's first designated Area of Outstanding Natural Beauty. Approached through large pillars and an attractive 15th Century stone archway with wonderful wrought iron gates, the driveway leads to a turning oval, parking area and the property's truly magnificent façade. The house boasts a grand reception hall, three graceful and elegant reception rooms, a large office/study, a fully fitted hand painted kitchen/breakfast room with an Aga, a laundry room, seven beautiful bedrooms -

**CAROL HAYES**  
**MANAGEMENT**

020 7482 1555

[www.carolhayesmanagement.co.uk](http://www.carolhayesmanagement.co.uk)





## Stunning Somerset Estate - TA5

A substantial country manor house set in large gardens and grounds with medieval carpenter's and planning consents, situated at the foothills of the Quantock Hills, England's first designated Area of Outstanding Natural Beauty. Approached through large pillars and an attractive 15th Century stone archway with wonderful wrought iron gates, the driveway leads to a turning oval, parking area and the property's truly magnificent façade. The house boasts a grand reception hall, three graceful and elegant reception rooms, a large office/study, a fully fitted hand painted kitchen/breakfast room with an Aga, a laundry room, seven beautiful bedrooms -

**CAROLHAYES  
MANAGEMENT**

020 7482 1555

[www.carolhayesmanagement.co.uk](http://www.carolhayesmanagement.co.uk)





## Stunning Somerset Estate - TA5

A substantial country manor house set in large gardens and grounds with medieval carpenter's and planning consents, situated at the foothills of the Quantock Hills, England's first designated Area of Outstanding Natural Beauty. Approached through large pillars and an attractive 15th Century stone archway with wonderful wrought iron gates, the driveway leads to a turning oval, parking area and the property's truly magnificent façade. The house boasts a grand reception hall, three graceful and elegant reception rooms, a large office/study, a fully fitted hand painted kitchen/breakfast room with an Aga, a laundry room, seven beautiful bedrooms -

**CAROL HAYES**  
MANAGEMENT

020 7482 1555

[www.carolhayesmanagement.co.uk](http://www.carolhayesmanagement.co.uk)





## Stunning Somerset Estate - TA5

A substantial country manor house set in large gardens and grounds with medieval carp gables and planning consent, situated at the foothills of the Quantock Hills, England's first designated Area of Outstanding Natural Beauty. Approached through large pillars and an attractive 15th Century stone archway with wonderful wrought iron gates, the driveway leads to a turning oval, parking area and the property's truly magnificent façade. The house boasts a grand reception hall, three graceful and elegant reception rooms, a large office/study, a fully fitted hand painted kitchen/breakfast room with an Aga, a laundry room, seven beautiful bedrooms -

**CAROL HAYES**  
**MANAGEMENT**

020 7482 1555

[www.carolhayesmanagement.co.uk](http://www.carolhayesmanagement.co.uk)





## Stunning Somerset Estate - TA5

A substantial country manor house set in large gardens and grounds with medieval carpenter's and planning consents, situated at the foothills of the Quantock Hills, England's first designated Area of Outstanding Natural Beauty. Approached through large pillars and an attractive 15th Century stone archway with wonderful wrought iron gates, the driveway leads to a turning oval, parking area and the property's truly magnificent façade. The house boasts a grand reception hall, three graceful and elegant reception rooms, a large office/study, a fully fitted hand painted kitchen/breakfast room with an Aga, a laundry room, seven beautiful bedrooms -

**CAROL HAYES**  
**MANAGEMENT**

020 7482 1555

[www.carolhayesmanagement.co.uk](http://www.carolhayesmanagement.co.uk)





## Stunning Somerset Estate - TA5

A substantial country manor house set in large gardens and grounds with medieval carpenter's and planning consents, situated at the foothills of the Quantock Hills, England's first designated Area of Outstanding Natural Beauty. Approached through large pillars and an attractive 15th Century stone archway with wonderful wrought iron gates, the driveway leads to a turning oval, parking area and the property's truly magnificent façade. The house boasts a grand reception hall, three graceful and elegant reception rooms, a large office/study, a fully fitted hand painted kitchen/breakfast room with an Aga, a laundry room, seven beautiful bedrooms -

**CAROL HAYES**  
**MANAGEMENT**

020 7482 1555

[www.carolhayesmanagement.co.uk](http://www.carolhayesmanagement.co.uk)





## Stunning Somerset Estate - TA5

A substantial country manor house set in large gardens and grounds with medieval carpenter's and planning consents, situated at the foothills of the Quantock Hills, England's first designated Area of Outstanding Natural Beauty. Approached through large pillars and an attractive 15th Century stone archway with wonderful wrought iron gates, the driveway leads to a turning oval, parking area and the property's truly magnificent façade. The house boasts a grand reception hall, three graceful and elegant reception rooms, a large office/study, a fully fitted hand painted kitchen/breakfast room with an Aga, a laundry room, seven beautiful bedrooms -

**CAROL HAYES**  
**MANAGEMENT**

020 7482 1555

[www.carolhayesmanagement.co.uk](http://www.carolhayesmanagement.co.uk)





## Stunning Somerset Estate - TA5

A substantial country manor house set in large gardens and grounds with medieval carpenter's and planning consents, situated at the foothills of the Quantock Hills, England's first designated Area of Outstanding Natural Beauty. Approached through large pillars and an attractive 15th Century stone archway with wonderful wrought iron gates, the driveway leads to a turning oval, parking area and the property's truly magnificent façade. The house boasts a grand reception hall, three graceful and elegant reception rooms, a large office/study, a fully fitted hand painted kitchen/breakfast room with an Aga, a laundry room, seven beautiful bedrooms -

**CAROL HAYES**  
**MANAGEMENT**

020 7482 1555

[www.carolhayesmanagement.co.uk](http://www.carolhayesmanagement.co.uk)





## Stunning Somerset Estate - TA5

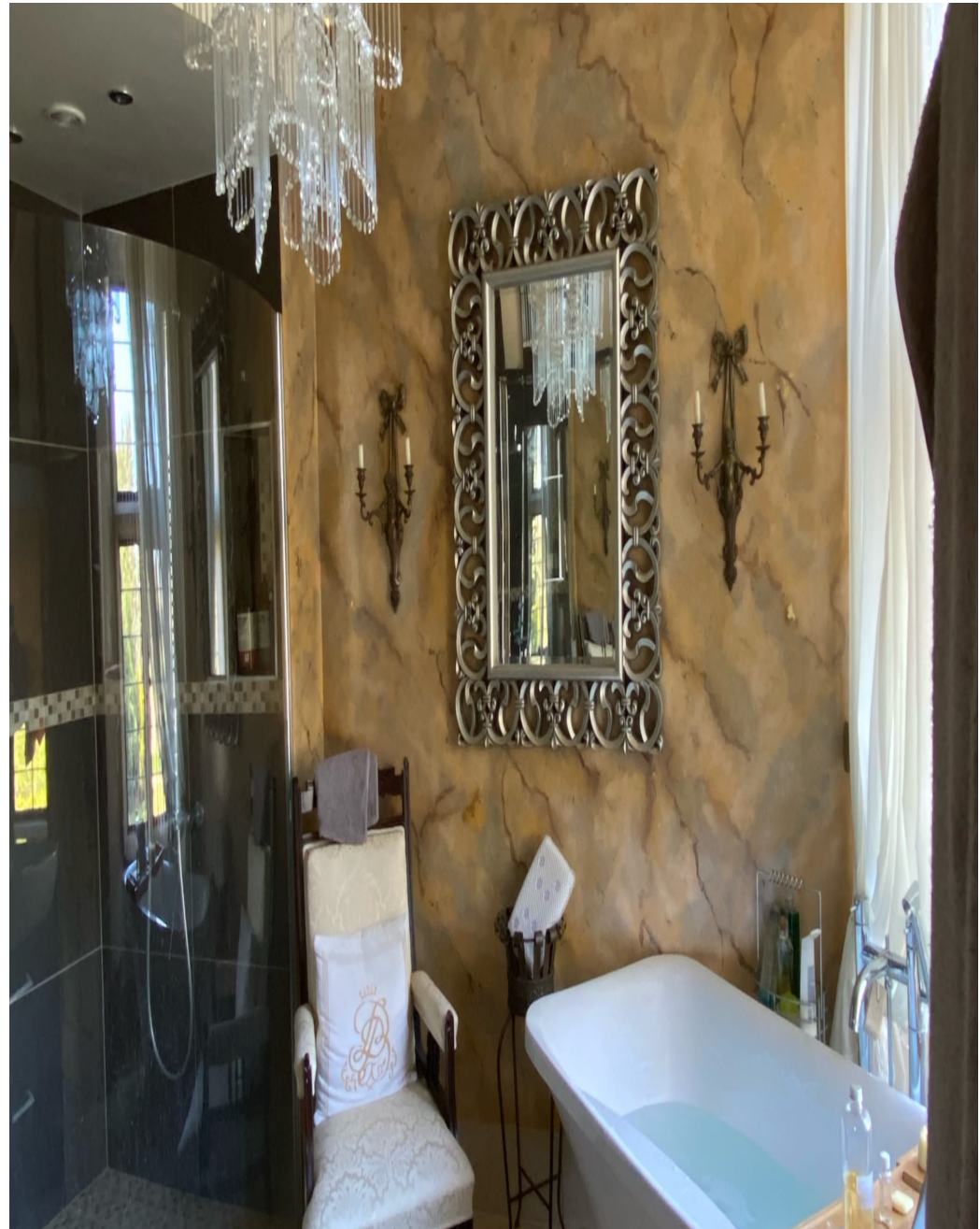
A substantial country manor house set in large gardens and grounds with medieval carpenter's and planning consents, situated at the foothills of the Quantock Hills, England's first designated Area of Outstanding Natural Beauty. Approached through large pillars and an attractive 15th Century stone archway with wonderful wrought iron gates, the driveway leads to a turning oval, parking area and the property's truly magnificent façade. The house boasts a grand reception hall, three graceful and elegant reception rooms, a large office/study, a fully fitted hand painted kitchen/breakfast room with an Aga, a laundry room, seven beautiful bedrooms -

**CAROL HAYES**  
**MANAGEMENT**

020 7482 1555

[www.carolhayesmanagement.co.uk](http://www.carolhayesmanagement.co.uk)





## Stunning Somerset Estate - TA5

A substantial country manor house set in large gardens and grounds with medieval carpenter's and planning consents, situated at the foothills of the Quantock Hills, England's first designated Area of Outstanding Natural Beauty. Approached through large pillars and an attractive 15th Century stone archway with wonderful wrought iron gates, the driveway leads to a turning oval, parking area and the property's truly magnificent façade. The house boasts a grand reception hall, three graceful and elegant reception rooms, a large office/study, a fully fitted hand painted kitchen/breakfast room with an Aga, a laundry room, seven beautiful bedrooms -

**CAROL HAYES**  
**MANAGEMENT**

020 7482 1555

[www.carolhayesmanagement.co.uk](http://www.carolhayesmanagement.co.uk)





## Stunning Somerset Estate - TA5

A substantial country manor house set in large gardens and grounds with medieval carpenter and planning consents, situated at the foothills of the Quantock Hills, England's first designated Area of Outstanding Natural Beauty. Approached through large pillars and an attractive 15th Century stone archway with wonderful wrought iron gates, the driveway leads to a turning oval, parking area and the property's truly magnificent façade. The house boasts a grand reception hall, three graceful and elegant reception rooms, a large office/study, a fully fitted hand painted kitchen/breakfast room with an Aga, a laundry room, seven beautiful bedrooms -

**CAROL HAYES**  
**MANAGEMENT**

020 7482 1555

[www.carolhayesmanagement.co.uk](http://www.carolhayesmanagement.co.uk)