

Seven Sisters Warehouse Two N15

This 2600 sq ft photography and film location space is in a converted former textile factory that oozes character and charm. Comprising an open plan main space with numerous alcoves, different shooting areas and textured backgrounds, the space has been stripped back to original aged brickwork, a peeling paint wooden ceiling and distressed with aged wooden flooring. The space has an abundance of natural light with large windows running around two thirds of the perimeter. There is a large prop selection that is being constantly updated with items ranging from chesterfield sofas to vintage signage and old oil pumps to cinema chairs. For additional prop images, please enquire. There is a separate kitchen area, a green room, a makeup room, change room, three toilets and an outdoor area. Additional spec. industrial gas fan heating, 13 Amp and 63 Amp power. Black Out curtains for shoots that need controlled lighting. The space is available for hire from half day to daily or weekly and can be hired with SEVEN SISTERS STUDIO ONE.



020 7482 1555

www.carolhayesmanagement.co.uk



Seven Sisters Warehouse Two N15

This 2600 sq ft photography and film location space is in a converted former textile factory that oozes character and charm. Comprising an open plan main space with numerous alcoves, different shooting areas and textured backgrounds, the space has been stripped back to original aged brickwork, a peeling paint wooden ceiling and distressed with aged wooden flooring. The space has an abundance of natural light with large windows running around two thirds of the perimeter. There is a large prop selection that is being constantly updated with items ranging from chesterfield sofas to vintage signage and old oil pumps to cinema chairs. For

**CAROLHAYES
MANAGEMENT**

020 7482 1555

www.carolhayesmanagement.co.uk



Seven Sisters Warehouse Two N15

This 2600 sq ft photography and film location space is in a converted former textile factory that oozes character and charm. Comprising an open plan main space with numerous alcoves, different shooting areas and textured backgrounds, the space has been stripped back to original aged brickwork, a peeling paint wooden ceiling and distressed with aged wooden flooring. The space has an abundance of natural light with large windows running around two thirds of the perimeter. There is a large prop selection that is being constantly updated with items ranging from chesterfield sofas to vintage signage and old oil pumps to cinema chairs. For

**CAROLHAYES
MANAGEMENT**

020 7482 1555

www.carolhayesmanagement.co.uk



Seven Sisters Warehouse Two N15

This 2600 sq ft photography and film location space is in a converted former textile factory that oozes character and charm. Comprising an open plan main space with numerous alcoves, different shooting areas and textured backgrounds, the space has been stripped back to original aged brickwork, a peeling paint wooden ceiling and distressed with aged wooden flooring. The space has an abundance of natural light with large windows running around two thirds of the perimeter. There is a large prop selection that is being constantly updated with items ranging from chesterfield sofas to vintage signage and old oil pumps to cinema chairs. For

CAROLHAYES
MANAGEMENT

020 7482 1555

www.carolhayesmanagement.co.uk



Seven Sisters Warehouse Two N15

This 2600 sq ft photography and film location space is in a converted former textile factory that oozes character and charm. Comprising an open plan main space with numerous alcoves, different shooting areas and textured backgrounds, the space has been stripped back to original aged brickwork, a peeling paint wooden ceiling and distressed with aged wooden flooring. The space has an abundance of natural light with large windows running around two thirds of the perimeter. There is a large prop selection that is being constantly updated with items ranging from chesterfield sofas to vintage signage and old oil pumps to cinema chairs. For

CAROLHAYES
MANAGEMENT

020 7482 1555

www.carolhayesmanagement.co.uk



Seven Sisters Warehouse Two N15

This 2600 sq ft photography and film location space is in a converted former textile factory that oozes character and charm. Comprising an open plan main space with numerous alcoves, different shooting areas and textured backgrounds, the space has been stripped back to original aged brickwork, a peeling paint wooden ceiling and distressed with aged wooden flooring. The space has an abundance of natural light with large windows running around two thirds of the perimeter. There is a large prop selection that is being constantly updated with items ranging from chesterfield sofas to vintage signage and old oil pumps to cinema chairs. For

**CAROLHAYES
MANAGEMENT**

020 7482 1555

www.carolhayesmanagement.co.uk



Seven Sisters Warehouse Two N15

This 2600 sq ft photography and film location space is in a converted former textile factory that oozes character and charm. Comprising an open plan main space with numerous alcoves, different shooting areas and textured backgrounds, the space has been stripped back to original aged brickwork, a peeling paint wooden ceiling and distressed with aged wooden flooring. The space has an abundance of natural light with large windows running around two thirds of the perimeter. There is a large prop selection that is being constantly updated with items ranging from chesterfield sofas to vintage signage and old oil pumps to cinema chairs. For

**CAROLHAYES
MANAGEMENT**

020 7482 1555

www.carolhayesmanagement.co.uk



Seven Sisters Warehouse Two N15

This 2600 sq ft photography and film location space is in a converted former textile factory that oozes character and charm. Comprising an open plan main space with numerous alcoves, different shooting areas and textured backgrounds, the space has been stripped back to original aged brickwork, a peeling paint wooden ceiling and distressed with aged wooden flooring. The space has an abundance of natural light with large windows running around two thirds of the perimeter. There is a large prop selection that is being constantly updated with items ranging from chesterfield sofas to vintage signage and old oil pumps to cinema chairs. For

**CAROLHAYES
MANAGEMENT**

020 7482 1555

www.carolhayesmanagement.co.uk



Seven Sisters Warehouse Two N15

This 2600 sq ft photography and film location space is in a converted former textile factory that oozes character and charm. Comprising an open plan main space with numerous alcoves, different shooting areas and textured backgrounds, the space has been stripped back to original aged brickwork, a peeling paint wooden ceiling and distressed with aged wooden flooring. The space has an abundance of natural light with large windows running around two thirds of the perimeter. There is a large prop selection that is being constantly updated with items ranging from chesterfield sofas to vintage signage and old oil pumps to cinema chairs. For

**CAROLHAYES
MANAGEMENT**

020 7482 1555

www.carolhayesmanagement.co.uk



Seven Sisters Warehouse Two N15

This 2600 sq ft photography and film location space is in a converted former textile factory that oozes character and charm. Comprising an open plan main space with numerous alcoves, different shooting areas and textured backgrounds, the space has been stripped back to original aged brickwork, a peeling paint wooden ceiling and distressed with aged wooden flooring. The space has an abundance of natural light with large windows running around two thirds of the perimeter. There is a large prop selection that is being constantly updated with items ranging from chesterfield sofas to vintage signage and old oil pumps to cinema chairs. For

CAROLHAYES
MANAGEMENT

020 7482 1555

www.carolhayesmanagement.co.uk



Seven Sisters Warehouse Two N15

This 2600 sq ft photography and film location space is in a converted former textile factory that oozes character and charm. Comprising an open plan main space with numerous alcoves, different shooting areas and textured backgrounds, the space has been stripped back to original aged brickwork, a peeling paint wooden ceiling and distressed with aged wooden flooring. The space has an abundance of natural light with large windows running around two thirds of the perimeter. There is a large prop selection that is being constantly updated with items ranging from chesterfield sofas to vintage signage and old oil pumps to cinema chairs. For

CAROLHAYES
MANAGEMENT

020 7482 1555

www.carolhayesmanagement.co.uk



Seven Sisters Warehouse Two N15

This 2600 sq ft photography and film location space is in a converted former textile factory that oozes character and charm. Comprising an open plan main space with numerous alcoves, different shooting areas and textured backgrounds, the space has been stripped back to original aged brickwork, a peeling paint wooden ceiling and distressed with aged wooden flooring. The space has an abundance of natural light with large windows running around two thirds of the perimeter. There is a large prop selection that is being constantly updated with items ranging from chesterfield sofas to vintage signage and old oil pumps to cinema chairs. For

**CAROLHAYES
MANAGEMENT**

020 7482 1555

www.carolhayesmanagement.co.uk



Seven Sisters Warehouse Two N15

This 2600 sq ft photography and film location space is in a converted former textile factory that oozes character and charm. Comprising an open plan main space with numerous alcoves, different shooting areas and textured backgrounds, the space has been stripped back to original aged brickwork, a peeling paint wooden ceiling and distressed with aged wooden flooring. The space has an abundance of natural light with large windows running around two thirds of the perimeter. There is a large prop selection that is being constantly updated with items ranging from chesterfield sofas to vintage signage and old oil pumps to cinema chairs. For

CAROLHAYES
MANAGEMENT

020 7482 1555

www.carolhayesmanagement.co.uk



Seven Sisters Warehouse Two N15

This 2600 sq ft photography and film location space is in a converted former textile factory that oozes character and charm. Comprising an open plan main space with numerous alcoves, different shooting areas and textured backgrounds, the space has been stripped back to original aged brickwork, a peeling paint wooden ceiling and distressed with aged wooden flooring. The space has an abundance of natural light with large windows running around two thirds of the perimeter. There is a large prop selection that is being constantly updated with items ranging from chesterfield sofas to vintage signage and old oil pumps to cinema chairs. For

**CAROLHAYES
MANAGEMENT**

020 7482 1555

www.carolhayesmanagement.co.uk



Seven Sisters Warehouse Two N15

This 2600 sq ft photography and film location space is in a converted former textile factory that oozes character and charm. Comprising an open plan main space with numerous alcoves, different shooting areas and textured backgrounds, the space has been stripped back to original aged brickwork, a peeling paint wooden ceiling and distressed with aged wooden flooring. The space has an abundance of natural light with large windows running around two thirds of the perimeter. There is a large prop selection that is being constantly updated with items ranging from chesterfield sofas to vintage signage and old oil pumps to cinema chairs. For

**CAROLHAYES
MANAGEMENT**

020 7482 1555

www.carolhayesmanagement.co.uk



Seven Sisters Warehouse Two N15

This 2600 sq ft photography and film location space is in a converted former textile factory that oozes character and charm. Comprising an open plan main space with numerous alcoves, different shooting areas and textured backgrounds, the space has been stripped back to original aged brickwork, a peeling paint wooden ceiling and distressed with aged wooden flooring. The space has an abundance of natural light with large windows running around two thirds of the perimeter. There is a large prop selection that is being constantly updated with items ranging from chesterfield sofas to vintage signage and old oil pumps to cinema chairs. For

**CAROLHAYES
MANAGEMENT**

020 7482 1555

www.carolhayesmanagement.co.uk



Seven Sisters Warehouse Two N15

This 2600 sq ft photography and film location space is in a converted former textile factory that oozes character and charm. Comprising an open plan main space with numerous alcoves, different shooting areas and textured backgrounds, the space has been stripped back to original aged brickwork, a peeling paint wooden ceiling and distressed with aged wooden flooring. The space has an abundance of natural light with large windows running around two thirds of the perimeter. There is a large prop selection that is being constantly updated with items ranging from chesterfield sofas to vintage signage and old oil pumps to cinema chairs. For

**CAROLHAYES
MANAGEMENT**

020 7482 1555

www.carolhayesmanagement.co.uk



Seven Sisters Warehouse Two N15

This 2600 sq ft photography and film location space is in a converted former textile factory that oozes character and charm. Comprising an open plan main space with numerous alcoves, different shooting areas and textured backgrounds, the space has been stripped back to original aged brickwork, a peeling paint wooden ceiling and distressed with aged wooden flooring. The space has an abundance of natural light with large windows running around two thirds of the perimeter. There is a large prop selection that is being constantly updated with items ranging from chesterfield sofas to vintage signage and old oil pumps to cinema chairs. For

CAROLHAYES
MANAGEMENT

020 7482 1555

www.carolhayesmanagement.co.uk



Seven Sisters Warehouse Two N15

This 2600 sq ft photography and film location space is in a converted former textile factory that oozes character and charm. Comprising an open plan main space with numerous alcoves, different shooting areas and textured backgrounds, the space has been stripped back to original aged brickwork, a peeling paint wooden ceiling and distressed with aged wooden flooring. The space has an abundance of natural light with large windows running around two thirds of the perimeter. There is a large prop selection that is being constantly updated with items ranging from chesterfield sofas to vintage signage and old oil pumps to cinema chairs. For

**CAROLHAYES
MANAGEMENT**

020 7482 1555

www.carolhayesmanagement.co.uk



Seven Sisters Warehouse Two N15

This 2600 sq ft photography and film location space is in a converted former textile factory that oozes character and charm. Comprising an open plan main space with numerous alcoves, different shooting areas and textured backgrounds, the space has been stripped back to original aged brickwork, a peeling paint wooden ceiling and distressed with aged wooden flooring. The space has an abundance of natural light with large windows running around two thirds of the perimeter. There is a large prop selection that is being constantly updated with items ranging from chesterfield sofas to vintage signage and old oil pumps to cinema chairs. For

**CAROLHAYES
MANAGEMENT**

020 7482 1555

www.carolhayesmanagement.co.uk



Seven Sisters Warehouse Two N15

This 2600 sq ft photography and film location space is in a converted former textile factory that oozes character and charm. Comprising an open plan main space with numerous alcoves, different shooting areas and textured backgrounds, the space has been stripped back to original aged brickwork, a peeling paint wooden ceiling and distressed with aged wooden flooring. The space has an abundance of natural light with large windows running around two thirds of the perimeter. There is a large prop selection that is being constantly updated with items ranging from chesterfield sofas to vintage signage and old oil pumps to cinema chairs. For

**CAROLHAYES
MANAGEMENT**

020 7482 1555

www.carolhayesmanagement.co.uk



Seven Sisters Warehouse Two N15

This 2600 sq ft photography and film location space is in a converted former textile factory that oozes character and charm. Comprising an open plan main space with numerous alcoves, different shooting areas and textured backgrounds, the space has been stripped back to original aged brickwork, a peeling paint wooden ceiling and distressed with aged wooden flooring. The space has an abundance of natural light with large windows running around two thirds of the perimeter. There is a large prop selection that is being constantly updated with items ranging from chesterfield sofas to vintage signage and old oil pumps to cinema chairs. For

CAROLHAYES
MANAGEMENT

020 7482 1555

www.carolhayesmanagement.co.uk



Seven Sisters Warehouse Two N15

This 2600 sq ft photography and film location space is in a converted former textile factory that oozes character and charm. Comprising an open plan main space with numerous alcoves, different shooting areas and textured backgrounds, the space has been stripped back to original aged brickwork, a peeling paint wooden ceiling and distressed with aged wooden flooring. The space has an abundance of natural light with large windows running around two thirds of the perimeter. There is a large prop selection that is being constantly updated with items ranging from chesterfield sofas to vintage signage and old oil pumps to cinema chairs. For

**CAROLHAYES
MANAGEMENT**

020 7482 1555

www.carolhayesmanagement.co.uk



Seven Sisters Warehouse Two N15

This 2600 sq ft photography and film location space is in a converted former textile factory that oozes character and charm. Comprising an open plan main space with numerous alcoves, different shooting areas and textured backgrounds, the space has been stripped back to original aged brickwork, a peeling paint wooden ceiling and distressed with aged wooden flooring. The space has an abundance of natural light with large windows running around two thirds of the perimeter. There is a large prop selection that is being constantly updated with items ranging from chesterfield sofas to vintage signage and old oil pumps to cinema chairs. For

**CAROLHAYES
MANAGEMENT**

020 7482 1555

www.carolhayesmanagement.co.uk



Seven Sisters Warehouse Two N15

This 2600 sq ft photography and film location space is in a converted former textile factory that oozes character and charm. Comprising an open plan main space with numerous alcoves, different shooting areas and textured backgrounds, the space has been stripped back to original aged brickwork, a peeling paint wooden ceiling and distressed with aged wooden flooring. The space has an abundance of natural light with large windows running around two thirds of the perimeter. There is a large prop selection that is being constantly updated with items ranging from chesterfield sofas to vintage signage and old oil pumps to cinema chairs. For

CAROLHAYES
MANAGEMENT

020 7482 1555

www.carolhayesmanagement.co.uk



Seven Sisters Warehouse Two N15

This 2600 sq ft photography and film location space is in a converted former textile factory that oozes character and charm. Comprising an open plan main space with numerous alcoves, different shooting areas and textured backgrounds, the space has been stripped back to original aged brickwork, a peeling paint wooden ceiling and distressed with aged wooden flooring. The space has an abundance of natural light with large windows running around two thirds of the perimeter. There is a large prop selection that is being constantly updated with items ranging from chesterfield sofas to vintage signage and old oil pumps to cinema chairs. For

**CAROLHAYES
MANAGEMENT**

020 7482 1555

www.carolhayesmanagement.co.uk



Seven Sisters Warehouse Two N15

This 2600 sq ft photography and film location space is in a converted former textile factory that oozes character and charm. Comprising an open plan main space with numerous alcoves, different shooting areas and textured backgrounds, the space has been stripped back to original aged brickwork, a peeling paint wooden ceiling and distressed with aged wooden flooring. The space has an abundance of natural light with large windows running around two thirds of the perimeter. There is a large prop selection that is being constantly updated with items ranging from chesterfield sofas to vintage signage and old oil pumps to cinema chairs. For

CAROLHAYES
MANAGEMENT

020 7482 1555

www.carolhayesmanagement.co.uk



Seven Sisters Warehouse Two N15

This 2600 sq ft photography and film location space is in a converted former textile factory that oozes character and charm. Comprising an open plan main space with numerous alcoves, different shooting areas and textured backgrounds, the space has been stripped back to original aged brickwork, a peeling paint wooden ceiling and distressed with aged wooden flooring. The space has an abundance of natural light with large windows running around two thirds of the perimeter. There is a large prop selection that is being constantly updated with items ranging from chesterfield sofas to vintage signage and old oil pumps to cinema chairs. For

CAROLHAYES
MANAGEMENT

020 7482 1555

www.carolhayesmanagement.co.uk



Seven Sisters Warehouse Two N15

This 2600 sq ft photography and film location space is in a converted former textile factory that oozes character and charm. Comprising an open plan main space with numerous alcoves, different shooting areas and textured backgrounds, the space has been stripped back to original aged brickwork, a peeling paint wooden ceiling and distressed with aged wooden flooring. The space has an abundance of natural light with large windows running around two thirds of the perimeter. There is a large prop selection that is being constantly updated with items ranging from chesterfield sofas to vintage signage and old oil pumps to cinema chairs. For

CAROLHAYES
MANAGEMENT

020 7482 1555

www.carolhayesmanagement.co.uk



Seven Sisters Warehouse Two N15

This 2600 sq ft photography and film location space is in a converted former textile factory that oozes character and charm. Comprising an open plan main space with numerous alcoves, different shooting areas and textured backgrounds, the space has been stripped back to original aged brickwork, a peeling paint wooden ceiling and distressed with aged wooden flooring. The space has an abundance of natural light with large windows running around two thirds of the perimeter. There is a large prop selection that is being constantly updated with items ranging from chesterfield sofas to vintage signage and old oil pumps to cinema chairs. For

**CAROLHAYES
MANAGEMENT**

020 7482 1555

www.carolhayesmanagement.co.uk



Seven Sisters Warehouse Two N15

This 2600 sq ft photography and film location space is in a converted former textile factory that oozes character and charm. Comprising an open plan main space with numerous alcoves, different shooting areas and textured backgrounds, the space has been stripped back to original aged brickwork, a peeling paint wooden ceiling and distressed with aged wooden flooring. The space has an abundance of natural light with large windows running around two thirds of the perimeter. There is a large prop selection that is being constantly updated with items ranging from chesterfield sofas to vintage signage and old oil pumps to cinema chairs. For

**CAROLHAYES
MANAGEMENT**

020 7482 1555

www.carolhayesmanagement.co.uk



Seven Sisters Warehouse Two N15

This 2600 sq ft photography and film location space is in a converted former textile factory that oozes character and charm. Comprising an open plan main space with numerous alcoves, different shooting areas and textured backgrounds, the space has been stripped back to original aged brickwork, a peeling paint wooden ceiling and distressed with aged wooden flooring. The space has an abundance of natural light with large windows running around two thirds of the perimeter. There is a large prop selection that is being constantly updated with items ranging from chesterfield sofas to vintage signage and old oil pumps to cinema chairs. For

**CAROL HAYES
MANAGEMENT**

020 7482 1555

www.carolhayesmanagement.co.uk



Seven Sisters Warehouse Two N15

This 2600 sq ft photography and film location space is in a converted former textile factory that oozes character and charm. Comprising an open plan main space with numerous alcoves, different shooting areas and textured backgrounds, the space has been stripped back to original aged brickwork, a peeling paint wooden ceiling and distressed with aged wooden flooring. The space has an abundance of natural light with large windows running around two thirds of the perimeter. There is a large prop selection that is being constantly updated with items ranging from chesterfield sofas to vintage signage and old oil pumps to cinema chairs. For

**CAROLHAYES
MANAGEMENT**

020 7482 1555

www.carolhayesmanagement.co.uk



Seven Sisters Warehouse Two N15

This 2600 sq ft photography and film location space is in a converted former textile factory that oozes character and charm. Comprising an open plan main space with numerous alcoves, different shooting areas and textured backgrounds, the space has been stripped back to original aged brickwork, a peeling paint wooden ceiling and distressed with aged wooden flooring. The space has an abundance of natural light with large windows running around two thirds of the perimeter. There is a large prop selection that is being constantly updated with items ranging from chesterfield sofas to vintage signage and old oil pumps to cinema chairs. For

**CAROLHAYES
MANAGEMENT**

020 7482 1555

www.carolhayesmanagement.co.uk



Seven Sisters Warehouse Two N15

This 2600 sq ft photography and film location space is in a converted former textile factory that oozes character and charm. Comprising an open plan main space with numerous alcoves, different shooting areas and textured backgrounds, the space has been stripped back to original aged brickwork, a peeling paint wooden ceiling and distressed with aged wooden flooring. The space has an abundance of natural light with large windows running around two thirds of the perimeter. There is a large prop selection that is being constantly updated with items ranging from chesterfield sofas to vintage signage and old oil pumps to cinema chairs. For

**CAROL HAYES
MANAGEMENT**

020 7482 1555

www.carolhayesmanagement.co.uk



Seven Sisters Warehouse Two N15

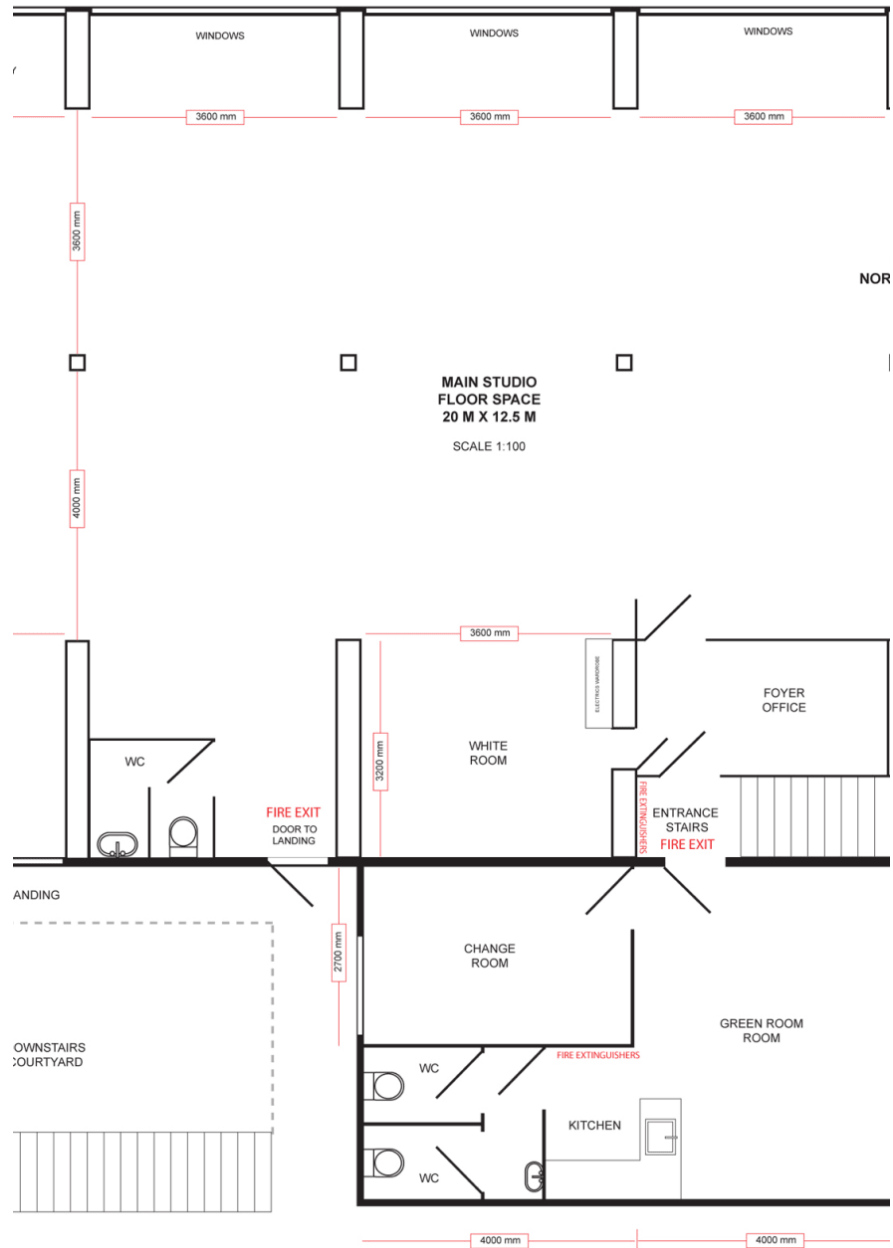
This 2600 sq ft photography and film location space is in a converted former textile factory that oozes character and charm. Comprising an open plan main space with numerous alcoves, different shooting areas and textured backgrounds, the space has been stripped back to original aged brickwork, a peeling paint wooden ceiling and distressed with aged wooden flooring. The space has an abundance of natural light with large windows running around two thirds of the perimeter. There is a large prop selection that is being constantly updated with items ranging from chesterfield sofas to vintage signage and old oil pumps to cinema chairs. For

CAROLHAYES
MANAGEMENT

020 7482 1555

www.carolhayesmanagement.co.uk

DIOS - PHOTOGRAPHY AND FILM LOCATION SPACE - 1ST FLOOR - UNIT 7, 2-6 GOURLE



Seven Sisters Warehouse Two N15

This 2600 sq ft photography and film location space is in a converted former textile factory that oozes character and charm. Comprising an open plan main space with numerous alcoves, different shooting areas and textured backgrounds, the space has been stripped back to original aged brickwork, a peeling paint wooden ceiling and distressed with aged wooden flooring. The space has an abundance of natural light with large windows running around two thirds of the perimeter. There is a large prop selection that is being constantly updated with items ranging from chesterfield sofas to vintage signage and old oil pumps to cinema chairs. For

**CAROL HAYES
MANAGEMENT**

020 7482 1555

www.carolhayesmanagement.co.uk