

Manville Road SW17

A beautiful double fronted Victorian family house in SW2. The house is incredibly stylish and has a stunning open plan kitchen, sitting room and formal dining room. It has 6 large double bedrooms and 4 bathroom/shower rooms. The south facing garden is gorgeous with an outdoor table, outdoor seating and lawn.





Manville Road SW17

A beautiful double fronted Victorian family house in SW2. The house is incredibly stylish and has a stunning open plan kitchen, sitting room and formal dining room. It has 6 large double bedrooms and 4 bathroom/shower rooms. The south facing garden is gorgeous with an outdoor table, outdoor seating and lawn.

CAROL HAYES
MANAGEMENT
CREATIVE ARTIST & STYLE MANAGEMENT

020 7482 1555

www.carolhayesmanagement.co.uk



Manville Road SW17

A beautiful double fronted Victorian family house in SW2. The house is incredibly stylish and has a stunning open plan kitchen, sitting room and formal dining room. It has 6 large double bedrooms and 4 bathroom/shower rooms. The south facing garden is gorgeous with an outdoor table, outdoor seating and lawn.

CAROL HAYES
MANAGEMENT
CREATIVE ARTIST & STYLE MANAGEMENT

020 7482 1555

www.carolhayesmanagement.co.uk



Manville Road SW17

A beautiful double fronted Victorian family house in SW2. The house is incredibly stylish and has a stunning open plan kitchen, sitting room and formal dining room. It has 6 large double bedrooms and 4 bathroom/shower rooms. The south facing garden is gorgeous with an outdoor table, outdoor seating and lawn.

CAROL HAYES
MANAGEMENT
CREATIVE ARTIST & STYLE MANAGEMENT

020 7482 1555

www.carolhayesmanagement.co.uk



Manville Road SW17

A beautiful double fronted Victorian family house in SW2. The house is incredibly stylish and has a stunning open plan kitchen, sitting room and formal dining room. It has 6 large double bedrooms and 4 bathroom/shower rooms. The south facing garden is gorgeous with an outdoor table, outdoor seating and lawn.

CAROL HAYES
MANAGEMENT
CREATIVE ARTIST & STYLE MANAGEMENT

020 7482 1555

www.carolhayesmanagement.co.uk



Manville Road SW17

A beautiful double fronted Victorian family house in SW2. The house is incredibly stylish and has a stunning open plan kitchen, sitting room and formal dining room. It has 6 large double bedrooms and 4 bathroom/shower rooms. The south facing garden is gorgeous with an outdoor table, outdoor seating and lawn.

CAROL HAYES
MANAGEMENT
CREATIVE ARTIST & STYLE MANAGEMENT

020 7482 1555

www.carolhayesmanagement.co.uk



Manville Road SW17

A beautiful double fronted Victorian family house in SW2. The house is incredibly stylish and has a stunning open plan kitchen, sitting room and formal dining room. It has 6 large double bedrooms and 4 bathroom/shower rooms. The south facing garden is gorgeous with an outdoor table, outdoor seating and lawn.

CAROL HAYES
MANAGEMENT
CREATIVE ARTIST & STYLE MANAGEMENT

020 7482 1555

www.carolhayesmanagement.co.uk



Manville Road SW17

A beautiful double fronted Victorian family house in SW2. The house is incredibly stylish and has a stunning open plan kitchen, sitting room and formal dining room. It has 6 large double bedrooms and 4 bathroom/shower rooms. The south facing garden is gorgeous with an outdoor table, outdoor seating and lawn.

CAROL HAYES
MANAGEMENT
CREATIVE ARTIST & STYLE MANAGEMENT

020 7482 1555

www.carolhayesmanagement.co.uk



Manville Road SW17

A beautiful double fronted Victorian family house in SW2. The house is incredibly stylish and has a stunning open plan kitchen, sitting room and formal dining room. It has 6 large double bedrooms and 4 bathroom/shower rooms. The south facing garden is gorgeous with an outdoor table, outdoor seating and lawn.

CAROL HAYES
MANAGEMENT
CREATIVE ARTIST & STYLE MANAGEMENT

020 7482 1555

www.carolhayesmanagement.co.uk



Manville Road SW17

A beautiful double fronted Victorian family house in SW2. The house is incredibly stylish and has a stunning open plan kitchen, sitting room and formal dining room. It has 6 large double bedrooms and 4 bathroom/shower rooms. The south facing garden is gorgeous with an outdoor table, outdoor seating and lawn.

CAROL HAYES
MANAGEMENT
CREATIVE ARTIST & STYLE MANAGEMENT

020 7482 1555

www.carolhayesmanagement.co.uk



Manville Road SW17

A beautiful double fronted Victorian family house in SW2. The house is incredibly stylish and has a stunning open plan kitchen, sitting room and formal dining room. It has 6 large double bedrooms and 4 bathroom/shower rooms. The south facing garden is gorgeous with an outdoor table, outdoor seating and lawn.

CAROL HAYES
MANAGEMENT
CREATIVE ARTIST & STYLE MANAGEMENT

020 7482 1555

www.carolhayesmanagement.co.uk



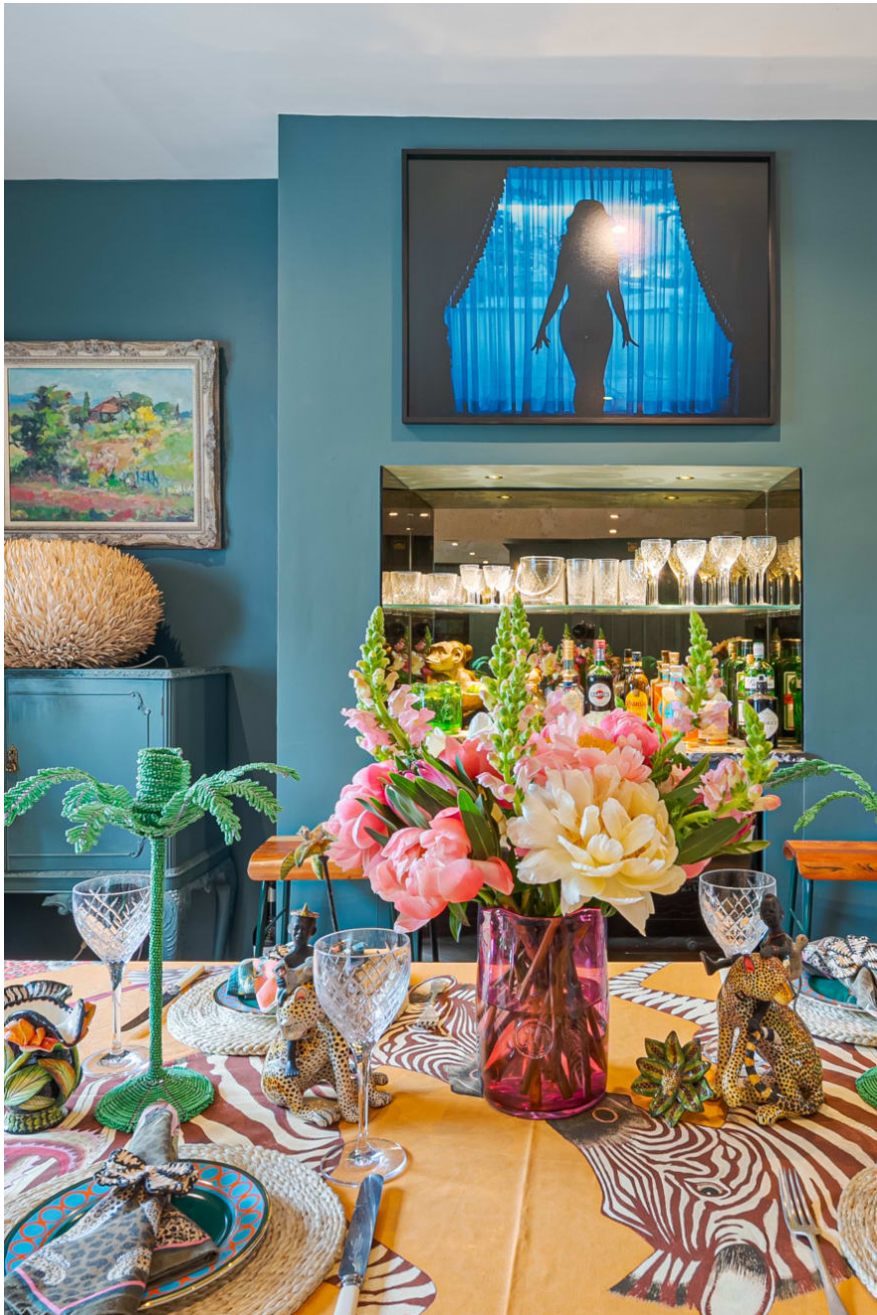
Manville Road SW17

A beautiful double fronted Victorian family house in SW2. The house is incredibly stylish and has a stunning open plan kitchen, sitting room and formal dining room. It has 6 large double bedrooms and 4 bathroom/shower rooms. The south facing garden is gorgeous with an outdoor table, outdoor seating and lawn.

CAROL HAYES
MANAGEMENT
CREATIVE ARTIST & STYLE MANAGEMENT

020 7482 1555

www.carolhayesmanagement.co.uk



Manville Road SW17

A beautiful double fronted Victorian family house in SW2. The house is incredibly stylish and has a stunning open plan kitchen, sitting room and formal dining room. It has 6 large double bedrooms and 4 bathroom/shower rooms. The south facing garden is gorgeous with an outdoor table, outdoor seating and lawn.

CAROL HAYES
MANAGEMENT
CREATIVE ARTIST & STYLE MANAGEMENT

020 7482 1555

www.carolhayesmanagement.co.uk



Manville Road SW17

A beautiful double fronted Victorian family house in SW2. The house is incredibly stylish and has a stunning open plan kitchen, sitting room and formal dining room. It has 6 large double bedrooms and 4 bathroom/shower rooms. The south facing garden is gorgeous with an outdoor table, outdoor seating and lawn.

CAROL HAYES
MANAGEMENT
CREATIVE ARTIST & STYLE MANAGEMENT

020 7482 1555

www.carolhayesmanagement.co.uk



Manville Road SW17

A beautiful double fronted Victorian family house in SW2. The house is incredibly stylish and has a stunning open plan kitchen, sitting room and formal dining room. It has 6 large double bedrooms and 4 bathroom/shower rooms. The south facing garden is gorgeous with an outdoor table, outdoor seating and lawn.

CAROL HAYES
MANAGEMENT
CREATIVE ARTIST & STYLE MANAGEMENT

020 7482 1555

www.carolhayesmanagement.co.uk



Manville Road SW17

A beautiful double fronted Victorian family house in SW2. The house is incredibly stylish and has a stunning open plan kitchen, sitting room and formal dining room. It has 6 large double bedrooms and 4 bathroom/shower rooms. The south facing garden is gorgeous with an outdoor table, outdoor seating and lawn.

CAROL HAYES
MANAGEMENT
CREATIVE ARTIST & STYLE MANAGEMENT

020 7482 1555

www.carolhayesmanagement.co.uk



Manville Road SW17

A beautiful double fronted Victorian family house in SW2. The house is incredibly stylish and has a stunning open plan kitchen, sitting room and formal dining room. It has 6 large double bedrooms and 4 bathroom/shower rooms. The south facing garden is gorgeous with an outdoor table, outdoor seating and lawn.

CAROL HAYES
MANAGEMENT
CREATIVE ARTIST & STYLE MANAGEMENT

020 7482 1555

www.carolhayesmanagement.co.uk



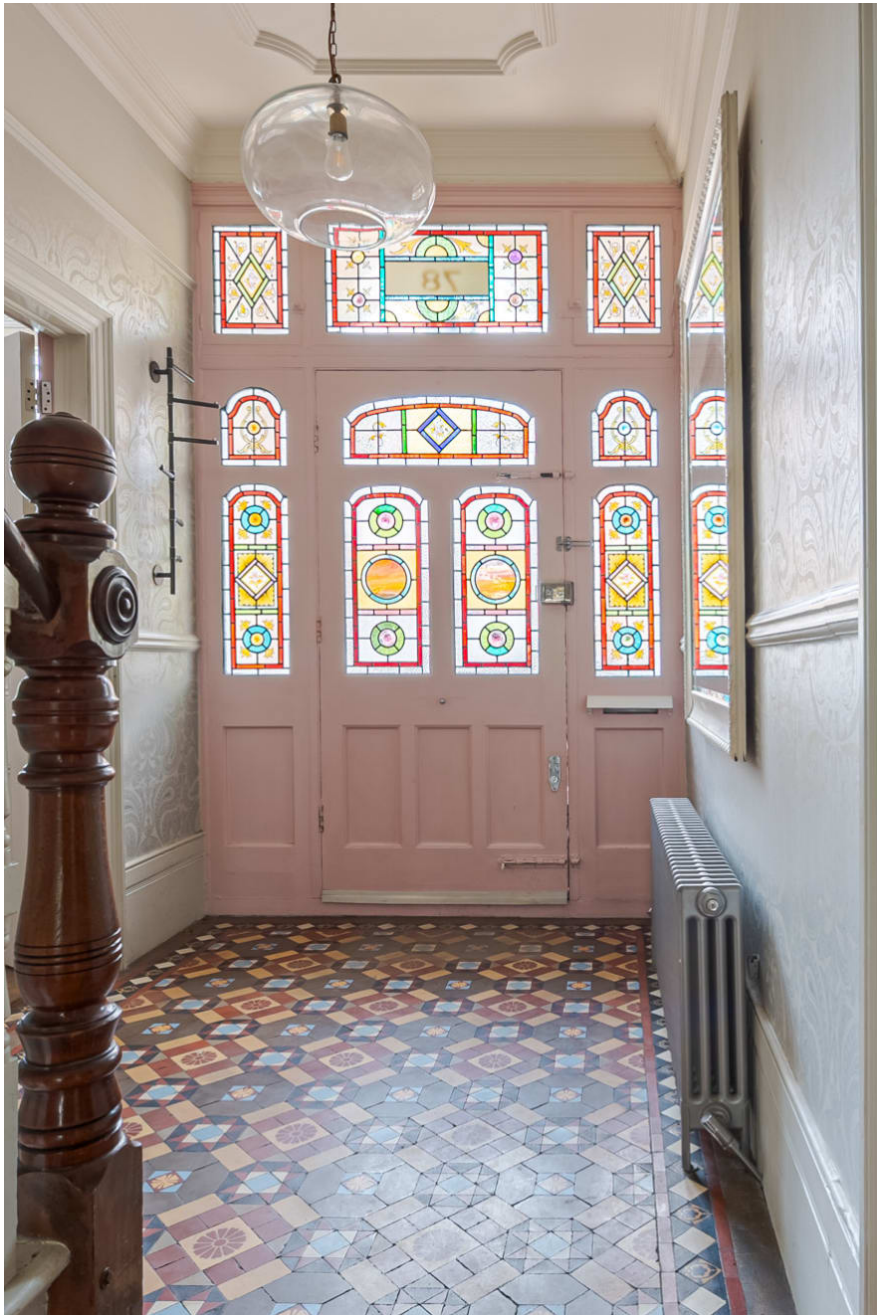
Manville Road SW17

A beautiful double fronted Victorian family house in SW2. The house is incredibly stylish and has a stunning open plan kitchen, sitting room and formal dining room. It has 6 large double bedrooms and 4 bathroom/shower rooms. The south facing garden is gorgeous with an outdoor table, outdoor seating and lawn.

CAROL HAYES
MANAGEMENT
CREATIVE ARTIST & STYLE MANAGEMENT

020 7482 1555

www.carolhayesmanagement.co.uk



Manville Road SW17

A beautiful double fronted Victorian family house in SW2. The house is incredibly stylish and has a stunning open plan kitchen, sitting room and formal dining room. It has 6 large double bedrooms and 4 bathroom/shower rooms. The south facing garden is gorgeous with an outdoor table, outdoor seating and lawn.

CAROL HAYES
MANAGEMENT
CREATIVE ARTIST & STYLE MANAGEMENT

020 7482 1555

www.carolhayesmanagement.co.uk



Manville Road SW17

A beautiful double fronted Victorian family house in SW2. The house is incredibly stylish and has a stunning open plan kitchen, sitting room and formal dining room. It has 6 large double bedrooms and 4 bathroom/shower rooms. The south facing garden is gorgeous with an outdoor table, outdoor seating and lawn.

CAROL HAYES
MANAGEMENT
CREATIVE ARTIST & STYLE MANAGEMENT

020 7482 1555

www.carolhayesmanagement.co.uk



Manville Road SW17

A beautiful double fronted Victorian family house in SW2. The house is incredibly stylish and has a stunning open plan kitchen, sitting room and formal dining room. It has 6 large double bedrooms and 4 bathroom/shower rooms. The south facing garden is gorgeous with an outdoor table, outdoor seating and lawn.

CAROL HAYES
MANAGEMENT
CREATIVE ARTIST & STYLE MANAGEMENT

020 7482 1555

www.carolhayesmanagement.co.uk



Manville Road SW17

A beautiful double fronted Victorian family house in SW2. The house is incredibly stylish and has a stunning open plan kitchen, sitting room and formal dining room. It has 6 large double bedrooms and 4 bathroom/shower rooms. The south facing garden is gorgeous with an outdoor table, outdoor seating and lawn.

CAROL HAYES
MANAGEMENT
CREATIVE ARTIST & STYLE MANAGEMENT

020 7482 1555

www.carolhayesmanagement.co.uk



Manville Road SW17

A beautiful double fronted Victorian family house in SW2. The house is incredibly stylish and has a stunning open plan kitchen, sitting room and formal dining room. It has 6 large double bedrooms and 4 bathroom/shower rooms. The south facing garden is gorgeous with an outdoor table, outdoor seating and lawn.

CAROL HAYES
MANAGEMENT
CREATIVE ARTIST & STYLE MANAGEMENT

020 7482 1555

www.carolhayesmanagement.co.uk



Manville Road SW17

A beautiful double fronted Victorian family house in SW2. The house is incredibly stylish and has a stunning open plan kitchen, sitting room and formal dining room. It has 6 large double bedrooms and 4 bathroom/shower rooms. The south facing garden is gorgeous with an outdoor table, outdoor seating and lawn.

CAROL HAYES
MANAGEMENT
CREATIVE ARTIST & STYLE MANAGEMENT

020 7482 1555

www.carolhayesmanagement.co.uk



Manville Road SW17

A beautiful double fronted Victorian family house in SW2. The house is incredibly stylish and has a stunning open plan kitchen, sitting room and formal dining room. It has 6 large double bedrooms and 4 bathroom/shower rooms. The south facing garden is gorgeous with an outdoor table, outdoor seating and lawn.

CAROL HAYES
MANAGEMENT
CREATIVE ARTIST & STYLE MANAGEMENT

020 7482 1555

www.carolhayesmanagement.co.uk



Manville Road SW17

A beautiful double fronted Victorian family house in SW2. The house is incredibly stylish and has a stunning open plan kitchen, sitting room and formal dining room. It has 6 large double bedrooms and 4 bathroom/shower rooms. The south facing garden is gorgeous with an outdoor table, outdoor seating and lawn.

CAROL HAYES
MANAGEMENT
CREATIVE ARTIST & STYLE MANAGEMENT

020 7482 1555

www.carolhayesmanagement.co.uk



Manville Road SW17

A beautiful double fronted Victorian family house in SW2. The house is incredibly stylish and has a stunning open plan kitchen, sitting room and formal dining room. It has 6 large double bedrooms and 4 bathroom/shower rooms. The south facing garden is gorgeous with an outdoor table, outdoor seating and lawn.

CAROL HAYES
MANAGEMENT
CREATIVE ARTIST & STYLE MANAGEMENT

020 7482 1555

www.carolhayesmanagement.co.uk



Manville Road SW17

A beautiful double fronted Victorian family house in SW2. The house is incredibly stylish and has a stunning open plan kitchen, sitting room and formal dining room. It has 6 large double bedrooms and 4 bathroom/shower rooms. The south facing garden is gorgeous with an outdoor table, outdoor seating and lawn.

CAROL HAYES
MANAGEMENT
CREATIVE ARTIST & STYLE MANAGEMENT

020 7482 1555

www.carolhayesmanagement.co.uk



Manville Road SW17

A beautiful double fronted Victorian family house in SW2. The house is incredibly stylish and has a stunning open plan kitchen, sitting room and formal dining room. It has 6 large double bedrooms and 4 bathroom/shower rooms. The south facing garden is gorgeous with an outdoor table, outdoor seating and lawn.

CAROL HAYES
MANAGEMENT
CREATIVE ARTIST & STYLE MANAGEMENT

020 7482 1555

www.carolhayesmanagement.co.uk



Manville Road SW17

A beautiful double fronted Victorian family house in SW2. The house is incredibly stylish and has a stunning open plan kitchen, sitting room and formal dining room. It has 6 large double bedrooms and 4 bathroom/shower rooms. The south facing garden is gorgeous with an outdoor table, outdoor seating and lawn.

CAROL HAYES
MANAGEMENT
CREATIVE ARTIST & STYLE MANAGEMENT

020 7482 1555

www.carolhayesmanagement.co.uk



Manville Road SW17

A beautiful double fronted Victorian family house in SW2. The house is incredibly stylish and has a stunning open plan kitchen, sitting room and formal dining room. It has 6 large double bedrooms and 4 bathroom/shower rooms. The south facing garden is gorgeous with an outdoor table, outdoor seating and lawn.

CAROL HAYES
MANAGEMENT
CREATIVE ARTIST & STYLE MANAGEMENT

020 7482 1555

www.carolhayesmanagement.co.uk



Manville Road SW17

A beautiful double fronted Victorian family house in SW2. The house is incredibly stylish and has a stunning open plan kitchen, sitting room and formal dining room. It has 6 large double bedrooms and 4 bathroom/shower rooms. The south facing garden is gorgeous with an outdoor table, outdoor seating and lawn.

CAROL HAYES
MANAGEMENT
CREATIVE ARTIST & STYLE MANAGEMENT

020 7482 1555

www.carolhayesmanagement.co.uk



Manville Road SW17

A beautiful double fronted Victorian family house in SW2. The house is incredibly stylish and has a stunning open plan kitchen, sitting room and formal dining room. It has 6 large double bedrooms and 4 bathroom/shower rooms. The south facing garden is gorgeous with an outdoor table, outdoor seating and lawn.

CAROLHAYES
MANAGEMENT
CREATIVE ARTIST & STYLE MANAGEMENT

020 7482 1555

www.carolhayesmanagement.co.uk



Manville Road SW17

A beautiful double fronted Victorian family house in SW2. The house is incredibly stylish and has a stunning open plan kitchen, sitting room and formal dining room. It has 6 large double bedrooms and 4 bathroom/shower rooms. The south facing garden is gorgeous with an outdoor table, outdoor seating and lawn.

CAROL HAYES
MANAGEMENT
CREATIVE ARTIST & STYLE MANAGEMENT

020 7482 1555

www.carolhayesmanagement.co.uk



Manville Road SW17

A beautiful double fronted Victorian family house in SW2. The house is incredibly stylish and has a stunning open plan kitchen, sitting room and formal dining room. It has 6 large double bedrooms and 4 bathroom/shower rooms. The south facing garden is gorgeous with an outdoor table, outdoor seating and lawn.

CAROL HAYES
MANAGEMENT
CREATIVE ARTIST & STYLE MANAGEMENT

020 7482 1555

www.carolhayesmanagement.co.uk



Manville Road SW17

A beautiful double fronted Victorian family house in SW2. The house is incredibly stylish and has a stunning open plan kitchen, sitting room and formal dining room. It has 6 large double bedrooms and 4 bathroom/shower rooms. The south facing garden is gorgeous with an outdoor table, outdoor seating and lawn.

CAROL HAYES
MANAGEMENT
CREATIVE ARTIST & STYLE MANAGEMENT

020 7482 1555

www.carolhayesmanagement.co.uk



Manville Road SW17

A beautiful double fronted Victorian family house in SW2. The house is incredibly stylish and has a stunning open plan kitchen, sitting room and formal dining room. It has 6 large double bedrooms and 4 bathroom/shower rooms. The south facing garden is gorgeous with an outdoor table, outdoor seating and lawn.

CAROL HAYES
MANAGEMENT
CREATIVE ARTIST & STYLE MANAGEMENT

020 7482 1555

www.carolhayesmanagement.co.uk



Manville Road SW17

A beautiful double fronted Victorian family house in SW2. The house is incredibly stylish and has a stunning open plan kitchen, sitting room and formal dining room. It has 6 large double bedrooms and 4 bathroom/shower rooms. The south facing garden is gorgeous with an outdoor table, outdoor seating and lawn.

CAROL HAYES
MANAGEMENT
CREATIVE ARTIST & STYLE MANAGEMENT

020 7482 1555

www.carolhayesmanagement.co.uk



Manville Road SW17

A beautiful double fronted Victorian family house in SW2. The house is incredibly stylish and has a stunning open plan kitchen, sitting room and formal dining room. It has 6 large double bedrooms and 4 bathroom/shower rooms. The south facing garden is gorgeous with an outdoor table, outdoor seating and lawn.

CAROL HAYES
MANAGEMENT
CREATIVE ARTIST & STYLE MANAGEMENT

020 7482 1555

www.carolhayesmanagement.co.uk



Manville Road SW17

A beautiful double fronted Victorian family house in SW2. The house is incredibly stylish and has a stunning open plan kitchen, sitting room and formal dining room. It has 6 large double bedrooms and 4 bathroom/shower rooms. The south facing garden is gorgeous with an outdoor table, outdoor seating and lawn.

CAROL HAYES
MANAGEMENT
CREATIVE ARTIST & STYLE MANAGEMENT

020 7482 1555

www.carolhayesmanagement.co.uk



Manville Road SW17

A beautiful double fronted Victorian family house in SW2. The house is incredibly stylish and has a stunning open plan kitchen, sitting room and formal dining room. It has 6 large double bedrooms and 4 bathroom/shower rooms. The south facing garden is gorgeous with an outdoor table, outdoor seating and lawn.

CAROL HAYES
MANAGEMENT
CREATIVE ARTIST & STYLE MANAGEMENT

020 7482 1555

www.carolhayesmanagement.co.uk



Manville Road SW17

A beautiful double fronted Victorian family house in SW2. The house is incredibly stylish and has a stunning open plan kitchen, sitting room and formal dining room. It has 6 large double bedrooms and 4 bathroom/shower rooms. The south facing garden is gorgeous with an outdoor table, outdoor seating and lawn.

CAROL HAYES
MANAGEMENT
CREATIVE ARTIST & STYLE MANAGEMENT

020 7482 1555

www.carolhayesmanagement.co.uk



Manville Road SW17

A beautiful double fronted Victorian family house in SW2. The house is incredibly stylish and has a stunning open plan kitchen, sitting room and formal dining room. It has 6 large double bedrooms and 4 bathroom/shower rooms. The south facing garden is gorgeous with an outdoor table, outdoor seating and lawn.

CAROL HAYES
MANAGEMENT
CREATIVE ARTIST & STYLE MANAGEMENT

020 7482 1555

www.carolhayesmanagement.co.uk