

Laundry E5

A light filled renovated factory owned by interior stylist as a natural daylight location. Created with the use of different textures to provide multi backdrops - wall :-reclaimed mahogany - gym floor - bare plaster - shuttered concrete - corrugated sheets :- floots paraquet - poured concrete and mahogany The location has interesting props, a variety of house plants and vintage furniture. First and second floor accessible by a spiral staircase.





Laundry E5

A light filled renovated factory owned by interior stylist as a natural daylight location. Created with the use of different textures to provide multi backdrops - wall :- reclaimed mahogany - gym floor - bare plaster - shuttered concrete - corrugated sheets :- floors parquet - poured concrete and mahogany The location has interesting props, a variety of house plants and vintage furniture. First and second floor accessible by a spiral staircase.

CAROLHAYES
MANAGEMENT

020 7482 1555

www.carolhayesmanagement.co.uk



Laundry E5

A light filled renovated factory owned by interior stylist as a natural daylight location. Created with the use of different textures to provide multi backdrops - wall :- reclaimed mahogany - gym floor - bare plaster - shuttered concrete - corrugated sheets - hoots paraquet - poured concrete and mahogany The location has interesting props, a variety of house plants and vintage furniture. First and second floor accessible by a spiral staircase.

CAROLHAYES
MANAGEMENT
PROPERTY & EVENT MANAGEMENT

020 7482 1555

www.carolhayesmanagement.co.uk



Laundry E5

A light filled renovated factory owned by interior stylist as a natural daylight location. Created with the use of different textures to provide multi backdrops - wall :- reclaimed mahogany - gym floor - bare plaster - shuttered concrete - corrugated sheets :- floors parquet - poured concrete and mahogany The location has interesting props, a variety of house plants and vintage furniture. First and second floor accessible by a spiral staircase.

CAROL HAYES
MANAGEMENT
PROPERTY MANAGEMENT

020 7482 1555

www.carolhayesmanagement.co.uk



Laundry E5

A light filled renovated factory owned by interior stylist as a natural daylight location. Created with the use of different textures to provide multi backdrops - wall :- reclaimed mahogany - gym floor - bare plaster - shuttered concrete - corrugated sheets - hoots paraquet - poured concrete and mahogany The location has interesting props, a variety of house plants and vintage furniture. First and second floor accessible by a spiral staircase.

CAROLHAYES
MANAGEMENT
PROPERTY & EVENT MANAGEMENT

020 7482 1555

www.carolhayesmanagement.co.uk



Laundry E5

A light filled renovated factory owned by interior stylist as a natural daylight location. Created with the use of different textures to provide multi backdrops - wall :- reclaimed mahogany - gym floor - bare plaster - shuttered concrete - corrugated sheets - hoots paraquet - poured concrete and mahogany The location has interesting props, a variety of house plants and vintage furniture. First and second floor accessible by a spiral staircase.

CAROL HAYES
MANAGEMENT

020 7482 1555

www.carolhayesmanagement.co.uk



Laundry E5

A light filled renovated factory owned by interior stylist as a natural daylight location. Created with the use of different textures to provide multi backdrops - wall :- reclaimed mahogany - gym floor - bare plaster - shuttered concrete - corrugated sheets :- hoots paraquet - poured concrete and mahogany The location has interesting props, a variety of house plants and vintage furniture. First and second floor accessible by a spiral staircase.

CAROLHAYES
MANAGEMENT

020 7482 1555

www.carolhayesmanagement.co.uk



Laundry E5

A light filled renovated factory owned by interior stylist as a natural daylight location. Created with the use of different textures to provide multi backdrops - wall :- reclaimed mahogany - gym floor - bare plaster - shuttered concrete - corrugated sheets :- hoods parquet - poured concrete and mahogany The location has interesting props, a variety of house plants and vintage furniture. First and second floor accessible by a spiral staircase.

CAROLHAYES
MANAGEMENT

020 7482 1555

www.carolhayesmanagement.co.uk



Laundry E5

A light filled renovated factory owned by interior stylist as a natural daylight location. Created with the use of different textures to provide multi backdrops - wall :- reclaimed mahogany - gym floor - bare plaster - shuttered concrete - corrugated sheets :- hoots paraquet - poured concrete and mahogany The location has interesting props, a variety of house plants and vintage furniture. First and second floor accessible by a spiral staircase.

CAROL HAYES
MANAGEMENT

020 7482 1555

www.carolhayesmanagement.co.uk



Laundry E5

A light filled renovated factory owned by interior stylist as a natural daylight location. Created with the use of different textures to provide multi backdrops - wall :- reclaimed mahogany - gym floor - bare plaster - shuttered concrete - corrugated sheets :- hoods paraquet - poured concrete and mahogany The location has interesting props, a variety of house plants and vintage furniture. First and second floor accessible by a spiral staircase.

CAROL HAYES
MANAGEMENT

020 7482 1555

www.carolhayesmanagement.co.uk



Laundry E5

A light filled renovated factory owned by interior stylist as a natural daylight location. Created with the use of different textures to provide multi backdrops - wall :- reclaimed mahogany - gym floor - bare plaster - shuttered concrete - corrugated sheets - herringbone parquet - poured concrete and mahogany The location has interesting props, a variety of house plants and vintage furniture. First and second floor accessible by a spiral staircase.

CAROLHAYES
MANAGEMENT
PROPERTY & EVENT MANAGEMENT

020 7482 1555

www.carolhayesmanagement.co.uk



Laundry E5

A light filled renovated factory owned by interior stylist as a natural daylight location. Created with the use of different textures to provide multi backdrops - wall :- reclaimed mahogany - gym floor - bare plaster - shuttered concrete - corrugated sheets - hoots paraquet - poured concrete and mahogany The location has interesting props, a variety of house plants and vintage furniture. First and second floor accessible by a spiral staircase.

CAROL HAYES
MANAGEMENT
PROPERTY MANAGEMENT

020 7482 1555

www.carolhayesmanagement.co.uk



Laundry E5

A light filled renovated factory owned by interior stylist as a natural daylight location. Created with the use of different textures to provide multi backdrops - wall :- reclaimed mahogany - gym floor - bare plaster - shuttered concrete - corrugated sheets - herringbone parquet - poured concrete and mahogany The location has interesting props, a variety of house plants and vintage furniture. First and second floor accessible by a spiral staircase.

CAROL HAYES
MANAGEMENT
PROPERTY & EVENT MANAGEMENT

020 7482 1555

www.carolhayesmanagement.co.uk



Laundry E5

A light filled renovated factory owned by interior stylist as a natural daylight location. Created with the use of different textures to provide multi backdrops - wall :- reclaimed mahogany - gym floor - bare plaster - shuttered concrete - corrugated sheets - hoots parquet - poured concrete and mahogany The location has interesting props, a variety of house plants and vintage furniture. First and second floor accessible by a spiral staircase.

CAROLHAYES
MANAGEMENT
PROPERTY & EVENT MANAGEMENT

020 7482 1555

www.carolhayesmanagement.co.uk



Laundry E5

A light filled renovated factory owned by interior stylist as a natural daylight location. Created with the use of different textures to provide multi backdrops - wall :- reclaimed mahogany - gym floor - bare plaster - shuttered concrete - corrugated sheets - hoots parquet - poured concrete and mahogany The location has interesting props, a variety of house plants and vintage furniture. First and second floor accessible by a spiral staircase.

CAROLHAYES
MANAGEMENT
PROPERTY & EVENT MANAGEMENT

020 7482 1555

www.carolhayesmanagement.co.uk



Laundry E5

A light filled renovated factory owned by interior stylist as a natural daylight location. Created with the use of different textures to provide multi backdrops - wall :- reclaimed mahogany - gym floor - bare plaster - shuttered concrete - corrugated sheets - hoots parquet - poured concrete and mahogany The location has interesting props, a variety of house plants and vintage furniture. First and second floor accessible by a spiral staircase.

CAROL HAYES
MANAGEMENT
PROPERTY & EVENT MANAGEMENT

020 7482 1555

www.carolhayesmanagement.co.uk



Laundry E5

A light filled renovated factory owned by interior stylist as a natural daylight location. Created with the use of different textures to provide multi backdrops - wall :- reclaimed mahogany - gym floor - bare plaster - shuttered concrete - corrugated sheets - hoots parquet - poured concrete and mahogany The location has interesting props, a variety of house plants and vintage furniture. First and second floor accessible by a spiral staircase.

CAROL HAYES
MANAGEMENT
PROPERTY & EVENT MANAGEMENT

020 7482 1555

www.carolhayesmanagement.co.uk



Laundry E5

A light filled renovated factory owned by interior stylist as a natural daylight location. Created with the use of different textures to provide multi backdrops - wall :- reclaimed mahogany - gym floor - bare plaster - shuttered concrete - corrugated sheets :- hoods paraquet - poured concrete and mahogany The location has interesting props, a variety of house plants and vintage furniture. First and second floor accessible by a spiral staircase.

CAROL HAYES
MANAGEMENT
PROPERTY MANAGEMENT

020 7482 1555

www.carolhayesmanagement.co.uk



Laundry E5

A light filled renovated factory owned by interior stylist as a natural daylight location. Created with the use of different textures to provide multi backdrops - wall :- reclaimed mahogany - gym floor - bare plaster - shuttered concrete - corrugated sheets - hoods parquet - poured concrete and mahogany The location has interesting props, a variety of house plants and vintage furniture. First and second floor accessible by a spiral staircase.

CAROL HAYES
MANAGEMENT
PROPERTY & EVENT MANAGEMENT

020 7482 1555

www.carolhayesmanagement.co.uk



Laundry E5

A light filled renovated factory owned by interior stylist as a natural daylight location. Created with the use of different textures to provide multi backdrops - wall :- reclaimed mahogany - gym floor - bare plaster - shuttered concrete - corrugated sheets - hoots parquet - poured concrete and mahogany The location has interesting props, a variety of house plants and vintage furniture. First and second floor accessible by a spiral staircase.

CAROLHAYES
MANAGEMENT
PROPERTY & FACILITY MANAGEMENT

020 7482 1555

www.carolhayesmanagement.co.uk



Laundry E5

A light filled renovated factory owned by interior stylist as a natural daylight location. Created with the use of different textures to provide multi backdrops - wall :- reclaimed mahogany - gym floor - bare plaster - shuttered concrete - corrugated sheets - hoods parquet - poured concrete and mahogany The location has interesting props, a variety of house plants and vintage furniture. First and second floor accessible by a spiral staircase.

CAROL HAYES
MANAGEMENT
PROPERTY & EVENT MANAGEMENT

020 7482 1555

www.carolhayesmanagement.co.uk



Laundry E5

A light filled renovated factory owned by interior stylist as a natural daylight location. Created with the use of different textures to provide multi backdrops - wall :- reclaimed mahogany - gym floor - bare plaster - shuttered concrete - corrugated sheets - hoots parquet - poured concrete and mahogany The location has interesting props, a variety of house plants and vintage furniture. First and second floor accessible by a spiral staircase.

CAROLHAYES
MANAGEMENT

020 7482 1555

www.carolhayesmanagement.co.uk



Laundry E5

A light filled renovated factory owned by interior stylist as a natural daylight location. Created with the use of different textures to provide multi backdrops - wall :- reclaimed mahogany - gym floor - bare plaster - shuttered concrete - corrugated sheets - hoots parquet - poured concrete and mahogany The location has interesting props, a variety of house plants and vintage furniture. First and second floor accessible by a spiral staircase.

CAROL HAYES
MANAGEMENT

020 7482 1555

www.carolhayesmanagement.co.uk



Laundry E5

A light filled renovated factory owned by interior stylist as a natural daylight location. Created with the use of different textures to provide multi backdrops - wall :- reclaimed mahogany - gym floor - bare plaster - shuttered concrete - corrugated sheets - hoods parquet - poured concrete and mahogany The location has interesting props, a variety of house plants and vintage furniture. First and second floor accessible by a spiral staircase.

CAROLHAYES
MANAGEMENT

020 7482 1555

www.carolhayesmanagement.co.uk



Laundry E5

A light filled renovated factory owned by interior stylist as a natural daylight location. Created with the use of different textures to provide multi backdrops - wall :- reclaimed mahogany - gym floor - bare plaster - shuttered concrete - corrugated sheets - hoods parquet - poured concrete and mahogany The location has interesting props, a variety of house plants and vintage furniture. First and second floor accessible by a spiral staircase.

CAROLHAYES
MANAGEMENT
PROPERTY & FACILITY MANAGEMENT

020 7482 1555

www.carolhayesmanagement.co.uk



Laundry E5

A light filled renovated factory owned by interior stylist as a natural daylight location. Created with the use of different textures to provide multi backdrops - wall :- reclaimed mahogany - gym floor - bare plaster - shuttered concrete - corrugated sheets :- hoots paraquet - poured concrete and mahogany The location has interesting props, a variety of house plants and vintage furniture. First and second floor accessible by a spiral staircase.

CAROLHAYES
MANAGEMENT
PROPERTY & FACILITY MANAGEMENT

020 7482 1555

www.carolhayesmanagement.co.uk



Laundry E5

A light filled renovated factory owned by interior stylist as a natural daylight location. Created with the use of different textures to provide multi backdrops - wall :- reclaimed mahogany - gym floor - bare plaster - shuttered concrete - corrugated sheets - hoots paraquet - poured concrete and mahogany The location has interesting props, a variety of house plants and vintage furniture. First and second floor accessible by a spiral staircase.

CAROLHAYES
MANAGEMENT
PROPERTY & EVENT MANAGEMENT

020 7482 1555

www.carolhayesmanagement.co.uk



Laundry E5

A light filled renovated factory owned by interior stylist as a natural daylight location. Created with the use of different textures to provide multi backdrops - wall :- reclaimed mahogany - gym floor - bare plaster - shuttered concrete - corrugated sheets - hoots parquet - poured concrete and mahogany The location has interesting props, a variety of house plants and vintage furniture. First and second floor accessible by a spiral staircase.

CAROL HAYES
MANAGEMENT
PROPERTY & EVENT MANAGEMENT

020 7482 1555

www.carolhayesmanagement.co.uk



Laundry E5

A light filled renovated factory owned by interior stylist as a natural daylight location. Created with the use of different textures to provide multi backdrops - wall :- reclaimed mahogany - gym floor - bare plaster - shuttered concrete - corrugated sheets - hoots paraquet - poured concrete and mahogany The location has interesting props, a variety of house plants and vintage furniture. First and second floor accessible by a spiral staircase.

CAROL HAYES
MANAGEMENT

020 7482 1555

www.carolhayesmanagement.co.uk



Laundry E5

A light filled renovated factory owned by interior stylist as a natural daylight location. Created with the use of different textures to provide multi backdrops - wall :- reclaimed mahogany - gym floor - bare plaster - shuttered concrete - corrugated sheets - hoots parquet - poured concrete and mahogany The location has interesting props, a variety of house plants and vintage furniture. First and second floor accessible by a spiral staircase.

CAROL HAYES
MANAGEMENT
PROPERTY & EVENT MANAGEMENT

020 7482 1555

www.carolhayesmanagement.co.uk



Laundry E5

A light filled renovated factory owned by interior stylist as a natural daylight location. Created with the use of different textures to provide multi backdrops - wall :- reclaimed mahogany - gym floor - bare plaster - shuttered concrete - corrugated sheets - hoods parquet - poured concrete and mahogany The location has interesting props, a variety of house plants and vintage furniture. First and second floor accessible by a spiral staircase.

CAROLHAYES
MANAGEMENT
PROPERTY & EVENT MANAGEMENT

020 7482 1555

www.carolhayesmanagement.co.uk



Laundry E5

A light filled renovated factory owned by interior stylist as a natural daylight location. Created with the use of different textures to provide multi backdrops - wall :- reclaimed mahogany - gym floor - bare plaster - shuttered concrete - corrugated sheets - hoots paraquet - poured concrete and mahogany The location has interesting props, a variety of house plants and vintage furniture. First and second floor accessible by a spiral staircase.

CAROL HAYES
MANAGEMENT

020 7482 1555

www.carolhayesmanagement.co.uk



Laundry E5

A light filled renovated factory owned by interior stylist as a natural daylight location. Created with the use of different textures to provide multi backdrops - wall :- reclaimed mahogany - gym floor - bare plaster - shuttered concrete - corrugated sheets :- hoots paraquet - poured concrete and mahogany The location has interesting props, a variety of house plants and vintage furniture. First and second floor accessible by a spiral staircase.

CAROLHAYES
MANAGEMENT

020 7482 1555

www.carolhayesmanagement.co.uk



Laundry E5

A light filled renovated factory owned by interior stylist as a natural daylight location. Created with the use of different textures to provide multi backdrops - wall :- reclaimed mahogany - gym floor - bare plaster - shuttered concrete - corrugated sheets - hoods paraquet - poured concrete and mahogany The location has interesting props, a variety of house plants and vintage furniture. First and second floor accessible by a spiral staircase.

CAROL HAYES
MANAGEMENT
PROPERTY MANAGEMENT

020 7482 1555

www.carolhayesmanagement.co.uk



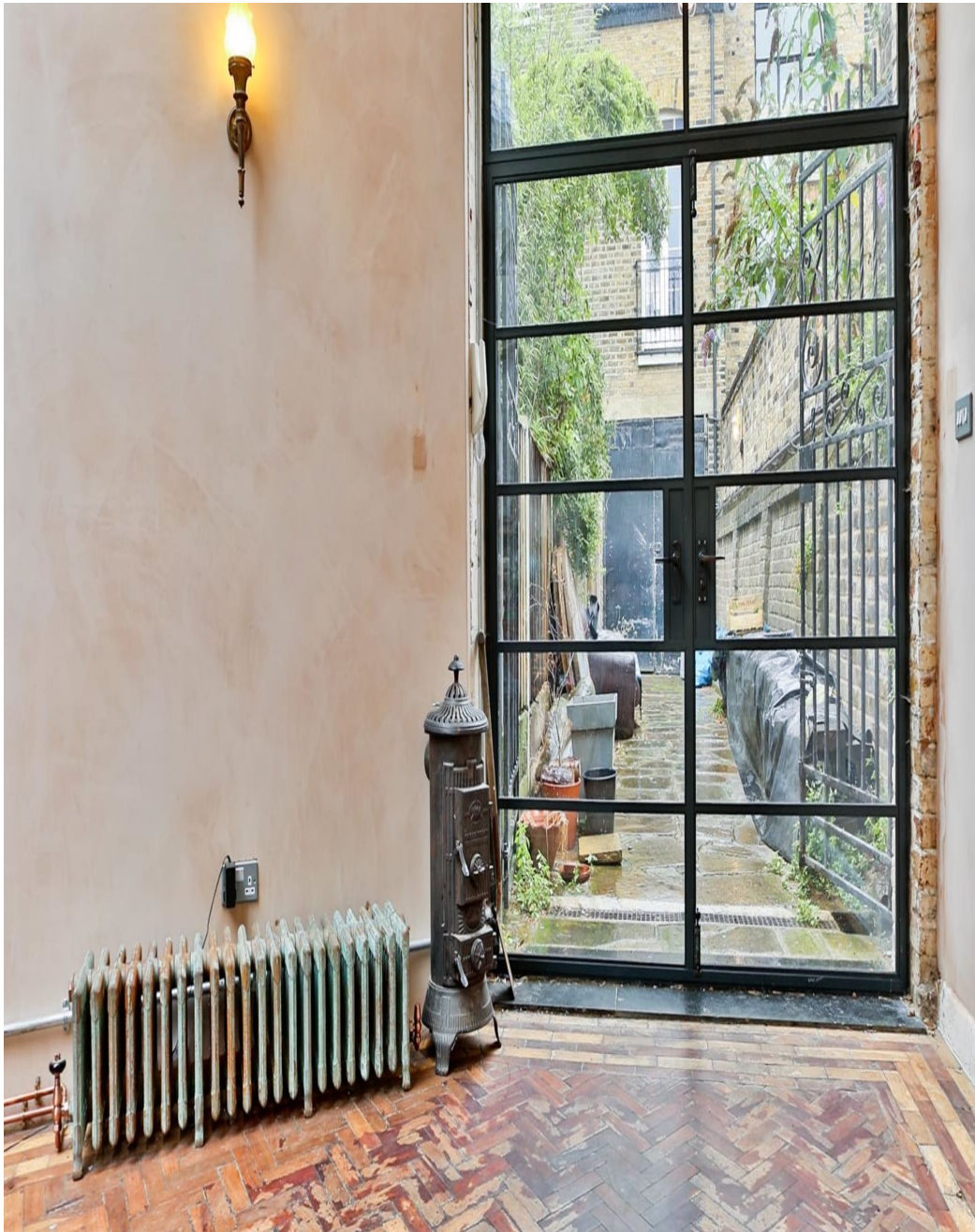
Laundry E5

A light filled renovated factory owned by interior stylist as a natural daylight location. Created with the use of different textures to provide multi backdrops - wall :- reclaimed mahogany - gym floor - bare plaster - shuttered concrete - corrugated sheets :- hoots parquet - poured concrete and mahogany The location has interesting props, a variety of house plants and vintage furniture. First and second floor accessible by a spiral staircase.

CAROL HAYES
MANAGEMENT
PROPERTY & FACILITY MANAGEMENT

020 7482 1555

www.carolhayesmanagement.co.uk



Laundry E5

A light filled renovated factory owned by interior stylist as a natural daylight location. Created with the use of different textures to provide multi backdrops - wall :- reclaimed mahogany - gym floor - bare plaster - shuttered concrete - corrugated sheets :- hoots paraquet - poured concrete and mahogany The location has interesting props, a variety of house plants and vintage furniture. First and second floor accessible by a spiral staircase.

CAROL HAYES
MANAGEMENT

020 7482 1555

www.carolhayesmanagement.co.uk



Laundry E5

A light filled renovated factory owned by interior stylist as a natural daylight location. Created with the use of different textures to provide multi backdrops - wall :- reclaimed mahogany - gym floor - bare plaster - shuttered concrete - corrugated sheets - hoods paraquet - poured concrete and mahogany The location has interesting props, a variety of house plants and vintage furniture. First and second floor accessible by a spiral staircase.

CAROLHAYES
MANAGEMENT
PROPERTY & FACILITY MANAGEMENT

020 7482 1555

www.carolhayesmanagement.co.uk