

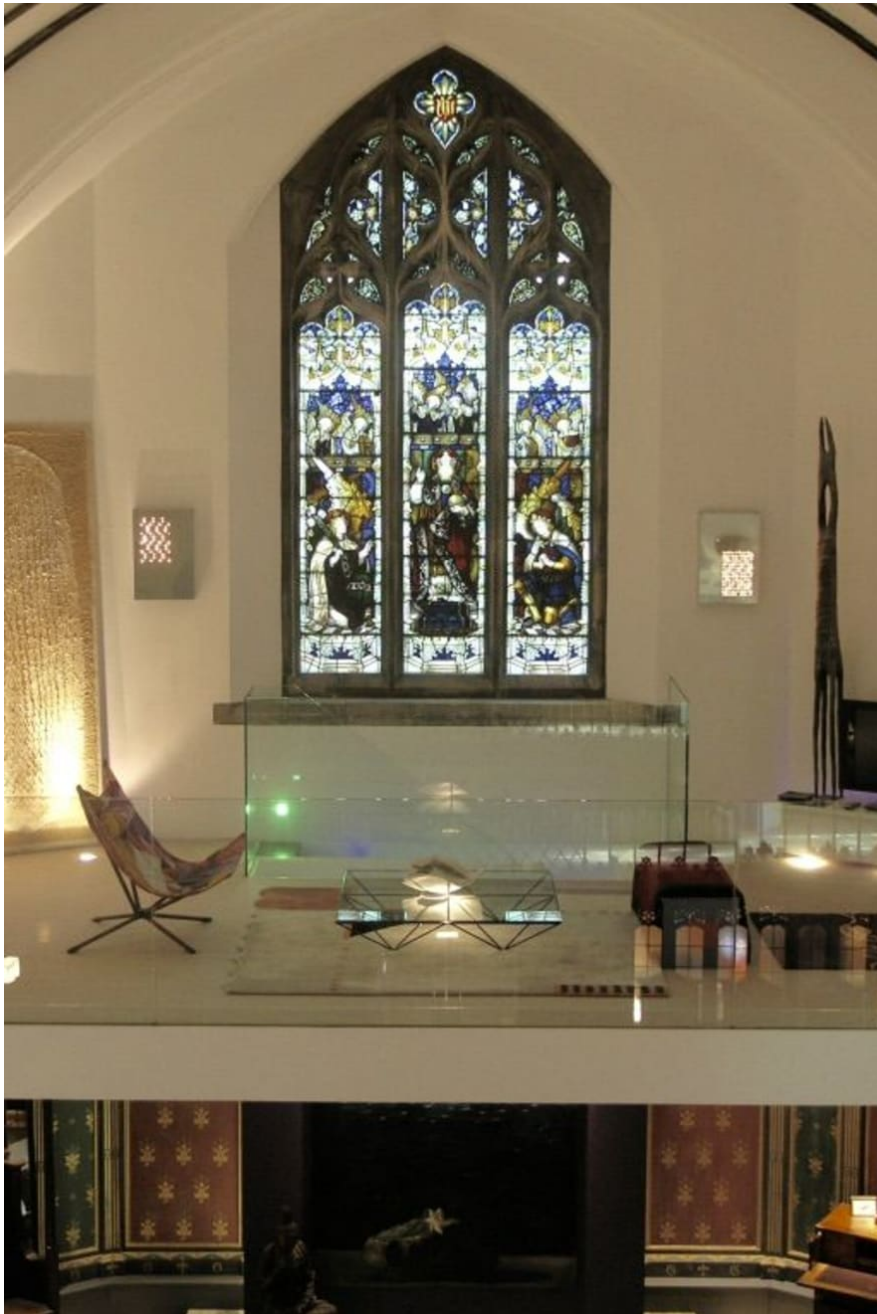
# Converted Chapel in Camberwell

A Grade II listed building with unique historic character, converted to retain a sense of calm within its beautiful proportions and beneath the stained glass windows. Sanded timber floors enhance the light and all new timber panelling and doors use maple to contrast well with all the existing dark carved wood. A mezzanine has been added at the altar end, carefully placing the staircase to still reveal the ornate Marble floor. Upstairs on this mezzanine, carpet and a low slung sofa provide a contrast to the cool, hard surfaces below. An extra mezzanine at the other end (where the organ loft had been) allows for a small bedroom, a study, a gallery library, a bathroom and a walk-in wardrobe. The space above this has become the master bedroom incorporating a freestanding bath and the bespoke dark brown leather bed via the Eileen Gray Coiffeuse help to make it stand out completely. Special furniture by Mark Brazier Jones, a bespoke coffee table, a rug, baby grand piano, an eighteenth century Chinese carving all blend with the



020 7482 1555

[www.carolhayesmanagement.co.uk](http://www.carolhayesmanagement.co.uk)



## Converted Chapel in Camberwell

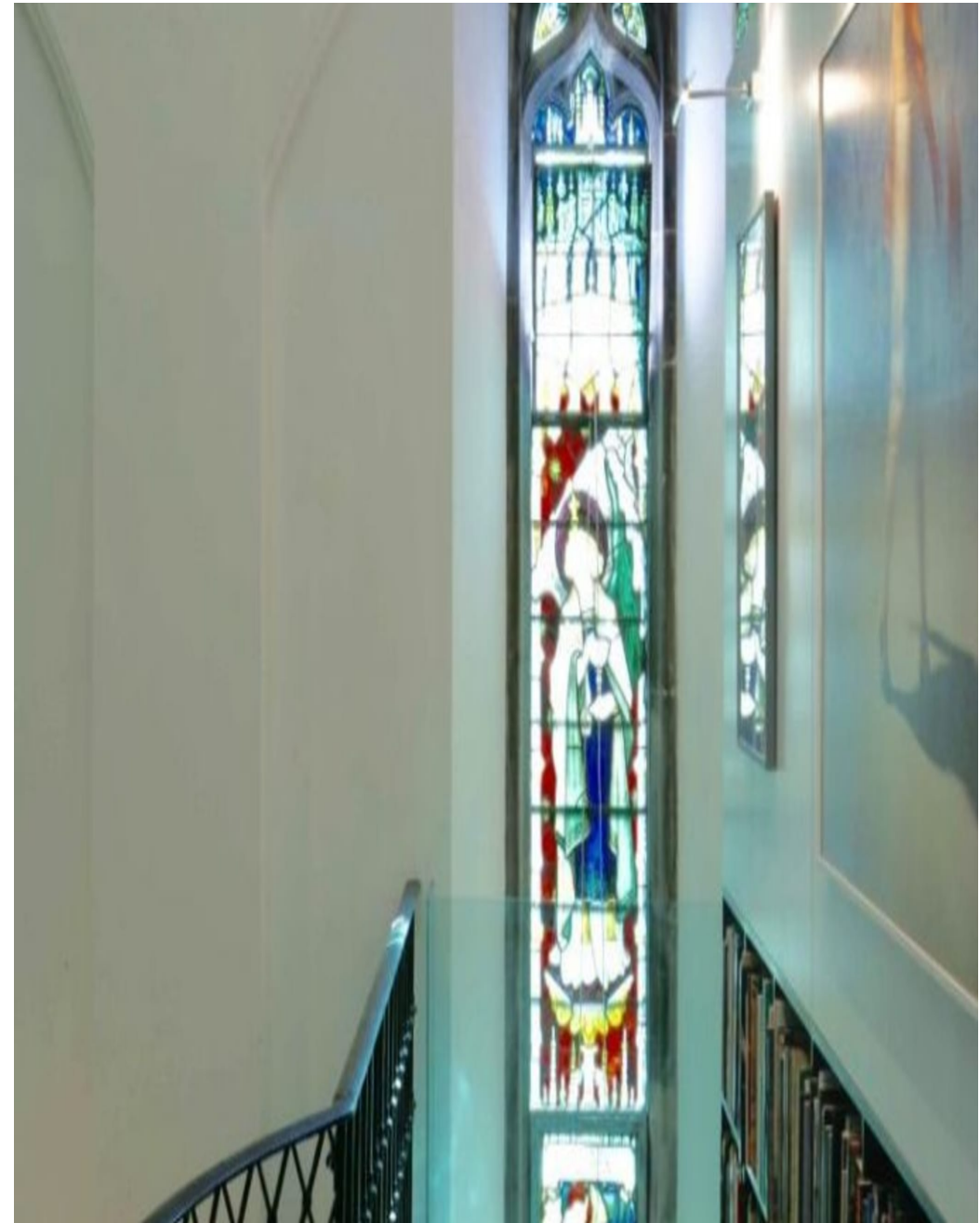
A Grade II listed building with unique historic character, converted to retain a sense of calm within its beautiful proportions and beneath the stained glass windows. Sanded timber floors enhance the light and all new timber panelling and doors use maple to contrast well with all the existing dark carved wood. A mezzanine has been added at the altar end, carefully placing the staircase to still reveal the ornate Marble floor. Upstairs on this mezzanine, carpet and a low slung sofa provide a contrast to the cool, hard surfaces below. An extra mezzanine at the other end (where the organ loft had been) allows for a small bedroom, a study, a gallery library,

**CAROL HAYES**  
**MANAGEMENT**

020 7482 1555

[www.carolhayesmanagement.co.uk](http://www.carolhayesmanagement.co.uk)





## Converted Chapel in Camberwell

A Grade II listed building with unique historic character, converted to retain a sense of calm within its beautiful proportions and beneath the stained glass windows. Sanded timber floors enhance the light and all new timber panelling and doors use maple to contrast well with all the existing dark carved wood. A mezzanine has been added at the altar end, carefully placing the staircase to still reveal the ornate Marble floor. Upstairs on this mezzanine, carpet and a low slung sofa provide a contrast to the cool, hard surfaces below. An extra mezzanine at the other end (where the organ loft had been) allows for a small bedroom, a study, a gallery library,

**CAROLHAYES**  
MANAGEMENT

020 7482 1555

[www.carolhayesmanagement.co.uk](http://www.carolhayesmanagement.co.uk)





## Converted Chapel in Camberwell

A Grade II listed building with unique historic character, converted to retain a sense of calm within its beautiful proportions and beneath the stained glass windows. Sanded timber floors enhance the light and all new timber panelling and doors use maple to contrast well with all the existing dark carved wood. A mezzanine has been added at the altar end, carefully placing the staircase to still reveal the ornate Marble floor. Upstairs on this mezzanine, carpet and a low slung sofa provide a contrast to the cool, hard surfaces below. An extra mezzanine at the other end (where the organ loft had been) allows for a small bedroom, a study, a gallery library,

**CAROLHAYES**  
MANAGEMENT

020 7482 1555

[www.carolhayesmanagement.co.uk](http://www.carolhayesmanagement.co.uk)



## Converted Chapel in Camberwell

A Grade II listed building with unique historic character, converted to retain a sense of calm within its beautiful proportions and beneath the stained glass windows. Sanded timber floors enhance the light and all new timber panelling and doors use maple to contrast well with all the existing dark carved wood. A mezzanine has been added at the altar end, carefully placing the staircase to still reveal the ornate Marble floor. Upstairs on this mezzanine, carpet and a low slung sofa provide a contrast to the cool, hard surfaces below. An extra mezzanine at the other end (where the organ loft had been) allows for a small bedroom, a study, a gallery library,

**CAROL HAYES**  
MANAGEMENT

020 7482 1555

[www.carolhayesmanagement.co.uk](http://www.carolhayesmanagement.co.uk)





## Converted Chapel in Camberwell

A Grade II listed building with unique historic character, converted to retain a sense of calm within its beautiful proportions and beneath the stained glass windows. Sanded timber floors enhance the light and all new timber panelling and doors use maple to contrast well with all the existing dark carved wood. A mezzanine has been added at the altar end, carefully placing the staircase to still reveal the ornate Marble floor. Upstairs on this mezzanine, carpet and a low slung sofa provide a contrast to the cool, hard surfaces below. An extra mezzanine at the other end (where the organ loft had been) allows for a small bedroom, a study, a gallery library,

**CAROLHAYES  
MANAGEMENT**

020 7482 1555

[www.carolhayesmanagement.co.uk](http://www.carolhayesmanagement.co.uk)



## Converted Chapel in Camberwell

A Grade II listed building with unique historic character, converted to retain a sense of calm within its beautiful proportions and beneath the stained glass windows. Sanded timber floors enhance the light and all new timber panelling and doors use maple to contrast well with all the existing dark carved wood. A mezzanine has been added at the altar end, carefully placing the staircase to still reveal the ornate Marble floor. Upstairs on this mezzanine, carpet and a low slung sofa provide a contrast to the cool, hard surfaces below. An extra mezzanine at the other end (where the organ loft had been) allows for a small bedroom, a study, a gallery library,

**CAROL HAYES**  
MANAGEMENT

020 7482 1555

[www.carolhayesmanagement.co.uk](http://www.carolhayesmanagement.co.uk)





## Converted Chapel in Camberwell

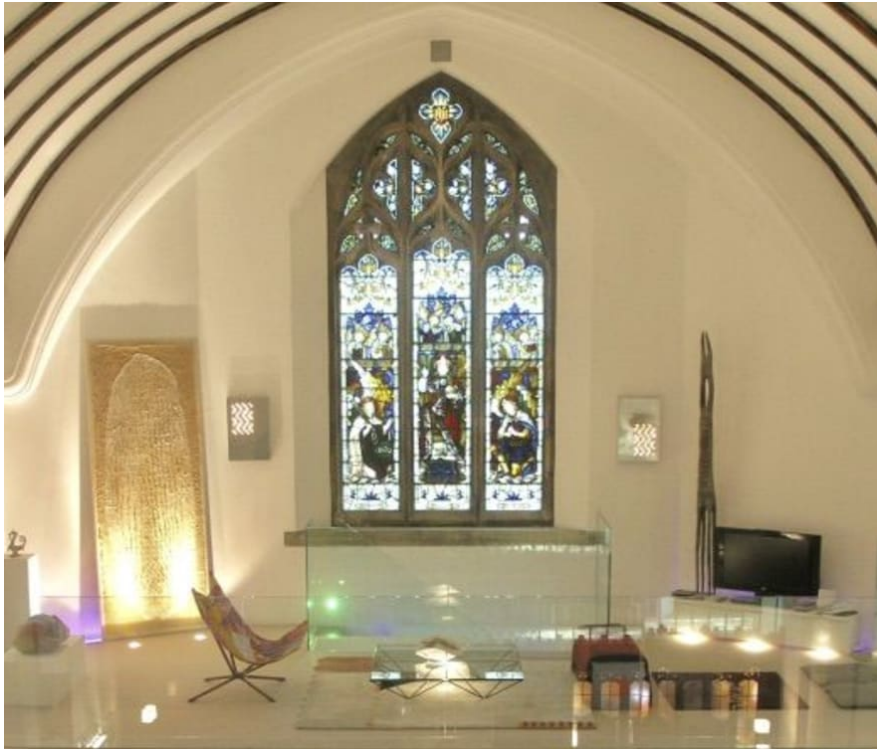
A Grade II listed building with unique historic character, converted to retain a sense of calm within its beautiful proportions and beneath the stained glass windows. Sanded timber floors enhance the light and all new timber panelling and doors use maple to contrast well with all the existing dark carved wood. A mezzanine has been added at the altar end, carefully placing the staircase to still reveal the ornate Marble floor. Upstairs on this mezzanine, carpet and a low slung sofa provide a contrast to the cool, hard surfaces below. An extra mezzanine at the other end (where the organ loft had been) allows for a small bedroom, a study, a gallery library,

**CAROLHAYES  
MANAGEMENT**

020 7482 1555

[www.carolhayesmanagement.co.uk](http://www.carolhayesmanagement.co.uk)





## Converted Chapel in Camberwell

A Grade II listed building with unique historic character, converted to retain a sense of calm within its beautiful proportions and beneath the stained glass windows. Sanded timber floors enhance the light and all new timber panelling and doors use maple to contrast well with all the existing dark carved wood. A mezzanine has been added at the altar end, carefully placing the staircase to still reveal the ornate Marble floor. Upstairs on this mezzanine, carpet and a low slung sofa provide a contrast to the cool, hard surfaces below. An extra mezzanine at the other end (where the organ loft had been) allows for a small bedroom, a study, a gallery library,

**CAROL HAYES**  
MANAGEMENT

020 7482 1555

[www.carolhayesmanagement.co.uk](http://www.carolhayesmanagement.co.uk)



## Converted Chapel in Camberwell

A Grade II listed building with unique historic character, converted to retain a sense of calm within its beautiful proportions and beneath the stained glass windows. Sanded timber floors enhance the light and all new timber panelling and doors use maple to contrast well with all the existing dark carved wood. A mezzanine has been added at the altar end, carefully placing the staircase to still reveal the ornate Marble floor. Upstairs on this mezzanine, carpet and a low slung sofa provide a contrast to the cool, hard surfaces below. An extra mezzanine at the other end (where the organ loft had been) allows for a small bedroom, a study, a gallery library,

**CAROL HAYES**  
**MANAGEMENT**

020 7482 1555

[www.carolhayesmanagement.co.uk](http://www.carolhayesmanagement.co.uk)





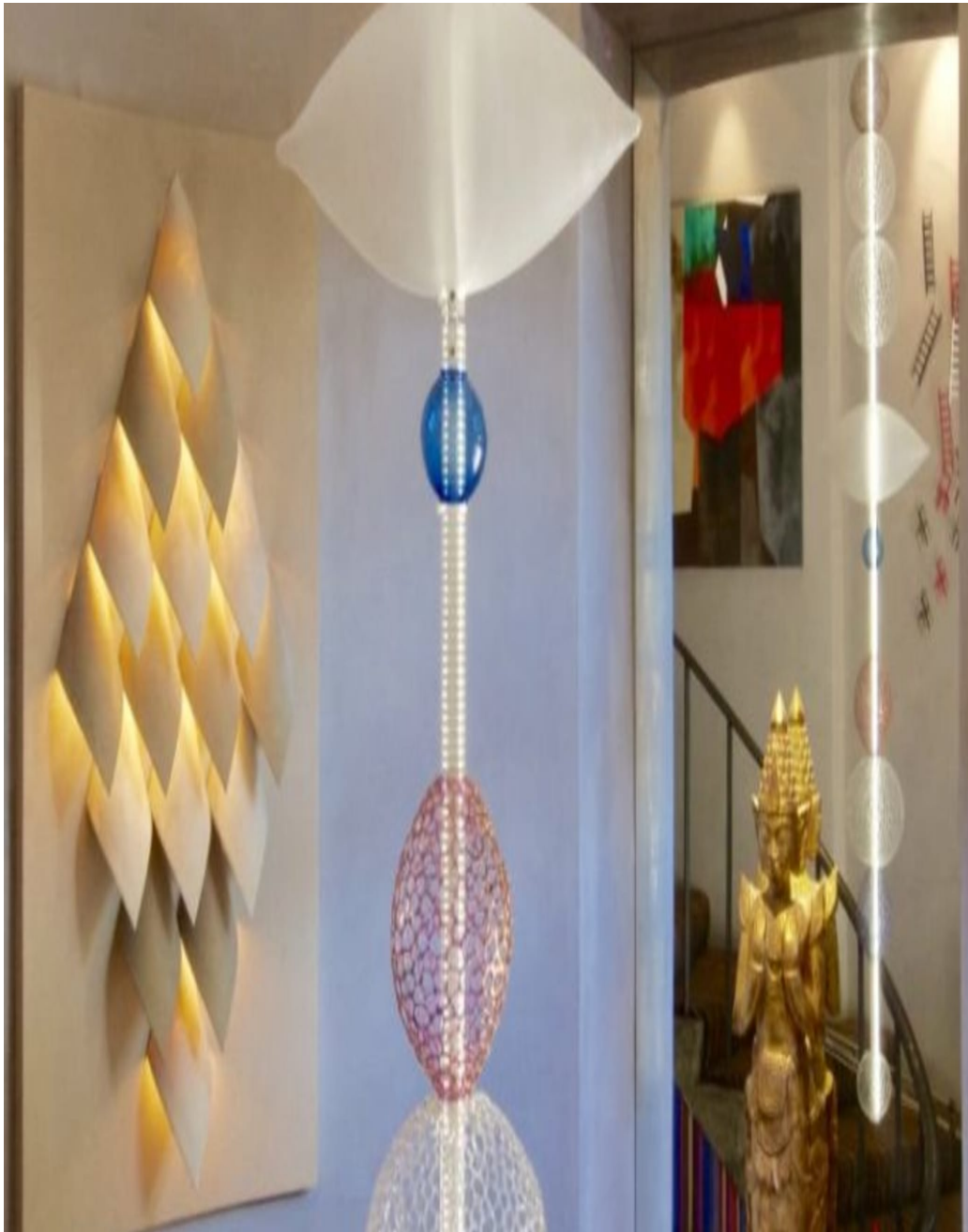
## Converted Chapel in Camberwell

A Grade II listed building with unique historic character, converted to retain a sense of calm within its beautiful proportions and beneath the stained glass windows. Sanded timber floors enhance the light and all new timber panelling and doors use maple to contrast well with all the existing dark carved wood. A mezzanine has been added at the altar end, carefully placing the staircase to still reveal the ornate Marble floor. Upstairs on this mezzanine, carpet and a low slung sofa provide a contrast to the cool, hard surfaces below. An extra mezzanine at the other end (where the organ loft had been) allows for a small bedroom, a study, a gallery library,

**CAROLHAYES  
MANAGEMENT**

020 7482 1555

[www.carolhayesmanagement.co.uk](http://www.carolhayesmanagement.co.uk)



## Converted Chapel in Camberwell

A Grade II listed building with unique historic character, converted to retain a sense of calm within its beautiful proportions and beneath the stained glass windows. Sanded timber floors enhance the light and all new timber panelling and doors use maple to contrast well with all the existing dark carved wood. A mezzanine has been added at the altar end, carefully placing the staircase to still reveal the ornate Marble floor. Upstairs on this mezzanine, carpet and a low slung sofa provide a contrast to the cool, hard surfaces below. An extra mezzanine at the other end (where the organ loft had been) allows for a small bedroom, a study, a gallery library,

**CAROLHAYES  
MANAGEMENT**

020 7482 1555

[www.carolhayesmanagement.co.uk](http://www.carolhayesmanagement.co.uk)





## Converted Chapel in Camberwell

A Grade II listed building with unique historic character, converted to retain a sense of calm within its beautiful proportions and beneath the stained glass windows. Sanded timber floors enhance the light and all new timber panelling and doors use maple to contrast well with all the existing dark carved wood. A mezzanine has been added at the altar end, carefully placing the staircase to still reveal the ornate Marble floor. Upstairs on this mezzanine, carpet and a low slung sofa provide a contrast to the cool, hard surfaces below. An extra mezzanine at the other end (where the organ loft had been) allows for a small bedroom, a study, a gallery library,

**CAROL HAYES  
MANAGEMENT**

020 7482 1555

[www.carolhayesmanagement.co.uk](http://www.carolhayesmanagement.co.uk)



## Converted Chapel in Camberwell

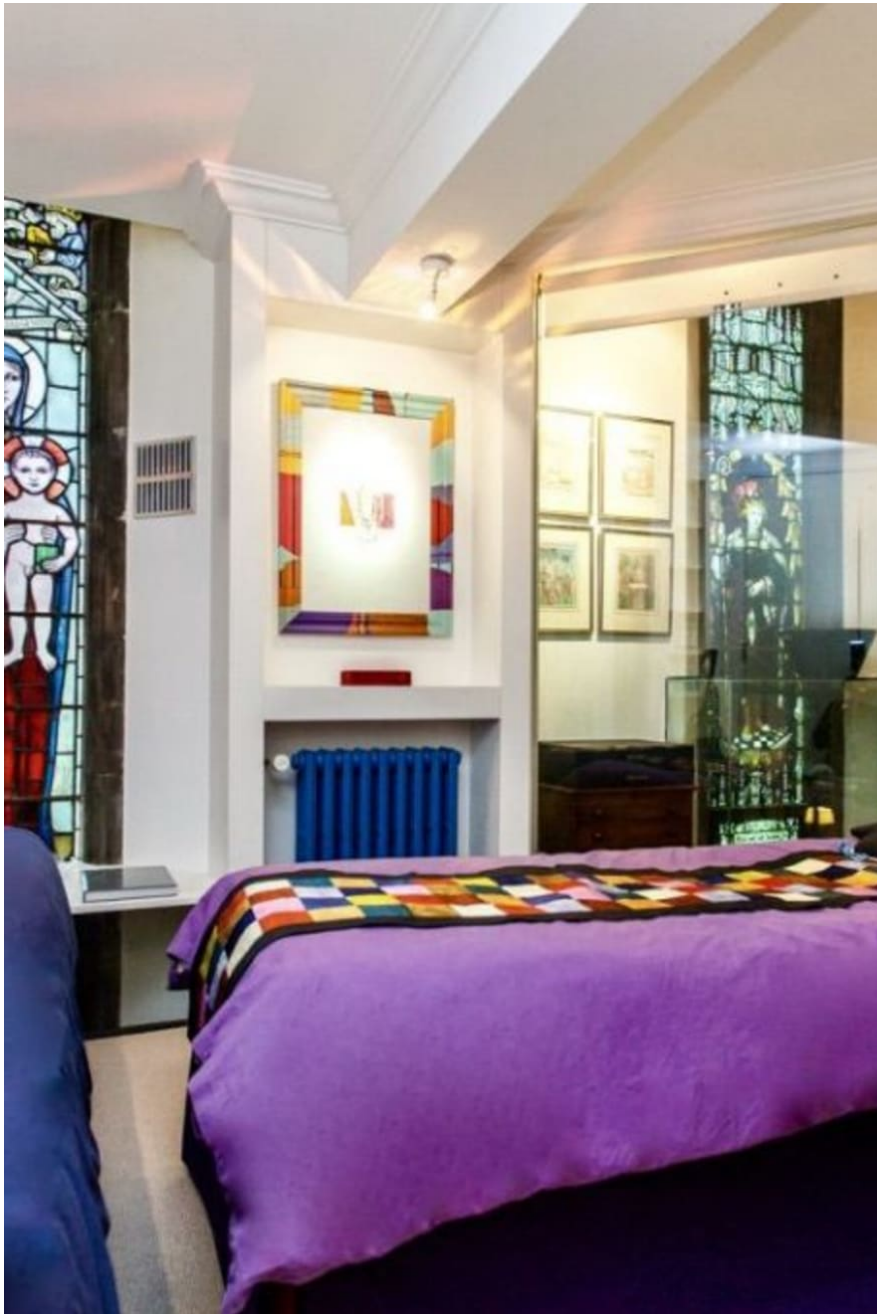
A Grade II listed building with unique historic character, converted to retain a sense of calm within its beautiful proportions and beneath the stained glass windows. Sanded timber floors enhance the light and all new timber panelling and doors use maple to contrast well with all the existing dark carved wood. A mezzanine has been added at the altar end, carefully placing the staircase to still reveal the ornate Marble floor. Upstairs on this mezzanine, carpet and a low slung sofa provide a contrast to the cool, hard surfaces below. An extra mezzanine at the other end (where the organ loft had been) allows for a small bedroom, a study, a gallery library,

**CAROL HAYES**  
**MANAGEMENT**

020 7482 1555

[www.carolhayesmanagement.co.uk](http://www.carolhayesmanagement.co.uk)





## Converted Chapel in Camberwell

A Grade II listed building with unique historic character, converted to retain a sense of calm within its beautiful proportions and beneath the stained glass windows. Sanded timber floors enhance the light and all new timber panelling and doors use maple to contrast well with all the existing dark carved wood. A mezzanine has been added at the altar end, carefully placing the staircase to still reveal the ornate Marble floor. Upstairs on this mezzanine, carpet and a low slung sofa provide a contrast to the cool, hard surfaces below. An extra mezzanine at the other end (where the organ loft had been) allows for a small bedroom, a study, a gallery library,

**CAROLHAYES**  
**MANAGEMENT**

020 7482 1555

[www.carolhayesmanagement.co.uk](http://www.carolhayesmanagement.co.uk)



## Converted Chapel in Camberwell

A Grade II listed building with unique historic character, converted to retain a sense of calm within its beautiful proportions and beneath the stained glass windows. Sanded timber floors enhance the light and all new timber panelling and doors use maple to contrast well with all the existing dark carved wood. A mezzanine has been added at the altar end, carefully placing the staircase to still reveal the ornate Marble floor. Upstairs on this mezzanine, carpet and a low slung sofa provide a contrast to the cool, hard surfaces below. An extra mezzanine at the other end (where the organ loft had been) allows for a small bedroom, a study, a gallery library,

**CAROLHAYES**  
MANAGEMENT

020 7482 1555

[www.carolhayesmanagement.co.uk](http://www.carolhayesmanagement.co.uk)





## Converted Chapel in Camberwell

A Grade II listed building with unique historic character, converted to retain a sense of calm within its beautiful proportions and beneath the stained glass windows. Sanded timber floors enhance the light and all new timber panelling and doors use maple to contrast well with all the existing dark carved wood. A mezzanine has been added at the altar end, carefully placing the staircase to still reveal the ornate Marble floor. Upstairs on this mezzanine, carpet and a low slung sofa provide a contrast to the cool, hard surfaces below. An extra mezzanine at the other end (where the organ loft had been) allows for a small bedroom, a study, a gallery library,

**CAROLHAYES  
MANAGEMENT**

020 7482 1555

[www.carolhayesmanagement.co.uk](http://www.carolhayesmanagement.co.uk)



## Converted Chapel in Camberwell

A Grade II listed building with unique historic character, converted to retain a sense of calm within its beautiful proportions and beneath the stained glass windows. Sanded timber floors enhance the light and all new timber panelling and doors use maple to contrast well with all the existing dark carved wood. A mezzanine has been added at the altar end, carefully placing the staircase to still reveal the ornate Marble floor. Upstairs on this mezzanine, carpet and a low slung sofa provide a contrast to the cool, hard surfaces below. An extra mezzanine at the other end (where the organ loft had been) allows for a small bedroom, a study, a gallery library,

**CAROL HAYES**  
MANAGEMENT

020 7482 1555

[www.carolhayesmanagement.co.uk](http://www.carolhayesmanagement.co.uk)





## Converted Chapel in Camberwell

A Grade II listed building with unique historic character, converted to retain a sense of calm within its beautiful proportions and beneath the stained glass windows. Sanded timber floors enhance the light and all new timber panelling and doors use maple to contrast well with all the existing dark carved wood. A mezzanine has been added at the altar end, carefully placing the staircase to still reveal the ornate Marble floor. Upstairs on this mezzanine, carpet and a low slung sofa provide a contrast to the cool, hard surfaces below. An extra mezzanine at the other end (where the organ loft had been) allows for a small bedroom, a study, a gallery library,

**CAROL HAYES**  
MANAGEMENT

020 7482 1555

[www.carolhayesmanagement.co.uk](http://www.carolhayesmanagement.co.uk)



## Converted Chapel in Camberwell

A Grade II listed building with unique historic character, converted to retain a sense of calm within its beautiful proportions and beneath the stained glass windows. Sanded timber floors enhance the light and all new timber panelling and doors use maple to contrast well with all the existing dark carved wood. A mezzanine has been added at the altar end, carefully placing the staircase to still reveal the ornate Marble floor. Upstairs on this mezzanine, carpet and a low slung sofa provide a contrast to the cool, hard surfaces below. An extra mezzanine at the other end (where the organ loft had been) allows for a small bedroom, a study, a gallery library,

**CAROL HAYES**  
MANAGEMENT

020 7482 1555

[www.carolhayesmanagement.co.uk](http://www.carolhayesmanagement.co.uk)





## Converted Chapel in Camberwell

A Grade II listed building with unique historic character, converted to retain a sense of calm within its beautiful proportions and beneath the stained glass windows. Sanded timber floors enhance the light and all new timber panelling and doors use maple to contrast well with all the existing dark carved wood. A mezzanine has been added at the altar end, carefully placing the staircase to still reveal the ornate Marble floor. Upstairs on this mezzanine, carpet and a low slung sofa provide a contrast to the cool, hard surfaces below. An extra mezzanine at the other end (where the organ loft had been) allows for a small bedroom, a study, a gallery library,

**CAROLHAYES**  
**MANAGEMENT**

020 7482 1555

[www.carolhayesmanagement.co.uk](http://www.carolhayesmanagement.co.uk)



## Converted Chapel in Camberwell

A Grade II listed building with unique historic character, converted to retain a sense of calm within its beautiful proportions and beneath the stained glass windows. Sanded timber floors enhance the light and all new timber panelling and doors use maple to contrast well with all the existing dark carved wood. A mezzanine has been added at the altar end, carefully placing the staircase to still reveal the ornate Marble floor. Upstairs on this mezzanine, carpet and a low slung sofa provide a contrast to the cool, hard surfaces below. An extra mezzanine at the other end (where the organ loft had been) allows for a small bedroom, a study, a gallery library,

**CAROLHAYES**  
**MANAGEMENT**

020 7482 1555

[www.carolhayesmanagement.co.uk](http://www.carolhayesmanagement.co.uk)





## Converted Chapel in Camberwell

A Grade II listed building with unique historic character, converted to retain a sense of calm within its beautiful proportions and beneath the stained glass windows. Sanded timber floors enhance the light and all new timber panelling and doors use maple to contrast well with all the existing dark carved wood. A mezzanine has been added at the altar end, carefully placing the staircase to still reveal the ornate Marble floor. Upstairs on this mezzanine, carpet and a low slung sofa provide a contrast to the cool, hard surfaces below. An extra mezzanine at the other end (where the organ loft had been) allows for a small bedroom, a study, a gallery library,

**CAROLHAYES  
MANAGEMENT**

020 7482 1555

[www.carolhayesmanagement.co.uk](http://www.carolhayesmanagement.co.uk)



## Converted Chapel in Camberwell

A Grade II listed building with unique historic character, converted to retain a sense of calm within its beautiful proportions and beneath the stained glass windows. Sanded timber floors enhance the light and all new timber panelling and doors use maple to contrast well with all the existing dark carved wood. A mezzanine has been added at the altar end, carefully placing the staircase to still reveal the ornate Marble floor. Upstairs on this mezzanine, carpet and a low slung sofa provide a contrast to the cool, hard surfaces below. An extra mezzanine at the other end (where the organ loft had been) allows for a small bedroom, a study, a gallery library,

**CAROLHAYES  
MANAGEMENT**

020 7482 1555

[www.carolhayesmanagement.co.uk](http://www.carolhayesmanagement.co.uk)





## Converted Chapel in Camberwell

A Grade II listed building with unique historic character, converted to retain a sense of calm within its beautiful proportions and beneath the stained glass windows. Sanded timber floors enhance the light and all new timber panelling and doors use maple to contrast well with all the existing dark carved wood. A mezzanine has been added at the altar end, carefully placing the staircase to still reveal the ornate Marble floor. Upstairs on this mezzanine, carpet and a low slung sofa provide a contrast to the cool, hard surfaces below. An extra mezzanine at the other end (where the organ loft had been) allows for a small bedroom, a study, a gallery library,

**CAROL HAYES**  
**MANAGEMENT**

020 7482 1555

[www.carolhayesmanagement.co.uk](http://www.carolhayesmanagement.co.uk)



## Converted Chapel in Camberwell

A Grade II listed building with unique historic character, converted to retain a sense of calm within its beautiful proportions and beneath the stained glass windows. Sanded timber floors enhance the light and all new timber panelling and doors use maple to contrast well with all the existing dark carved wood. A mezzanine has been added at the altar end, carefully placing the staircase to still reveal the ornate Marble floor. Upstairs on this mezzanine, carpet and a low slung sofa provide a contrast to the cool, hard surfaces below. An extra mezzanine at the other end (where the organ loft had been) allows for a small bedroom, a study, a gallery library,

**CAROL HAYES**  
MANAGEMENT

020 7482 1555

[www.carolhayesmanagement.co.uk](http://www.carolhayesmanagement.co.uk)