

# Burhill Cottage KT12

A four bedroom, characterful period property set on an acre of mature garden. The house backs on the the 5th hole of the prestigious Burhill Park Golf Club and comes complete with an outdoor swimming pool, pool house and separate one bedroom annex. The main house consists of four double bedrooms, four bathrooms, a large kitchen breakfast room adjoined with a critical glazed conservatory. The conservatory gives triple aspect views of the garden and beyond. There is a further large living room, office and basement cinema room. The property has electronic gates to access with parking on the drive for up to 10 cars.







## Burhill Cottage KT12

A four bedroom, characterful period property set on an acre of mature garden. The house stands on the 5th hole of the prestigious Burhill Park Golf Club and comes complete with an outdoor swimming pool, pool house and separate one bedroom annex. The main house consists of four double bedrooms, four bathrooms, a large kitchen breakfast room adjoined with a critical glazed conservatory. The conservatory gives triple aspect views of the garden and beyond. There is a further large living room, office and basement cinema room. The property has electronic gates to access with parking on the drive for up to 10 cars.

**CAROL HAYES**  
MANAGEMENT

020 7482 1555

[www.carolhayesmanagement.co.uk](http://www.carolhayesmanagement.co.uk)





## Burhill Cottage KT12

A four bedroom, characterful period property set on an acre of mature garden. The house stands on the 5th hole of the prestigious Burhill Park Golf Club and comes complete with an outdoor swimming pool, pool house and separate one bedroom annex. The main house consists of four double bedrooms, four bathrooms, a large kitchen breakfast room adjoined with a critical glazed conservatory. The conservatory gives triple aspect views of the garden and beyond. There is a further large living room, office and basement cinema room. The property has electronic gates to access with parking on the drive for up to 10 cars.

**CAROL HAYES**  
MANAGEMENT

020 7482 1555

[www.carolhayesmanagement.co.uk](http://www.carolhayesmanagement.co.uk)





## Burhill Cottage KT12

A four bedroom, characterful period property set on an acre of mature garden. The house backs on to the 5th hole of the prestigious Burhill Park Golf Club and comes complete with an outdoor swimming pool, pool house and separate one bedroom annex. The main house consists of four double bedrooms, four bathrooms, a large kitchen breakfast room adjoined with a critical glazed conservatory. The conservatory gives triple aspect views of the garden and beyond. There is a further large living room, office and basement cinema room. The property has electronic gates to access with parking on the drive for up to 10 cars.

**CAROL HAYES**  
MANAGEMENT

020 7482 1555

[www.carolhayesmanagement.co.uk](http://www.carolhayesmanagement.co.uk)





## Burhill Cottage KT12

A four bedroom, characterful period property set on an acre of mature garden. The house backs on to the 5th hole of the prestigious Burhill Park Golf Club and comes complete with an outdoor swimming pool, pool house and separate one bedroom annex. The main house consists of four double bedrooms, four bathrooms, a large kitchen breakfast room adjoined with a critical glazed conservatory. The conservatory gives triple aspect views of the garden and beyond. There is a further large living room, office and basement cinema room. The property has electronic gates to access with parking on the drive for up to 10 cars.

**CAROL HAYES**  
MANAGEMENT

020 7482 1555

[www.carolhayesmanagement.co.uk](http://www.carolhayesmanagement.co.uk)





## Burhill Cottage KT12

A four bedroom, characterful period property set on an acre of mature garden. The house backs on to the 5th hole of the prestigious Burhill Park Golf Club and comes complete with an outdoor swimming pool, pool house and separate one bedroom annex. The main house consists of four double bedrooms, four bathrooms, a large kitchen breakfast room adjoined with a critical glazed conservatory. The conservatory gives triple aspect views of the garden and beyond. There is a further large living room, office and basement cinema room. The property has electronic gates to access with parking on the drive for up to 10 cars.

**CAROL HAYES**  
MANAGEMENT

020 7482 1555

[www.carolhayesmanagement.co.uk](http://www.carolhayesmanagement.co.uk)





## Burhill Cottage KT12

A four bedroom, characterful period property set on an acre of mature garden. The house backs on to the 5th hole of the prestigious Burhill Park Golf Club and comes complete with an outdoor swimming pool, pool house and separate one bedroom annex. The main house consists of four double bedrooms, four bathrooms, a large kitchen breakfast room adjoined with a critical glazed conservatory. The conservatory gives triple aspect views of the garden and beyond. There is a further large living room, office and basement cinema room. The property has electronic gates to access with parking on the drive for up to 10 cars.

**CAROL HAYES**  
MANAGEMENT

020 7482 1555

[www.carolhayesmanagement.co.uk](http://www.carolhayesmanagement.co.uk)





## Burhill Cottage KT12

A four bedroom, characterful period property set on an acre of mature garden. The house backs on to the 5th hole of the prestigious Burhill Park Golf Club and comes complete with an outdoor swimming pool, pool house and separate one bedroom annex. The main house consists of four double bedrooms, four bathrooms, a large kitchen breakfast room adjoined with a critical glazed conservatory. The conservatory gives triple aspect views of the garden and beyond. There is a further large living room, office and basement cinema room. The property has electronic gates to access with parking on the drive for up to 10 cars.

**CAROL HAYES**  
**MANAGEMENT**  
CREATIVE AND STYLE HOMES

020 7482 1555

[www.carolhayesmanagement.co.uk](http://www.carolhayesmanagement.co.uk)





## Burhill Cottage KT12

A four bedroom, characterful period property set on an acre of mature garden. The house backs on to the 5th hole of the prestigious Burhill Park Golf Club and comes complete with an outdoor swimming pool, pool house and separate one bedroom annex. The main house consists of four double bedrooms, four bathrooms, a large kitchen breakfast room adjoined with a critical glazed conservatory. The conservatory gives triple aspect views of the garden and beyond. There is a further large living room, office and basement cinema room. The property has electronic gates to access with parking on the drive for up to 10 cars.

**CAROL HAYES**  
MANAGEMENT  
CREATIVE AND AESTHETIC HOUSEHOLD

020 7482 1555

[www.carolhayesmanagement.co.uk](http://www.carolhayesmanagement.co.uk)





## Burhill Cottage KT12

A four bedroom, characterful period property set on an acre of mature garden. The house backs on to the 5th hole of the prestigious Burhill Park Golf Club and comes complete with an outdoor swimming pool, pool house and separate one bedroom annex. The main house consists of four double bedrooms, four bathrooms, a large kitchen breakfast room adjoined with a critical glazed conservatory. The conservatory gives triple aspect views of the garden and beyond. There is a further large living room, office and basement cinema room. The property has electronic gates to access with parking on the drive for up to 10 cars.

**CAROL HAYES**  
MANAGEMENT  
CREATIVE AND STYLE HOMES

020 7482 1555

[www.carolhayesmanagement.co.uk](http://www.carolhayesmanagement.co.uk)





## Burhill Cottage KT12

A four bedroom, characterful period property set on an acre of mature garden. The house backs on to the 5th hole of the prestigious Burhill Park Golf Club and comes complete with an outdoor swimming pool, pool house and separate one bedroom annex. The main house consists of four double bedrooms, four bathrooms, a large kitchen breakfast room adjoined with a critical glazed conservatory. The conservatory gives triple aspect views of the garden and beyond. There is a further large living room, office and basement cinema room. The property has electronic gates to access with parking on the drive for up to 10 cars.

**CAROL HAYES**  
MANAGEMENT

020 7482 1555

[www.carolhayesmanagement.co.uk](http://www.carolhayesmanagement.co.uk)





## Burhill Cottage KT12

A four bedroom, characterful period property set on an acre of mature garden. The house backs on to the 5th hole of the prestigious Burhill Park Golf Club and comes complete with an outdoor swimming pool, pool house and separate one bedroom annex. The main house consists of four double bedrooms, four bathrooms, a large kitchen breakfast room adjoined with a critical glazed conservatory. The conservatory gives triple aspect views of the garden and beyond. There is a further large living room, office and basement cinema room. The property has electronic gates to access with parking on the drive for up to 10 cars.

**CAROL HAYES**  
MANAGEMENT

020 7482 1555

[www.carolhayesmanagement.co.uk](http://www.carolhayesmanagement.co.uk)





## Burhill Cottage KT12

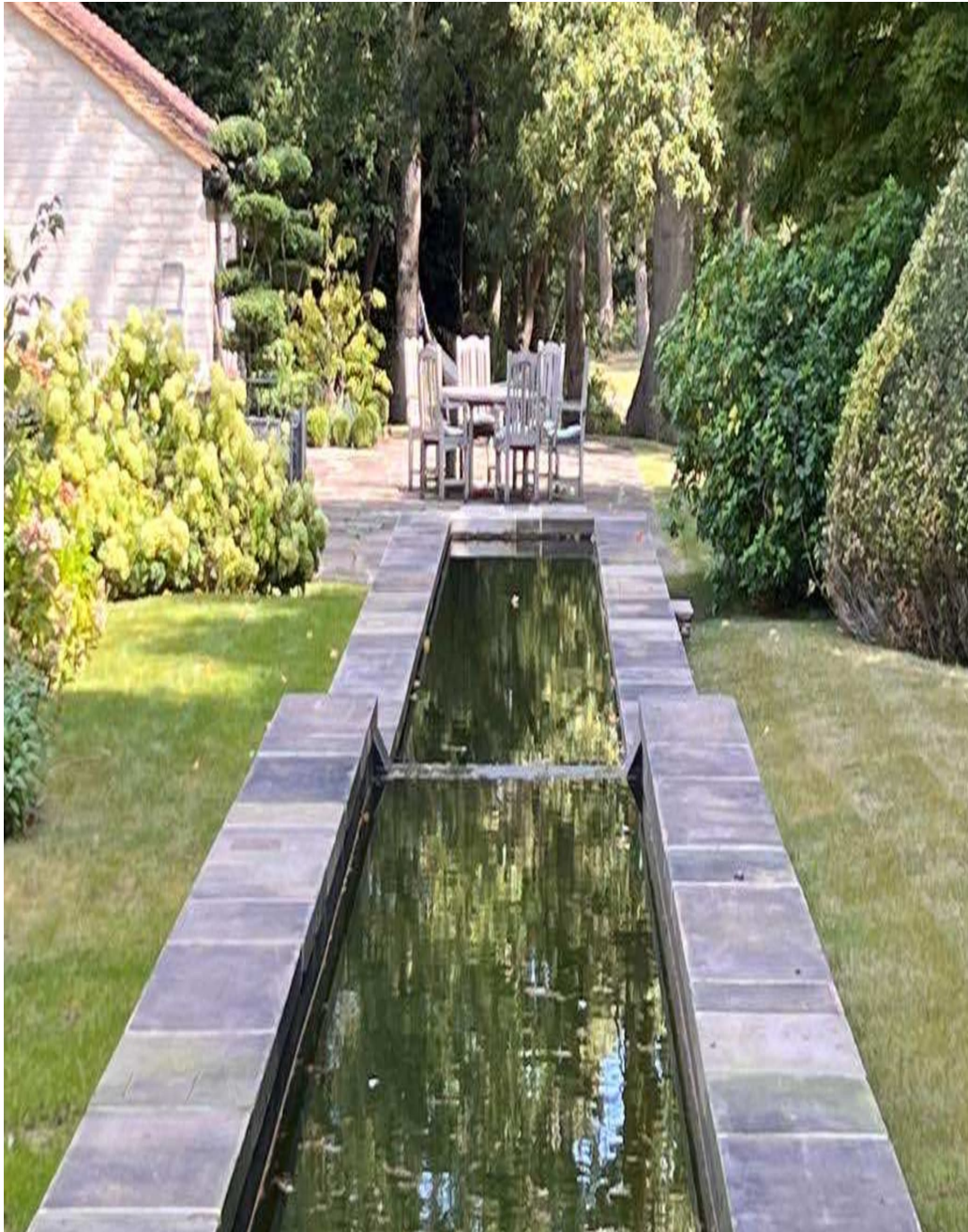
A four bedroom, characterful period property set on an acre of mature garden. The house backs on to the 5th hole of the prestigious Burhill Park Golf Club and comes complete with an outdoor swimming pool, pool house and separate one bedroom annex. The main house consists of four double bedrooms, four bathrooms, a large kitchen breakfast room adjoined with a critical glazed conservatory. The conservatory gives triple aspect views of the garden and beyond. There is a further large living room, office and basement cinema room. The property has electronic gates to access with parking on the drive for up to 10 cars.

**CAROL HAYES**  
MANAGEMENT

020 7482 1555

[www.carolhayesmanagement.co.uk](http://www.carolhayesmanagement.co.uk)





## Burhill Cottage KT12

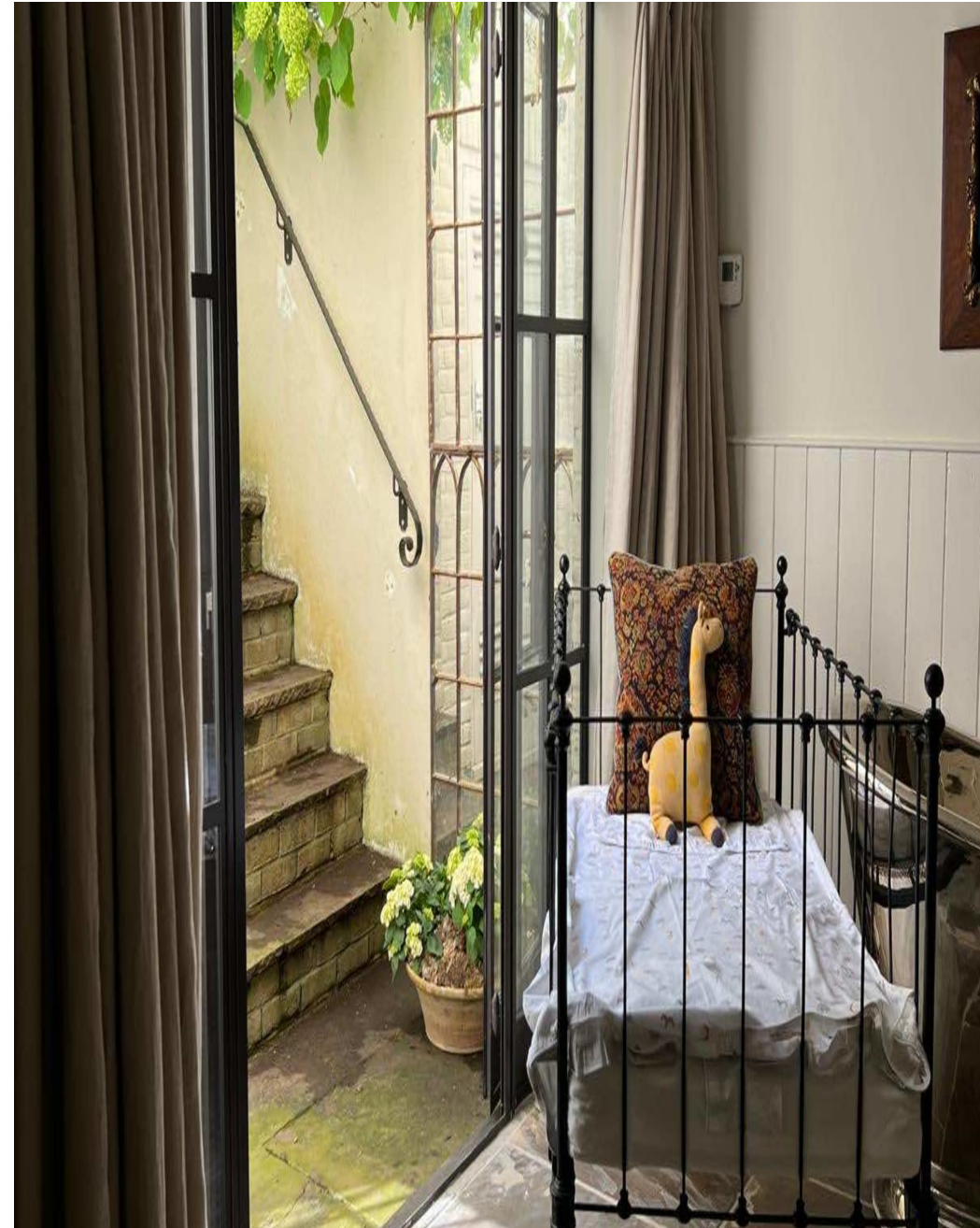
A four bedroom, characterful period property set on an acre of mature garden. The house backs on to the 5th hole of the prestigious Burhill Park Golf Club and comes complete with an outdoor swimming pool, pool house and separate one bedroom annex. The main house consists of four double bedrooms, four bathrooms, a large kitchen breakfast room adjoined with a critical glazed conservatory. The conservatory gives triple aspect views of the garden and beyond. There is a further large living room, office and basement cinema room. The property has electronic gates to access with parking on the drive for up to 10 cars.

**CAROL HAYES**  
MANAGEMENT

020 7482 1555

[www.carolhayesmanagement.co.uk](http://www.carolhayesmanagement.co.uk)





## Burhill Cottage KT12

A four bedroom, characterful period property set on an acre of mature garden. The house stands on the 5th hole of the prestigious Burhill Park Golf Club and comes complete with an outdoor swimming pool, pool house and separate one bedroom annex. The main house consists of four double bedrooms, four bathrooms, a large kitchen breakfast room adjoined with a critical glazed conservatory. The conservatory gives triple aspect views of the garden and beyond. There is a further large living room, office and basement cinema room. The property has electronic gates to access with parking on the drive for up to 10 cars.

**CAROL HAYES**  
MANAGEMENT

020 7482 1555

[www.carolhayesmanagement.co.uk](http://www.carolhayesmanagement.co.uk)





## Burhill Cottage KT12

A four bedroom, characterful period property set on an acre of mature garden. The house backs on to the 5th hole of the prestigious Burhill Park Golf Club and comes complete with an outdoor swimming pool, pool house and separate one bedroom annex. The main house consists of four double bedrooms, four bathrooms, a large kitchen breakfast room adjoined with a critical glazed conservatory. The conservatory gives triple aspect views of the garden and beyond. There is a further large living room, office and basement cinema room. The property has electronic gates to access with parking on the drive for up to 10 cars.

**CAROL HAYES**  
MANAGEMENT

020 7482 1555

[www.carolhayesmanagement.co.uk](http://www.carolhayesmanagement.co.uk)





## Burhill Cottage KT12

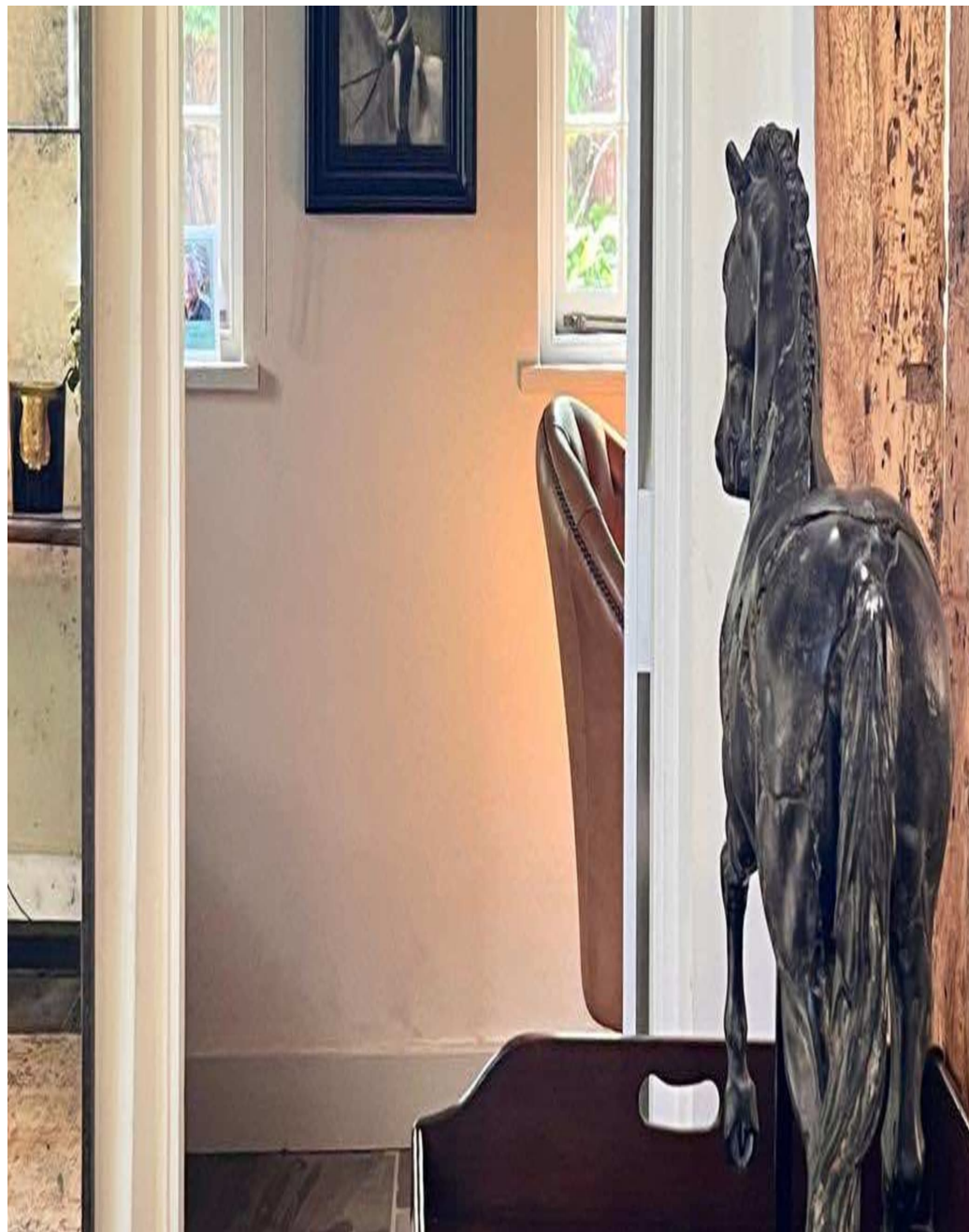
A four bedroom, characterful period property set on an acre of mature garden. The house backs on to the 5th hole of the prestigious Burhill Park Golf Club and comes complete with an outdoor swimming pool, pool house and separate one bedroom annex. The main house consists of four double bedrooms, four bathrooms, a large kitchen breakfast room adjoined with a critical glazed conservatory. The conservatory gives triple aspect views of the garden and beyond. There is a further large living room, office and basement cinema room. The property has electronic gates to access with parking on the drive for up to 10 cars.

**CAROL HAYES**  
MANAGEMENT

020 7482 1555

[www.carolhayesmanagement.co.uk](http://www.carolhayesmanagement.co.uk)





## Burhill Cottage KT12

A four bedroom, characterful period property set on an acre of mature garden. The house stands on the site of the 5th hole of the prestigious Burhill Park Golf Club and comes complete with an outdoor swimming pool, pool house and separate one bedroom annex. The main house consists of four double bedrooms, four bathrooms, a large kitchen breakfast room adjoined with a critical glazed conservatory. The conservatory gives triple aspect views of the garden and beyond. There is a further large living room, office and basement cinema room. The property has electronic gates to access with parking on the drive for up to 10 cars.

**CAROL HAYES**  
MANAGEMENT

020 7482 1555

[www.carolhayesmanagement.co.uk](http://www.carolhayesmanagement.co.uk)





## Burhill Cottage KT12

A four bedroom, characterful period property set on an acre of mature garden. The house backs on to the 5th hole of the prestigious Burhill Park Golf Club and comes complete with an outdoor swimming pool, pool house and separate one bedroom annex. The main house consists of four double bedrooms, four bathrooms, a large kitchen breakfast room adjoined with a critical glazed conservatory. The conservatory gives triple aspect views of the garden and beyond. There is a further large living room, office and basement cinema room. The property has electronic gates to access with parking on the drive for up to 10 cars.

**CAROL HAYES**  
MANAGEMENT

020 7482 1555

[www.carolhayesmanagement.co.uk](http://www.carolhayesmanagement.co.uk)





## Burhill Cottage KT12

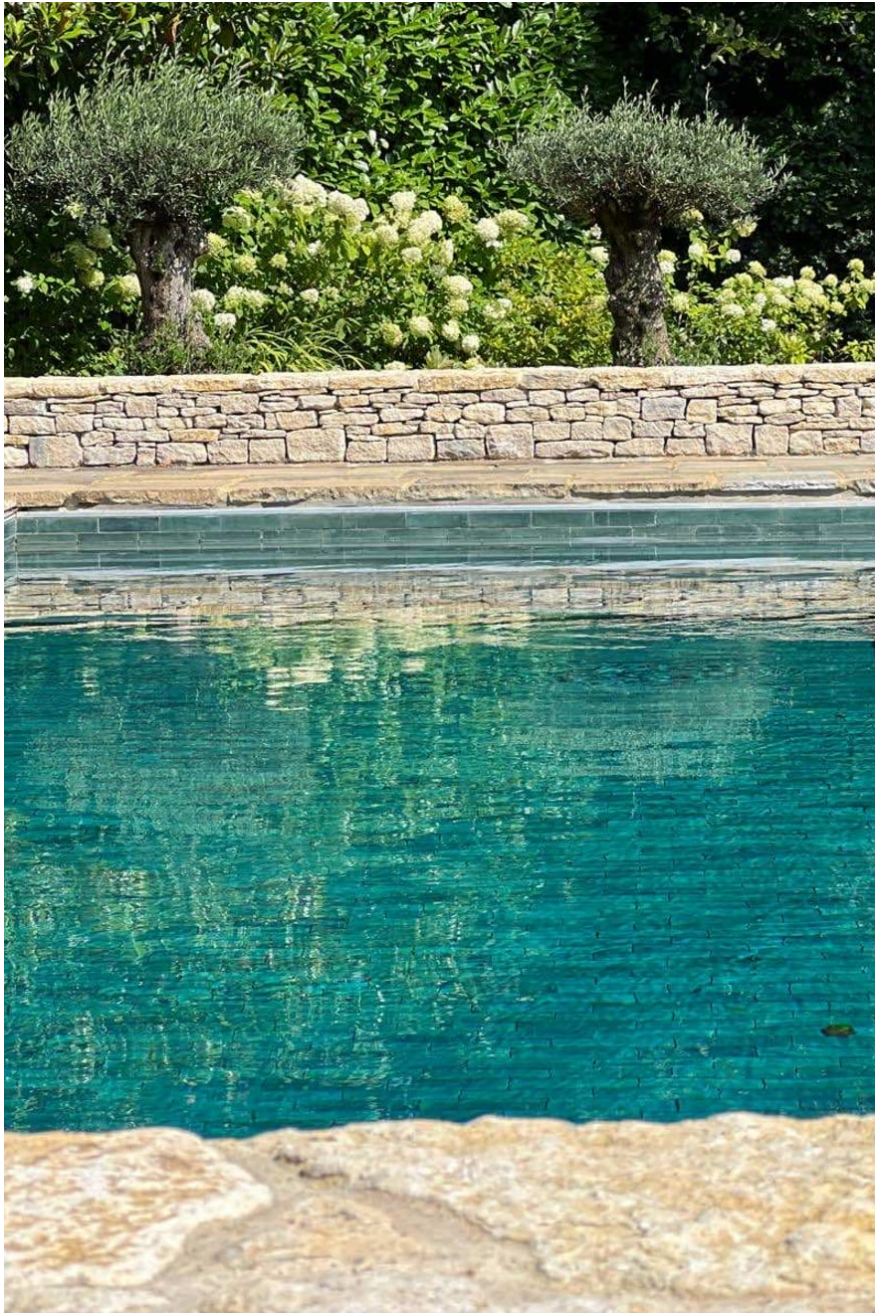
A four bedroom, characterful period property set on an acre of mature garden. The house backs on to the 5th hole of the prestigious Burhill Park Golf Club and comes complete with an outdoor swimming pool, pool house and separate one bedroom annex. The main house consists of four double bedrooms, four bathrooms, a large kitchen breakfast room adjoined with a critical glazed conservatory. The conservatory gives triple aspect views of the garden and beyond. There is a further large living room, office and basement cinema room. The property has electronic gates to access with parking on the drive for up to 10 cars.

**CAROL HAYES**  
**MANAGEMENT**  
CREATIVE AND ESTATE MANAGEMENT

020 7482 1555

[www.carolhayesmanagement.co.uk](http://www.carolhayesmanagement.co.uk)





## Burhill Cottage KT12

A four bedroom, characterful period property set on an acre of mature garden. The house backs on to the 5th hole of the prestigious Burhill Park Golf Club and comes complete with an outdoor swimming pool, pool house and separate one bedroom annex. The main house consists of four double bedrooms, four bathrooms, a large kitchen breakfast room adjoined with a critical glazed conservatory. The conservatory gives triple aspect views of the garden and beyond. There is a further large living room, office and basement cinema room. The property has electronic gates to access with parking on the drive for up to 10 cars.

**CAROL HAYES**  
MANAGEMENT

020 7482 1555

[www.carolhayesmanagement.co.uk](http://www.carolhayesmanagement.co.uk)





## Burhill Cottage KT12

A four bedroom, characterful period property set on an acre of mature garden. The house backs on to the 5th hole of the prestigious Burhill Park Golf Club and comes complete with an outdoor swimming pool, pool house and separate one bedroom annex. The main house consists of four double bedrooms, four bathrooms, a large kitchen breakfast room adjoined with a critical glazed conservatory. The conservatory gives triple aspect views of the garden and beyond. There is a further large living room, office and basement cinema room. The property has electronic gates to access with parking on the drive for up to 10 cars.

**CAROL HAYES**  
MANAGEMENT

020 7482 1555

[www.carolhayesmanagement.co.uk](http://www.carolhayesmanagement.co.uk)





## Burhill Cottage KT12

A four bedroom, characterful period property set on an acre of mature garden. The house backs on to the 5th hole of the prestigious Burhill Park Golf Club and comes complete with an outdoor swimming pool, pool house and separate one bedroom annex. The main house consists of four double bedrooms, four bathrooms, a large kitchen breakfast room adjoined with a critical glazed conservatory. The conservatory gives triple aspect views of the garden and beyond. There is a further large living room, office and basement cinema room. The property has electronic gates to access with parking on the drive for up to 10 cars.

**CAROL HAYES**  
MANAGEMENT

020 7482 1555

[www.carolhayesmanagement.co.uk](http://www.carolhayesmanagement.co.uk)





## Burhill Cottage KT12

A four bedroom, characterful period property set on an acre of mature garden. The house stands on the site of the 5th hole of the prestigious Burhill Park Golf Club and comes complete with an outdoor swimming pool, pool house and separate one bedroom annex. The main house consists of four double bedrooms, four bathrooms, a large kitchen breakfast room adjoined with a critical glazed conservatory. The conservatory gives triple aspect views of the garden and beyond. There is a further large living room, office and basement cinema room. The property has electronic gates to access with parking on the drive for up to 10 cars.

**CAROL HAYES**  
**MANAGEMENT**

020 7482 1555

[www.carolhayesmanagement.co.uk](http://www.carolhayesmanagement.co.uk)





## Burhill Cottage KT12

A four bedroom, characterful period property set on an acre of mature garden. The house backs on to the 5th hole of the prestigious Burhill Park Golf Club and comes complete with an outdoor swimming pool, pool house and separate one bedroom annex. The main house consists of four double bedrooms, four bathrooms, a large kitchen breakfast room adjoined with a critical glazed conservatory. The conservatory gives triple aspect views of the garden and beyond. There is a further large living room, office and basement cinema room. The property has electronic gates to access with parking on the drive for up to 10 cars.

**CAROL HAYES**  
MANAGEMENT

020 7482 1555

[www.carolhayesmanagement.co.uk](http://www.carolhayesmanagement.co.uk)





## Burhill Cottage KT12

A four bedroom, characterful period property set on an acre of mature garden. The house backs on to the 5th hole of the prestigious Burhill Park Golf Club and comes complete with an outdoor swimming pool, pool house and separate one bedroom annex. The main house consists of four double bedrooms, four bathrooms, a large kitchen breakfast room adjoined with a critical glazed conservatory. The conservatory gives triple aspect views of the garden and beyond. There is a further large living room, office and basement cinema room. The property has electronic gates to access with parking on the drive for up to 10 cars.

**CAROL HAYES**  
**MANAGEMENT**

020 7482 1555

[www.carolhayesmanagement.co.uk](http://www.carolhayesmanagement.co.uk)





## Burhill Cottage KT12

A four bedroom, characterful period property set on an acre of mature garden. The house backs on to the 5th hole of the prestigious Burhill Park Golf Club and comes complete with an outdoor swimming pool, pool house and separate one bedroom annex. The main house consists of four double bedrooms, four bathrooms, a large kitchen breakfast room adjoined with a critical glazed conservatory. The conservatory gives triple aspect views of the garden and beyond. There is a further large living room, office and basement cinema room. The property has electronic gates to access with parking on the drive for up to 10 cars.

**CAROL HAYES**  
**MANAGEMENT**  
CREATIVE AND ESTATE MANAGEMENT

020 7482 1555

[www.carolhayesmanagement.co.uk](http://www.carolhayesmanagement.co.uk)





## Burhill Cottage KT12

A four bedroom, characterful period property set on an acre of mature garden. The house backs on to the 5th hole of the prestigious Burhill Park Golf Club and comes complete with an outdoor swimming pool, pool house and separate one bedroom annex. The main house consists of four double bedrooms, four bathrooms, a large kitchen breakfast room adjoined with a critical glazed conservatory. The conservatory gives triple aspect views of the garden and beyond. There is a further large living room, office and basement cinema room. The property has electronic gates to access with parking on the drive for up to 10 cars.

**CAROL HAYES**  
MANAGEMENT

020 7482 1555

[www.carolhayesmanagement.co.uk](http://www.carolhayesmanagement.co.uk)





## Burhill Cottage KT12

A four bedroom, characterful period property set on an acre of mature garden. The house backs on to the 5th hole of the prestigious Burhill Park Golf Club and comes complete with an outdoor swimming pool, pool house and separate one bedroom annex. The main house consists of four double bedrooms, four bathrooms, a large kitchen breakfast room adjoined with a critical glazed conservatory. The conservatory gives triple aspect views of the garden and beyond. There is a further large living room, office and basement cinema room. The property has electronic gates to access with parking on the drive for up to 10 cars.

**CAROL HAYES**  
**MANAGEMENT**  
CREATIVE AND ESTATE MANAGEMENT

020 7482 1555

[www.carolhayesmanagement.co.uk](http://www.carolhayesmanagement.co.uk)





## Burhill Cottage KT12

A four bedroom, characterful period property set on an acre of mature garden. The house backs on to the 5th hole of the prestigious Burhill Park Golf Club and comes complete with an outdoor swimming pool, pool house and separate one bedroom annex. The main house consists of four double bedrooms, four bathrooms, a large kitchen breakfast room adjoined with a critical glazed conservatory. The conservatory gives triple aspect views of the garden and beyond. There is a further large living room, office and basement cinema room. The property has electronic gates to access with parking on the drive for up to 10 cars.

**CAROL HAYES**  
**MANAGEMENT**

020 7482 1555

[www.carolhayesmanagement.co.uk](http://www.carolhayesmanagement.co.uk)





## Burhill Cottage KT12

A four bedroom, characterful period property set on an acre of mature garden. The house backs on to the 5th hole of the prestigious Burhill Park Golf Club and comes complete with an outdoor swimming pool, pool house and separate one bedroom annex. The main house consists of four double bedrooms, four bathrooms, a large kitchen breakfast room adjoined with a critical glazed conservatory. The conservatory gives triple aspect views of the garden and beyond. There is a further large living room, office and basement cinema room. The property has electronic gates to access with parking on the drive for up to 10 cars.

**CAROL HAYES**  
MANAGEMENT

020 7482 1555

[www.carolhayesmanagement.co.uk](http://www.carolhayesmanagement.co.uk)





## Burhill Cottage KT12

A four bedroom, characterful period property set on an acre of mature garden. The house backs on to the 5th hole of the prestigious Burhill Park Golf Club and comes complete with an outdoor swimming pool, pool house and separate one bedroom annex. The main house consists of four double bedrooms, four bathrooms, a large kitchen breakfast room adjoined with a critical glazed conservatory. The conservatory gives triple aspect views of the garden and beyond. There is a further large living room, office and basement cinema room. The property has electronic gates to access with parking on the drive for up to 10 cars.

**CAROL HAYES**  
**MANAGEMENT**

020 7482 1555

[www.carolhayesmanagement.co.uk](http://www.carolhayesmanagement.co.uk)





## Burhill Cottage KT12

A four bedroom, characterful period property set on an acre of mature garden. The house backs on to the 5th hole of the prestigious Burhill Park Golf Club and comes complete with an outdoor swimming pool, pool house and separate one bedroom annex. The main house consists of four double bedrooms, four bathrooms, a large kitchen breakfast room adjoined with a critical glazed conservatory. The conservatory gives triple aspect views of the garden and beyond. There is a further large living room, office and basement cinema room. The property has electronic gates to access with parking on the drive for up to 10 cars.

**CAROL HAYES**  
**MANAGEMENT**  
CREATIVE AND ESTATE MANAGEMENT

020 7482 1555

[www.carolhayesmanagement.co.uk](http://www.carolhayesmanagement.co.uk)





## Burhill Cottage KT12

A four bedroom, characterful period property set on an acre of mature garden. The house backs on to the 5th hole of the prestigious Burhill Park Golf Club and comes complete with an outdoor swimming pool, pool house and separate one bedroom annex. The main house consists of four double bedrooms, four bathrooms, a large kitchen breakfast room adjoined with a critical glazed conservatory. The conservatory gives triple aspect views of the garden and beyond. There is a further large living room, office and basement cinema room. The property has electronic gates to access with parking on the drive for up to 10 cars.

**CAROL HAYES**  
**MANAGEMENT**  
CREATIVE AND ESTATE MANAGEMENT

020 7482 1555

[www.carolhayesmanagement.co.uk](http://www.carolhayesmanagement.co.uk)





## Burhill Cottage KT12

A four bedroom, characterful period property set on an acre of mature garden. The house backs on to the 5th hole of the prestigious Burhill Park Golf Club and comes complete with an outdoor swimming pool, pool house and separate one bedroom annex. The main house consists of four double bedrooms, four bathrooms, a large kitchen breakfast room adjoined with a critical glazed conservatory. The conservatory gives triple aspect views of the garden and beyond. There is a further large living room, office and basement cinema room. The property has electronic gates to access with parking on the drive for up to 10 cars.

**CAROL HAYES**  
MANAGEMENT

020 7482 1555

[www.carolhayesmanagement.co.uk](http://www.carolhayesmanagement.co.uk)





## Burhill Cottage KT12

A four bedroom, characterful period property set on an acre of mature garden. The house backs on to the 5th hole of the prestigious Burhill Park Golf Club and comes complete with an outdoor swimming pool, pool house and separate one bedroom annex. The main house consists of four double bedrooms, four bathrooms, a large kitchen breakfast room adjoined with a critical glazed conservatory. The conservatory gives triple aspect views of the garden and beyond. There is a further large living room, office and basement cinema room. The property has electronic gates to access with parking on the drive for up to 10 cars.

**CAROL HAYES**  
**MANAGEMENT**  
REAL ESTATE

020 7482 1555

[www.carolhayesmanagement.co.uk](http://www.carolhayesmanagement.co.uk)





## Burhill Cottage KT12

A four bedroom, characterful period property set on an acre of mature garden. The house backs on to the 5th hole of the prestigious Burhill Park Golf Club and comes complete with an outdoor swimming pool, pool house and separate one bedroom annex. The main house consists of four double bedrooms, four bathrooms, a large kitchen breakfast room adjoined with a critical glazed conservatory. The conservatory gives triple aspect views of the garden and beyond. There is a further large living room, office and basement cinema room. The property has electronic gates to access with parking on the drive for up to 10 cars.

**CAROL HAYES**  
**MANAGEMENT**

020 7482 1555

[www.carolhayesmanagement.co.uk](http://www.carolhayesmanagement.co.uk)





## Burhill Cottage KT12

A four bedroom, characterful period property set on an acre of mature garden. The house backs on to the 5th hole of the prestigious Burhill Park Golf Club and comes complete with an outdoor swimming pool, pool house and separate one bedroom annex. The main house consists of four double bedrooms, four bathrooms, a large kitchen breakfast room adjoined with a critical glazed conservatory. The conservatory gives triple aspect views of the garden and beyond. There is a further large living room, office and basement cinema room. The property has electronic gates to access with parking on the drive for up to 10 cars.

**CAROL HAYES**  
MANAGEMENT

020 7482 1555

[www.carolhayesmanagement.co.uk](http://www.carolhayesmanagement.co.uk)





## Burhill Cottage KT12

A four bedroom, characterful period property set on an acre of mature garden. The house backs on to the 5th hole of the prestigious Burhill Park Golf Club and comes complete with an outdoor swimming pool, pool house and separate one bedroom annex. The main house consists of four double bedrooms, four bathrooms, a large kitchen breakfast room adjoined with a critical glazed conservatory. The conservatory gives triple aspect views of the garden and beyond. There is a further large living room, office and basement cinema room. The property has electronic gates to access with parking on the drive for up to 10 cars.

**CAROL HAYES**  
**MANAGEMENT**  
CREATIVE AND ESTATE MANAGEMENT

020 7482 1555

[www.carolhayesmanagement.co.uk](http://www.carolhayesmanagement.co.uk)





## Burhill Cottage KT12

A four bedroom, characterful period property set on an acre of mature garden. The house backs on to the 5th hole of the prestigious Burhill Park Golf Club and comes complete with an outdoor swimming pool, pool house and separate one bedroom annex. The main house consists of four double bedrooms, four bathrooms, a large kitchen breakfast room adjoined with a critical glazed conservatory. The conservatory gives triple aspect views of the garden and beyond. There is a further large living room, office and basement cinema room. The property has electronic gates to access with parking on the drive for up to 10 cars.

**CAROL HAYES**  
**MANAGEMENT**

020 7482 1555

[www.carolhayesmanagement.co.uk](http://www.carolhayesmanagement.co.uk)





## Burhill Cottage KT12

A four bedroom, characterful period property set on an acre of mature garden. The house backs on to the 5th hole of the prestigious Burhill Park Golf Club and comes complete with an outdoor swimming pool, pool house and separate one bedroom annex. The main house consists of four double bedrooms, four bathrooms, a large kitchen breakfast room adjoined with a critical glazed conservatory. The conservatory gives triple aspect views of the garden and beyond. There is a further large living room, office and basement cinema room. The property has electronic gates to access with parking on the drive for up to 10 cars.

**CAROL HAYES**  
**MANAGEMENT**  
CREATIVE AND ESTATE MANAGEMENT

020 7482 1555

[www.carolhayesmanagement.co.uk](http://www.carolhayesmanagement.co.uk)





## Burhill Cottage KT12

A four bedroom, characterful period property set on an acre of mature garden. The house stands on the 5th hole of the prestigious Burhill Park Golf Club and comes complete with an outdoor swimming pool, pool house and separate one bedroom annex. The main house consists of four double bedrooms, four bathrooms, a large kitchen breakfast room adjoined with a critical glazed conservatory. The conservatory gives triple aspect views of the garden and beyond. There is a further large living room, office and basement cinema room. The property has electronic gates to access with parking on the drive for up to 10 cars.

**CAROL HAYES**  
MANAGEMENT

020 7482 1555

[www.carolhayesmanagement.co.uk](http://www.carolhayesmanagement.co.uk)





## Burhill Cottage KT12

A four bedroom, characterful period property set on an acre of mature garden. The house backs on to the 5th hole of the prestigious Burhill Park Golf Club and comes complete with an outdoor swimming pool, pool house and separate one bedroom annex. The main house consists of four double bedrooms, four bathrooms, a large kitchen breakfast room adjoined with a critical glazed conservatory. The conservatory gives triple aspect views of the garden and beyond. There is a further large living room, office and basement cinema room. The property has electronic gates to access with parking on the drive for up to 10 cars.

**CAROL HAYES**  
**MANAGEMENT**  
CREATING YOUR DREAM HOME

020 7482 1555

[www.carolhayesmanagement.co.uk](http://www.carolhayesmanagement.co.uk)





## Burhill Cottage KT12

A four bedroom, characterful period property set on an acre of mature garden. The house backs on to the 5th hole of the prestigious Burhill Park Golf Club and comes complete with an outdoor swimming pool, pool house and separate one bedroom annex. The main house consists of four double bedrooms, four bathrooms, a large kitchen breakfast room adjoined with a critical glazed conservatory. The conservatory gives triple aspect views of the garden and beyond. There is a further large living room, office and basement cinema room. The property has electronic gates to access with parking on the drive for up to 10 cars.

**CAROL HAYES**  
**MANAGEMENT**  
 CREATIVE AND ESTATE MANAGEMENT

020 7482 1555

[www.carolhayesmanagement.co.uk](http://www.carolhayesmanagement.co.uk)





## Burhill Cottage KT12

A four bedroom, characterful period property set on an acre of mature garden. The house backs on to the 5th hole of the prestigious Burhill Park Golf Club and comes complete with an outdoor swimming pool, pool house and separate one bedroom annex. The main house consists of four double bedrooms, four bathrooms, a large kitchen breakfast room adjoined with a critical glazed conservatory. The conservatory gives triple aspect views of the garden and beyond. There is a further large living room, office and basement cinema room. The property has electronic gates to access with parking on the drive for up to 10 cars.

**CAROL HAYES**  
**MANAGEMENT**  
RESIDENTIAL & COMMERCIAL

020 7482 1555

[www.carolhayesmanagement.co.uk](http://www.carolhayesmanagement.co.uk)