

Blackheath House SE10

This stunning mews house located in Blackheath, London, was shortlisted in the RIBA Awards 2015 and the New London Architecture Awards 2016. It has been featured in the Saturday Times Magazine, London Evening Standard & Grand Designs Magazine. The L shape accommodation overlooks or opens onto the central courtyard garden and the green roof and natural materials help it sit comfortably in its setting . Double height space to entrance, external timber venetian blinds as used in Australia, Danish plank shaped grey bricks internally and externally, Juliet balconies to bedrooms, triple track sliding glazing for maximum openings, dual aspect fire place, pivot doors, concrete floor with under floor heating, green roof, photovoltaic panels, bifold internal walls and wall bed.





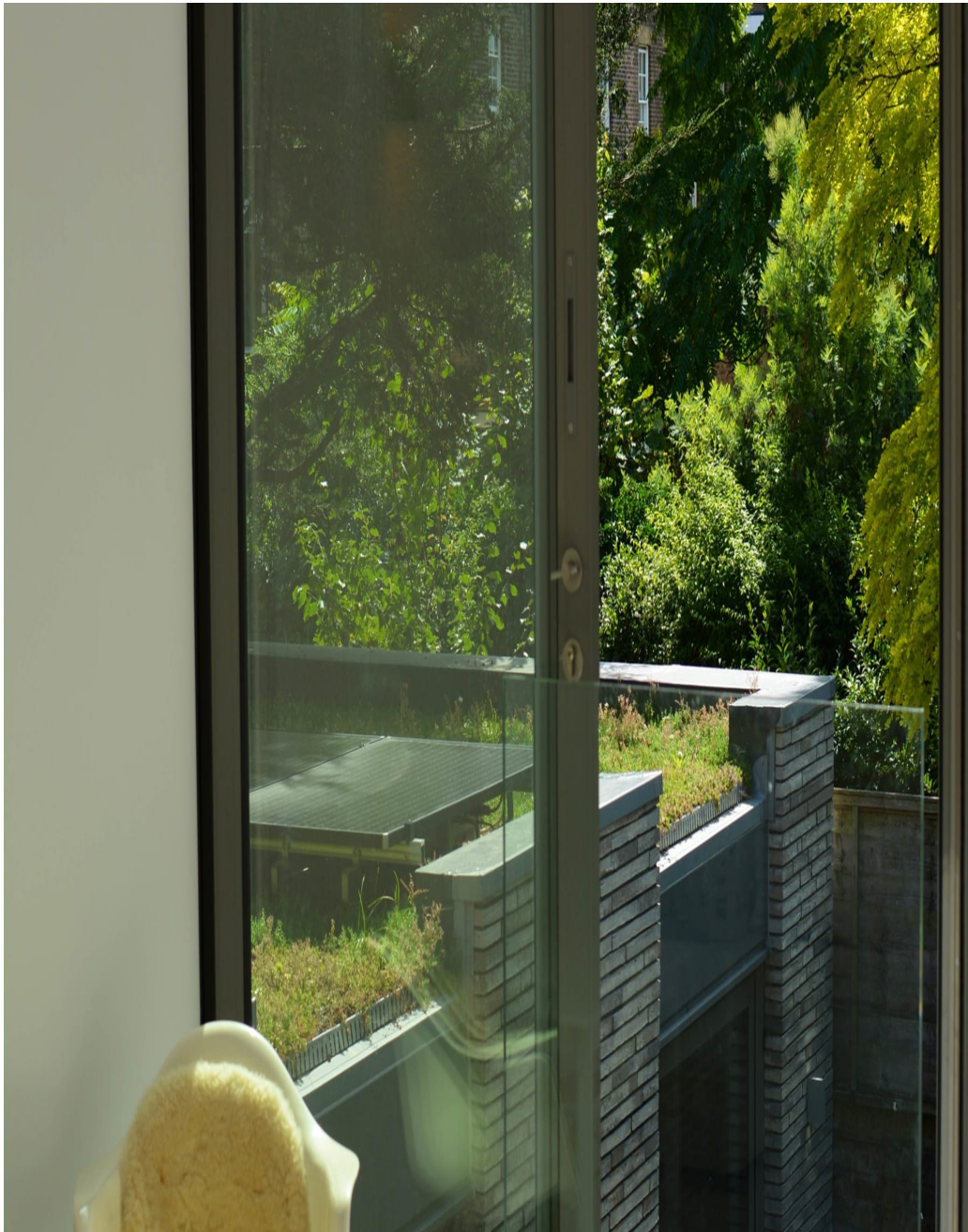
Blackheath House SE10

This stunning mews house located in Blackheath, London, was shortlisted in the RIBA Awards 2015 and the New London Architecture Awards 2016. It has been featured in the Saturday Times Magazine, London Evening Standard & Grand Designs Magazine. The L shape accommodation overlooks or opens onto the central courtyard garden and the green roof and natural materials help it sit comfortably in its setting. Double height space to entrance, external timber venetian blinds as used in Australia, Danish plank shaped grey bricks internally and externally, Juliet balconies to bedrooms, triple track sliding glazing for maximum openings,

**CAROLHAYES
MANAGEMENT**

020 7482 1555

www.carolhayesmanagement.co.uk



Blackheath House SE10

This stunning mews house located in Blackheath, London, was shortlisted in the RIBA Awards 2015 and the New London Architecture Awards 2016. It has been featured in the Saturday Times Magazine, London Evening Standard & Grand Designs Magazine. The L-shape accommodation overlooks or opens onto the central courtyard garden and the green roof and natural materials help it sit comfortably in its setting. Double height space to entrance, external timber venetian blinds as used in Australia, Danish plank shaped grey bricks internally and externally, Juliet balconies to bedrooms, triple track sliding glazing for maximum openings,

CAROL HAYES
MANAGEMENT

020 7482 1555

www.carolhayesmanagement.co.uk



Blackheath House SE10

This stunning mews house located in Blackheath, London, was shortlisted in the RIBA Awards 2015 and the New London Architecture Awards 2016. It has been featured in the Saturday Times Magazine, London Evening Standard & Grand Designs Magazine. The L shape accommodation overlooks or opens onto the central courtyard garden and the green roof and natural materials help it sit comfortably in its setting. Double height space to entrance, external timber venetian blinds as used in Australia, Danish plank shaped grey bricks internally and externally, Juliet balconies to bedrooms, triple track sliding glazing for maximum openings,

CAROL HAYES
MANAGEMENT

020 7482 1555

www.carolhayesmanagement.co.uk



Blackheath House SE10

This stunning mews house located in Blackheath, London, was shortlisted in the RIBA Awards 2015 and the New London Architecture Awards 2016. It has been featured in the Saturday Times Magazine, London Evening Standard & Grand Designs Magazine. The L-shape accommodation overlooks or opens onto the central courtyard garden and the green roof and natural materials help it sit comfortably in its setting. Double height space to entrance, external timber venetian blinds as used in Australia, Danish plank shaped grey bricks internally and externally, Juliet balconies to bedrooms, triple track sliding glazing for maximum openings,

CAROL HAYES
MANAGEMENT

020 7482 1555

www.carolhayesmanagement.co.uk



Blackheath House SE10

This stunning mews house located in Blackheath, London, was shortlisted in the RIBA Awards 2015 and the New London Architecture Awards 2016. It has been featured in the Saturday Times Magazine, London Evening Standard & Grand Designs Magazine. The L shape accommodation overlooks or opens onto the central courtyard garden and the green roof and natural materials help it sit comfortably in its setting. Double height space to entrance, external timber venetian blinds as used in Australia, Danish plank shaped grey bricks internally and externally, Juliet balconies to bedrooms, triple track sliding glazing for maximum openings,

CAROL HAYES
MANAGEMENT

020 7482 1555

www.carolhayesmanagement.co.uk



Blackheath House SE10

This stunning mews house located in Blackheath, London, was shortlisted in the RIBA Awards 2015 and the New London Architecture Awards 2016. It has been featured in the Saturday Times Magazine, London Evening Standard & Grand Designs Magazine. The L shape accommodation overlooks or opens onto the central courtyard garden and the green roof and natural materials help it sit comfortably in its setting. Double height space to entrance, external timber venetian blinds as used in Australia, Danish plank shaped grey bricks internally and externally, Juliet balconies to bedrooms, triple track sliding glazing for maximum openings,

**CAROLHAYES
MANAGEMENT**

020 7482 1555

www.carolhayesmanagement.co.uk



Blackheath House SE10

This stunning mews house located in Blackheath, London, was shortlisted in the RIBA Awards 2015 and the New London Architecture Awards 2016. It has been featured in the Saturday Times Magazine, London Evening Standard & Grand Designs Magazine. The L-shape accommodation overlooks or opens onto the central courtyard garden and the green roof and natural materials help it sit comfortably in its setting. Double height space to entrance, external timber venetian blinds as used in Australia, Danish plank shaped grey bricks internally and externally, Juliet balconies to bedrooms, triple track sliding glazing for maximum openings,

**CAROLHAYES
MANAGEMENT**

020 7482 1555

www.carolhayesmanagement.co.uk



Blackheath House SE10

This stunning mews house located in Blackheath, London, was shortlisted in the RIBA Awards 2015 and the New London Architecture Awards 2016. It has been featured in the Saturday Times Magazine, London Evening Standard & Grand Designs Magazine. The L-shape accommodation overlooks or opens onto the central courtyard garden and the green roof and natural materials help it sit comfortably in its setting. Double height space to entrance, external timber venetian blinds as used in Australia, Danish plank shaped grey bricks internally and externally, Juliet balconies to bedrooms, triple track sliding glazing for maximum openings,

CAROL HAYES
MANAGEMENT

020 7482 1555

www.carolhayesmanagement.co.uk



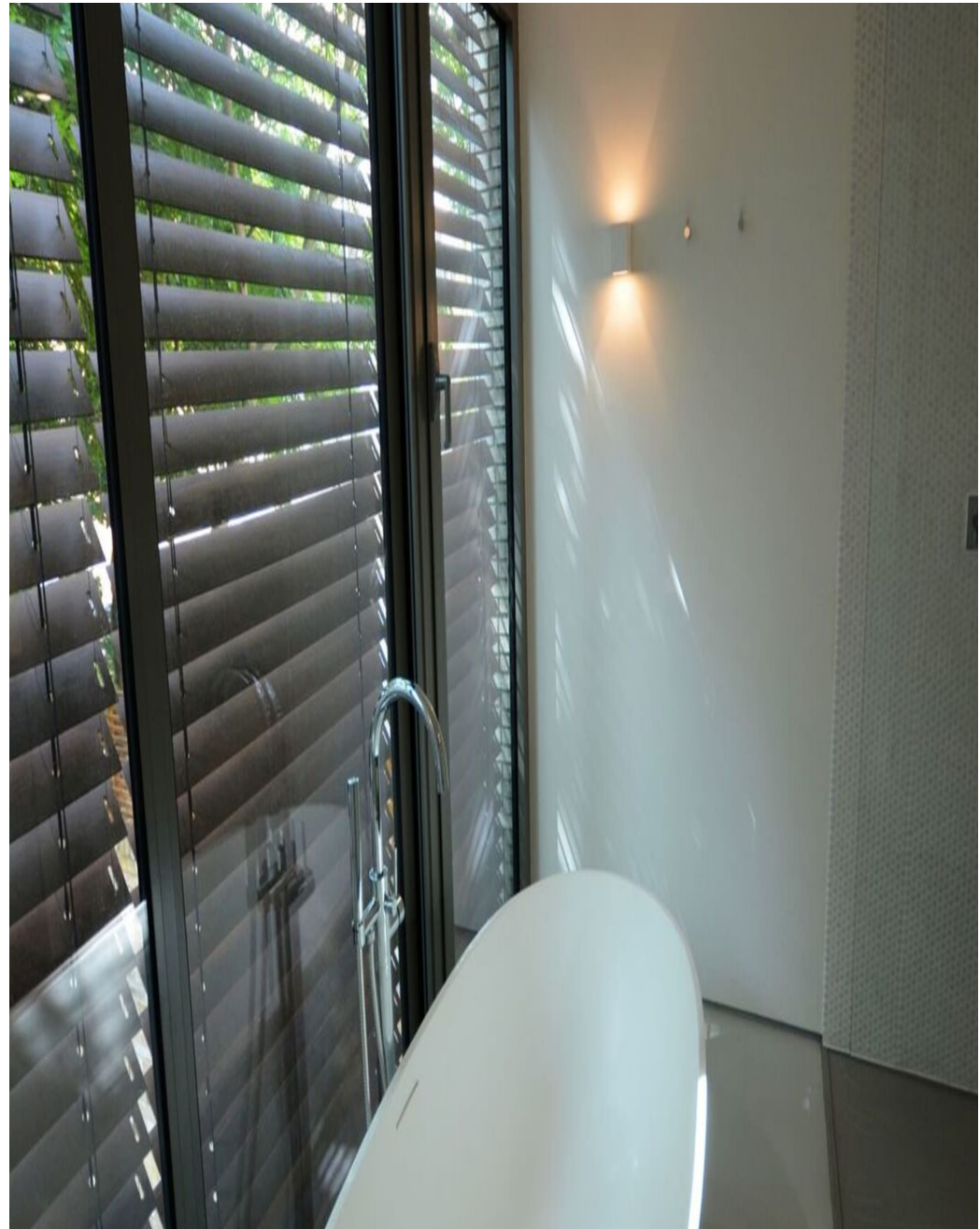
Blackheath House SE10

This stunning mews house located in Blackheath, London, was shortlisted in the RIBA Awards 2015 and the New London Architecture Awards 2016. It has been featured in the Saturday Times Magazine, London Evening Standard & Grand Designs Magazine. The L-shape accommodation overlooks or opens onto the central courtyard garden and the green roof and natural materials help it sit comfortably in its setting. Double height space to entrance, external timber venetian blinds as used in Australia, Danish plank shaped grey bricks internally and externally, Juliet balconies to bedrooms, triple track sliding glazing for maximum openings,

CAROL HAYES
MANAGEMENT

020 7482 1555

www.carolhayesmanagement.co.uk



Blackheath House SE10

This stunning mews house located in Blackheath, London, was shortlisted in the RIBA Awards 2015 and the New London Architecture Awards 2016. It has been featured in the Saturday Times Magazine, London Evening Standard & Grand Designs Magazine. The L-shape accommodation overlooks or opens onto the central courtyard garden and the green roof and natural materials help it sit comfortably in its setting. Double height space to entrance, external timber venetian blinds as used in Australia, Danish plank shaped grey bricks internally and externally, Juliet balconies to bedrooms, triple track sliding glazing for maximum openings,

CAROL HAYES
MANAGEMENT

020 7482 1555

www.carolhayesmanagement.co.uk



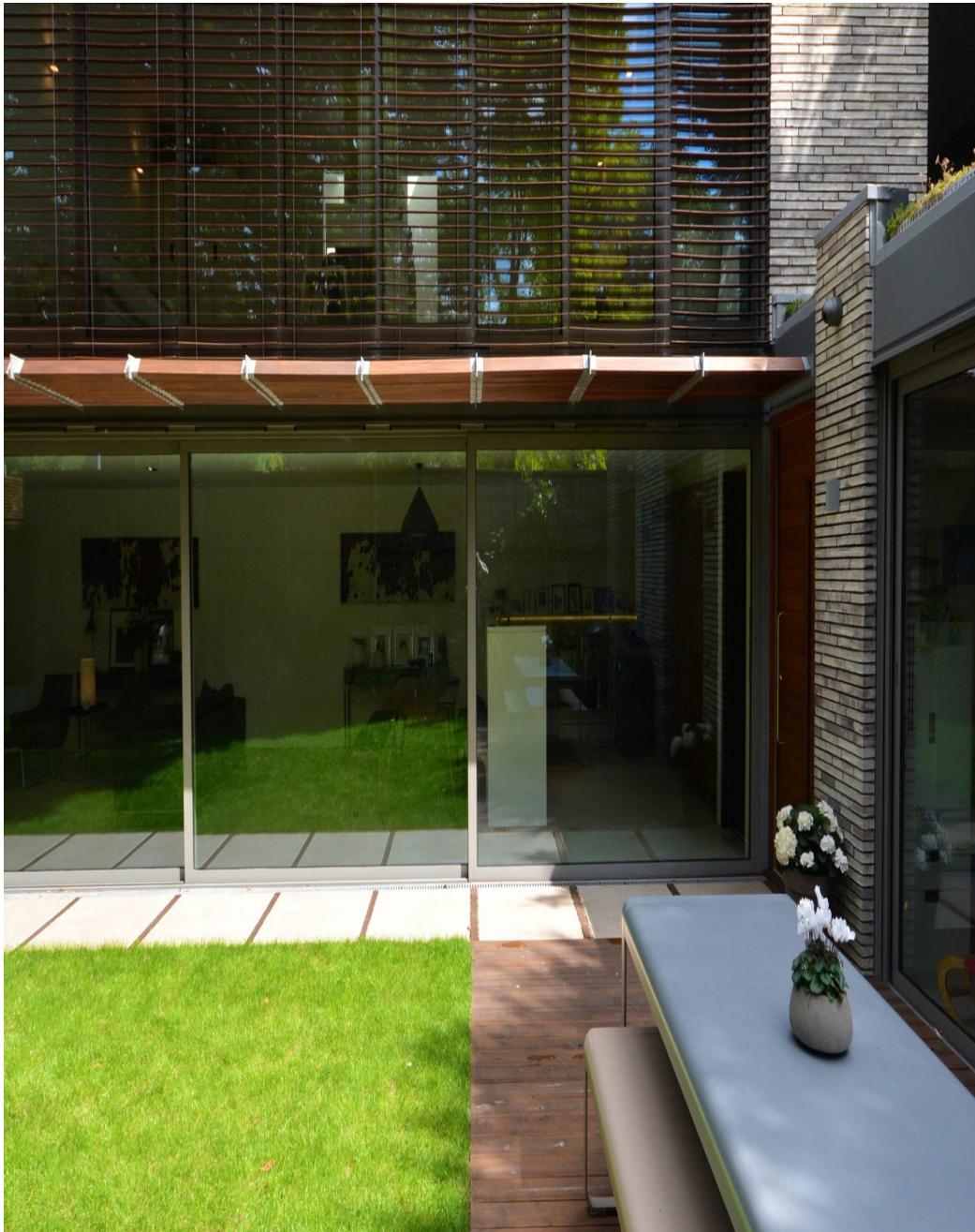
Blackheath House SE10

This stunning mews house located in Blackheath, London, was shortlisted in the RIBA Awards 2015 and the New London Architecture Awards 2016. It has been featured in the Saturday Times Magazine, London Evening Standard & Grand Designs Magazine. The L-shape accommodation overlooks or opens onto the central courtyard garden and the green roof and natural materials help it sit comfortably in its setting. Double height space to entrance, external timber venetian blinds as used in Australia, Danish plank shaped grey bricks internally and externally, Juliet balconies to bedrooms, triple track sliding glazing for maximum openings,

**CAROLHAYES
MANAGEMENT**

020 7482 1555

www.carolhayesmanagement.co.uk



Blackheath House SE10

This stunning mews house located in Blackheath, London, was shortlisted in the RIBA Awards 2015 and the New London Architecture Awards 2016. It has been featured in the Saturday Times Magazine, London Evening Standard & Grand Designs Magazine. The L-shape accommodation overlooks or opens onto the central courtyard garden and the green roof and natural materials help it sit comfortably in its setting. Double height space to entrance, external timber venetian blinds as used in Australia, Danish plank shaped grey bricks internally and externally, Juliet balconies to bedrooms, triple track sliding glazing for maximum openings,

**CAROL HAYES
MANAGEMENT**

020 7482 1555

www.carolhayesmanagement.co.uk



Blackheath House SE10

This stunning mews house located in Blackheath, London, was shortlisted in the RIBA Awards 2015 and the New London Architecture Awards 2016. It has been featured in the Saturday Times Magazine, London Evening Standard & Grand Designs Magazine. The L-shape accommodation overlooks or opens onto the central courtyard garden and the green roof and natural materials help it sit comfortably in its setting. Double height space to entrance, external timber venetian blinds as used in Australia, Danish plank shaped grey bricks internally and externally, Juliet balconies to bedrooms, triple track sliding glazing for maximum openings,

CAROL HAYES
MANAGEMENT

020 7482 1555

www.carolhayesmanagement.co.uk



Blackheath House SE10

This stunning mews house located in Blackheath, London, was shortlisted in the RIBA Awards 2015 and the New London Architecture Awards 2016. It has been featured in the Saturday Times Magazine, London Evening Standard & Grand Designs Magazine. The L-shape accommodation overlooks or opens onto the central courtyard garden and the green roof and natural materials help it sit comfortably in its setting. Double height space to entrance, external timber venetian blinds as used in Australia, Danish plank shaped grey bricks internally and externally, Juliet balconies to bedrooms, triple track sliding glazing for maximum openings,

**CAROLHAYES
MANAGEMENT**

020 7482 1555

www.carolhayesmanagement.co.uk