

Bermondsey Studio

Bermondsey Studio is a 8,000 sq ft event space & film location-based in Bermondsey, a stone's throw away from London Bridge. The location is a derelict former industrial laundrette made up of 3 units, offering a variety of backdrops and raw aesthetics whilst being production-ready. With drive-in access, old machinery, pitched roof ceiling, raw brick walls, exposed beams and decommissioned pipework, the location offers a mix of industrial, office and storage spaces. The ground floor is made up of several rooms with old industrial machinery, blank canvas space, rooms with graffitied walls, low beamed ceilings, exposed pipework and raw floors. The space can be blacked out or have natural light through shuttered windows. There is also an excellent event space, perfect for catering, cloakroom/green room and event production. In addition, it is the perfect spot for hair & make-up, client holding area, production office and break-out space. All units have a 3 Phase 32A Outlet with a main switch and distribution boxes of 6 x 16A and further down to 13A gang plugs.



020 7482 1555

www.carolhayesmanagement.co.uk



Bermondsey Studio

Bermondsey Studio is a 8,000 sq ft event space & film location-based in Bermondsey, a stone's throw away from London Bridge. The location is a derelict former industrial laundrette made up of 3 units, offering a variety of backdrops and raw aesthetics whilst being production-ready. With drive-in access, old machinery, pitched roof ceiling, raw brick walls, exposed beams and decommissioned pipework, the location offers a mix of industrial, office and storage spaces. The ground floor is made up of several rooms with old industrial machinery, blank canvas space, rooms with graffitied walls, low beamed ceilings, exposed pipework and raw

CAROL HAYES
MANAGEMENT

020 7482 1555

www.carolhayesmanagement.co.uk



Bermondsey Studio

Bermondsey Studio is a 8,000 sq ft event space & film location-based in Bermondsey, a stone's throw away from London Bridge. The location is a derelict former industrial laundrette made up of 3 units, offering a variety of backdrops and raw aesthetics whilst being production-ready. With drive-in access, old machinery, pitched roof ceiling, raw brick walls, exposed beams and decommissioned pipework, the location offers a mix of industrial, office and storage spaces. The ground floor is made up of several rooms with old industrial machinery, blank canvas space, rooms with graffitied walls, low beamed ceilings, exposed pipework and raw

CAROL HAYES
MANAGEMENT

020 7482 1555

www.carolhayesmanagement.co.uk



Bermondsey Studio

Bermondsey Studio is a 8,000 sq ft event space & film location-based in Bermondsey, a stone's throw away from London Bridge. The location is a derelict former industrial laundrette made up of 3 units, offering a variety of backdrops and raw aesthetics whilst being production-ready. With drive-in access, old machinery, pitched roof ceiling, raw brick walls, exposed beams and decommissioned pipework, the location offers a mix of industrial, office and storage spaces. The ground floor is made up of several rooms with old industrial machinery, blank canvas space, rooms with graffitied walls, low beamed ceilings, exposed pipework and raw

CAROL HAYES
MANAGEMENT

020 7482 1555

www.carolhayesmanagement.co.uk



Bermondsey Studio

Bermondsey Studio is a 8,000 sq ft event space & film location-based in Bermondsey, a stone's throw away from London Bridge. The location is a derelict former industrial laundrette made up of 3 units, offering a variety of backdrops and raw aesthetics whilst being production-ready. With drive-in access, old machinery, pitched roof ceiling, raw brick walls, exposed beams and decommissioned pipework, the location offers a mix of industrial, office and storage spaces. The ground floor is made up of several rooms with old industrial machinery, blank canvas space, rooms with graffitied walls, low beamed ceilings, exposed pipework and raw

CAROL HAYES
MANAGEMENT

020 7482 1555

www.carolhayesmanagement.co.uk



Bermondsey Studio

Bermondsey Studio is a 8,000 sq ft event space & film location-based in Bermondsey, a stone's throw away from London Bridge. The location is a derelict former industrial laundrette made up of 3 units, offering a variety of backdrops and raw aesthetics whilst being production-ready. With drive-in access, old machinery, pitched roof ceiling, raw brick walls, exposed beams and decommissioned pipework, the location offers a mix of industrial, office and storage spaces. The ground floor is made up of several rooms with old industrial machinery, blank canvas space, rooms with graffitied walls, low beamed ceilings, exposed pipework and raw

CAROL HAYES
MANAGEMENT

020 7482 1555

www.carolhayesmanagement.co.uk



Bermondsey Studio

Bermondsey Studio is a 8,000 sq ft event space & film location-based in Bermondsey, a stone's throw away from London Bridge. The location is a derelict former industrial laundrette made up of 3 units, offering a variety of backdrops and raw aesthetics whilst being production-ready. With drive-in access, old machinery, pitched ceiling, raw brick walls, exposed beams and decommissioned pipework, the location offers a mix of industrial, office and storage spaces. The ground floor is made up of several rooms with old industrial machinery, blank canvas space, rooms with graffitied walls, low beamed ceilings, exposed pipework and raw

CAROL HAYES
MANAGEMENT

020 7482 1555

www.carolhayesmanagement.co.uk



Bermondsey Studio

Bermondsey Studio is a 8,000 sq ft event space & film location-based in Bermondsey, a stone's throw away from London Bridge. The location is a derelict former industrial laundrette made up of 3 units, offering a variety of backdrops and raw aesthetics whilst being production-ready. With drive-in access, old machinery, pitched roof ceiling, raw brick walls, exposed beams and decommissioned pipework, the location offers a mix of industrial, office and storage spaces. The ground floor is made up of several rooms with old industrial machinery, blank canvas space, rooms with graffitied walls, low beamed ceilings, exposed pipework and raw

CAROLHAYES
MANAGEMENT

020 7482 1555

www.carolhayesmanagement.co.uk



Bermondsey Studio

Bermondsey Studio is a 8,000 sq ft event space & film location-based in Bermondsey, a stone's throw away from London Bridge. The location is a derelict former industrial laundrette made up of 3 units, offering a variety of backdrops and raw aesthetics whilst being production-ready. With drive-in access, old machinery, pitched roof ceiling, raw brick walls, exposed beams and decommissioned pipework, the location offers a mix of industrial, office and storage spaces. The ground floor is made up of several rooms with old industrial machinery, blank canvas space, rooms with graffitied walls, low beamed ceilings, exposed pipework and raw

CAROLHAYES
MANAGEMENT

020 7482 1555

www.carolhayesmanagement.co.uk



Bermondsey Studio

Bermondsey Studio is a 8,000 sq ft event space & film location-based in Bermondsey, a stone's throw away from London Bridge. The location is a derelict former industrial laundrette made up of 3 units, offering a variety of backdrops and raw aesthetics whilst being production-ready. With drive-in access, old machinery, pitched roof ceiling, raw brick walls, exposed beams and decommissioned pipework, the location offers a mix of industrial, office and storage spaces. The ground floor is made up of several rooms with old industrial machinery, blank canvas space, rooms with graffitied walls, low beamed ceilings, exposed pipework and raw

CAROLHAYES
MANAGEMENT

020 7482 1555

www.carolhayesmanagement.co.uk



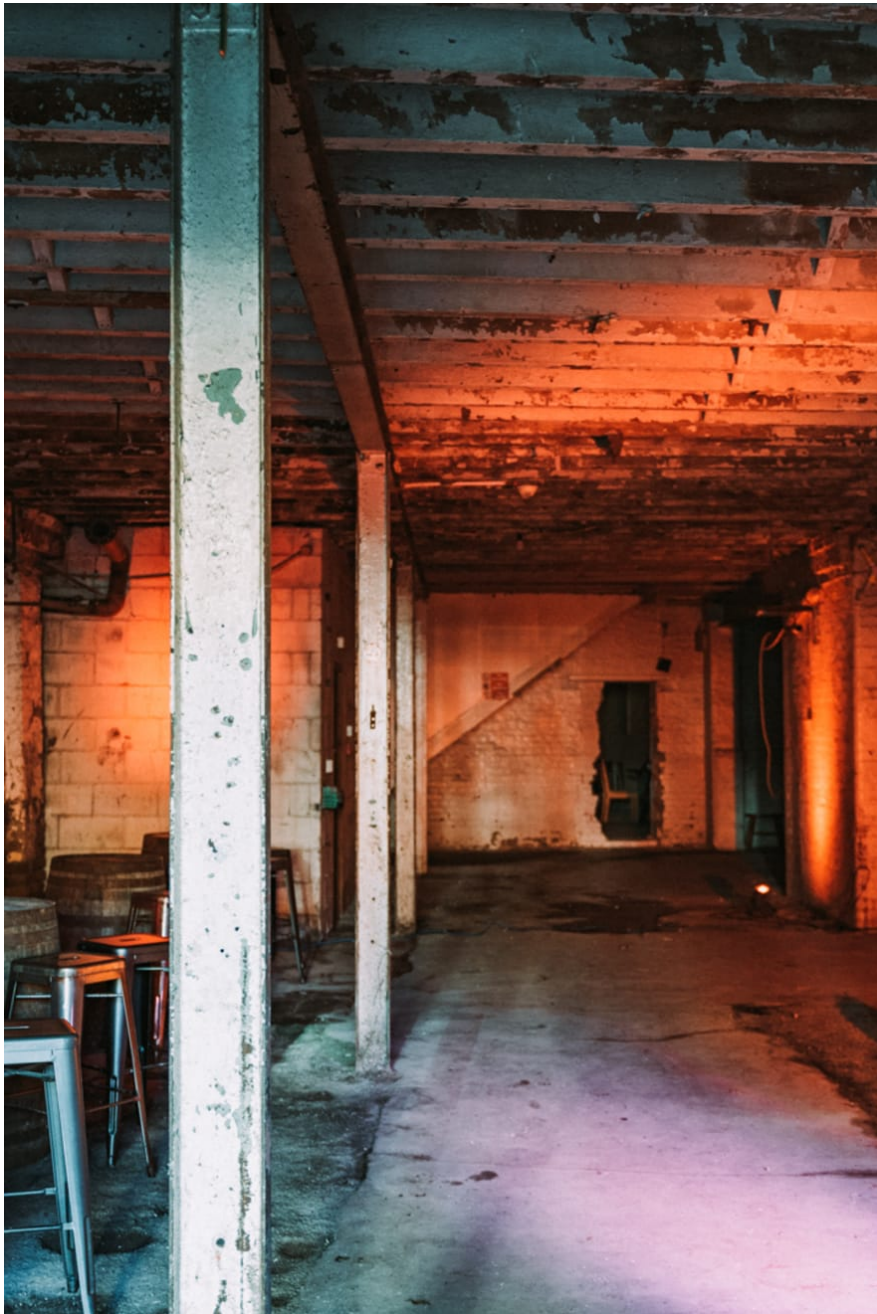
Bermondsey Studio

Bermondsey Studio is a 8,000 sq ft event space & film location-based in Bermondsey, a stone's throw away from London Bridge. The location is a derelict former industrial laundrette made up of 3 units, offering a variety of backdrops and raw aesthetics whilst being production-ready. With drive-in access, old machinery, pitched roof ceiling, raw brick walls, exposed beams and decommissioned pipework, the location offers a mix of industrial, office and storage spaces. The ground floor is made up of several rooms with old industrial machinery, blank canvas space, rooms with graffitied walls, low beamed ceilings, exposed pipework and raw

CAROL HAYES
MANAGEMENT

020 7482 1555

www.carolhayesmanagement.co.uk



Bermondsey Studio

Bermondsey Studio is a 8,000 sq ft event space & film location-based in Bermondsey, a stone's throw away from London Bridge. The location is a derelict former industrial laundrette made up of 3 units, offering a variety of backdrops and raw aesthetics whilst being production-ready. With drive-in access, old machinery, pitched roof ceiling, raw brick walls, exposed beams and decommissioned pipework, the location offers a mix of industrial, office and storage spaces. The ground floor is made up of several rooms with old industrial machinery, blank canvas space, rooms with graffitied walls, low beamed ceilings, exposed pipework and raw

CAROLHAYES
MANAGEMENT

020 7482 1555

www.carolhayesmanagement.co.uk



Bermondsey Studio

Bermondsey Studio is a 8,000 sq ft event space & film location-based in Bermondsey, a stone's throw away from London Bridge. The location is a derelict former industrial laundrette made up of 3 units, offering a variety of backdrops and raw aesthetics whilst being production-ready. With drive-in access, old machinery, pitched roof ceiling, raw brick walls, exposed beams and decommissioned pipework, the location offers a mix of industrial, office and storage spaces. The ground floor is made up of several rooms with old industrial machinery, blank canvas space, rooms with graffitied walls, low beamed ceilings, exposed pipework and raw

CAROL HAYES
MANAGEMENT

020 7482 1555

www.carolhayesmanagement.co.uk



Bermondsey Studio

Bermondsey Studio is a 8,000 sq ft event space & film location-based in Bermondsey, a stone's throw away from London Bridge. The location is a derelict former industrial laundrette made up of 3 units, offering a variety of backdrops and raw aesthetics whilst being production-ready. With drive-in access, old machinery, pitched roof ceiling, raw brick walls, exposed beams and decommissioned pipework, the location offers a mix of industrial, office and storage spaces. The ground floor is made up of several rooms with old industrial machinery, blank canvas space, rooms with graffitied walls, low beamed ceilings, exposed pipework and raw

CAROL HAYES
MANAGEMENT

020 7482 1555

www.carolhayesmanagement.co.uk



Bermondsey Studio

Bermondsey Studio is a 8,000 sq ft event space & film location-based in Bermondsey, a stone's throw away from London Bridge. The location is a derelict former industrial laundrette made up of 3 units, offering a variety of backdrops and raw aesthetics whilst being production-ready. With drive-in access, old machinery, pitched roof ceiling, raw brick walls, exposed beams and decommissioned pipework, the location offers a mix of industrial, office and storage spaces. The ground floor is made up of several rooms with old industrial machinery, blank canvas space, rooms with graffitied walls, low beamed ceilings, exposed pipework and raw

CAROL HAYES
MANAGEMENT

020 7482 1555

www.carolhayesmanagement.co.uk



Bermondsey Studio

Bermondsey Studio is a 8,000 sq ft event space & film location-based in Bermondsey, a stone's throw away from London Bridge. The location is a derelict former industrial laundrette made up of 3 units, offering a variety of backdrops and raw aesthetics whilst being production-ready. With drive-in access, old machinery, pitched roof ceiling, raw brick walls, exposed beams and decommissioned pipework, the location offers a mix of industrial, office and storage spaces. The ground floor is made up of several rooms with old industrial machinery, blank canvas space, rooms with graffitied walls, low beamed ceilings, exposed pipework and raw

CAROL HAYES
MANAGEMENT

020 7482 1555

www.carolhayesmanagement.co.uk



Bermondsey Studio

Bermondsey Studio is a 8,000 sq ft event space & film location-based in Bermondsey, a stone's throw away from London Bridge. The location is a derelict former industrial laundrette made up of 3 units, offering a variety of backdrops and raw aesthetics whilst being production-ready. With drive-in access, old machinery, pitched roof ceiling, raw brick walls, exposed beams and decommissioned pipework, the location offers a mix of industrial, office and storage spaces. The ground floor is made up of several rooms with old industrial machinery, blank canvas space, rooms with graffitied walls, low beamed ceilings, exposed pipework and raw

CAROL HAYES
MANAGEMENT

020 7482 1555

www.carolhayesmanagement.co.uk



Bermondsey Studio

Bermondsey Studio is a 8,000 sq ft event space & film location-based in Bermondsey, a stone's throw away from London Bridge. The location is a derelict former industrial laundrette made up of 3 units, offering a variety of backdrops and raw aesthetics whilst being production-ready. With drive-in access, old machinery, pitched roof ceiling, raw brick walls, exposed beams and decommissioned pipework, the location offers a mix of industrial, office and storage spaces. The ground floor is made up of several rooms with old industrial machinery, blank canvas space, rooms with graffitied walls, low beamed ceilings, exposed pipework and raw

CAROL HAYES
MANAGEMENT

020 7482 1555

www.carolhayesmanagement.co.uk



Bermondsey Studio

Bermondsey Studio is a 8,000 sq ft event space & film location-based in Bermondsey, a stone's throw away from London Bridge. The location is a derelict former industrial laundrette made up of 3 units, offering a variety of backdrops and raw aesthetics whilst being production-ready. With drive-in access, old machinery, pitched roof ceiling, raw brick walls, exposed beams and decommissioned pipework, the location offers a mix of industrial, office and storage spaces. The ground floor is made up of several rooms with old industrial machinery, blank canvas space, rooms with graffitied walls, low beamed ceilings, exposed pipework and raw

CAROL HAYES
MANAGEMENT

020 7482 1555

www.carolhayesmanagement.co.uk



Bermondsey Studio

Bermondsey Studio is a 8,000 sq ft event space & film location-based in Bermondsey, a stone's throw away from London Bridge. The location is a derelict former industrial laundrette made up of 3 units, offering a variety of backdrops and raw aesthetics whilst being production-ready. With drive-in access, old machinery, pitched roof ceiling, raw brick walls, exposed beams and decommissioned pipework, the location offers a mix of industrial, office and storage spaces. The ground floor is made up of several rooms with old industrial machinery, blank canvas space, rooms with graffitied walls, low beamed ceilings, exposed pipework and raw

CAROL HAYES
MANAGEMENT

020 7482 1555

www.carolhayesmanagement.co.uk



Bermondsey Studio

Bermondsey Studio is a 8,000 sq ft event space & film location-based in Bermondsey, a stone's throw away from London Bridge. The location is a derelict former industrial laundrette made up of 3 units, offering a variety of backdrops and raw aesthetics whilst being production-ready. With drive-in access, old machinery, pitched roof ceiling, raw brick walls, exposed beams and decommissioned pipework, the location offers a mix of industrial, office and storage spaces. The ground floor is made up of several rooms with old industrial machinery, blank canvas space, rooms with graffitied walls, low beamed ceilings, exposed pipework and raw

CAROLHAYES
MANAGEMENT

020 7482 1555

www.carolhayesmanagement.co.uk