

Beaminster Park - Dorset

Parnham Park is one of the oldest Grade 1 listed stately homes in Dorset. Originally built in the 1440's Parnham was completely remodeled in the 1800's by architect John Nash, who was renowned for his work on Buckingham Palace. Parnham has a wealth of history behind it and 133 acres of parkland and gardens. The grounds were landscaped by Inigo Thomas and are Grade 1 listed on the register of Historic Parks & Gardens.

The grounds include a lake, deer park, river, waterfall, landscaped lawns, gazebos, sculptures, a walled kitchen garden, fountains, a 1km lime tree-lined drive, and a river running through it. The West Wing of the house has 3 large double bedrooms a mezzanine kitchen and orangery available for use.

The West Wing features an extensive taxidermy collection amongst one of the most unusual collections of antiques and curios in the country. The grounds of Parnham Park and some

areas of the house are available as a location for filming and photography. Journey time from London is 2.5 hours and we

are close to the Jurassic Coast. There is extensive parking provisions and large vehicle access.



020 7482 1555

www.carolhayesmanagement.co.uk



Beaminstor Park - Dorset

Parnham Park is one of the oldest Grade 1 listed stately homes in Dorset. Originally built in the 1400s Parnham was completely remodeled in the 1800's by architect John Nash, who was renowned for his work on Buckingham Palace. Parnham has a wealth of history behind it and 135 acres of parkland and gardens. The grounds were landscaped by Inigo Thomas and are Grade 1 listed on the register of Historic Parks & Gardens. The grounds include a lake, deer park, river, waterfall, landscaped lawns, gazebos, sculptures, a walled kitchen garden, fountains, a 1km lime tree-lined drive, and a river running through it. The West Wing of the house

CAROL HAYES
MANAGEMENT

020 7482 1555

www.carolhayesmanagement.co.uk



Beaminstor Park - Dorset

Parnham Park is one of the oldest Grade 1 listed stately homes in Dorset. Originally built in the 140's Parnham was completely remodeled in the 1800's by architect John Nash, who was renowned for his work on Buckingham Palace. Parnham has a wealth of history behind it and 135 acres of parkland and gardens. The grounds were landscaped by Inigo Thomas and are Grade 1 listed on the register of Historic Parks & Gardens. The grounds include a lake, deer park, river, waterfall, landscaped lawns, gazebos, sculptures, a walled kitchen garden, fountains, a 1km lime tree-lined drive, and a river running through it. The West Wing of the house

CAROL HAYES
MANAGEMENT

020 7482 1555

www.carolhayesmanagement.co.uk



Beaminstor Park - Dorset

Parnham Park is one of the oldest Grade 1 listed stately homes in Dorset. Originally built in the 1440's Parnham was completely remodeled in the 1800's by architect John Nash, who was renowned for his work on Buckingham Palace. Parnham has a wealth of history behind it and 155 acres of parkland and gardens. The grounds were landscaped by Inigo Thomas and are Grade 1 listed on the register of Historic Parks & Gardens. The grounds include a lake, deer park, river, waterfall, landscaped lawns, gazebos, sculptures, a walled kitchen garden, fountains, a 1km lime tree-lined drive, and a river running through it. The West Wing of the house

CAROL HAYES
MANAGEMENT

020 7482 1555

www.carolhayesmanagement.co.uk



Beaminstor Park - Dorset

Parnham Park is one of the oldest Grade 1 listed stately homes in Dorset. Originally built in the 1400s Parnham was completely remodeled in the 1800's by architect John Nash, who was renowned for his work on Buckingham Palace. Parnham has a wealth of history behind it and 135 acres of parkland and gardens. The grounds were landscaped by Inigo Thomas and are Grade 1 listed on the register of Historic Parks & Gardens. The grounds include a lake, deer park, river, waterfall, landscaped lawns, gazebos, sculptures, a walled kitchen garden, fountains, a 1km lime tree-lined drive, and a river running through it. The West Wing of the house

CAROL HAYES
MANAGEMENT

020 7482 1555

www.carolhayesmanagement.co.uk



Beaminster Park - Dorset

Parnham Park is one of the oldest Grade 1 listed stately homes in Dorset. Originally built in the 1440's Parnham was completely remodeled in the 1800's by architect John Nash, who was renowned for his work on Buckingham Palace. Parnham has a wealth of history behind it and 135 acres of parkland and gardens. The grounds were landscaped by Inigo Thomas and are Grade 1 listed on the register of Historic Parks & Gardens. The grounds include a lake, deer park, river, waterfall, landscaped lawns, gazebos, sculptures, a walled kitchen garden, fountains, a 1km lime tree-lined drive, and a river running through it. The West Wing of the house

CAROLHAYES
MANAGEMENT

020 7482 1555

www.carolhayesmanagement.co.uk



Beaminstor Park - Dorset

Parnham Park is one of the oldest Grade 1 listed stately homes in Dorset. Originally built in the 1440's Parnham was completely remodeled in the 1800's by architect John Nash, who was renowned for his work on Buckingham Palace. Parnham has a wealth of history behind it and 135 acres of parkland and gardens. The grounds were landscaped by Inigo Thomas and are Grade 1 listed on the register of Historic Parks & Gardens. The grounds include a lake, deer park, river, waterfall, landscaped lawns, gazebos, sculptures, a walled kitchen garden, fountains, a 1km lime tree-lined drive, and a river running through it. The West Wing of the house

**CAROLHAYES
MANAGEMENT**

020 7482 1555

www.carolhayesmanagement.co.uk



Beaminstor Park - Dorset

Parnham Park is one of the oldest Grade 1 listed stately homes in Dorset. Originally built in the 1440's Parnham was completely remodeled in the 1800's by architect John Nash, who was renowned for his work on Buckingham Palace. Parnham has a wealth of history behind it and 135 acres of parkland and gardens. The grounds were landscaped by Inigo Thomas and are Grade 1 listed on the register of Historic Parks & Gardens. The grounds include a lake, deer park, river, waterfall, landscaped lawns, gazebos, sculptures, a walled kitchen garden, fountains, a 1km lime tree-lined drive, and a river running through it. The West Wing of the house

CAROLHAYES
MANAGEMENT

020 7482 1555

www.carolhayesmanagement.co.uk



Beaminstor Park - Dorset

Parnham Park is one of the oldest Grade 1 listed stately homes in Dorset. Originally built in the 140's Parnham was completely remodeled in the 1800's by architect John Nash, who was renowned for his work on Buckingham Palace. Parnham has a wealth of history behind it and 155 acres of parkland and gardens. The grounds were landscaped by Inigo Thomas and are Grade 1 listed on the register of Historic Parks & Gardens. The grounds include a lake, deer park, river, waterfall, landscaped lawns, gazebos, sculptures, a walled kitchen garden, fountains, a 1km lime tree-lined drive, and a river running through it. The West Wing of the house

**CAROLHAYES
MANAGEMENT**

020 7482 1555

www.carolhayesmanagement.co.uk



Beaminster Park - Dorset

Parnham Park is one of the oldest Grade 1 listed stately homes in Dorset. Originally built in the 1440's Parnham was completely remodeled in the 1800's by architect John Nash, who was renowned for his work on Buckingham Palace. Parnham has a wealth of history behind it and 135 acres of parkland and gardens. The grounds were landscaped by Inigo Thomas and are Grade 1 listed on the register of Historic Parks & Gardens. The grounds include a lake, deer park, river, waterfall, landscaped lawns, gazebos, sculptures, a walled kitchen garden, fountains, a 1km lime tree-lined drive, and a river running through it. The West Wing of the house

**CAROLHAYES
MANAGEMENT**

020 7482 1555

www.carolhayesmanagement.co.uk



Beaminster Park - Dorset

Parnham Park is one of the oldest Grade 1 listed stately homes in Dorset. Originally built in the 1400's Parnham was completely remodeled in the 1800's by architect John Nash, who was renowned for his work on Buckingham Palace. Parnham has a wealth of history behind it and 135 acres of parkland and gardens. The grounds were landscaped by Inigo Thomas and are Grade 1 listed on the register of Historic Parks & Gardens. The grounds include a lake, deer park, river, waterfall, landscaped lawns, gazebos, sculptures, a walled kitchen garden, fountains, a 1km lime tree-lined drive, and a river running through it. The West Wing of the house

CAROLHAYES
MANAGEMENT

020 7482 1555

www.carolhayesmanagement.co.uk



Beaminster Park - Dorset

Parnham Park is one of the oldest Grade 1 listed stately homes in Dorset. Originally built in the 1440's Parnham was completely remodeled in the 1800's by architect John Nash, who was renowned for his work on Buckingham Palace. Parnham has a wealth of history behind it and 155 acres of parkland and gardens. The grounds were landscaped by Inigo Thomas and are Grade 1 listed on the register of Historic Parks & Gardens. The grounds include a lake, deer park, river, waterfall, landscaped lawns, gazebos, sculptures, a walled kitchen garden, fountains, a 1km lime tree-lined drive, and a river running through it. The West Wing of the house

CAROLHAYES
MANAGEMENT

020 7482 1555

www.carolhayesmanagement.co.uk



Beaminstor Park - Dorset

Parnham Park is one of the oldest Grade 1 listed stately homes in Dorset. Originally built in the 1400's Parnham was completely remodeled in the 1800's by architect John Nash, who was renowned for his work on Buckingham Palace. Parnham has a wealth of history behind it and 135 acres of parkland and gardens. The grounds were landscaped by Inigo Thomas and are Grade 1 listed on the register of Historic Parks & Gardens. The grounds include a lake, deer park, river, waterfall, landscaped lawns, gazebos, sculptures, a walled kitchen garden, fountains, a 1km lime tree-lined drive, and a river running through it. The West Wing of the house

CAROLHAYES
MANAGEMENT

020 7482 1555

www.carolhayesmanagement.co.uk



Beaminstor Park - Dorset

Parnham Park is one of the oldest Grade 1 listed stately homes in Dorset. Originally built in the 1400's Parnham was completely remodeled in the 1800's by architect John Nash, who was renowned for his work on Buckingham Palace. Parnham has a wealth of history behind it and 135 acres of parkland and gardens. The grounds were landscaped by Inigo Thomas and are Grade 1 listed on the register of Historic Parks & Gardens. The grounds include a lake, deer park, river, waterfall, landscaped lawns, gazebos, sculptures, a walled kitchen garden, fountains, a 1km lime tree-lined drive, and a river running through it. The West Wing of the house

**CAROLHAYES
MANAGEMENT**

020 7482 1555

www.carolhayesmanagement.co.uk



Beaminstor Park - Dorset

Parnham Park is one of the oldest Grade 1 listed stately homes in Dorset. Originally built in the 1400's Parnham was completely remodeled in the 1800's by architect John Nash, who was renowned for his work on Buckingham Palace. Parnham has a wealth of history behind it and 135 acres of parkland and gardens. The grounds were landscaped by Inigo Thomas and are Grade 1 listed on the register of Historic Parks & Gardens. The grounds include a lake, deer park, river, waterfall, landscaped lawns, gazebos, sculptures, a walled kitchen garden, fountains, a 1km lime tree-lined drive, and a river running through it. The West Wing of the house

CAROL HAYES
MANAGEMENT

020 7482 1555

www.carolhayesmanagement.co.uk



Beaminstor Park - Dorset

Parnham Park is one of the oldest Grade 1 listed stately homes in Dorset. Originally built in the 1440's Parnham was completely remodeled in the 1800's by architect John Nash, who was renowned for his work on Buckingham Palace. Parnham has a wealth of history behind it and 135 acres of parkland and gardens. The grounds were landscaped by Inigo Thomas and are Grade 1 listed on the register of Historic Parks & Gardens. The grounds include a lake, deer park, river, waterfall, landscaped lawns, gazebos, sculptures, a walled kitchen garden, fountains, a 1km lime tree-lined drive, and a river running through it. The West Wing of the house

CAROLHAYES
MANAGEMENT

020 7482 1555

www.carolhayesmanagement.co.uk



Beaminstor Park - Dorset

Parnham Park is one of the oldest Grade 1 listed stately homes in Dorset. Originally built in the 1400's Parnham was completely remodeled in the 1800's by architect John Nash, who was renowned for his work on Buckingham Palace. Parnham has a wealth of history behind it and 135 acres of parkland and gardens. The grounds were landscaped by Inigo Thomas and are Grade 1 listed on the register of Historic Parks & Gardens. The grounds include a lake, deer park, river, waterfall, landscaped lawns, gazebos, sculptures, a walled kitchen garden, fountains, a 1km lime tree-lined drive, and a river running through it. The West Wing of the house

CAROLHAYES
MANAGEMENT

020 7482 1555

www.carolhayesmanagement.co.uk



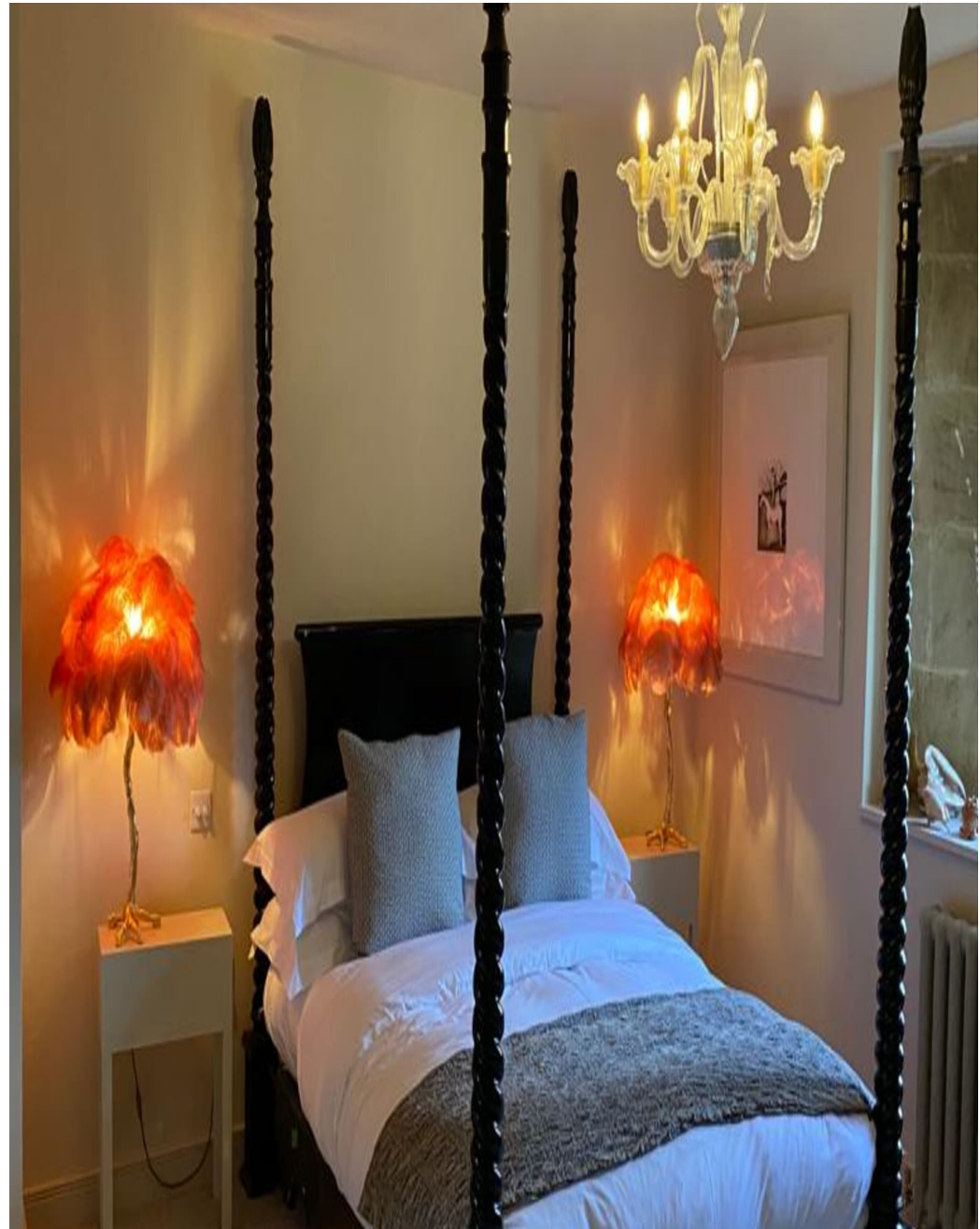
Beaminster Park - Dorset

Parnham Park is one of the oldest Grade 1 listed stately homes in Dorset. Originally built in the 1440's Parnham was completely remodeled in the 1800's by architect John Nash, who was renowned for his work on Buckingham Palace. Parnham has a wealth of history behind it and 155 acres of parkland and gardens. The grounds were landscaped by Inigo Thomas and are Grade 1 listed on the register of Historic Parks & Gardens. The grounds include a lake, deer park, river, waterfall, landscaped lawns, gazebos, sculptures, a walled kitchen garden, fountains, a 1km lime tree-lined drive, and a river running through it. The West Wing of the house

**CAROLHAYES
MANAGEMENT**

020 7482 1555

www.carolhayesmanagement.co.uk



Beaminster Park - Dorset

Parnham Park is one of the oldest Grade 1 listed stately homes in Dorset. Originally built in the 1440's Parnham was completely remodeled in the 1800's by architect John Nash, who was renowned for his work on Buckingham Palace. Parnham has a wealth of history behind it and 155 acres of parkland and gardens. The grounds were landscaped by Inigo Thomas and are Grade 1 listed on the register of Historic Parks & Gardens. The grounds include a lake, deer park, river, waterfall, landscaped lawns, gazebos, sculptures, a walled kitchen garden, fountains, a 1km lime tree-lined drive, and a river running through it. The West Wing of the house

**CAROLHAYES
MANAGEMENT**

020 7482 1555

www.carolhayesmanagement.co.uk



Beaminstor Park - Dorset

Parnham Park is one of the oldest Grade 1 listed stately homes in Dorset. Originally built in the 140's Parnham was completely remodeled in the 1800's by architect John Nash, who was renowned for his work on Buckingham Palace. Parnham has a wealth of history behind it and 155 acres of parkland and gardens. The grounds were landscaped by Inigo Thomas and are Grade 1 listed on the register of Historic Parks & Gardens. The grounds include a lake, deer park, river, waterfall, landscaped lawns, gazebos, sculptures, a walled kitchen garden, fountains, a 1km lime tree-lined drive, and a river running through it. The West Wing of the house

CAROL HAYES
MANAGEMENT

020 7482 1555

www.carolhayesmanagement.co.uk



Beaminstor Park - Dorset

Parnham Park is one of the oldest Grade 1 listed stately homes in Dorset. Originally built in the 1440's Parnham was completely remodeled in the 1800's by architect John Nash, who was renowned for his work on Buckingham Palace. Parnham has a wealth of history behind it and 155 acres of parkland and gardens. The grounds were landscaped by Inigo Thomas and are Grade 1 listed on the register of Historic Parks & Gardens. The grounds include a lake, deer park, river, waterfall, landscaped lawns, gazebos, sculptures, a walled kitchen garden, fountains, a 1km lime tree-lined drive, and a river running through it. The West Wing of the house

**CAROLHAYES
MANAGEMENT**

020 7482 1555

www.carolhayesmanagement.co.uk



Beaminstor Park - Dorset

Parnham Park is one of the oldest Grade 1 listed stately homes in Dorset. Originally built in the 1400s Parnham was completely remodeled in the 1800's by architect John Nash, who was renowned for his work on Buckingham Palace. Parnham has a wealth of history behind it and 135 acres of parkland and gardens. The grounds were landscaped by Inigo Thomas and are Grade 1 listed on the register of Historic Parks & Gardens. The grounds include a lake, deer park, river, waterfall, landscaped lawns, gazebos, sculptures, a walled kitchen garden, fountains, a 1km lime tree-lined drive, and a river running through it. The West Wing of the house

CAROL HAYES
MANAGEMENT

020 7482 1555

www.carolhayesmanagement.co.uk



Beaminstor Park - Dorset

Parnham Park is one of the oldest Grade 1 listed stately homes in Dorset. Originally built in the 1400's Parnham was completely remodeled in the 1800's by architect John Nash, who was renowned for his work on Buckingham Palace. Parnham has a wealth of history behind it and 135 acres of parkland and gardens. The grounds were landscaped by Inigo Thomas and are Grade 1 listed on the register of Historic Parks & Gardens. The grounds include a lake, deer park, river, waterfall, landscaped lawns, gazebos, sculptures, a walled kitchen garden, fountains, a 1km lime tree-lined drive, and a river running through it. The West Wing of the house

**CAROLHAYES
MANAGEMENT**

020 7482 1555

www.carolhayesmanagement.co.uk



Beaminstor Park - Dorset

Parnham Park is one of the oldest Grade 1 listed stately homes in Dorset. Originally built in the 1400s Parnham was completely remodeled in the 1800's by architect John Nash, who was renowned for his work on Buckingham Palace. Parnham has a wealth of history behind it and 135 acres of parkland and gardens. The grounds were landscaped by Inigo Thomas and are Grade 1 listed on the register of Historic Parks & Gardens. The grounds include a lake, deer park, river, waterfall, landscaped lawns, gazebos, sculptures, a walled kitchen garden, fountains, a 1km lime tree-lined drive, and a river running through it. The West Wing of the house

CAROLHAYES
MANAGEMENT

020 7482 1555

www.carolhayesmanagement.co.uk



Beaminster Park - Dorset

Parnham Park is one of the oldest Grade 1 listed stately homes in Dorset. Originally built in the 1440's Parnham was completely remodeled in the 1800's by architect John Nash, who was renowned for his work on Buckingham Palace. Parnham has a wealth of history behind it and 155 acres of parkland and gardens. The grounds were landscaped by Inigo Thomas and are Grade 1 listed on the register of Historic Parks & Gardens. The grounds include a lake, deer park, river, waterfall, landscaped lawns, gazebos, sculptures, a walled kitchen garden, fountains, a 1km lime tree-lined drive, and a river running through it. The West Wing of the house

CAROLHAYES
MANAGEMENT

020 7482 1555

www.carolhayesmanagement.co.uk



Beaminstor Park - Dorset

Parnham Park is one of the oldest Grade 1 listed stately homes in Dorset. Originally built in the 140's Parnham was completely remodeled in the 1800's by architect John Nash, who was renowned for his work on Buckingham Palace. Parnham has a wealth of history behind it and 155 acres of parkland and gardens. The grounds were landscaped by Inigo Thomas and are Grade 1 listed on the register of Historic Parks & Gardens. The grounds include a lake, deer park, river, waterfall, landscaped lawns, gazebos, sculptures, a walled kitchen garden, fountains, a 1km lime tree-lined drive, and a river running through it. The West Wing of the house

**CAROL HAYES
MANAGEMENT**

020 7482 1555

www.carolhayesmanagement.co.uk



Beaminstor Park - Dorset

Parnham Park is one of the oldest Grade 1 listed stately homes in Dorset. Originally built in the 1400's Parnham was completely remodeled in the 1800's by architect John Nash, who was renowned for his work on Buckingham Palace. Parnham has a wealth of history behind it and 155 acres of parkland and gardens. The grounds were landscaped by Inigo Thomas and are Grade 1 listed on the register of Historic Parks & Gardens. The grounds include a lake, deer park, river, waterfall, landscaped lawns, gazebos, sculptures, a walled kitchen garden, fountains, a 1km lime tree-lined drive, and a river running through it. The West Wing of the house

**CAROLHAYES
MANAGEMENT**

020 7482 1555

www.carolhayesmanagement.co.uk



Beaminstor Park - Dorset

Parnham Park is one of the oldest Grade 1 listed stately homes in Dorset. Originally built in the 1400s Parnham was completely remodeled in the 1800's by architect John Nash, who was renowned for his work on Buckingham Palace. Parnham has a wealth of history behind it and 135 acres of parkland and gardens. The grounds were landscaped by Inigo Thomas and are Grade 1 listed on the register of Historic Parks & Gardens. The grounds include a lake, deer park, river, waterfall, landscaped lawns, gazebos, sculptures, a walled kitchen garden, fountains, a 1km lime tree-lined drive, and a river running through it. The West Wing of the house

CAROLHAYES
MANAGEMENT

020 7482 1555

www.carolhayesmanagement.co.uk



Beaminstor Park - Dorset

Parnham Park is one of the oldest Grade 1 listed stately homes in Dorset. Originally built in the 1400s Parnham was completely remodeled in the 1800's by architect John Nash, who was renowned for his work on Buckingham Palace. Parnham has a wealth of history behind it and 155 acres of parkland and gardens. The grounds were landscaped by Inigo Thomas and are Grade 1 listed on the register of Historic Parks & Gardens. The grounds include a lake, deer park, river, waterfall, landscaped lawns, gazebos, sculptures, a walled kitchen garden, fountains, a 1km lime tree-lined drive, and a river running through it. The West Wing of the house

CAROLHAYES
MANAGEMENT

020 7482 1555

www.carolhayesmanagement.co.uk



Beaminstor Park - Dorset

Parnham Park is one of the oldest Grade 1 listed stately homes in Dorset. Originally built in the 140's Parnham was completely remodeled in the 1800's by architect John Nash, who was renowned for his work on Buckingham Palace. Parnham has a wealth of history behind it and 155 acres of parkland and gardens. The grounds were landscaped by Inigo Thomas and are Grade 1 listed on the register of Historic Parks & Gardens. The grounds include a lake, deer park, river, waterfall, landscaped lawns, gazebos, sculptures, a walled kitchen garden, fountains, a 1km lime tree-lined drive, and a river running through it. The West Wing of the house

**CAROLHAYES
MANAGEMENT**

020 7482 1555

www.carolhayesmanagement.co.uk