

Christobelle Batchelor

Stylists | Womens | New Talent

Editorial





Christobelle Batchelor
Stylists | Womens | New Talent
Editorial

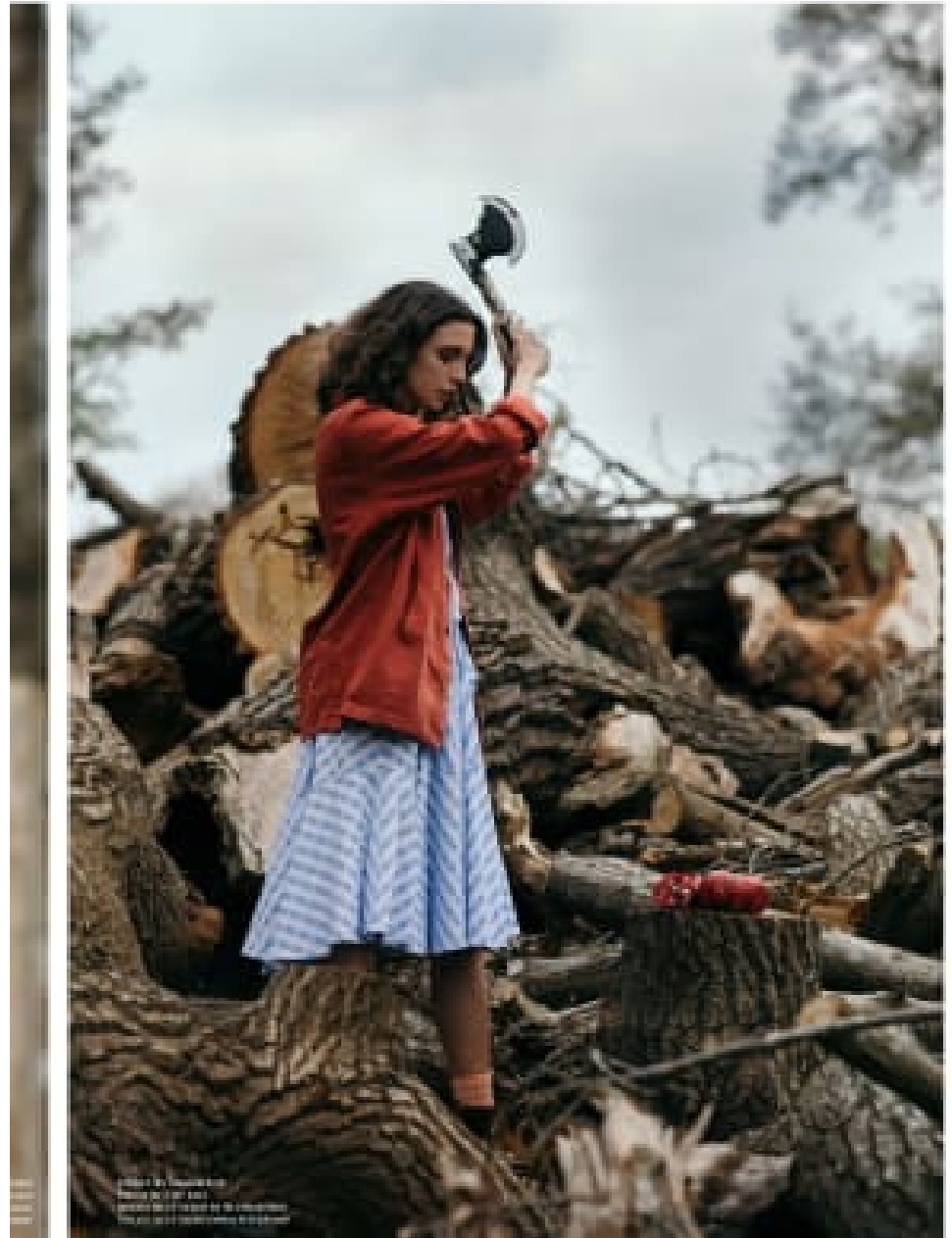
CAROL HAYES
MANAGEMENT
CREATIVE ARTIST & STYLE MANAGEMENT

020 7482 1555

www.carolhayesmanagement.co.uk



Christobelle Batchelor
Stylists | Womens | New Talent
Editorial



CAROL HAYES
MANAGEMENT
CREATIVE ARTIST & STYLE MANAGEMENT

020 7482 1555

www.carolhayesmanagement.co.uk



Christobelle Batchelor
Stylists | Womens | New Talent
Editorial



CAROL HAYES
MANAGEMENT
CREATIVE ARTIST & STYLE MANAGEMENT

020 7482 1555

www.carolhayesmanagement.co.uk



Christobelle Batchelor
Stylists | Womens | New Talent
Editorial



CAROL HAYES
MANAGEMENT
CREATIVE ARTIST & STYLE MANAGEMENT

020 7482 1555

www.carolhayesmanagement.co.uk



Christobelle Batchelor
Stylists | Womens | New Talent
Editorial





Christobelle Batchelor
Stylists | Womens | New Talent
Editorial



CAROL HAYES
MANAGEMENT
CREATIVE ARTIST & STYLE MANAGEMENT

020 7482 1555

www.carolhayesmanagement.co.uk



Christobelle Batchelor
Stylists | Womens | New Talent
Editorial



CAROL HAYES
MANAGEMENT
CREATIVE ARTIST & STYLE MANAGEMENT

020 7482 1555

www.carolhayesmanagement.co.uk



Christobelle Batchelor
Stylists | Womens | New Talent
Editorial



CAROLHAYES
MANAGEMENT
CREATIVE ARTIST & STYLE MANAGEMENT

020 7482 1555

www.carolhayesmanagement.co.uk



Christobelle Batchelor
Stylists | Womens | New Talent
Editorial

CAROL HAYES
MANAGEMENT
CREATIVE ARTIST & STYLE MANAGEMENT

020 7482 1555
www.carolhayesmanagement.co.uk



Christobelle Batchelor
Stylists | Womens | New Talent
Editorial

CAROL HAYES
MANAGEMENT
CREATIVE ARTIST & STYLE MANAGEMENT

020 7482 1555

www.carolhayesmanagement.co.uk



Christobelle Batchelor
Stylists | Womens | New Talent
Editorial

CAROL HAYES
MANAGEMENT
CREATIVE ARTIST & STYLE MANAGEMENT

020 7482 1555

www.carolhayesmanagement.co.uk



Christobelle Batchelor
Stylists | Womens | New Talent
Editorial

CAROLHAYES
MANAGEMENT
CREATIVE ARTIST & STYLE MANAGEMENT

020 7482 1555
www.carolhayesmanagement.co.uk



Christobelle Batchelor
 Stylists | Womens | New Talent
 Editorial

CAROL HAYES
MANAGEMENT
 CREATIVE ARTIST & STYLE MANAGEMENT

020 7482 1555
www.carolhayesmanagement.co.uk



Christobelle Batchelor

Stylists | Womens | New Talent
Editorial

CAROLHAYES
MANAGEMENT
CREATIVE ARTIST & STYLE MANAGEMENT

020 7482 1555

www.carolhayesmanagement.co.uk



© 2015 Carol Hayes Management
All rights reserved
www.carolhayesmanagement.co.uk

'WE NEVER KNOW THE WORTH OF WATER

TILL THE WELL IS DRY'

—THOMAS FULLER

Christobelle Batchelor
Stylists | Womens | New Talent
Editorial

CAROL HAYES
MANAGEMENT
CREATIVE ARTIST & STYLE MANAGEMENT

020 7482 1555
www.carolhayesmanagement.co.uk



Christobelle Batchelor
Stylists | Womens | New Talent
Editorial



CAROL HAYES
MANAGEMENT
CREATIVE ARTIST & STYLE MANAGEMENT

020 7482 1555

www.carolhayesmanagement.co.uk



Christobelle Batchelor
Stylists | Womens | New Talent
Editorial

CAROL HAYES
MANAGEMENT
CREATIVE ARTIST & STYLE MANAGEMENT

020 7482 1555

www.carolhayesmanagement.co.uk



Christobelle Batchelor
Stylists | Womens | New Talent
Editorial

CAROL HAYES
MANAGEMENT
CREATIVE ARTIST & STYLE MANAGEMENT

020 7482 1555
www.carolhayesmanagement.co.uk



Christobelle Batchelor

Stylists | Womens | New Talent
Editorial

**CAROLHAYES
MANAGEMENT**
CREATIVE ARTIST & STYLE MANAGEMENT

020 7482 1555

www.carolhayesmanagement.co.uk

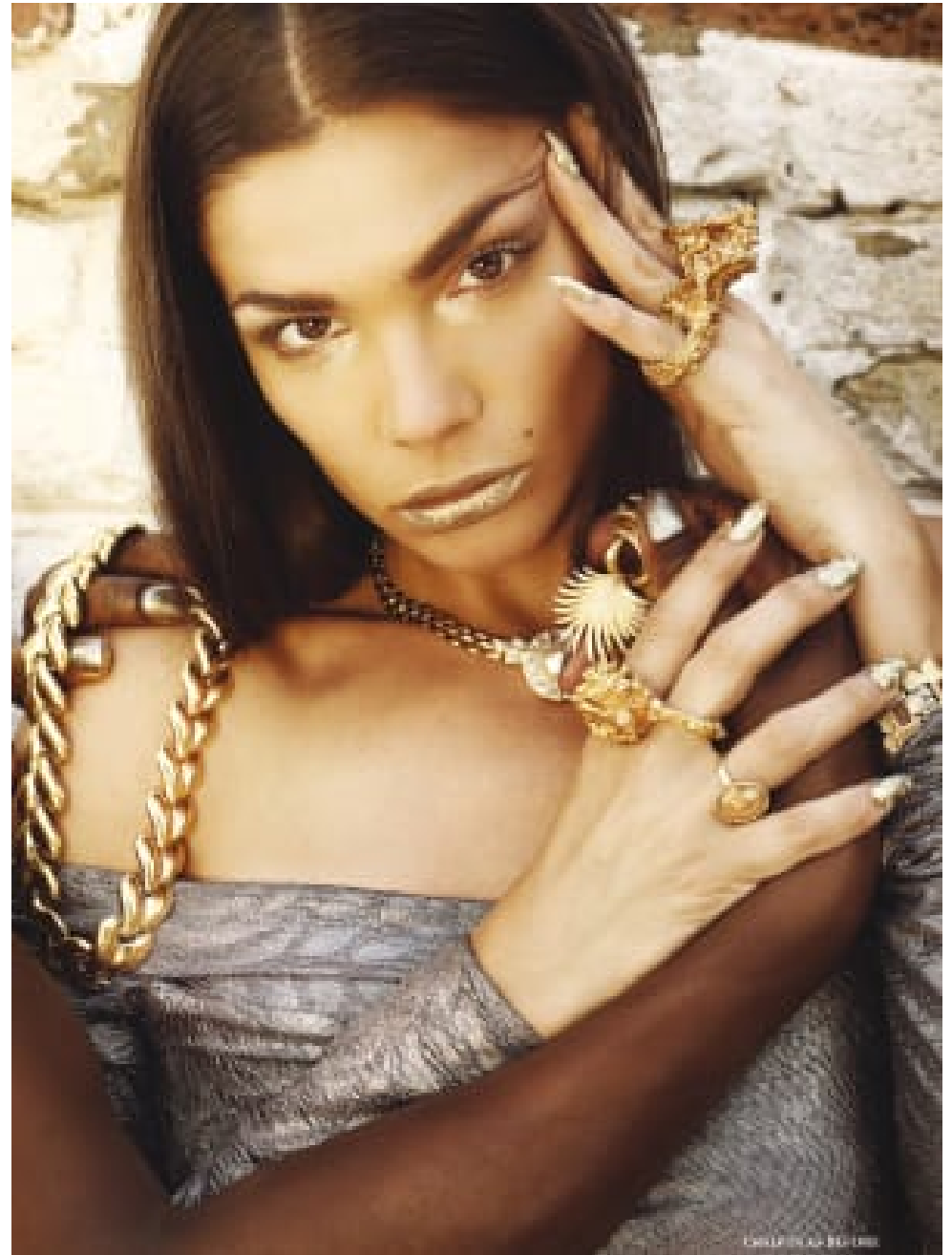


Christobelle Batchelor
Stylists | Womens | New Talent
Editorial

CAROL HAYES
MANAGEMENT
CREATIVE ARTIST & STYLE MANAGEMENT

020 7482 1555

www.carolhayesmanagement.co.uk



Christobelle Batchelor
Stylists | Womens | New Talent
Editorial

CAROL HAYES
MANAGEMENT
CREATIVE ARTIST & STYLE MANAGEMENT

020 7482 1555
www.carolhayesmanagement.co.uk



Christobelle Batchelor
Stylists | Womens | New Talent
Editorial

CAROL HAYES
MANAGEMENT
CREATIVE ARTIST & STYLE MANAGEMENT

020 7482 1555

www.carolhayesmanagement.co.uk



Christobelle Batchelor

Stylists | Womens | New Talent
Editorial

CAROLHAYES
MANAGEMENT
CREATIVE ARTIST & STYLE MANAGEMENT

020 7482 1555

www.carolhayesmanagement.co.uk



Top by Maria Scrimone
Body Paint made up with by Leticia Doolittle
Wald Eye by Chanson @UK Right
Shoes by DolceGloss
Long Finger Ring by Petra Jewellery
Gold Ring with Blue Gems (left hand) by Mabel Hensel

Photographer: Dana Marie Jones
Stylist: Christobelle Batchelor
Stylist Assistant: Georgia Lintal
MUA: Anusha Bowen Face De Glamour using Kryolan, Makeupguru, Nars & Bobbi Brown
Hair: Lauren Reynolds using Bumble & Bumble
Model: Paula Dulcet @Nars

Christobelle Batchelor
Stylists | Womens | New Talent
Editorial

CAROL HAYES
MANAGEMENT
CREATIVE ARTIST & STYLE MANAGEMENT

020 7482 1555
www.carolhayesmanagement.co.uk



Christobelle Batchelor

Stylists | Womens | New Talent
Editorial

CAROLHAYES
MANAGEMENT
CREATIVE ARTIST & STYLE MANAGEMENT

020 7482 1555

www.carolhayesmanagement.co.uk



Christobelle Batchelor
Stylists | Womens | New Talent
Editorial

CAROLHAYES
MANAGEMENT
CREATIVE ARTIST & STYLE MANAGEMENT

020 7482 1555

www.carolhayesmanagement.co.uk



'THE **P**OWER OF MY **S**ELF
IS MOVING.
MY **H**EART. MY BIRTH.
MY **P**ASSIONS.
MY COMING INTO
EXISTENCE'

– HEART OF LIGHT.
EGYPTIAN BOOK OF THE DEAD

Christobelle Batchelor

Stylists | Womens | New Talent
Editorial

CAROL HAYES
MANAGEMENT
CREATIVE ARTIST & STYLE MANAGEMENT

020 7482 1555

www.carolhayesmanagement.co.uk



Christobelle Batchelor

Stylists | Womens | New Talent
Editorial

CAROLHAYES
MANAGEMENT
CREATIVE ARTIST & STYLE MANAGEMENT

020 7482 1555

www.carolhayesmanagement.co.uk



Christobelle Batchelor

Stylists | Womens | New Talent
Editorial

**CAROLHAYES
MANAGEMENT**
CREATIVE ARTIST & STYLE MANAGEMENT

020 7482 1555

www.carolhayesmanagement.co.uk



Christobelle Batchelor
Stylists | Womens | New Talent
Editorial

CAROL HAYES
MANAGEMENT
CREATIVE ARTIST & STYLE MANAGEMENT

020 7482 1555

www.carolhayesmanagement.co.uk



Christobelle Batchelor
Stylists | Womens | New Talent
Editorial



HIGH TRUSTED FINGERBY COCO DE NIJE

CAROL HAYES
MANAGEMENT
CREATIVE ARTIST & STYLE MANAGEMENT

020 7482 1555

www.carolhayesmanagement.co.uk



Christobelle Batchelor
Stylists | Womens | New Talent
Editorial

CAROLHAYES
MANAGEMENT
CREATIVE ARTIST & STYLE MANAGEMENT

020 7482 1555

www.carolhayesmanagement.co.uk



Christobelle Batchelor
Stylists | Womens | New Talent
Editorial

CAROL HAYES
MANAGEMENT
CREATIVE ARTIST & STYLE MANAGEMENT

020 7482 1555
www.carolhayesmanagement.co.uk



Christobelle Batchelor
Stylists | Womens | New Talent
Editorial

CAROL HAYES
MANAGEMENT
CREATIVE ARTIST & STYLE MANAGEMENT

020 7482 1555

www.carolhayesmanagement.co.uk



Christobelle Batchelor
Stylists | Womens | New Talent
Editorial

CAROLHAYES
MANAGEMENT
CREATIVE ARTIST & STYLE MANAGEMENT

020 7482 1555

www.carolhayesmanagement.co.uk



Christobelle Batchelor
Stylists | Womens | New Talent
Editorial

CAROLHAYES
MANAGEMENT
CREATIVE ARTIST & STYLE MANAGEMENT

020 7482 1555

www.carolhayesmanagement.co.uk

"WE DON'T LOSE FRIENDS..."



"WE JUST REALISE WHO THE REAL ONES ARE"



Christobelle Batchelor
Stylists | Womens | New Talent
Editorial

CAROL HAYES
MANAGEMENT
CREATIVE ARTIST & STYLE MANAGEMENT

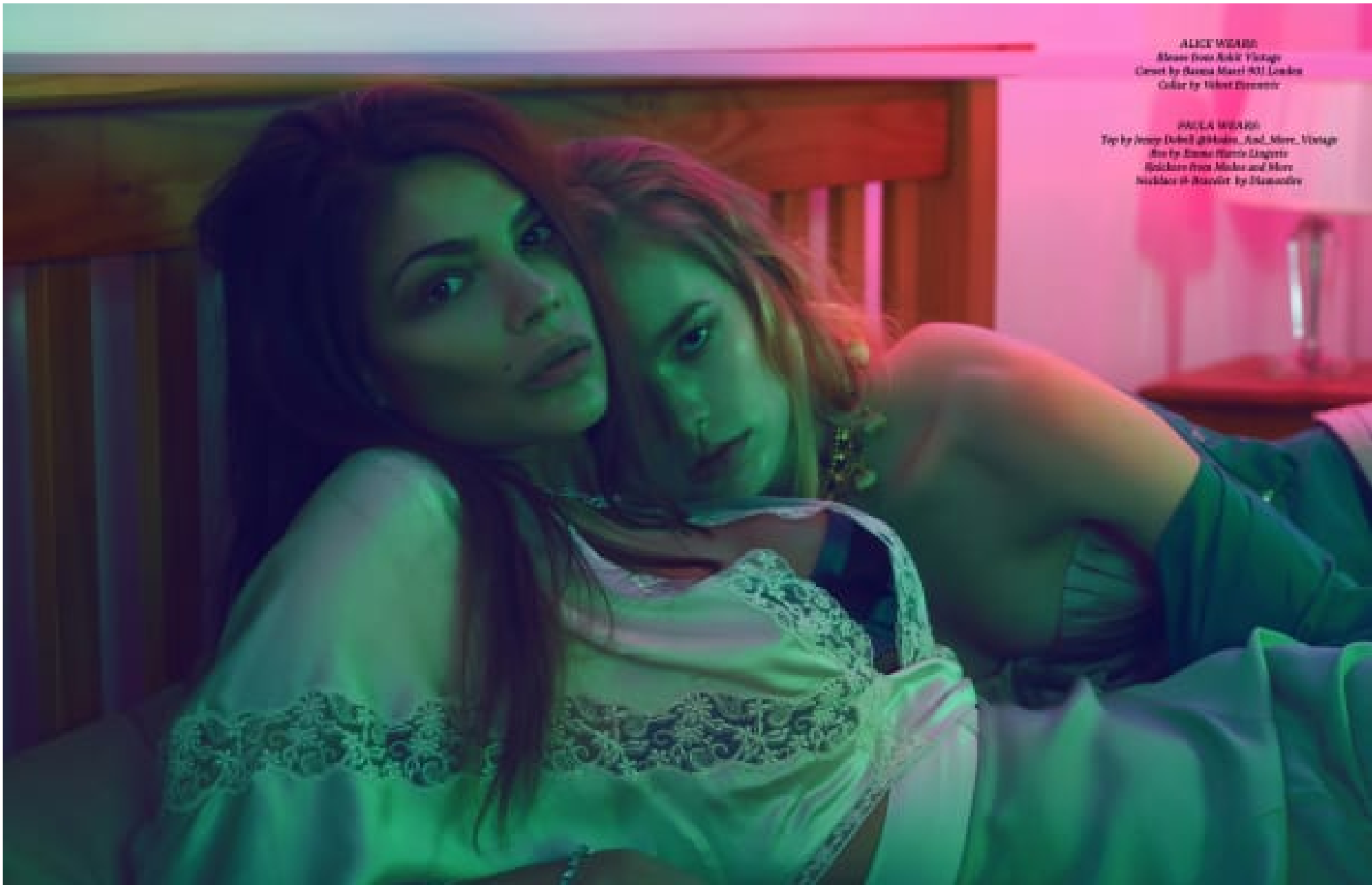
020 7482 1555

www.carolhayesmanagement.co.uk



Christobelle Batchelor
 Stylists | Womens | New Talent
 Editorial





ALICE WEIR
Blouse from Mark Vintage
Casual by Emma Ward 901 London
Collar by Robert D'Armitt

PAULA WEIR
Top by Jenny Doherty 901 London, And More Vintage
Dress by Emma Ward 901 London
Necklace from Minka and More
Necklace in Minka by Minka

Christobelle Batchelor
Stylists | Womens | New Talent
Editorial

CAROL HAYES
MANAGEMENT
CREATIVE ARTIST & STYLE MANAGEMENT

020 7482 1555
www.carolhayesmanagement.co.uk



HAIR WEARS
Blouse from Ralph Vintage
Curtain, Braiders & Hairpins Set by Emma Mason PFI London
Headings by Gipsy 218 Lights
Collar by Victor Bonetto
Gold Floral Hoop Earrings by 2011 Nails

JEWEL WEARS
The by Jenny Dawell @Minko_And_More_Vintage
Pins by Emma Mason Lingerie
Bangles from Minko and More
Necklace by Diamondry
Silver-Plated Hoop Earrings by 2011 Nails

Christobelle Batchelor
Stylists | Womens | New Talent
Editorial

CAROL HAYES
MANAGEMENT
CREATIVE ARTIST & STYLE MANAGEMENT

020 7482 1555
www.carolhayesmanagement.co.uk



Christobelle Batchelor
Stylists | Womens | New Talent
Editorial

CAROL HAYES
MANAGEMENT
CREATIVE ARTIST & STYLE MANAGEMENT

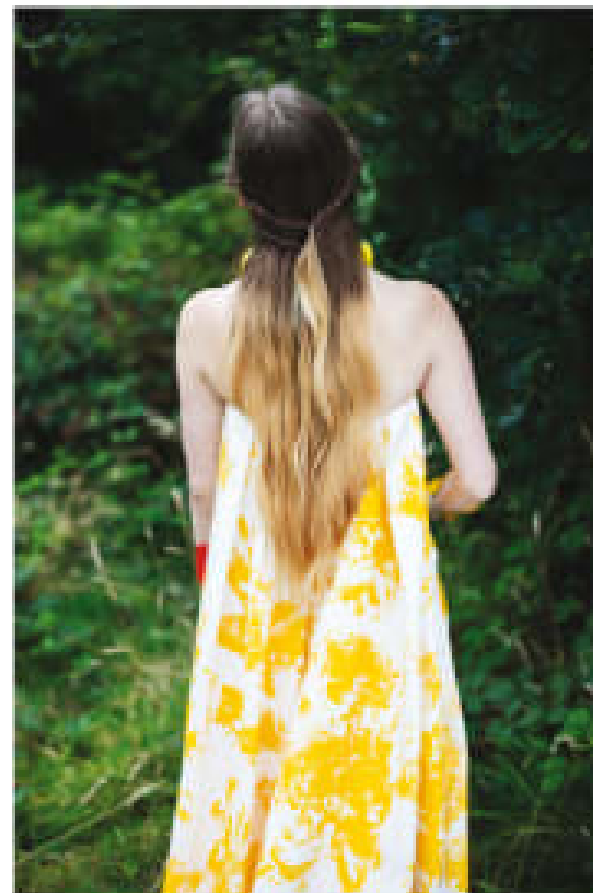
020 7482 1555
www.carolhayesmanagement.co.uk

'ALL THAT FALLS,...



DOUBLE JUMPER BY HEROWANT ARCHIVE
ALLIED BANGLES WITH BY MATTHEW CALVIN
LEVEE EASY BANGLE BY DORIS LIA

... SHALL RISE AGAIN!



DRESS BY GANNON
PRODUCTION & STYLING BY GANNON ALL FROM PEOPLE LONDON

Christobelle Batchelor
Stylists | Womens | New Talent
Editorial

CAROL HAYES
MANAGEMENT
CREATIVE ARTIST & STYLE MANAGEMENT

020 7482 1555
www.carolhayesmanagement.co.uk



TOP & SKIRT BOTH BY RICH
DRESS FROM SHIRAZI BY NISSON FEMDES AND MORE VINOCE
STYL BY TAMARA SHERMAN

Christobelle Batchelor
Stylists | Womens | New Talent
Editorial

CAROL HAYES
MANAGEMENT
CREATIVE ARTIST & STYLE MANAGEMENT

020 7482 1555
www.carolhayesmanagement.co.uk



Christobelle Batchelor
Stylists | Womens | New Talent
Editorial



CAROLHAYES
MANAGEMENT
CREATIVE ARTIST & STYLE MANAGEMENT

020 7482 1555

www.carolhayesmanagement.co.uk



DRESS BY NATALIA KALT LONDON

Christobelle Batchelor

Stylists | Womens | New Talent
Editorial

CAROLHAYES
MANAGEMENT
CREATIVE ARTIST & STYLE MANAGEMENT

020 7482 1555

www.carolhayesmanagement.co.uk



STYLING BY CAROL HAYES
PHOTOGRAPHY BY JAMES WILSON

Christobelle Batchelor
Stylists | Womens | New Talent
Editorial

CAROL HAYES
MANAGEMENT
CREATIVE ARTIST & STYLE MANAGEMENT

020 7482 1555

www.carolhayesmanagement.co.uk

FATED & FABLED



THE ALCHEMY ISSUE

Christobelle Batchelor

Stylists | Womens | New Talent
Editorial

CAROLHAYES
MANAGEMENT
CREATIVE ARTIST & STYLE MANAGEMENT

020 7482 1555

www.carolhayesmanagement.co.uk