

# Christobelle Batchelor

Stylists | Womens | New Talent

Editorial





**Christobelle Batchelor**  
Stylists | Womens | New Talent  
Editorial

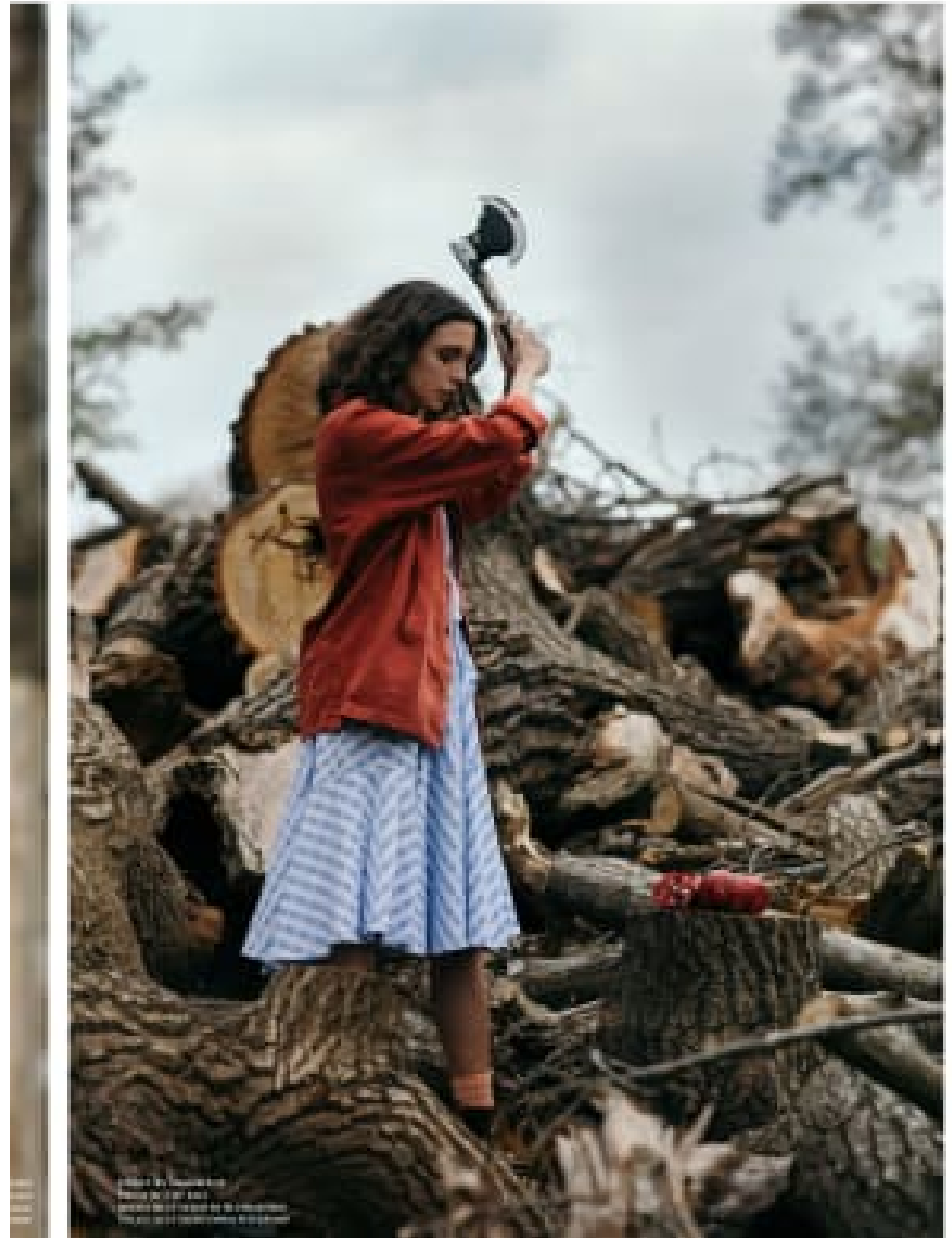
**CAROL HAYES**  
**MANAGEMENT**  
CREATIVE ARTIST & STYLE MANAGEMENT

020 7482 1555

[www.carolhayesmanagement.co.uk](http://www.carolhayesmanagement.co.uk)



**Christobelle Batchelor**  
Stylists | Womens | New Talent  
Editorial



**CAROL HAYES**  
**MANAGEMENT**  
CREATIVE ARTIST & STYLE MANAGEMENT

020 7482 1555

[www.carolhayesmanagement.co.uk](http://www.carolhayesmanagement.co.uk)



**Christobelle Batchelor**  
Stylists | Womens | New Talent  
Editorial



**CAROLHAYES**  
**MANAGEMENT**  
CREATIVE ARTIST & STYLE MANAGEMENT

020 7482 1555

[www.carolhayesmanagement.co.uk](http://www.carolhayesmanagement.co.uk)



**Christobelle Batchelor**  
Stylists | Womens | New Talent  
Editorial



**CAROL HAYES**  
**MANAGEMENT**  
CREATIVE ARTIST & STYLE MANAGEMENT

020 7482 1555

[www.carolhayesmanagement.co.uk](http://www.carolhayesmanagement.co.uk)



**Christobelle Batchelor**  
Stylists | Womens | New Talent  
Editorial





**Christobelle Batchelor**  
Stylists | Womens | New Talent  
Editorial



**CAROL HAYES**  
**MANAGEMENT**  
CREATIVE ARTIST & STYLE MANAGEMENT

020 7482 1555

[www.carolhayesmanagement.co.uk](http://www.carolhayesmanagement.co.uk)



**Christobelle Batchelor**  
Stylists | Womens | New Talent  
Editorial



**CAROL HAYES**  
**MANAGEMENT**  
CREATIVE ARTIST & STYLE MANAGEMENT

020 7482 1555

[www.carolhayesmanagement.co.uk](http://www.carolhayesmanagement.co.uk)





**Christobelle Batchelor**  
Stylists | Womens | New Talent  
Editorial



**CAROLHAYES**  
**MANAGEMENT**  
CREATIVE ARTIST & STYLE MANAGEMENT

020 7482 1555

[www.carolhayesmanagement.co.uk](http://www.carolhayesmanagement.co.uk)



**Christobelle Batchelor**  
Stylists | Womens | New Talent  
Editorial

**CAROL HAYES**  
**MANAGEMENT**  
CREATIVE ARTIST & STYLE MANAGEMENT

020 7482 1555  
[www.carolhayesmanagement.co.uk](http://www.carolhayesmanagement.co.uk)



**Christobelle Batchelor**  
Stylists | Womens | New Talent  
Editorial

**CAROL HAYES**  
**MANAGEMENT**  
CREATIVE ARTIST & STYLE MANAGEMENT

020 7482 1555

[www.carolhayesmanagement.co.uk](http://www.carolhayesmanagement.co.uk)



**Christobelle Batchelor**  
Stylists | Womens | New Talent  
Editorial

**CAROL HAYES**  
**MANAGEMENT**  
CREATIVE ARTIST & STYLE MANAGEMENT

020 7482 1555

[www.carolhayesmanagement.co.uk](http://www.carolhayesmanagement.co.uk)



**Christobelle Batchelor**  
Stylists | Womens | New Talent  
Editorial

**CAROLHAYES**  
**MANAGEMENT**  
CREATIVE ARTIST & STYLE MANAGEMENT

020 7482 1555  
[www.carolhayesmanagement.co.uk](http://www.carolhayesmanagement.co.uk)



**Christobelle Batchelor**  
 Stylists | Womens | New Talent  
 Editorial

**CAROL HAYES**  
**MANAGEMENT**  
 CREATIVE ARTIST & STYLE MANAGEMENT

020 7482 1555  
[www.carolhayesmanagement.co.uk](http://www.carolhayesmanagement.co.uk)



**Christobelle Batchelor**

Stylists | Womens | New Talent  
Editorial

**CAROLHAYES**  
**MANAGEMENT**  
CREATIVE ARTIST & STYLE MANAGEMENT

020 7482 1555

[www.carolhayesmanagement.co.uk](http://www.carolhayesmanagement.co.uk)



© 2015 Carol Hayes Management  
All rights reserved  
www.carolhayesmanagement.co.uk

'WE NEVER KNOW THE WORTH OF WATER

TILL THE WELL IS DRY'

—THOMAS FULLER

**Christobelle Batchelor**  
Stylists | Womens | New Talent  
Editorial

**CAROL HAYES**  
**MANAGEMENT**  
CREATIVE ARTIST & STYLE MANAGEMENT

020 7482 1555  
[www.carolhayesmanagement.co.uk](http://www.carolhayesmanagement.co.uk)





**Christobelle Batchelor**  
Stylists | Womens | New Talent  
Editorial



**CAROL HAYES**  
**MANAGEMENT**  
CREATIVE ARTIST & STYLE MANAGEMENT

020 7482 1555

[www.carolhayesmanagement.co.uk](http://www.carolhayesmanagement.co.uk)



**Christobelle Batchelor**  
Stylists | Womens | New Talent  
Editorial

**CAROLHAYES**  
**MANAGEMENT**  
CREATIVE ARTIST & STYLE MANAGEMENT

020 7482 1555

[www.carolhayesmanagement.co.uk](http://www.carolhayesmanagement.co.uk)



**Christobelle Batchelor**  
Stylists | Womens | New Talent  
Editorial

**CAROL HAYES**  
**MANAGEMENT**  
CREATIVE ARTIST & STYLE MANAGEMENT

020 7482 1555  
[www.carolhayesmanagement.co.uk](http://www.carolhayesmanagement.co.uk)



**Christobelle Batchelor**  
Stylists | Womens | New Talent  
Editorial

**CAROLHAYES**  
**MANAGEMENT**  
CREATIVE ARTIST & STYLE MANAGEMENT

020 7482 1555

[www.carolhayesmanagement.co.uk](http://www.carolhayesmanagement.co.uk)



**Christobelle Batchelor**  
Stylists | Womens | New Talent  
Editorial

**CAROL HAYES**  
**MANAGEMENT**  
CREATIVE ARTIST & STYLE MANAGEMENT

020 7482 1555  
[www.carolhayesmanagement.co.uk](http://www.carolhayesmanagement.co.uk)



**Christobelle Batchelor**  
Stylists | Womens | New Talent  
Editorial

**CAROL HAYES**  
**MANAGEMENT**  
CREATIVE ARTIST & STYLE MANAGEMENT

020 7482 1555

[www.carolhayesmanagement.co.uk](http://www.carolhayesmanagement.co.uk)



**Christobelle Batchelor**  
Stylists | Womens | New Talent  
Editorial

**CAROL HAYES**  
**MANAGEMENT**  
CREATIVE ARTIST & STYLE MANAGEMENT

020 7482 1555

[www.carolhayesmanagement.co.uk](http://www.carolhayesmanagement.co.uk)



**Christobelle Batchelor**

Stylists | Womens | New Talent  
Editorial

**CAROLHAYES**  
**MANAGEMENT**  
CREATIVE ARTIST & STYLE MANAGEMENT

020 7482 1555

[www.carolhayesmanagement.co.uk](http://www.carolhayesmanagement.co.uk)





Top by Maria Scrimone  
Body Paint made up with by Leticia Doolittle  
Wald Jew by Charissa @UK Right  
Shoes by DolceGloss  
Long Finger Ring by Petra Jewellery  
Gold Ring with Blue Gems (left hand) by Mabel Hensel

Photographer: Dana Marie Jones  
Stylist: Christobelle Batchelor  
Stylist Assistant: Giorgio Lintini  
MUA: Anusha Bowen Face De Glamour using Kryolan, Makeupgizmo, Nars & Bobbi Brown  
Hair: Lauren Reynolds using Bumble & Bumble  
Model: Paula Dulcet @Nars

**Christobelle Batchelor**  
Stylists | Womens | New Talent  
Editorial

**CAROL HAYES**  
**MANAGEMENT**  
CREATIVE ARTIST & STYLE MANAGEMENT

020 7482 1555  
[www.carolhayesmanagement.co.uk](http://www.carolhayesmanagement.co.uk)



**Christobelle Batchelor**

Stylists | Womens | New Talent  
Editorial

**CAROLHAYES**  
**MANAGEMENT**  
CREATIVE ARTIST & STYLE MANAGEMENT

020 7482 1555

[www.carolhayesmanagement.co.uk](http://www.carolhayesmanagement.co.uk)



**Christobelle Batchelor**  
Stylists | Womens | New Talent  
Editorial

**CAROLHAYES**  
**MANAGEMENT**  
CREATIVE ARTIST & STYLE MANAGEMENT

020 7482 1555

[www.carolhayesmanagement.co.uk](http://www.carolhayesmanagement.co.uk)



'THE **P**OWER OF MY **S**ELF  
IS MOVING.  
MY **H**EART. MY BIRTH.  
MY **P**ASSIONS.  
MY COMING INTO  
**E**XISTENCE'

– HEART OF LIGHT.  
EGYPTIAN BOOK OF THE DEAD

**Christobelle Batchelor**

Stylists | Womens | New Talent  
Editorial

**CAROL HAYES**  
**MANAGEMENT**  
CREATIVE ARTIST & STYLE MANAGEMENT

020 7482 1555

[www.carolhayesmanagement.co.uk](http://www.carolhayesmanagement.co.uk)



**Christobelle Batchelor**

Stylists | Womens | New Talent  
Editorial

**CAROLHAYES**  
**MANAGEMENT**  
CREATIVE ARTIST & STYLE MANAGEMENT

020 7482 1555

[www.carolhayesmanagement.co.uk](http://www.carolhayesmanagement.co.uk)



**Christobelle Batchelor**

Stylists | Womens | New Talent  
Editorial

**CAROLHAYES  
MANAGEMENT**  
CREATIVE ARTIST & STYLE MANAGEMENT

020 7482 1555

[www.carolhayesmanagement.co.uk](http://www.carolhayesmanagement.co.uk)



**Christobelle Batchelor**  
Stylists | Womens | New Talent  
Editorial

**CAROL HAYES**  
**MANAGEMENT**  
CREATIVE ARTIST & STYLE MANAGEMENT

020 7482 1555

[www.carolhayesmanagement.co.uk](http://www.carolhayesmanagement.co.uk)



**Christobelle Batchelor**  
Stylists | Womens | New Talent  
Editorial



**CAROL HAYES**  
**MANAGEMENT**  
CREATIVE ARTIST & STYLE MANAGEMENT

020 7482 1555

[www.carolhayesmanagement.co.uk](http://www.carolhayesmanagement.co.uk)





**Christobelle Batchelor**  
Stylists | Womens | New Talent  
Editorial

**CAROLHAYES**  
**MANAGEMENT**  
CREATIVE ARTIST & STYLE MANAGEMENT

020 7482 1555

[www.carolhayesmanagement.co.uk](http://www.carolhayesmanagement.co.uk)



**Christobelle Batchelor**  
Stylists | Womens | New Talent  
Editorial

**CAROL HAYES**  
**MANAGEMENT**  
CREATIVE ARTIST & STYLE MANAGEMENT

020 7482 1555  
[www.carolhayesmanagement.co.uk](http://www.carolhayesmanagement.co.uk)



**Christobelle Batchelor**  
Stylists | Womens | New Talent  
Editorial

**CAROL HAYES**  
**MANAGEMENT**  
CREATIVE ARTIST & STYLE MANAGEMENT

020 7482 1555

[www.carolhayesmanagement.co.uk](http://www.carolhayesmanagement.co.uk)



**Christobelle Batchelor**  
Stylists | Womens | New Talent  
Editorial

**CAROL HAYES**  
**MANAGEMENT**  
CREATIVE ARTIST & STYLE MANAGEMENT

020 7482 1555

[www.carolhayesmanagement.co.uk](http://www.carolhayesmanagement.co.uk)



**Christobelle Batchelor**

Stylists | Womens | New Talent  
Editorial

**CAROLHAYES  
MANAGEMENT**  
CREATIVE ARTIST & STYLE MANAGEMENT

020 7482 1555

[www.carolhayesmanagement.co.uk](http://www.carolhayesmanagement.co.uk)

"WE DON'T LOSE FRIENDS..."



"WE JUST REALISE WHO THE REAL ONES ARE"



**Christobelle Batchelor**  
Stylists | Womens | New Talent  
Editorial

**CAROL HAYES**  
**MANAGEMENT**  
CREATIVE ARTIST & STYLE MANAGEMENT

020 7482 1555

[www.carolhayesmanagement.co.uk](http://www.carolhayesmanagement.co.uk)



**Christobelle Batchelor**  
 Stylists | Womens | New Talent  
 Editorial

**CAROL HAYES**  
**MANAGEMENT**  
 CREATIVE ARTIST & STYLE MANAGEMENT



020 7482 1555

[www.carolhayesmanagement.co.uk](http://www.carolhayesmanagement.co.uk)



**ALICE WEIR**  
Blouse from Mark Vintage  
Casual by Emma Ward 901 London  
Collar by Robert D'Amico

**PAULA WEIR**  
Top by Jenny Doherty 901 London  
Dress by Emma Ward 901 London  
Necklace from Misha and More  
Necklace by Misha and More

**Christobelle Batchelor**  
Stylists | Womens | New Talent  
Editorial

**CAROL HAYES**  
**MANAGEMENT**  
CREATIVE ARTIST & STYLE MANAGEMENT

020 7482 1555  
[www.carolhayesmanagement.co.uk](http://www.carolhayesmanagement.co.uk)





**HAIR WEARS**  
Blowies from Ruffi Vintage  
Crown, Braiders & Vandyke Hair by Emma Mason PFI London  
Styling by Claire Gill Light  
Color by Yvonne Escobedo  
Gold Thread Jewelry Ring by JJJWT Made

**JEWEL WEARS**  
The by Jovon Duffell @Minko\_Aud\_More\_Vintage  
Pins by Emma Harris Lighter  
Earrings from Modis and More  
Necklace by Diamondry  
Silver-Plated Bracelet Made by JJJWT Made

**Christobelle Batchelor**  
Stylists | Womens | New Talent  
Editorial

**CAROL HAYES**  
**MANAGEMENT**  
CREATIVE ARTIST & STYLE MANAGEMENT

020 7482 1555  
[www.carolhayesmanagement.co.uk](http://www.carolhayesmanagement.co.uk)

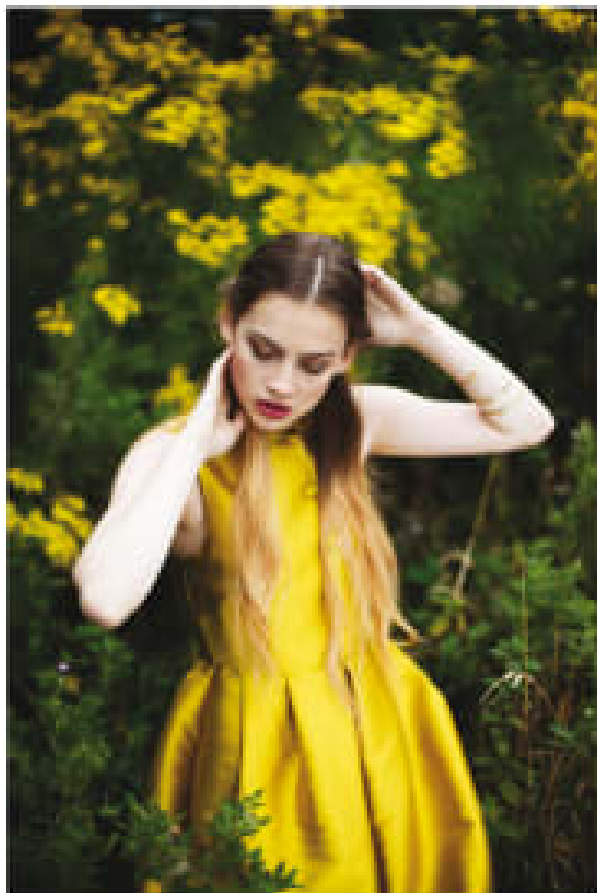


**Christobelle Batchelor**  
Stylists | Womens | New Talent  
Editorial

**CAROL HAYES**  
**MANAGEMENT**  
CREATIVE ARTIST & STYLE MANAGEMENT

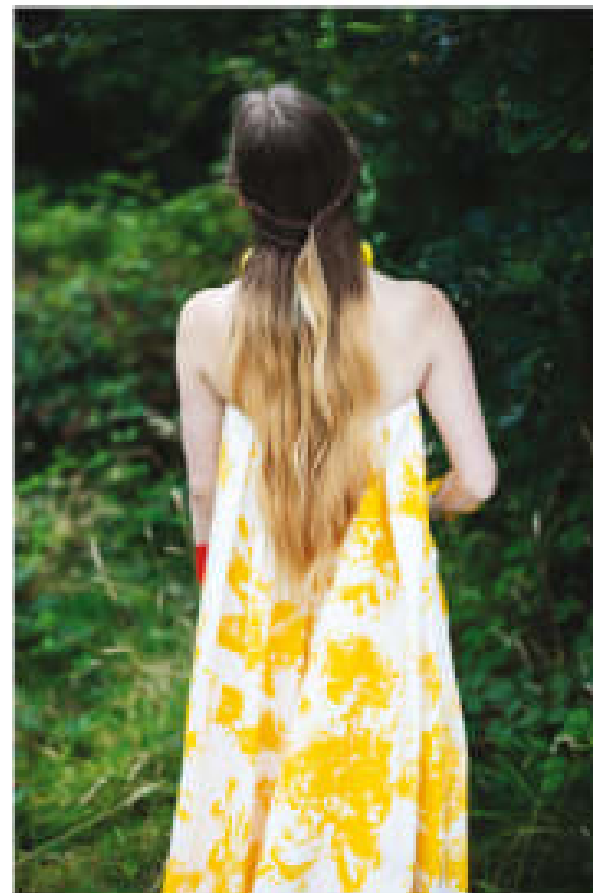
020 7482 1555  
[www.carolhayesmanagement.co.uk](http://www.carolhayesmanagement.co.uk)

'ALL THAT FALLS,...



DOUBLE JUMPER BY HEROWANT ARCHIVE  
ALLIED BANGLES WITH BY MATTHEW CALVIN  
LEVEE EASY BANGLE BY DRELLA

... SHALL RISE AGAIN!



DRESS BY GANNON  
PROSLACE & CUFFY SHIRT BENT-ALL FROM PEOPLE LONDON



TOP & SKIRT BOTH BY RICH  
DRESS FROM SHIRAZI BY NISSON FEMDES AND MORE VINOCE  
STYL BY TAMARA BISHOP

**Christobelle Batchelor**  
Stylists | Womens | New Talent  
Editorial

**CAROL HAYES**  
**MANAGEMENT**  
CREATIVE ARTIST & STYLE MANAGEMENT

020 7482 1555  
[www.carolhayesmanagement.co.uk](http://www.carolhayesmanagement.co.uk)



**Christobelle Batchelor**  
Stylists | Womens | New Talent  
Editorial



**CAROLHAYES**  
**MANAGEMENT**  
CREATIVE ARTIST & STYLE MANAGEMENT

020 7482 1555

[www.carolhayesmanagement.co.uk](http://www.carolhayesmanagement.co.uk)



DRESS BY NATALIA KALT LONDON

## Christobelle Batchelor

Stylists | Womens | New Talent  
Editorial

**CAROLHAYES**  
**MANAGEMENT**  
CREATIVE ARTIST & STYLE MANAGEMENT

020 7482 1555

[www.carolhayesmanagement.co.uk](http://www.carolhayesmanagement.co.uk)



STYLING BY CAROL HAYES  
PHOTOGRAPHY BY JAMES WILSON

**Christobelle Batchelor**  
Stylists | Womens | New Talent  
Editorial

**CAROL HAYES**  
**MANAGEMENT**  
CREATIVE ARTIST & STYLE MANAGEMENT

020 7482 1555

[www.carolhayesmanagement.co.uk](http://www.carolhayesmanagement.co.uk)

# FATED & FABLED



## THE ALCHEMY ISSUE

**Christobelle Batchelor**

Stylists | Womens | New Talent  
Editorial

**CAROLHAYES**  
**MANAGEMENT**  
CREATIVE ARTIST & STYLE MANAGEMENT

020 7482 1555

[www.carolhayesmanagement.co.uk](http://www.carolhayesmanagement.co.uk)